

# Anti-TP53INP1 Recombinant Rabbit Monoclonal Antibody



**Catalog #: 2816**

## Aliases

TP53INP1; Tumor Protein P53 Inducible Nuclear Protein 1; P53DINP1; SIP; TP53INP1A; TP53INP1B; Teap; P53-Dependent Damage-Inducible Nuclear Protein 1; Tumor Protein P53-Inducible Nuclear Protein 1; Stress-Induced Protein; DKFZp434M1317; FLJ22139; P53-Inducible P53DINP1; TP53DINP1

## Background

Gene Name: TP53INP1

NCBI Gene Entry: [94241](#)

UniProt Entry: [Q96A56](#)

## Application Information

Molecular Weight: Predicted, 27 kDa; observed, 32 kDa

Clonality: Rabbit monoclonal antibody

Clone ID: 24GB2470

Species Reactivity: Mouse, rat

Applications Tested: Western blotting (WB), flow cytometry (FCM), immunocytochemistry (IC)

## Immunogen

A synthesized peptide derived from human p53 DINP1

## Isotype

Rabbit IgG

## Storage Buffer

Supplied in PBS (pH 7.4) containing 50% glycerol, and 0.02% sodium azide.

## Storage

Store at -20 °C for one year.

## Recommended Dilutions

Western Blotting (WB): 1:1,000-1:5,000

Flow Cytometry (FCM): 1:2,000

Immunocytochemistry (IC): 1:100-1:1,000

---

### SUPPORT

SUPPORT@GENUINBIOTECH.COM  
TEL: +1-540-855-7041

### ORDERS

SALES@GENUINBIOTECH.COM  
FAX: +1-540-855-7041

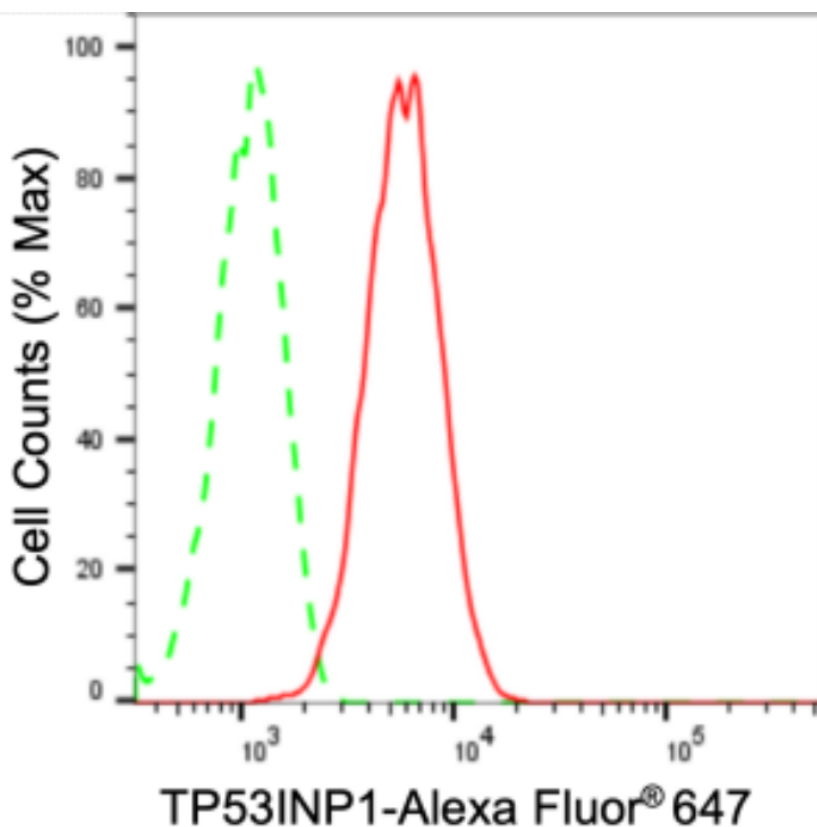
[WWW.GENUINBIOTECH.COM](http://WWW.GENUINBIOTECH.COM)

# Anti-TP53INP1 Recombinant Rabbit Monoclonal Antibody

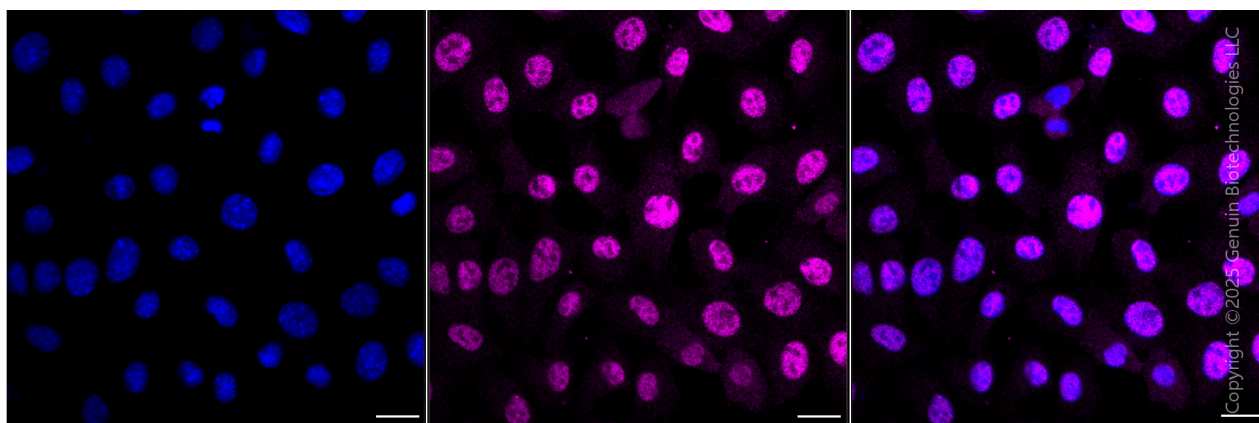
PAGE 2

**Note:** This product is for research use only.

## Validation Data



Flow cytometric analysis of TP53INP1 expression in C2C12 cells using anti-TP53INP1 antibody (Cat#2816, 1:2,000). Green, isotype control; red, TP53INP1.



Immunocytochemical staining of C2C12 cells with anti-TP53INP1 antibody (Cat#2816, 1:1,000) . Nuclei were stained blue with DAPI; TP53INP1 was stained magenta with Alexa Fluor® 647. Images were taken using Leica stellaris 5. Protein abundance based on laser Intensity and smart gain: Medium. Scale bar, 20 µm.

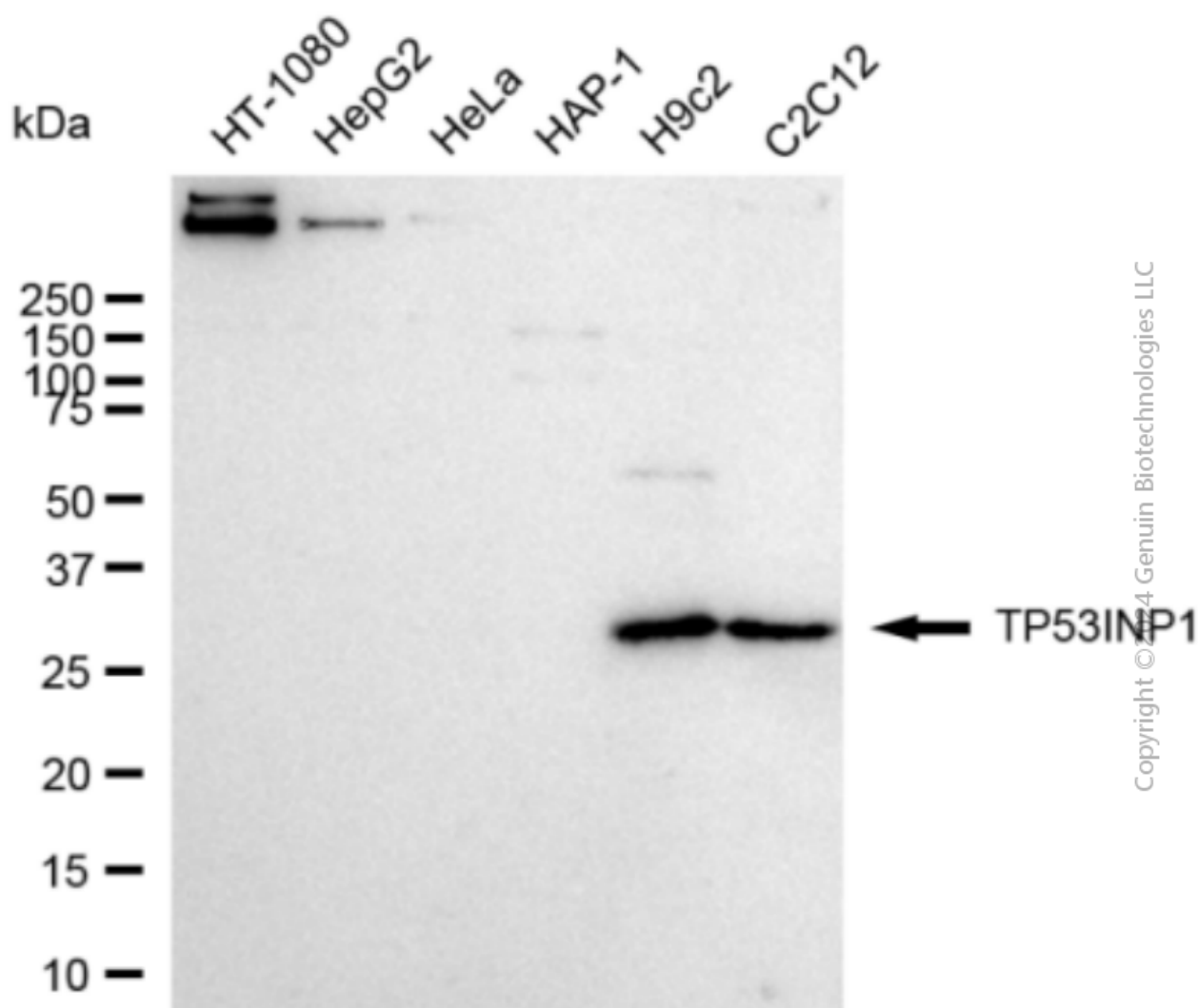
### SUPPORT

SUPPORT@GENUINBIOTECH.COM  
TEL: +1-540-855-7041

### ORDERS

SALES@GENUINBIOTECH.COM  
FAX: +1-540-855-7041

[WWW.GENUINBIOTECH.COM](http://WWW.GENUINBIOTECH.COM)



Western blotting analysis using anti-TP53INP1 antibody (Cat#2816). Total cell lysates (30  $\mu$ g) from various cell lines were loaded and separated by SDS-PAGE. The blot was incubated with anti-TP53INP1 antibody (Cat#2816, 1:5,000) and HRP-conjugated goat anti-rabbit secondary antibody (Cat#201, 1:20,000) respectively. Image was developed using FeQ™ ECL Substrate Kit (Cat#226).