

## Catalog #: 2839

## Aliases

VIM; Vimentin; Epididymis Secretory Sperm Binding Protein

## Background

Gene Name: VIM

NCBI Gene Entry: [7431](#)

UniProt Entry: [P08670](#)

## Application Information

Molecular Weight: Predicted, 54 kDa; observed, 56 kDa

Clonality: Mouse monoclonal antibody

Clone ID: 24GB2785

Species Reactivity: Human, mouse, rat

Applications Tested: Western blotting (WB), flow cytometry (FCM), immunocytochemistry (IC), immunohistochemistry (IHC)

## Immunogen

Recombinant protein of human Vimentin

## Isotype

Mouse IgM kappa

## Storage Buffer

Supplied in PBS (pH 7.4) containing 50% glycerol, and 0.02% sodium azide.

## Storage

Store at -20 °C for one year.

## Recommended Dilutions

Western Blotting (WB): 1:2,500-1:5,000

Immunocytochemistry (IC): 1:100-1:1,000

Flow Cytometry (FCM) : 1:2,000

Immunohistochemistry (IHC): 1:50-1:100

**Note:** This product is for research use only.

---

### SUPPORT

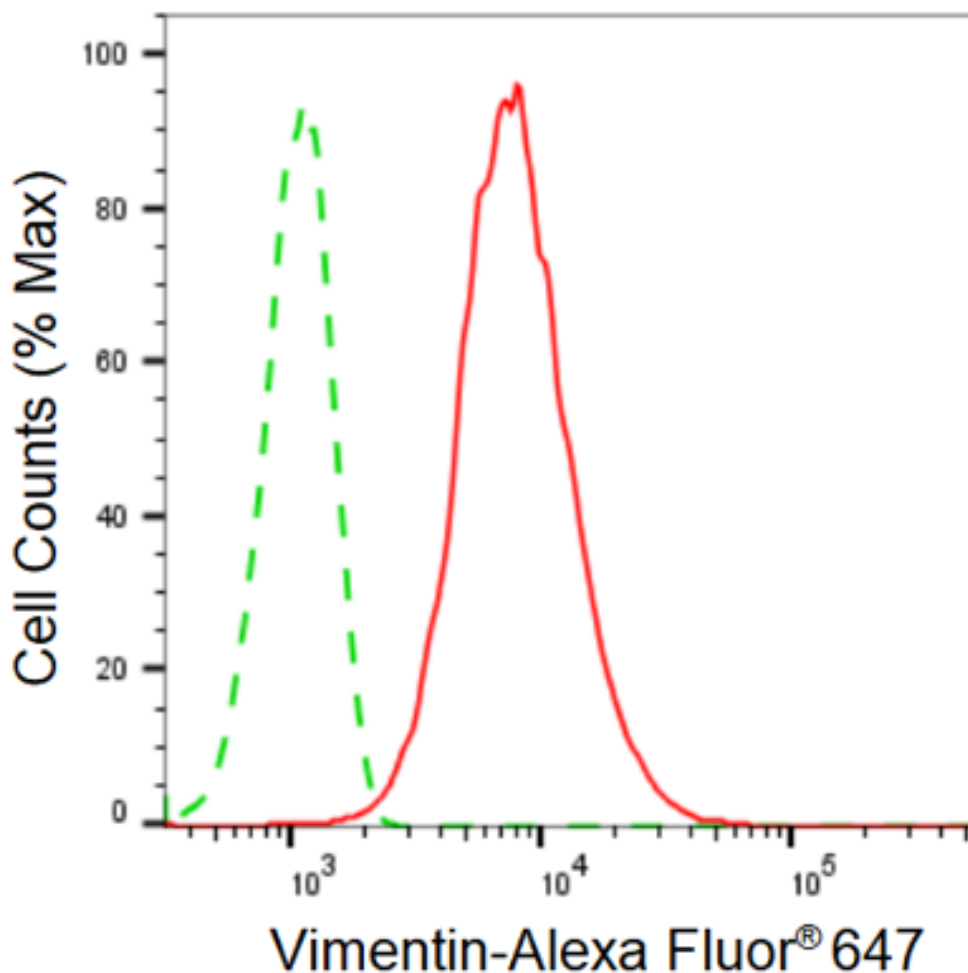
SUPPORT@GENUINBIOTECH.COM  
TEL: +1-540-855-7041

### ORDERS

SALES@GENUINBIOTECH.COM  
FAX: +1-540-855-7041

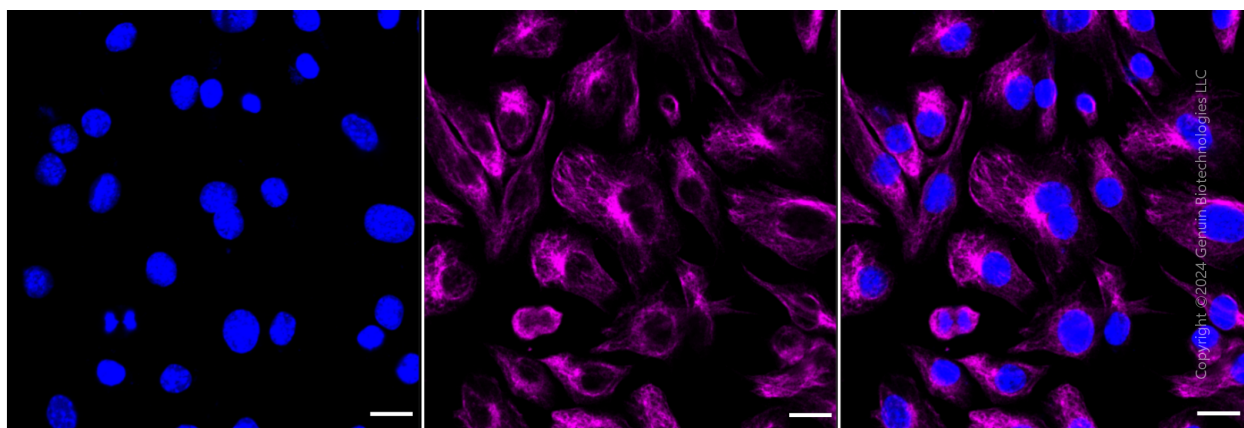
[WWW.GENUINBIOTECH.COM](http://WWW.GENUINBIOTECH.COM)

## Validation Data



Copyright ©2025 Genuin Biotechnologies LLC

Flow cytometric analysis of vimentin expression in C2C12 cells using anti-vimentin antibody (Cat#2839, 1:2,000). Green, isotype control; red, vimentin.



Copyright ©2024 Genuin Biotechnologies LLC

## SUPPORT

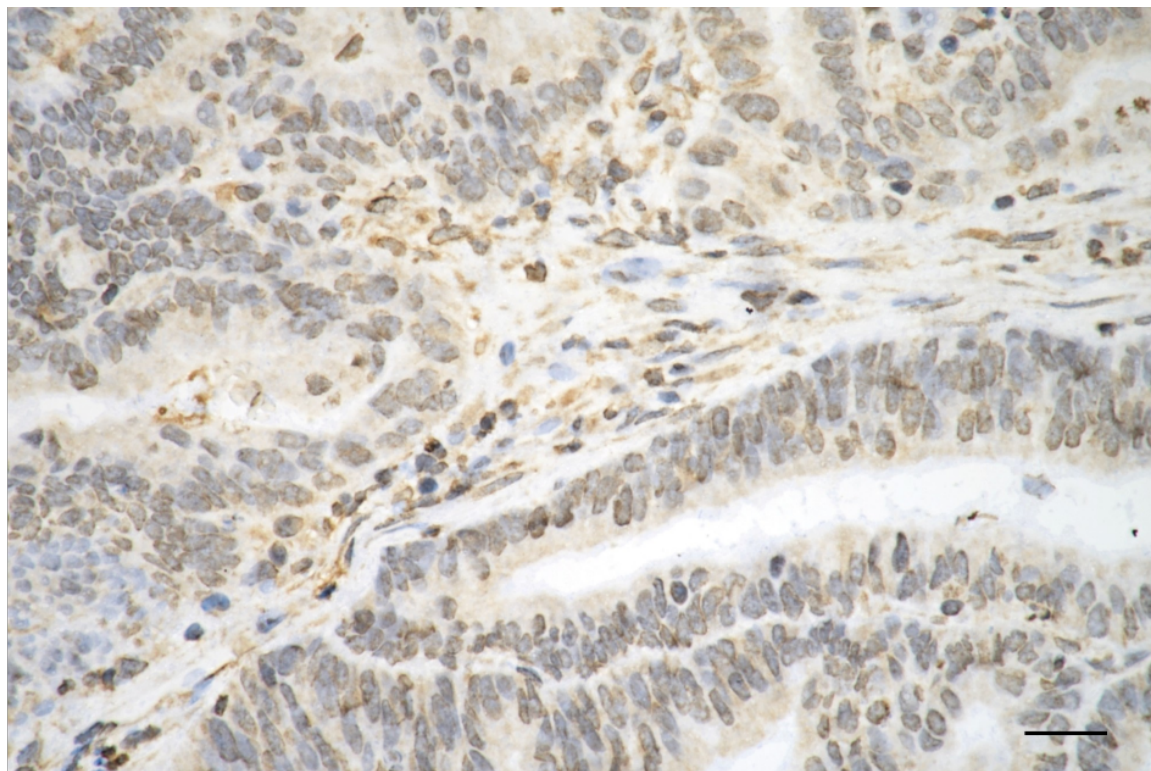
SUPPORT@GENUINBIOTECH.COM  
TEL: +1-540-855-7041

## ORDERS

SALES@GENUINBIOTECH.COM  
FAX: +1-540-855-7041

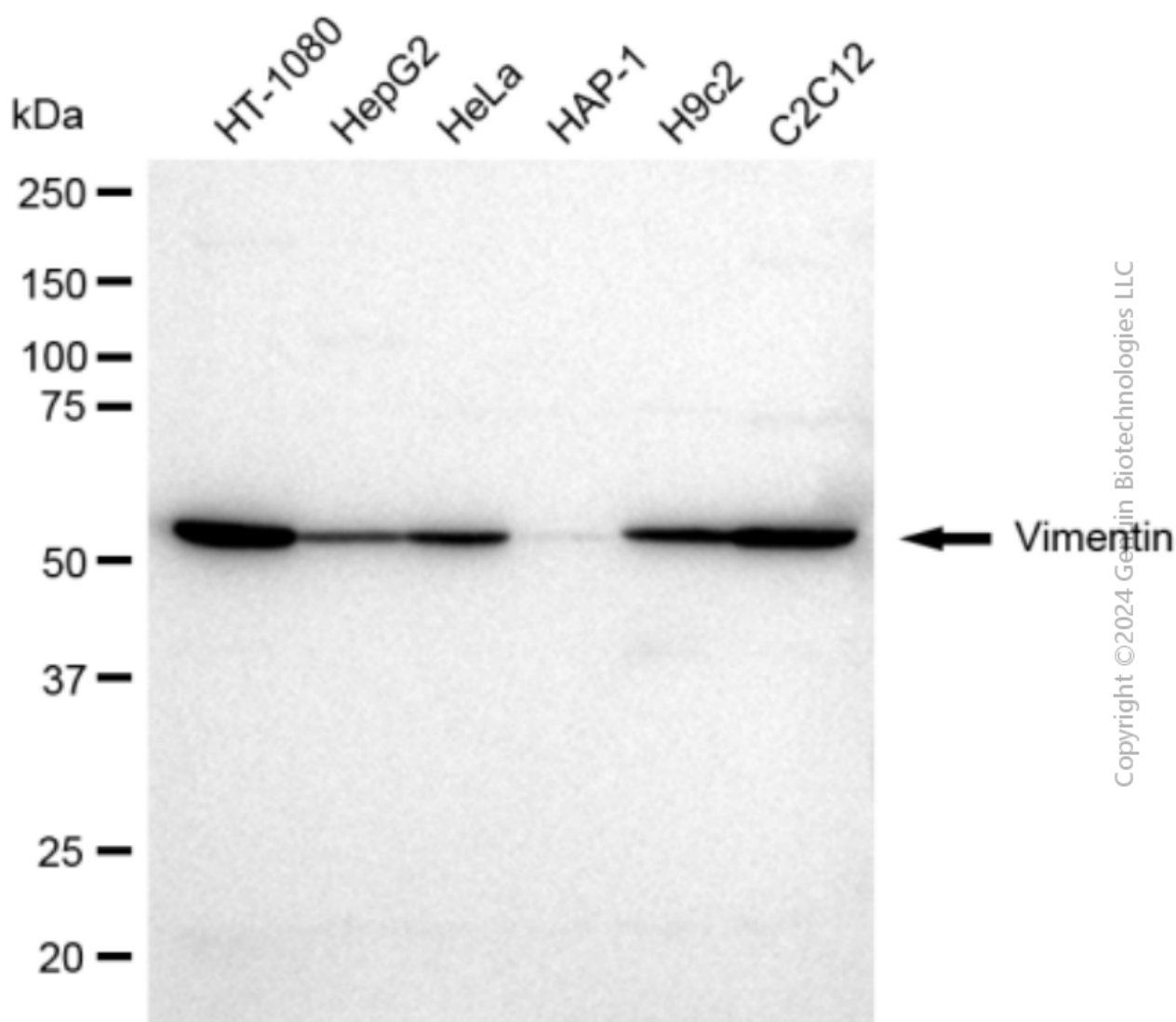
[WWW.GENUINBIOTECH.COM](http://WWW.GENUINBIOTECH.COM)

Immunocytochemical staining of Hela cells with vimentin antibody (Cat#2839, 1:1,000). Nuclei were stained blue with DAPI; Vimentin was stained magenta with Alexa Fluor® 647. Images were taken using Leica stellaris 5. Protein abundance based on laser Intensity and smart gain: High. Scale bar: 20  $\mu$ m.



Copyright ©2025 Genuin Biotechnologies LLC

Immunohistochemistry was performed on paraffin-embedded human endometrial carcinoma using anti-vimentin antibody (Cat#2839, 1:100). Antigen retrieval was done in sodium citrate buffer (pH 6.0). DAB was used for detection, with hematoxylin counterstaining. Images were acquired using a Nikon Ci-L Plus microscope (40 $\times$  objective). Scale bar: 25  $\mu$ m.



Western blotting analysis using anti-Vimentin antibody (Cat#2839). Total cell lysates (30  $\mu$ g) from various cell lines were loaded and separated by SDS-PAGE. The blot was incubated with anti-Vimentin antibody (Cat#2839, 1:5,000) and HRP-conjugated goat anti-mouse secondary antibody (Cat#101, 1:20,000) respectively. Image was developed using FeQ™ ECL Substrate Kit (Cat#226).