

Catalog #: 2840

Aliases

HSPA5; Heat Shock Protein Family A (Hsp70) Member 5; BiP; GRP78; Heat Shock 70kDa Protein 5 (Glucose-Regulated Protein, 78kDa); Immunoglobulin Heavy Chain-Binding Protein; Heat Shock Protein 70 Family Protein 5; Heat Shock Protein Family A Member 5; Endoplasmic Reticulum Chaperone BiP; Glucose-Regulated Protein, 78kDa; 78 KDa Glucose-Regulated Protein; Binding-Immunoglobulin Protein; HSP70 Family Protein 5; Heat Shock 70kD Protein 5 (Glucose-Regulated Protein, 78kD); Endoplasmic Reticulum Luminal Ca(2+)-Binding Protein Grp78; Epididymis Secretory Sperm Binding Protein Li 89n; EC 3.6.4.10; HEL-S-89n; GRP-78

Background

Gene Name: HSPA5

NCBI Gene Entry: [3309](#)

UniProt Entry: [P11021](#)

Application Information

Molecular Weight: Predicted, 72 kDa; observed, 72 kDa

Clonality: Mouse monoclonal antibody

Clone ID: 24GB2790

Species Reactivity: Human

Applications Tested: Western blotting (WB), immunocytochemistry (IC)

Immunogen

Recombinant protein of human GRP78

Isotype

Mouse IgG1 kappa

Storage Buffer

Supplied in PBS (pH 7.4) containing 50% glycerol, and 0.02% sodium azide.

Storage

Store at -20 °C for one year.

Recommended Dilutions

Western Blotting (WB): 1:2,500-1:5,000

Immunocytochemistry (IC): 1:100-1:1,000

SUPPORT

SUPPORT@GENUINBIOTECH.COM
TEL: +1-540-855-7041

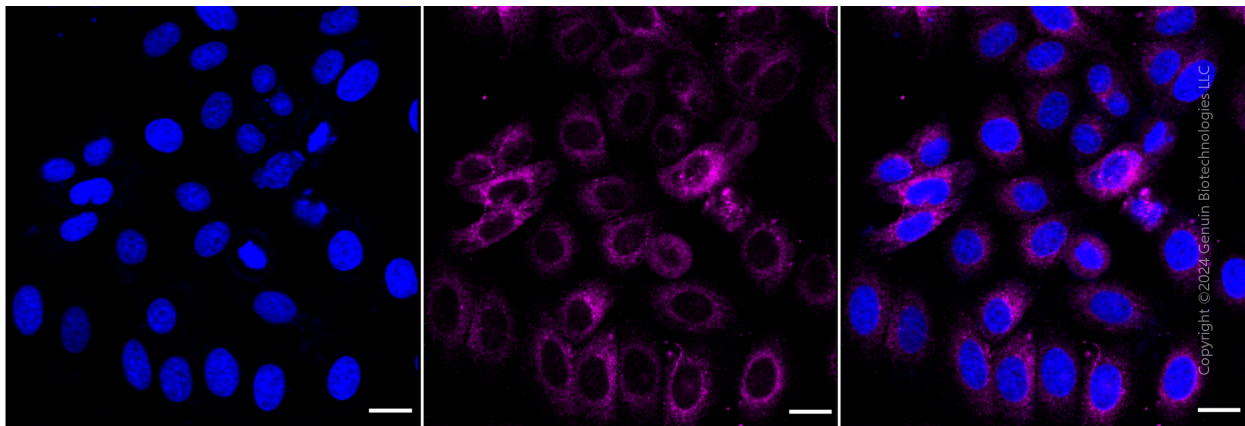
ORDERS

SALES@GENUINBIOTECH.COM
FAX: +1-540-855-7041

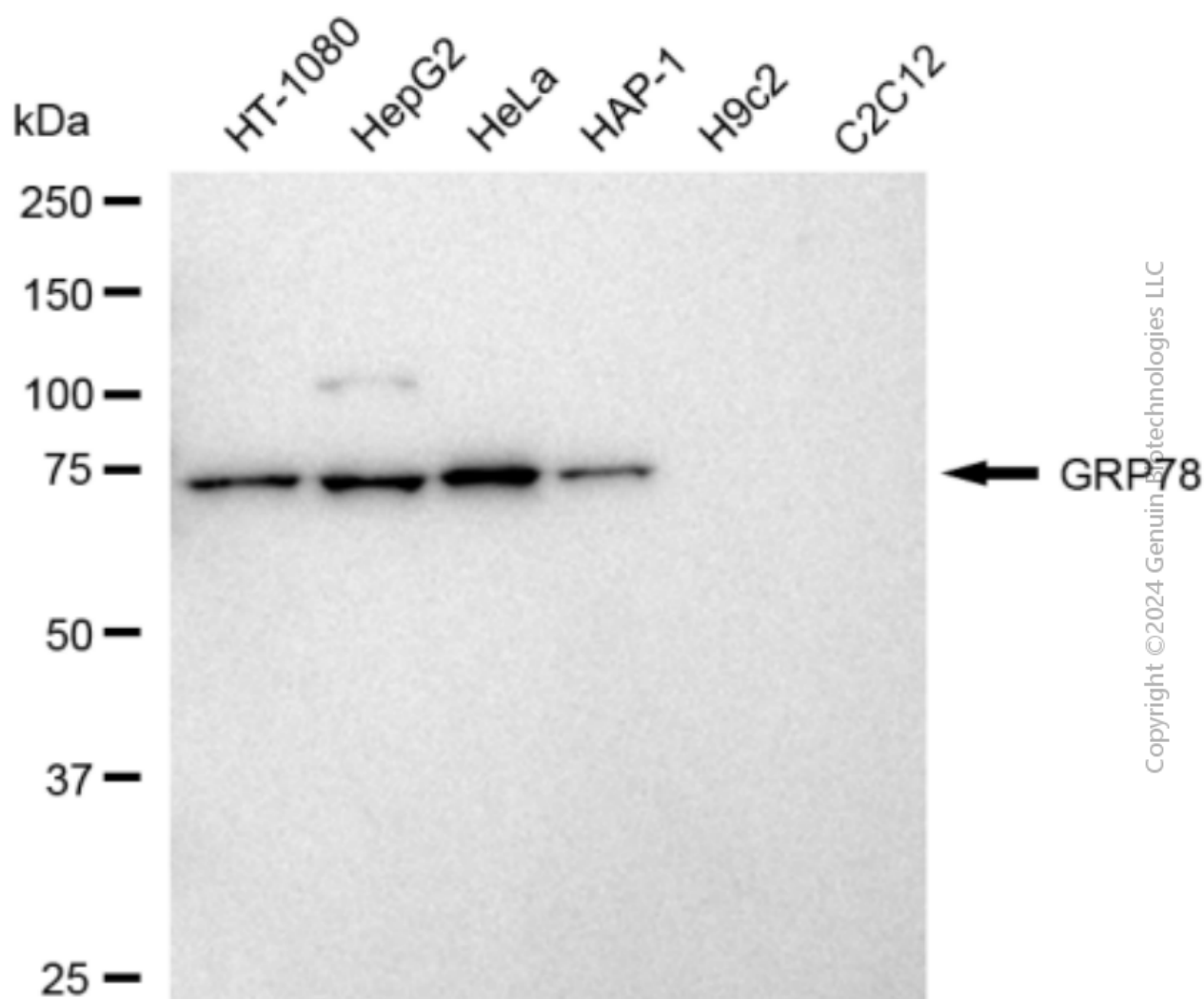
WWW.GENUINBIOTECH.COM

Note: This product is for research use only.

Validation Data



Immunocytochemical staining of HepG2 cells with anti-GRP78 antibody (Cat#2840, 1:1,000). Nuclei were stained blue with DAPI; GRP78 was stained magenta with Alexa Fluor® 647. Images were taken using Leica stellaris 5. Protein abundance based on laser Intensity and smart gain: Low. Scale bar: 20 μ m.



Western blotting analysis using anti-GRP78 antibody (Cat#2840). Total cell lysates (30 µg) from various cell lines were loaded and separated by SDS-PAGE. The blot was incubated with anti-GRP78 antibody (Cat#2840, 1:5,000) and HRP-conjugated goat anti-mouse secondary antibody (Cat#101, 1:20,000) respectively. Image was developed using FeQ™ ECL Substrate Kit (Cat#226).