

Catalog #: 2848

Aliases

KRT5; Keratin 5; CK-5; KRT5A; Keratin 5 (Epidermolysis Bullosa Simplex, Dowling-Meara/Kobner/Weber-Cockayne Types); Epidermolysis Bullosa Simplex 2 Dowling-Meara/Kobner/Weber-Cockayne Types; Keratin, Type II Cytoskeletal 5; Type-II Keratin Kb5; Keratin 5, Type II; Cytokeratin-5; EBS2; K5; 58 Kda Cytokeratin; 58 KDa Cytokeratin; Keratin-5; EBS2A; EBS2B; EBS2C; EBS2D; EBS2E; EBS2F; DDD1; EBS1; CK5; DDD

Background

Gene Name: KRT5

NCBI Gene Entry: [3852](#)

UniProt Entry: [P13647](#)

Application Information

Molecular Weight: Predicted, 62 kDa; observed, 62 kDa

Clonality: Rabbit monoclonal antibody

Clone ID: 24GB2825

Species Reactivity: Human, mouse, rat

Applications Tested: Western blotting (WB)

Immunogen

Recombinant protein of human Cytokeratin 5

Isotype

Rabbit IgG

Storage Buffer

Supplied in PBS (pH 7.4) containing 50% glycerol, and 0.02% sodium azide.

Storage

Store at -20 °C for one year.

Recommended Dilutions

Western Blotting (WB): 1:1,000-1:5,000

Note: This product is for research use only.

SUPPORT

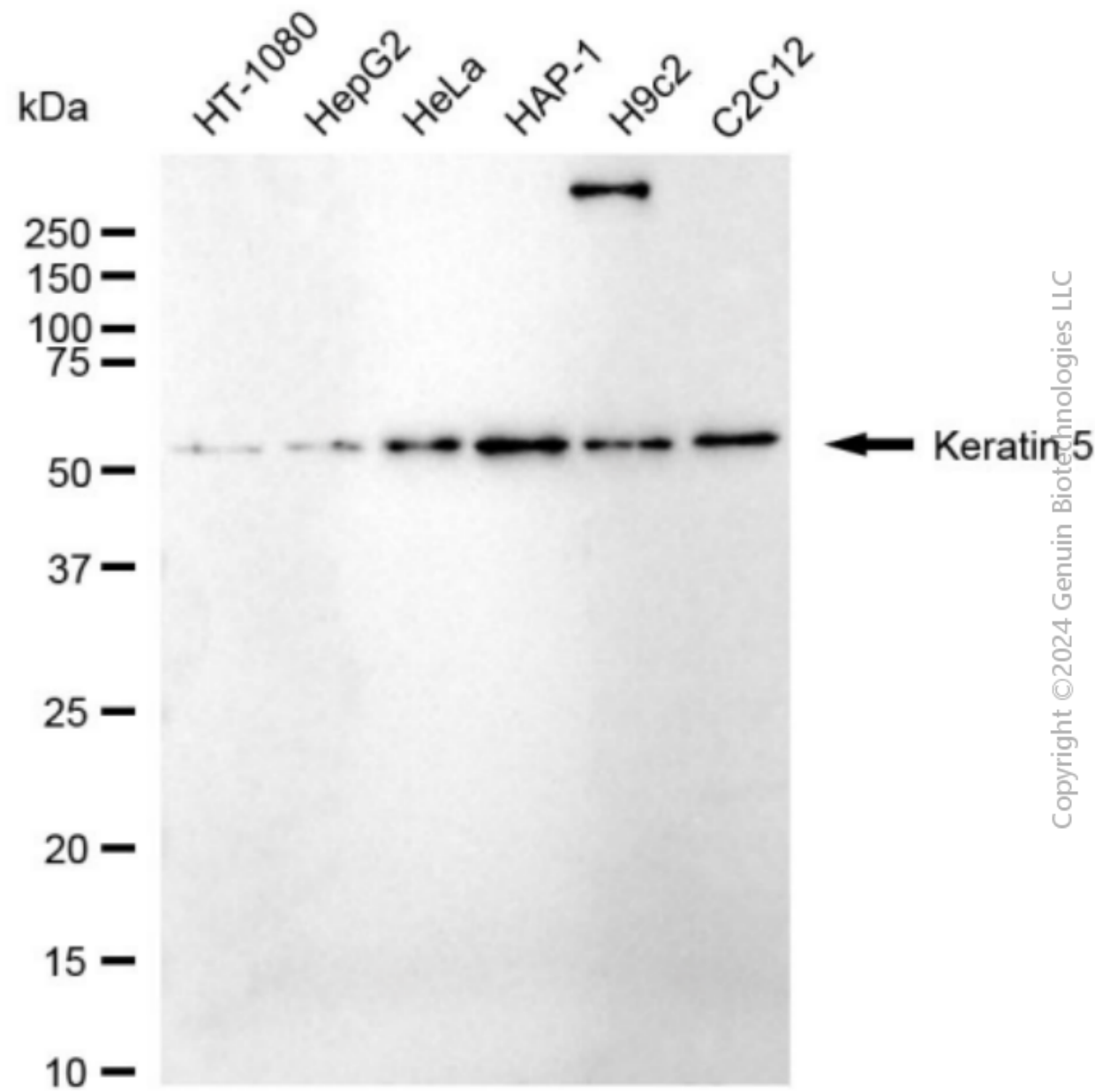
SUPPORT@GENUINBIOTECH.COM
TEL: +1-540-855-7041

ORDERS

SALES@GENUINBIOTECH.COM
FAX: +1-540-855-7041

WWW.GENUINBIOTECH.COM

Validation Data



Western blotting analysis using anti-Keratin 5 antibody (Cat#2848). Total cell lysates (30 µg) from various cell lines were loaded and separated by SDS-PAGE. The blot was incubated with anti-Keratin 5 antibody (Cat#2848, 1:5,000) and HRP-conjugated goat anti-rabbit secondary antibody (Cat#201, 1:20,000) respectively. Image was developed using FeQ™ ECL Substrate Kit (Cat#226).

SUPPORT

SUPPORT@GENUINBIOTECH.COM
TEL: +1-540-855-7041

ORDERS

SALES@GENUINBIOTECH.COM
FAX: +1-540-855-7041

WWW.GENUINBIOTECH.COM