

# Anti-MutS Homolog 6 Rabbit Monoclonal Antibody



**Catalog #: 2850**

## Aliases

MSH6; MutS Homolog 6; MSH-6; GTBP; DNA Mismatch Repair Protein Msh6; G/T Mismatch-Binding Protein; MutS-Alpha 160 KDa Subunit; MutS Protein Homolog 6; GTMBP; P160; MutS (E. Coli) Homolog 6; MutS Homolog 6 (E. Coli); Sperm-Associated Protein; MutS-Like Protein 6; HNPCC5; LYNCH5; MMRCS3; HMSH6; HSAP

## Background

Gene Name: MSH6

NCBI Gene Entry: [2956](#)

UniProt Entry: [P52701](#)

## Application Information

Molecular Weight: Predicted, 153 kDa; observed, 160 kDa

Clonality: Rabbit monoclonal antibody

Clone ID: 24GB2835

Species Reactivity: Human, mouse, rat

Applications Tested: Western blotting (WB), flow cytometry (FCM), immunocytochemistry (IC)

## Immunogen

Recombinant protein of human MSH6

## Isotype

Rabbit IgG

## Storage Buffer

Supplied in PBS (pH 7.4) containing 50% glycerol, and 0.02% sodium azide.

## Storage

Store at -20 °C for one year.

## Recommended Dilutions

Western Blotting (WB): 1:1,000-1:5,000

Flow Cytometry (FCM): 1:2,000

Immunocytochemistry (IC): 1:100-1:1,000

---

### SUPPORT

SUPPORT@GENUINBIOTECH.COM  
TEL: +1-540-855-7041

### ORDERS

SALES@GENUINBIOTECH.COM  
FAX: +1-540-855-7041

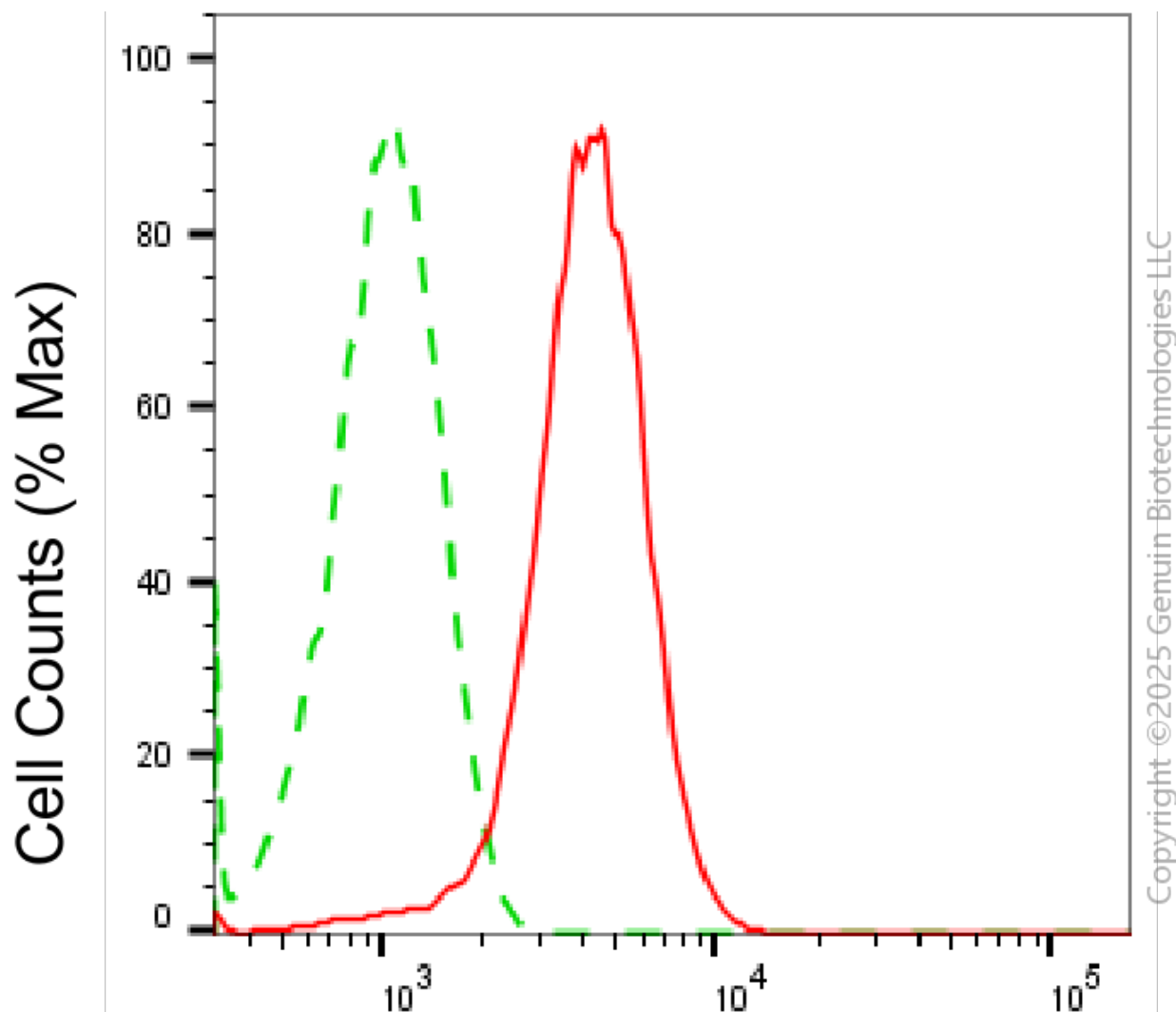
[WWW.GENUINBIOTECH.COM](http://WWW.GENUINBIOTECH.COM)

# Anti-MutS Homolog 6 Rabbit Monoclonal Antibody

PAGE 2

**Note:** This product is for research use only.

## Validation Data



## MSH6-Alexa Fluor® 647

Flow cytometric analysis of MSH6 expression in HepG2 cells using anti-MSH6 antibody (Cat#2850, 1:2,000). Green, isotype control; red, MSH6.

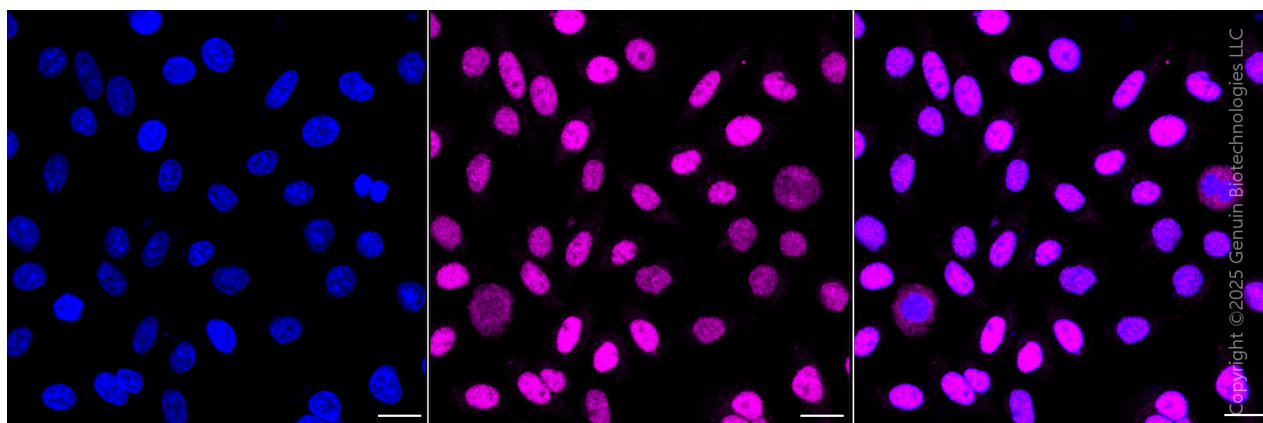
### SUPPORT

SUPPORT@GENUINBIOTECH.COM  
TEL: +1-540-855-7041

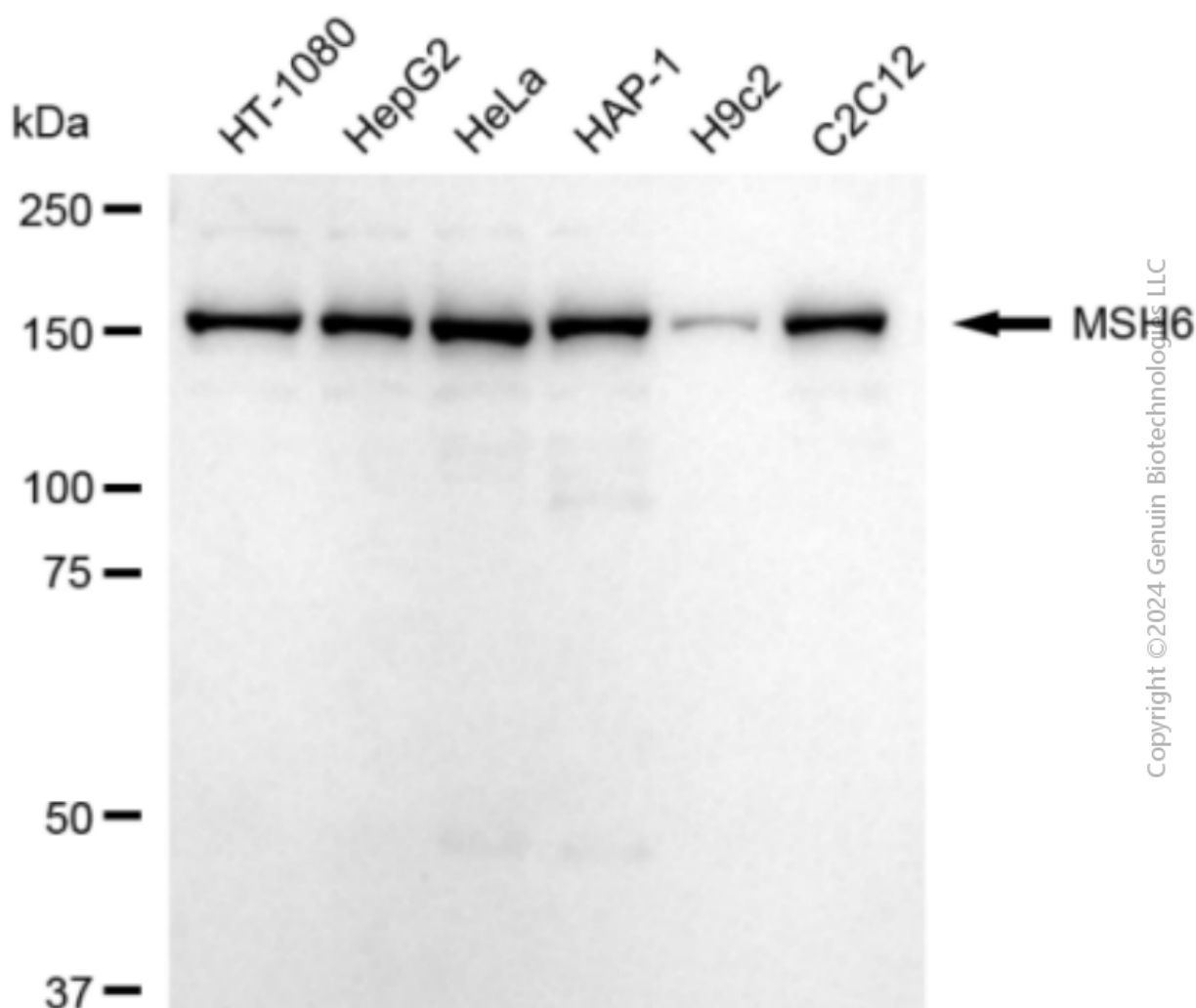
### ORDERS

SALES@GENUINBIOTECH.COM  
FAX: +1-540-855-7041

[WWW.GENUINBIOTECH.COM](http://WWW.GENUINBIOTECH.COM)



Immunocytochemical staining of HepG2 cells with anti-MSH6 antibody(Cat#2850, 1:1,000) . Nuclei were stained blue with DAPI; MSH6 was stained magenta with Alexa Fluor® 647. Images were taken using Leica stellaris 5. Protein abundance based on laser Intensity and smart gain: Medium. Scale bar, 20  $\mu$ m.



Western blotting analysis using anti-MSH6 antibody (Cat#2850). Total cell lysates (30  $\mu$ g) from

## **Anti-MutS Homolog 6 Rabbit Monoclonal Antibody**

PAGE 4

various cell lines were loaded and separated by SDS-PAGE. The blot was incubated with anti-MSH6 antibody (Cat#2850, 1:5,000) and HRP-conjugated goat anti-rabbit secondary antibody (Cat#201, 1:20,000) respectively. Image was developed using FeQ™ ECL Substrate Kit (Cat#226).

---

### **SUPPORT**

SUPPORT@GENUINBIOTECH.COM  
TEL: +1-540-855-7041

### **ORDERS**

SALES@GENUINBIOTECH.COM  
FAX: +1-540-855-7041

**WWW.GENUINBIOTECH.COM**