

## Catalog #: 2852

## Aliases

ACTA2; Actin Alpha 2, Smooth Muscle; ACTSA; Cell Growth-Inhibiting Gene 46 Protein; Actin, Alpha 2, Smooth Muscle, Aorta; Actin, Aortic Smooth Muscle; Alpha-Cardiac Actin; Alpha-Actin-2; EC 3.6.4.-; ACTVS;  $\alpha$ -SMA; alpha smooth muscle Actin; a SMA

## Background

Gene Name: ACTA2

NCBI Gene Entry: [59](#)

UniProt Entry: [P62736](#)

## Application Information

Molecular Weight: Predicted, 42 kDa; observed, 43 kDa

Clonality: Rabbit monoclonal antibody

Clone ID: 24GB2845

Species Reactivity: Mouse, rat

Applications Tested: Western blotting (WB), flow cytometry (FCM), immunocytochemistry (IC), immunohistochemistry (IHC)

## Immunogen

Recombinant protein of human Smooth Muscle Actin

## Isotype

Rabbit IgG

## Storage Buffer

Supplied in PBS (pH 7.4) containing 50% glycerol, and 0.02% sodium azide.

## Storage

Store at -20 °C for one year.

## Recommended Dilutions

Western Blotting (WB): 1:1,000-1:5,000

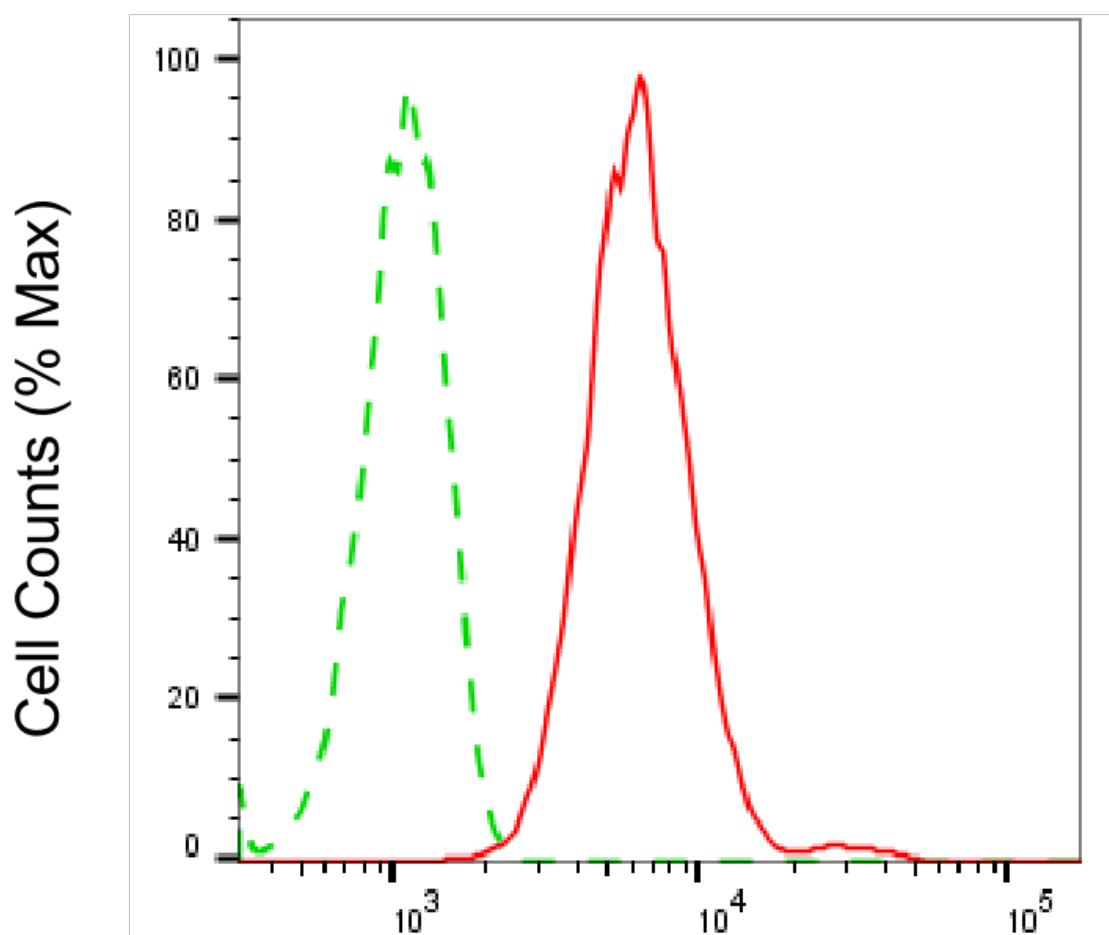
Flow Cytometry (FCM): 1:2,000

Immunocytochemistry (IC): 1:100-1:1,000

Immunohistochemistry (IHC): 1:250-1:500

**Note:** This product is for research use only.

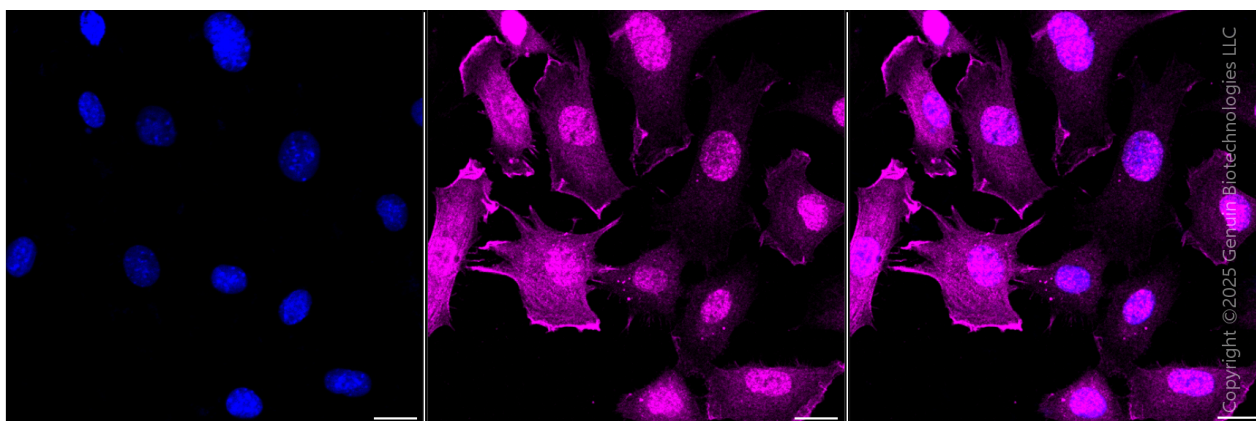
## Validation Data



Copyright ©2025 Genuin Biotechnologies LLC

## $\alpha$ smooth muscle Actin-Alexa Fluor<sup>®</sup> 647

Flow cytometric analysis of  $\alpha$  smooth muscle Actin expression in C2C12 cells using anti- $\alpha$  smooth muscle Actin antibody (Cat#2852, 1:2,000). Green, isotype control; red,  $\alpha$  smooth muscle Actin.



Copyright ©2025 Genuin Biotechnologies LLC

### SUPPORT

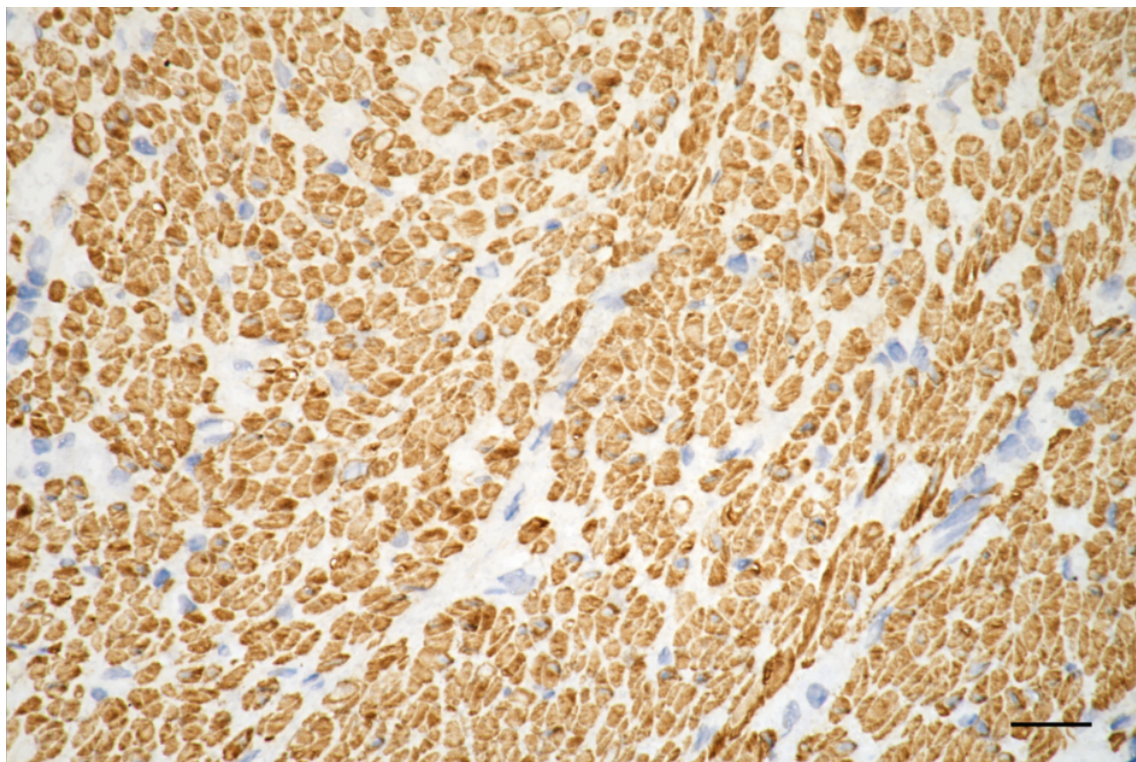
SUPPORT@GENUINBIOTECH.COM  
TEL: +1-540-855-7041

### ORDERS

SALES@GENUINBIOTECH.COM  
FAX: +1-540-855-7041

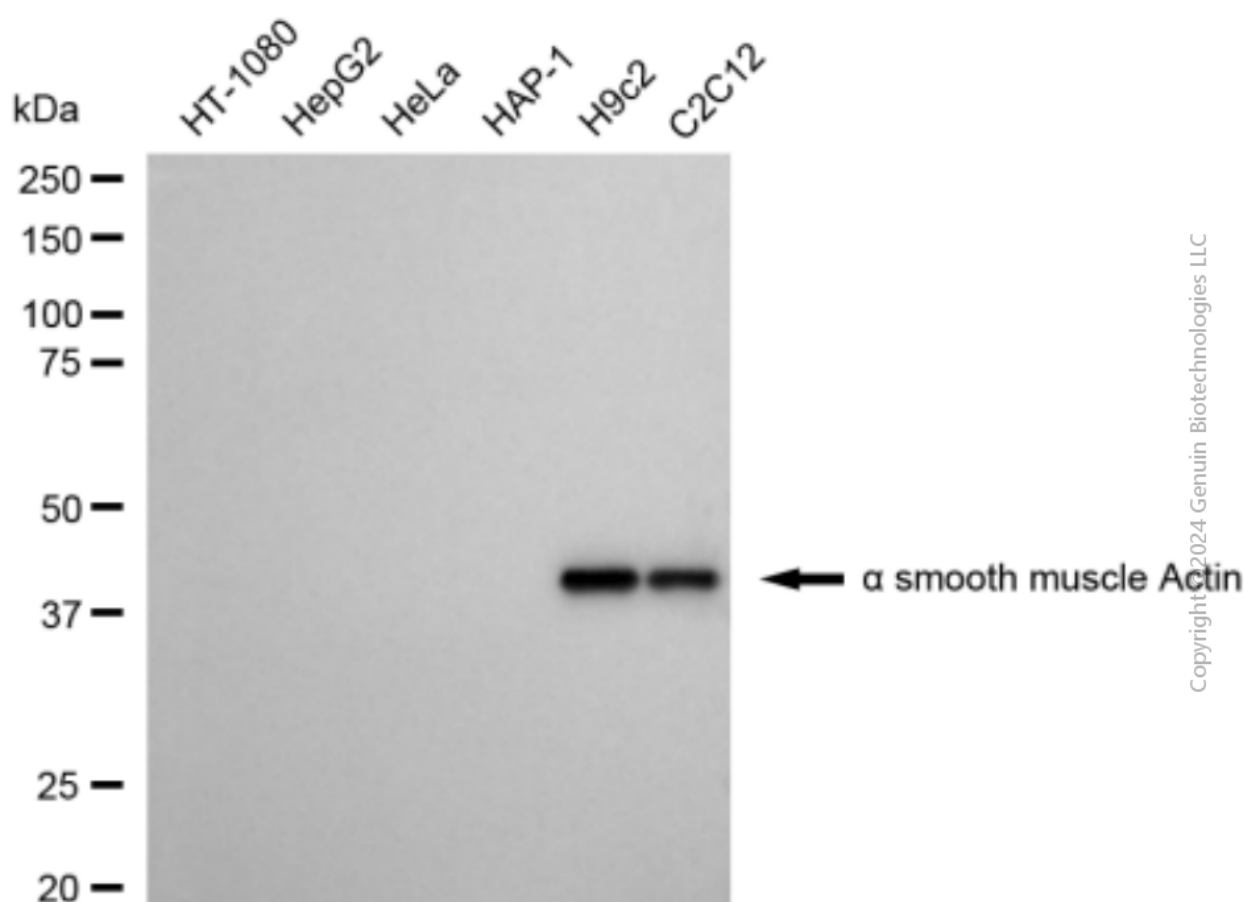
WWW.GENUINBIOTECH.COM

Immunocytochemical staining of C2C12 cells with anti- $\alpha$  smooth muscle Actin antibody (Cat#2852, 1:1,000). Nuclei were stained blue with DAPI;  $\alpha$  smooth muscle Actin was stained magenta with Alexa Fluor® 647. Images were taken using Leica stellaris 5. Protein abundance based on laser Intensity and smart gain: Medium. Scale bar, 20  $\mu$ m.



Copyright ©2025 Genuin Biotechnologies LLC

Immunohistochemistry was performed on paraffin-embedded human sigmoid colon carcinoma using anti-alpha smooth muscle actin antibody (Cat#2852, 1:500). Antigen retrieval was done in sodium citrate buffer (pH 6.0). DAB was used for detection, with hematoxylin counterstaining. Images were acquired using a Nikon Ci-L Plus microscope (40 $\times$  objective). Scale bar: 25  $\mu$ m.



Western blotting analysis using anti-alpha smooth muscle Actin antibody (Cat#2852). Total cell lysates (30 µg) from various cell lines were loaded and separated by SDS-PAGE. The blot was incubated with anti-alpha smooth muscle Actin antibody (Cat#2852, 1:5,000) and HRP-conjugated goat anti-rabbit secondary antibody (Cat#201, 1:20,000) respectively. Image was developed using FeQ™ ECL Substrate Kit (Cat#226).

**SUPPORT**

SUPPORT@GENUINBIOTECH.COM  
TEL: +1-540-855-7041

**ORDERS**

SALES@GENUINBIOTECH.COM  
FAX: +1-540-855-7041

[WWW.GENUINBIOTECH.COM](http://WWW.GENUINBIOTECH.COM)