

Anti-Membrane Metalloendopeptidase Rabbit Monoclonal Antibody



Catalog #: 2854

Aliases

MME; Membrane Metalloendopeptidase; CALLA; NEP; Neprilysin; CD10; Common Acute Lymphocytic Leukemia Antigen; Neutral Endopeptidase 24.11; Skin Fibroblast Elastase; Neutral Endopeptidase; Atriopeptidase; Enkephalinase; EC 3.4.24.11; SFE; Membrane Metallo-Endopeptidase (Neutral Endopeptidase, Enkephalinase, CALLA, CD10); Neprilysin-390; Neprilysin-411; CD10 Antigen; EC 3.4.24; CMT2T; SCA43; EPN

Background

Gene Name: MME

NCBI Gene Entry: [4311](#)

UniProt Entry: [P08473](#)

Application Information

Molecular Weight: Predicted, 86 kDa; observed, 85 kDa

Clonality: Rabbit monoclonal antibody

Clone ID: 24GB2850

Species Reactivity: Human, mouse, rat

Applications Tested: Western blotting (WB), flow cytometry (FCM), immunocytochemistry (IC)

Immunogen

Recombinant protein of human CD10

Isotype

Rabbit IgG

Storage Buffer

Supplied in PBS (pH 7.4) containing 50% glycerol, and 0.02% sodium azide.

Storage

Store at -20 °C for one year.

Recommended Dilutions

Western Blotting (WB): 1:1,000-1:5,000

Flow Cytometry (FCM): 1:2,000

Immunocytochemistry (IC): 1:100-1:1,000

SUPPORT

SUPPORT@GENUINBIOTECH.COM
TEL: +1-540-855-7041

ORDERS

SALES@GENUINBIOTECH.COM
FAX: +1-540-855-7041

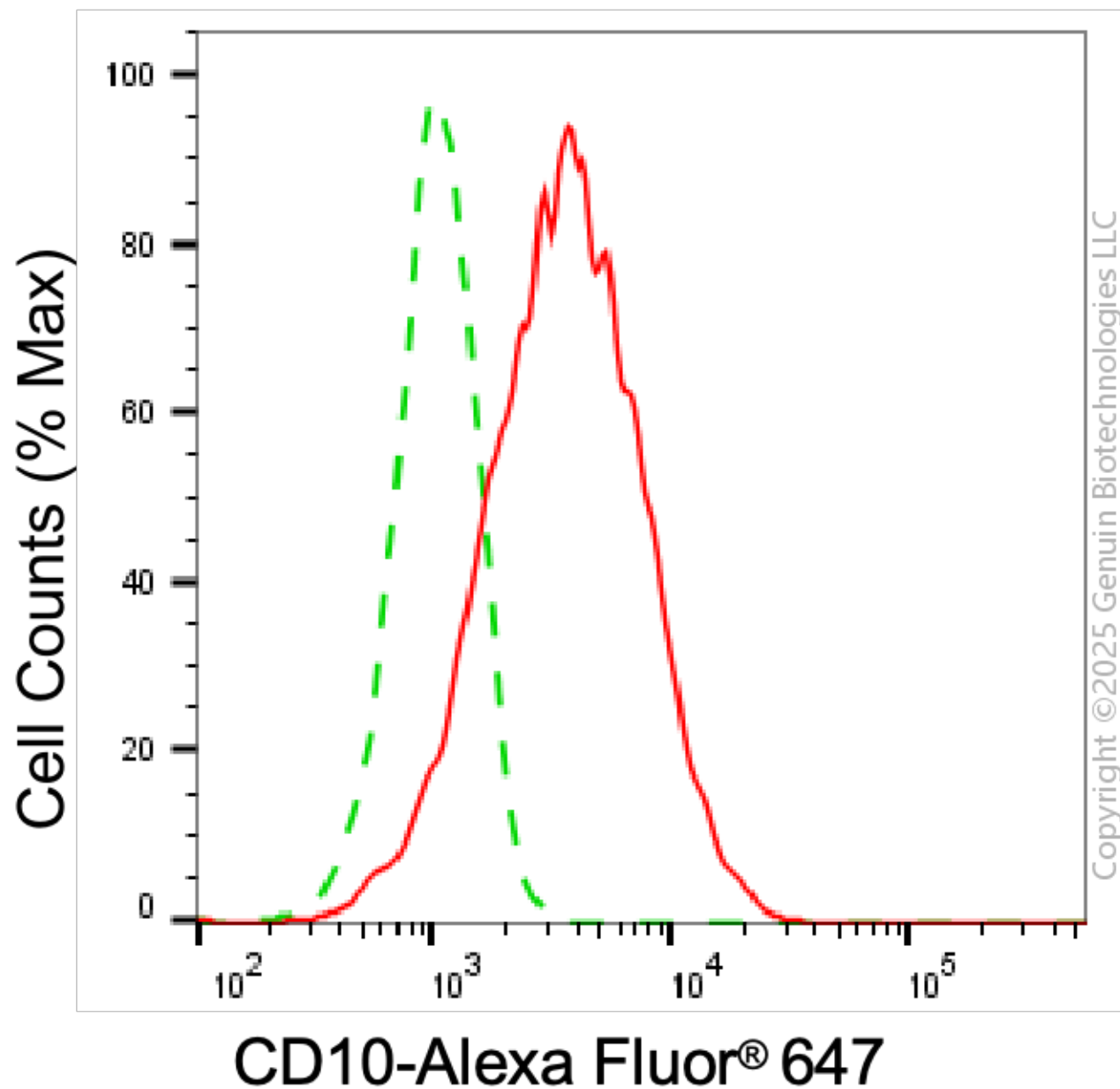
WWW.GENUINBIOTECH.COM

Anti-Membrane Metalloendopeptidase Rabbit Monoclonal Antibody

PAGE 2

Note: This product is for research use only.

Validation Data



Flow cytometric analysis of CD10 expression in HT-1080 cells using anti-CD10 antibody (Cat#2854, 1:2,000). Green, isotype control; red, CD10.

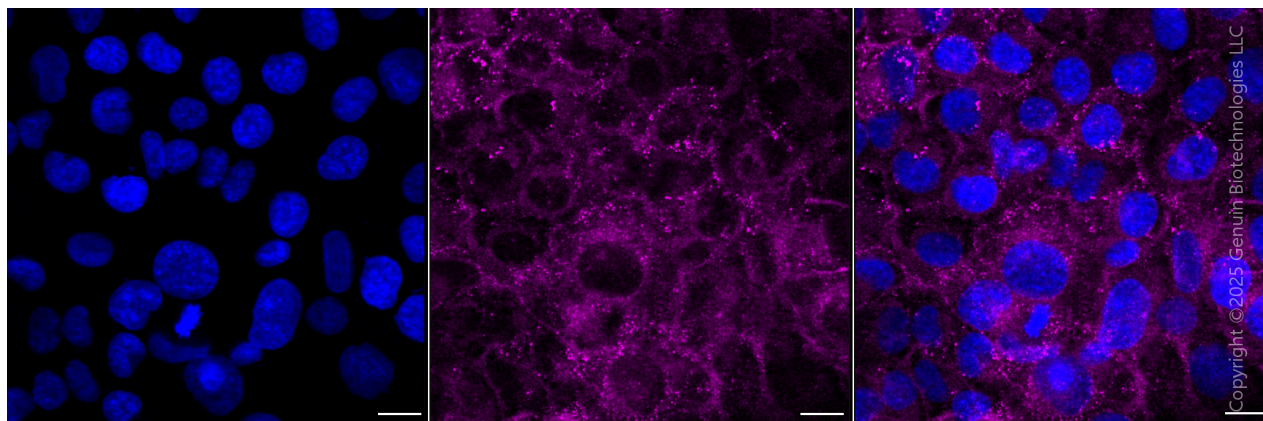
SUPPORT

SUPPORT@GENUINBIOTECH.COM
TEL: +1-540-855-7041

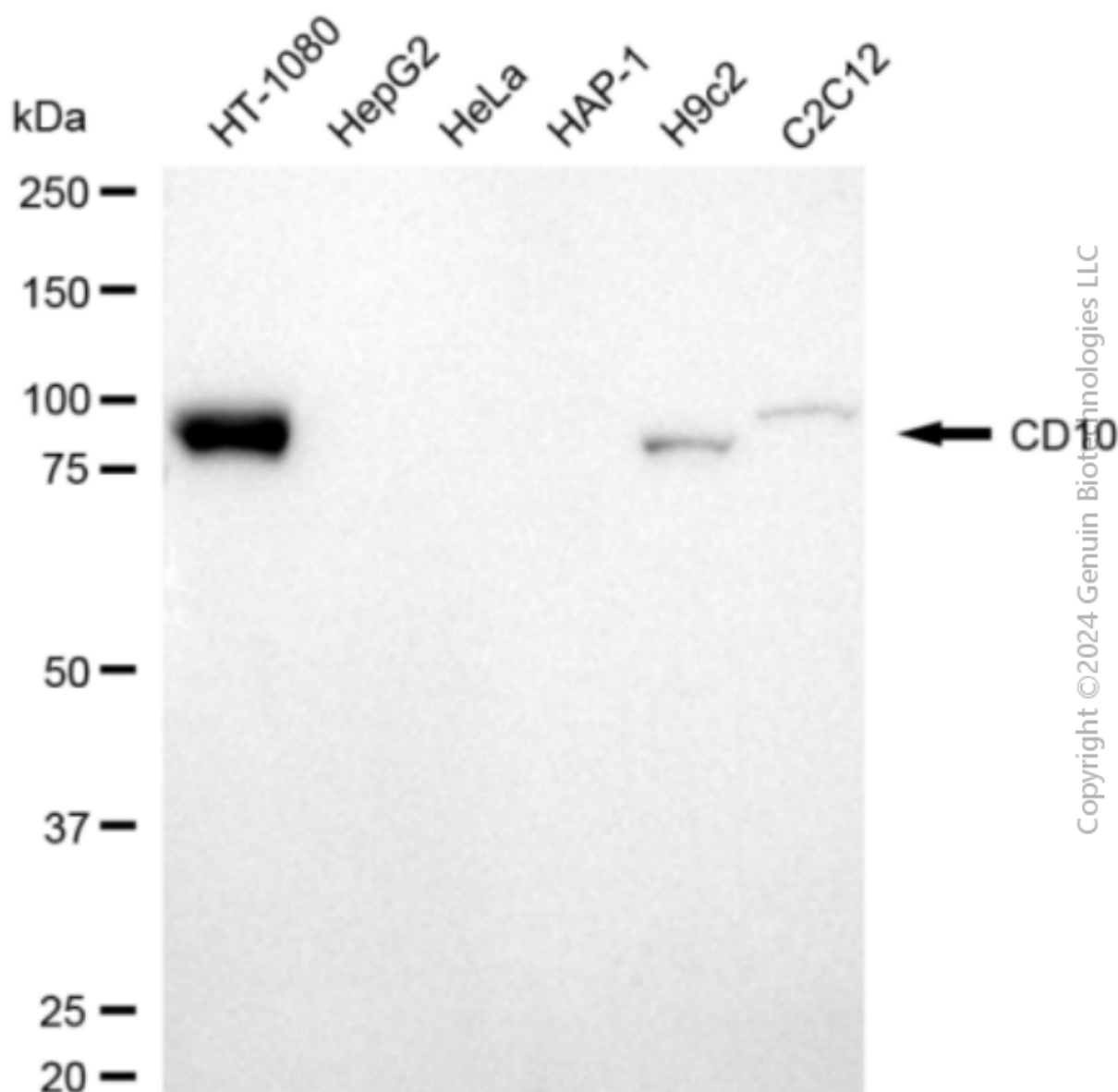
ORDERS

SALES@GENUINBIOTECH.COM
FAX: +1-540-855-7041

WWW.GENUINBIOTECH.COM



Immunocytochemical staining of HT-1080 cells with anti-CD10 antibody (Cat#2854, 1:1,000) . Nuclei were stained blue with DAPI; CD10 was stained magenta with Alexa Fluor® 647. Images were taken using Leica stellaris 5. Protein abundance based on laser Intensity and Smart Gain□ Medium. Scale bar, 20 μ m.



Western blotting analysis using anti-CD10 antibody (Cat#2854). Total cell lysates (30 µg) from various cell lines were loaded and separated by SDS-PAGE. The blot was incubated with anti-CD10 antibody (Cat#2854, 1:5,000) and HRP-conjugated goat anti-rabbit secondary antibody (Cat#201, 1:20,000) respectively. Image was developed using FeQ™ ECL Substrate Kit (Cat#226).