

## Catalog #: 2855

## Aliases

ACTB; Actin Beta; Actin, Cytoplasmic 1; PS1TP5-Binding Protein 1; Beta Cytoskeletal Actin; I(2)-Actin; Beta-Actin; EC 3.6.4.-; PS1TP5BP1; B-Actin; BKRNS; BRWS1; CSMH; DDS1; THC8; BNS

## Background

Gene Name: ACTB

NCBI Gene Entry: [60](#)

UniProt Entry: [P60709](#)

## Application Information

Molecular Weight: Predicted, 42 kDa; observed, 45 kDa

Clonality: Rabbit monoclonal antibody

Clone ID: 24GB2855

Species Reactivity: Human, mouse, rat

Applications Tested: Western blotting (WB), flow cytometry (FCM), immunohistochemistry (IHC)

## Immunogen

Recombinant protein of human Beta-actin

## Isotype

Rabbit IgG

## Storage Buffer

Supplied in PBS (pH 7.4) containing 50% glycerol, and 0.02% sodium azide.

## Storage

Store at -20 °C for one year.

## Recommended Dilutions

Western Blotting (WB): 1:1,000-1:5,000

Flow Cytometry (FCM): 1:2,000

Immunohistochemistry (IHC): 1:100-1:200

---

### SUPPORT

SUPPORT@GENUINBIOTECH.COM  
TEL: +1-540-855-7041

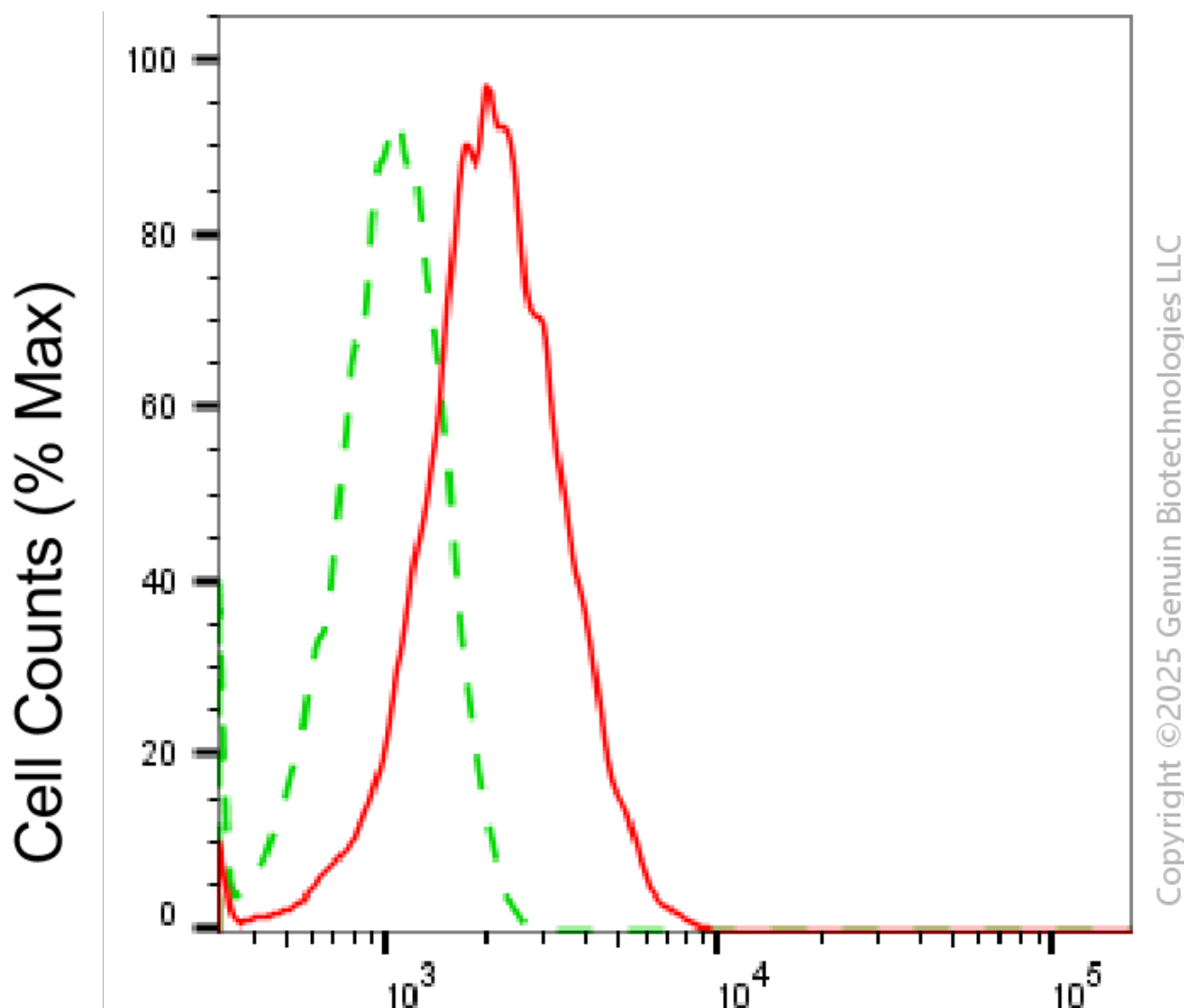
### ORDERS

SALES@GENUINBIOTECH.COM  
FAX: +1-540-855-7041

[WWW.GENUINBIOTECH.COM](http://WWW.GENUINBIOTECH.COM)

**Note:** This product is for research use only.

## Validation Data



Copyright ©2025 Genuin Biotechnologies LLC

## $\beta$ -actin-Alexa Fluor® 647

Flow cytometric analysis of  $\beta$ -actin expression in HepG2 cells using anti- $\beta$ -actin antibody (Cat#2855, 1:2,000). Green, isotype control; red,  $\beta$ -actin.

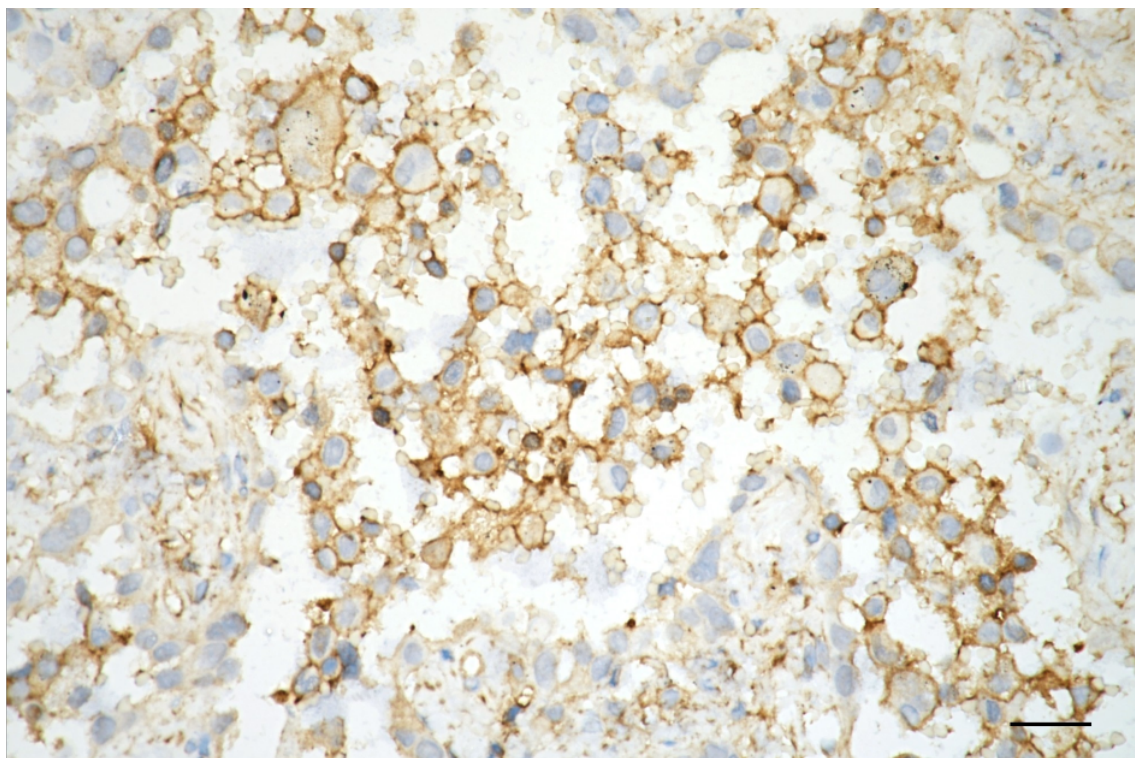
### SUPPORT

SUPPORT@GENUINBIOTECH.COM  
TEL: +1-540-855-7041

### ORDERS

SALES@GENUINBIOTECH.COM  
FAX: +1-540-855-7041

[WWW.GENUINBIOTECH.COM](http://WWW.GENUINBIOTECH.COM)



Copyright ©2025 Genuin Biotechnologies LLC

Immunohistochemistry was performed on paraffin-embedded human lung adenocarcinoma using anti-beta actin antibody (Cat#2855, 1:200). Antigen retrieval was done in sodium citrate buffer (pH 6.0). DAB was used for detection, with hematoxylin counterstaining. Images were acquired using a Nikon Ci-L Plus microscope (40× objective). Scale bar: 25  $\mu$ m.

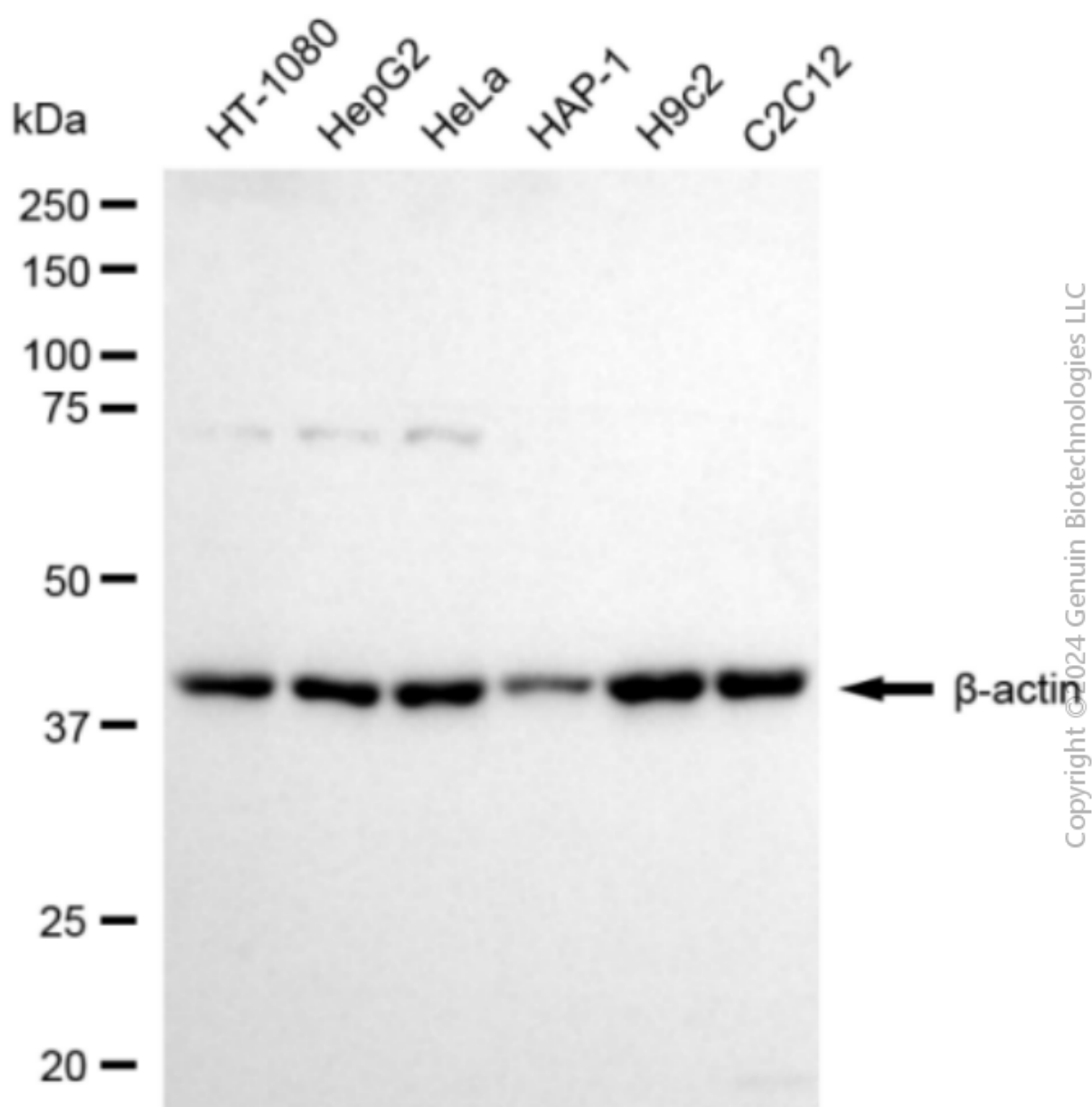
## SUPPORT

SUPPORT@GENUINBIOTECH.COM  
TEL: +1-540-855-7041

## ORDERS

SALES@GENUINBIOTECH.COM  
FAX: +1-540-855-7041

[WWW.GENUINBIOTECH.COM](http://WWW.GENUINBIOTECH.COM)



Western blotting analysis using anti-beta actin antibody (Cat#2855). Total cell lysates (30  $\mu$ g) from various cell lines were loaded and separated by SDS-PAGE. The blot was incubated with anti-beta actin antibody (Cat#2855, 1:5,000) and HRP-conjugated goat anti-rabbit secondary antibody (Cat#201, 1:20,000) respectively. Image was developed using FeQ<sup>TM</sup> ECL Substrate Kit (Cat#226).