

## Catalog #: 2856

## Aliases

KRT6C; Keratin 6C; KRT6E; Keratin, Type II Cytoskeletal 6C; Type-II Keratin Kb12; Keratin 6C, Type II; Cytokeratin-6C; Cytokeratin-6E; Keratin K6h; Keratin 6E; CK-6C; CK-6E; K6C; Keratin-6C; PPKNEFD; K6E

## Background

Gene Name: KRT6C

NCBI Gene Entry: [286887](#)

UniProt Entry: [P48668](#)

## Application Information

Molecular Weight: Predicted, 60 kDa; observed, 50 kDa

Clonality: Rabbit monoclonal antibody

Clone ID: 24GB2860

Species Reactivity: Human

Applications Tested: Western blotting (WB), immunocytochemistry (IC), flow cytometry (FCM)

## Immunogen

Recombinant protein of human Keratin 6

## Isotype

Rabbit IgG

## Storage Buffer

Supplied in PBS (pH 7.4) containing 50% glycerol, and 0.02% sodium azide.

## Storage

Store at -20 °C for one year.

## Recommended Dilutions

Western Blotting (WB): 1:1,000-1:5,000

Immunocytochemistry (IC): 1:100-1:1,000

**Note:** This product is for research use only.

## Validation Data

---

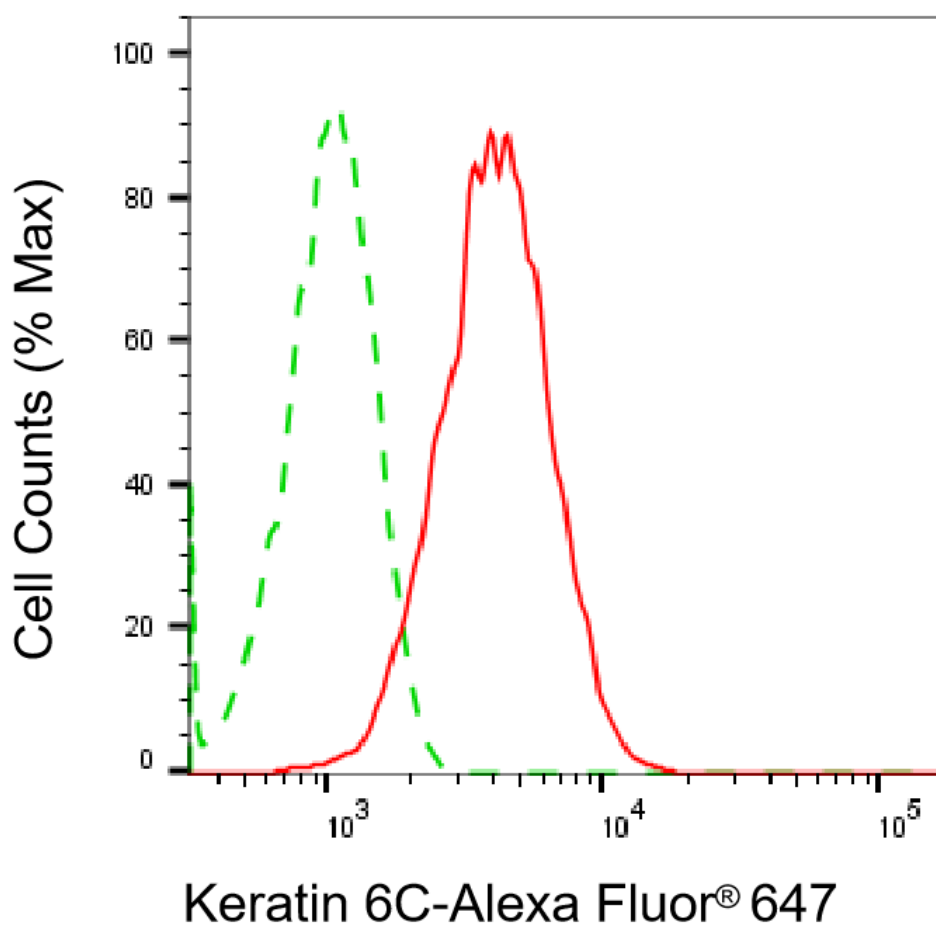
### SUPPORT

SUPPORT@GENUINBIOTECH.COM  
TEL: +1-540-855-7041

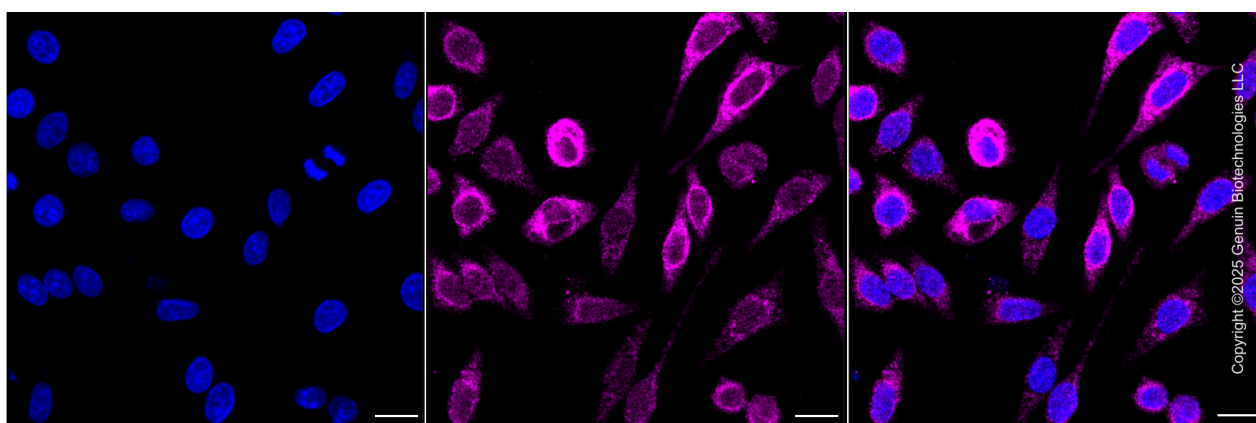
### ORDERS

SALES@GENUINBIOTECH.COM  
FAX: +1-540-855-7041

[WWW.GENUINBIOTECH.COM](http://WWW.GENUINBIOTECH.COM)



Flow cytometric analysis of Keratin 6C expression in HepG2 cells using anti-Keratin 6C antibody (Cat#2856, 1:2,000). Green, isotype control; red, Keratin 6C.



Immunocytochemical staining of HepG2 cells with anti-Keratin 6C antibody (Cat#2856, 1:1000). Nuclei were stained blue with DAPI; Keratin 6C was stained magenta with Alexa Fluor® 647. Images were taken using Leica stellaris 5. Protein abundance based on laser Intensity and smart gain: Medium. Scale bar, 20 µm.

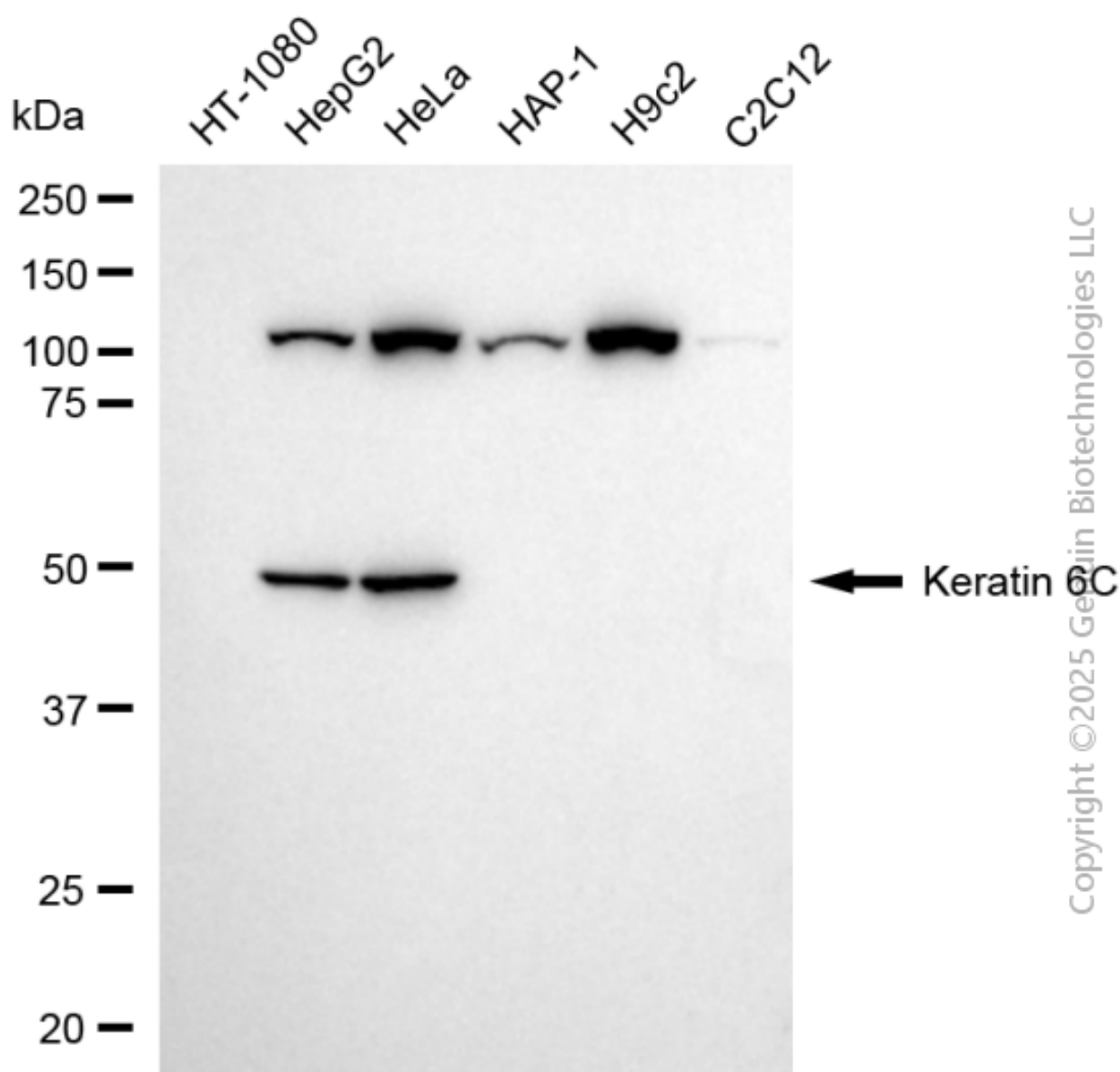
**SUPPORT**

SUPPORT@GENUINBIOTECH.COM  
TEL: +1-540-855-7041

**ORDERS**

SALES@GENUINBIOTECH.COM  
FAX: +1-540-855-7041

[WWW.GENUINBIOTECH.COM](http://WWW.GENUINBIOTECH.COM)



Western blotting analysis using anti-Keratin 6C antibody (Cat#2856). Total cell lysates (30  $\mu$ g) from various cell lines were loaded and separated by SDS-PAGE. The blot was incubated with anti-Keratin 6C antibody (Cat#2856, 1:5,000) and HRP-conjugated goat anti-rabbit secondary antibody (Cat#201, 1:20,000) respectively. Image was developed using FeQ<sup>TM</sup> ECL Substrate Kit (Cat#226).