

Catalog #: 2857

Aliases

KRT8; Keratin 8; CK-8; CYK8; K8; CARD2; K2C8; CK8; KO; Keratin, Type II Cytoskeletal 8; Type-II Keratin Kb8; Keratin 8, Type II; Cytokeratin-8; Keratin-8

Background

Gene Name: KRT8

NCBI Gene Entry: [3856](#)

UniProt Entry: [P05787](#)

Application Information

Molecular Weight: Predicted, 54 kDa; observed, 48 kDa

Clonality: Rabbit monoclonal antibody

Clone ID: 24GB2865

Species Reactivity: Human

Applications Tested: Western blotting (WB), flow cytometry (FCM), immunocytochemistry (IC)

Immunogen

Recombinant protein of human Cytokeratin 8

Isotype

Rabbit IgG

Storage Buffer

Supplied in PBS (pH 7.4) containing 50% glycerol, and 0.02% sodium azide.

Storage

Store at -20 °C for one year.

Recommended Dilutions

Western Blotting (WB): 1:1,000-1:5,000

Flow Cytometry (FCM): 1:2,000

Immunocytochemistry (IC): 1:100-1:1,000

Note: This product is for research use only.

Validation Data

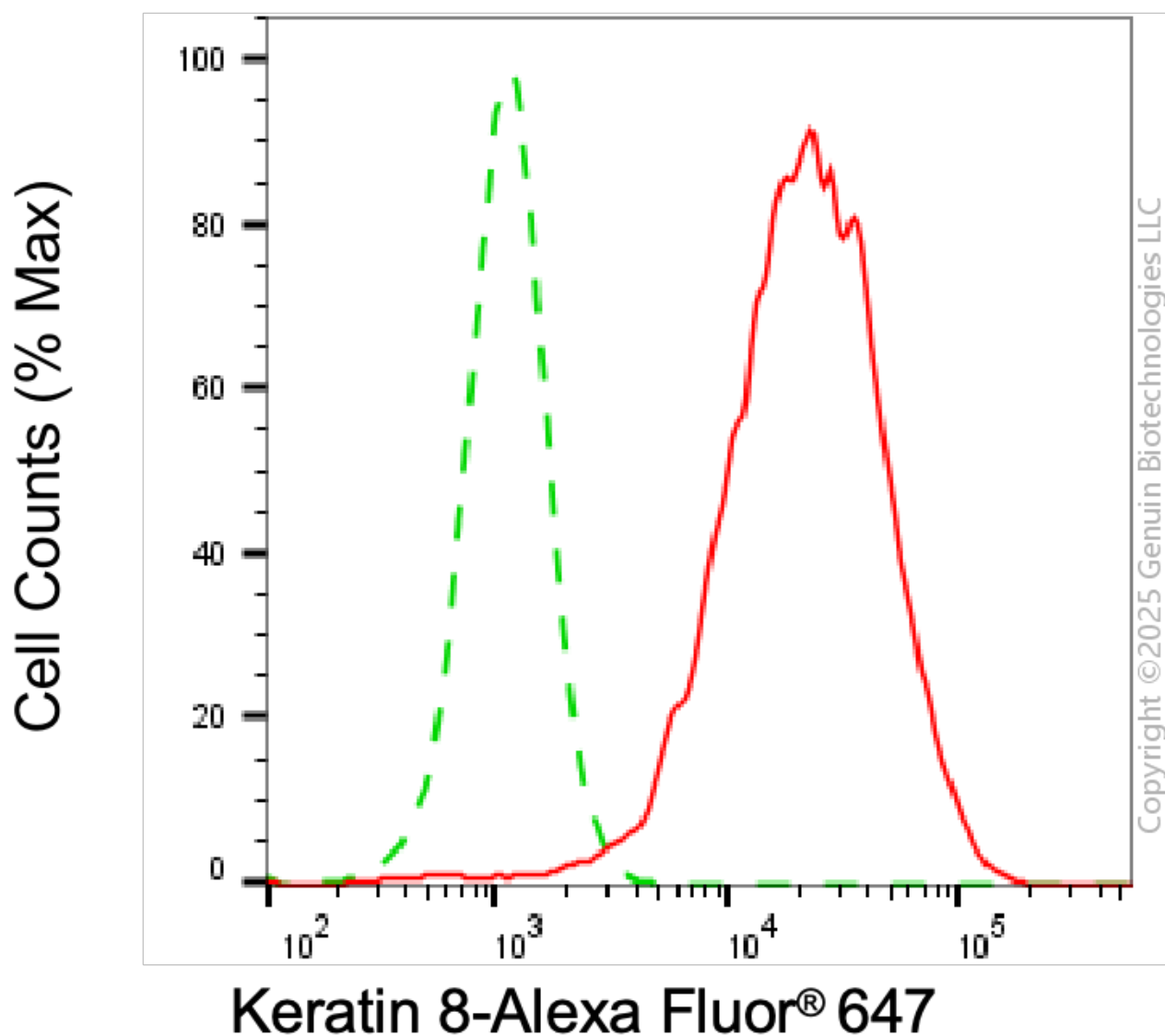
SUPPORT

SUPPORT@GENUINBIOTECH.COM
TEL: +1-540-855-7041

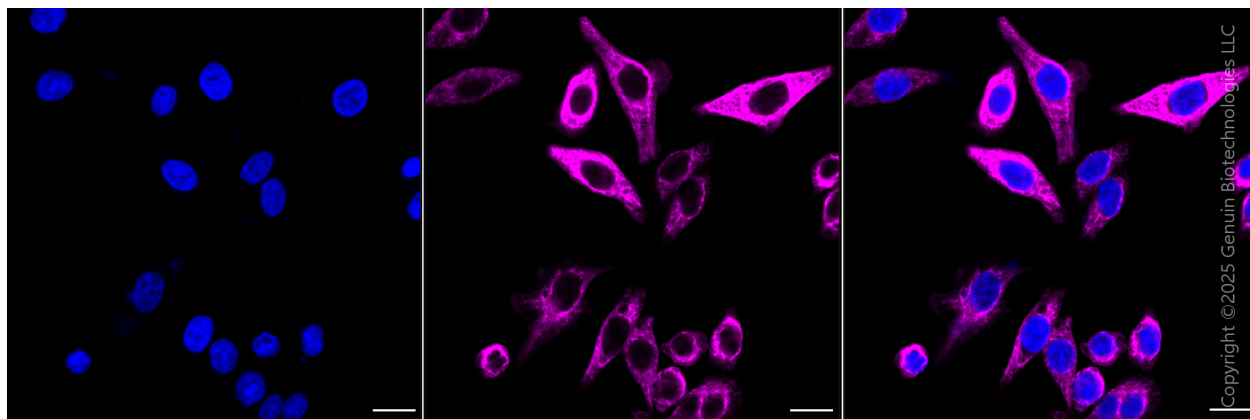
ORDERS

SALES@GENUINBIOTECH.COM
FAX: +1-540-855-7041

WWW.GENUINBIOTECH.COM



Flow cytometric analysis of Keratin 8 expression in HepG2 cells using anti-Keratin 8 antibody (Cat#2857, 1:2,000). Green, isotype control; red, Keratin 8.



Immunocytochemical staining of HepG2 cells with anti-Keratin 8 antibody (Cat#2857, 1:1,000).

SUPPORT

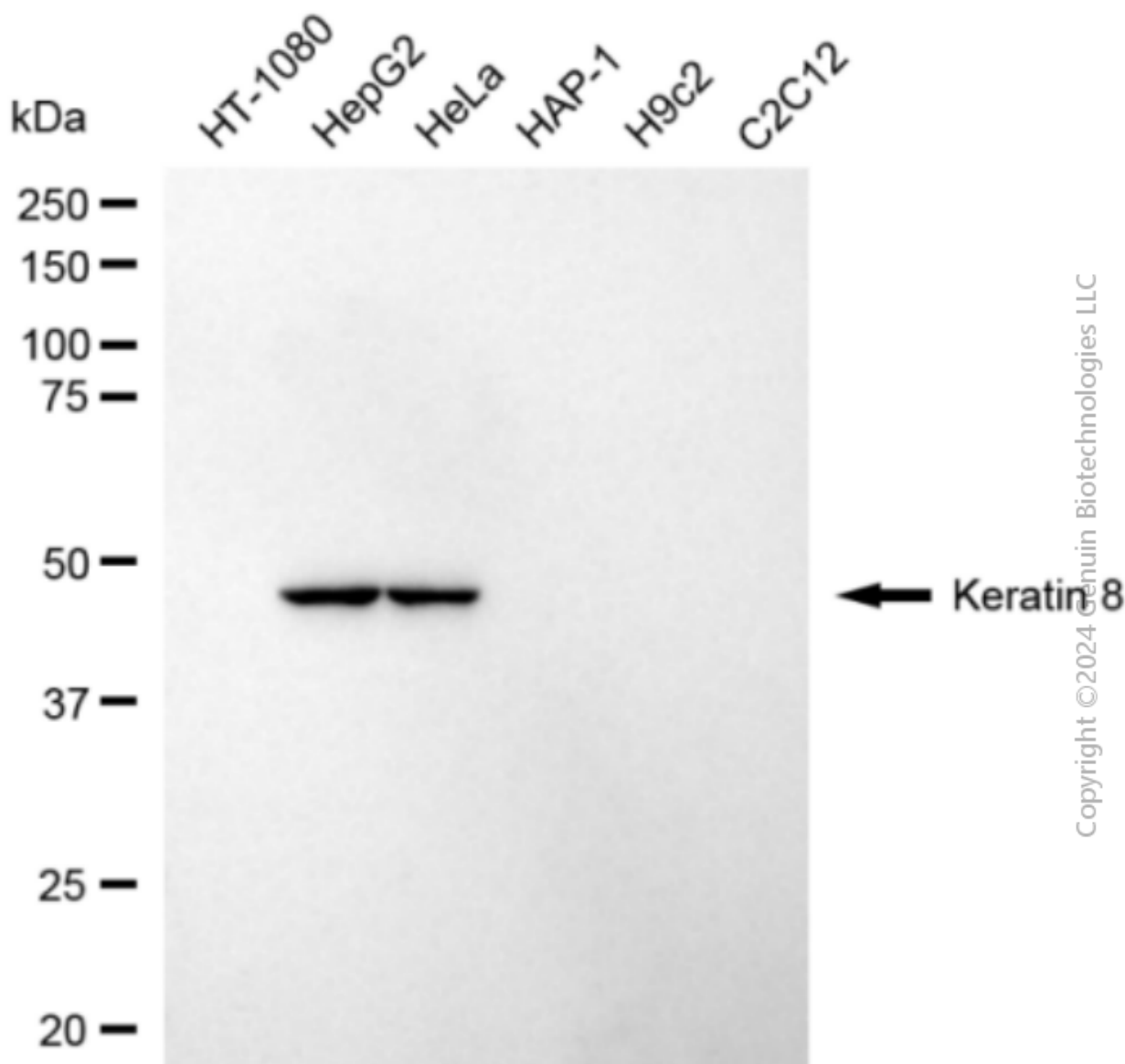
SUPPORT@GENUINBIOTECH.COM
TEL: +1-540-855-7041

ORDERS

SALES@GENUINBIOTECH.COM
FAX: +1-540-855-7041

WWW.GENUINBIOTECH.COM

Nuclei were stained blue with DAPI; Keratin 8 was stained magenta with Alexa Fluor® 647. Images were taken using Leica stellaris 5. Protein abundance based on laser Intensity and smart gain: High. Scale bar, 20 µm.



Western blotting analysis using anti-Keratin 8 antibody (Cat#2857). Total cell lysates (30 µg) from various cell lines were loaded and separated by SDS-PAGE. The blot was incubated with anti-Keratin 8 antibody (Cat#2857, 1:5,000) and HRP-conjugated goat anti-rabbit secondary antibody (Cat#201, 1:20,000) respectively. Image was developed using FeQ™ ECL Substrate Kit (Cat#226).