

Anti-Toll Like Receptor 2 Mouse Monoclonal Antibody



Catalog #: 2863

Aliases

TLR2; Toll Like Receptor 2; TIL4; Toll-Like Receptor 2; CD282; Toll/Interleukin-1 Receptor-Like Protein 4; CD282 Antigen

Background

Gene Name: TLR2

NCBI Gene Entry: [7097](#)

UniProt Entry: [O60603](#)

Application Information

Molecular Weight: Predicted, 90 kDa; observed, 85 kDa

Clonality: Mouse monoclonal antibody

Clone ID: 24GB2895

Species Reactivity: Human

Applications Tested: Western blotting (WB)

Immunogen

Recombinant protein of human CD282

Isotype

Mouse IgG1 kappa

Storage Buffer

Supplied in PBS (pH 7.4) containing 50% glycerol, and 0.02% sodium azide.

Storage

Store at -20 °C for one year.

Recommended Dilutions

Western Blotting (WB): 1:2,500-1:5,000

Note: This product is for research use only.

Validation Data

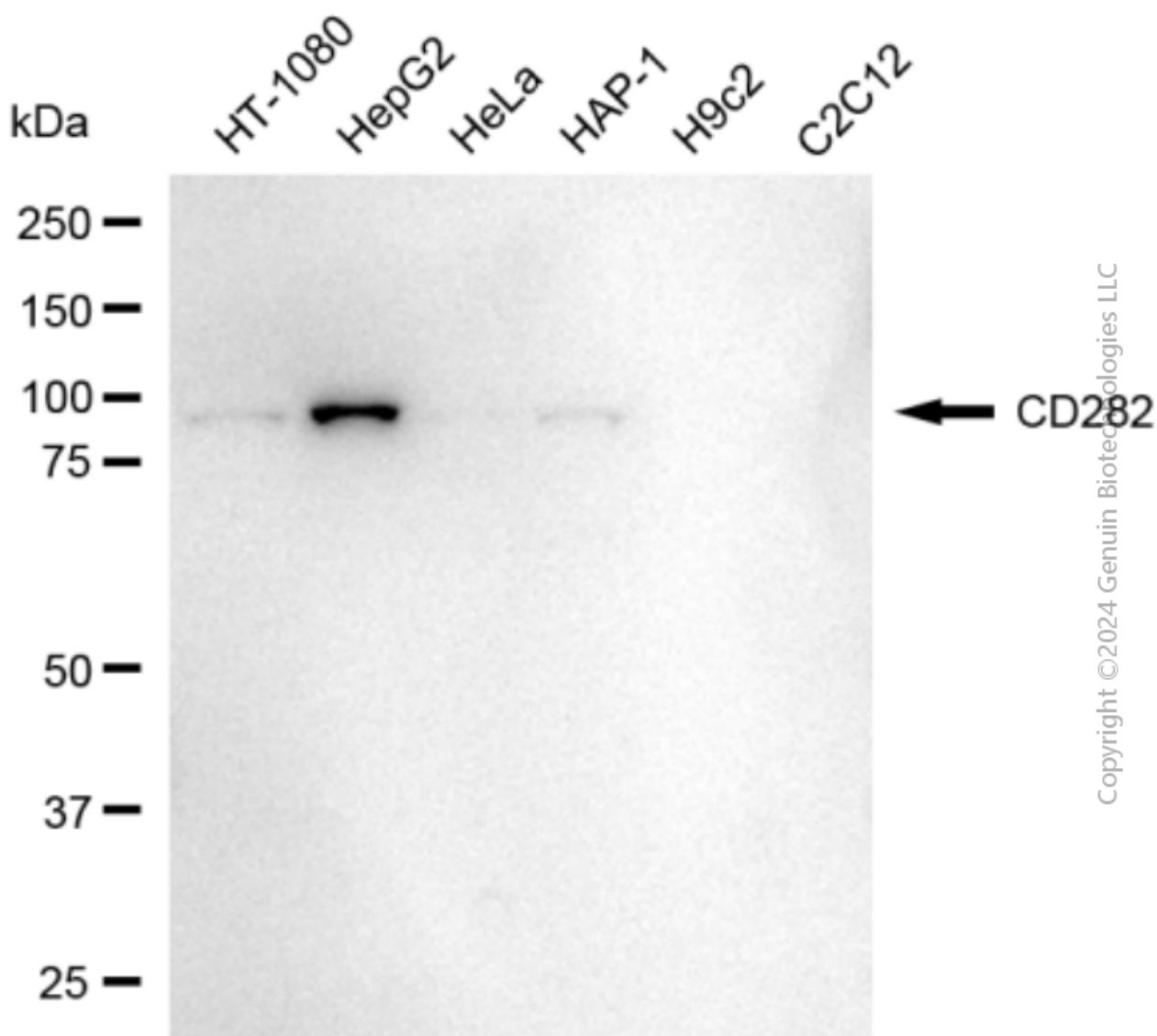
SUPPORT

SUPPORT@GENUINBIOTECH.COM
TEL: +1-540-855-7041

ORDERS

SALES@GENUINBIOTECH.COM
FAX: +1-540-855-7041

WWW.GENUINBIOTECH.COM



Western blotting analysis using anti-CD282 antibody (Cat#2863). Total cell lysates (30 μ g) from various cell lines were loaded and separated by SDS-PAGE. The blot was incubated with anti-CD282 antibody (Cat#2863, 1:5,000) and HRP-conjugated goat anti-mouse secondary antibody (Cat#101, 1:20,000) respectively. Image was developed using FeQ™ ECL Substrate Kit (Cat#226).