

Catalog #: 2864

Aliases

PLIN3; Perilipin 3; TIP47; PP17; Placental Protein 17; M6PRBP1; Mannose-6-Phosphate Receptor-Binding Protein 1; Cargo Selection Protein TIP47; 47 KDa MPR-Binding Protein; Perilipin-3; Cargo Selection Protein (Mannose 6 Phosphate Receptor Binding Protein); 47 KDa Mannose 6-Phosphate Receptor-Binding Protein; Mannose-6-Phosphate Receptor Binding Protein 1; Testicular Tissue Protein Li 114; Tail-Interacting Protein, 47 KD; MPR-BINDING PROTEIN, 47-KD

Background

Gene Name: PLIN3

NCBI Gene Entry: [10226](#)

UniProt Entry: [O60664](#)

Application Information

Molecular Weight: Predicted, 47 kDa; observed, 47 kDa

Clonality: Mouse monoclonal antibody

Clone ID: 24GB2900

Species Reactivity: Human

Applications Tested: Western blotting (WB), immunocytochemistry (IC)

Immunogen

Recombinant protein of human TIP47

Isotype

Mouse IgG2a kappa

Storage Buffer

Supplied in PBS (pH 7.4) containing 50% glycerol, and 0.02% sodium azide.

Storage

Store at -20 °C for one year.

Recommended Dilutions

Western Blotting (WB): 1:2,500-1:5,000

Immunocytochemistry (IC): 1:100-1:1,000

SUPPORT

SUPPORT@GENUINBIOTECH.COM
TEL: +1-540-855-7041

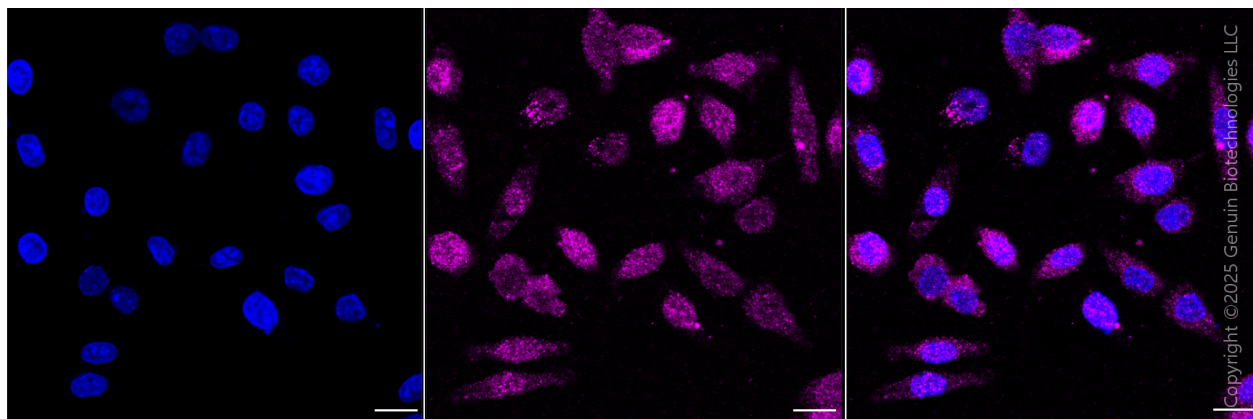
ORDERS

SALES@GENUINBIOTECH.COM
FAX: +1-540-855-7041

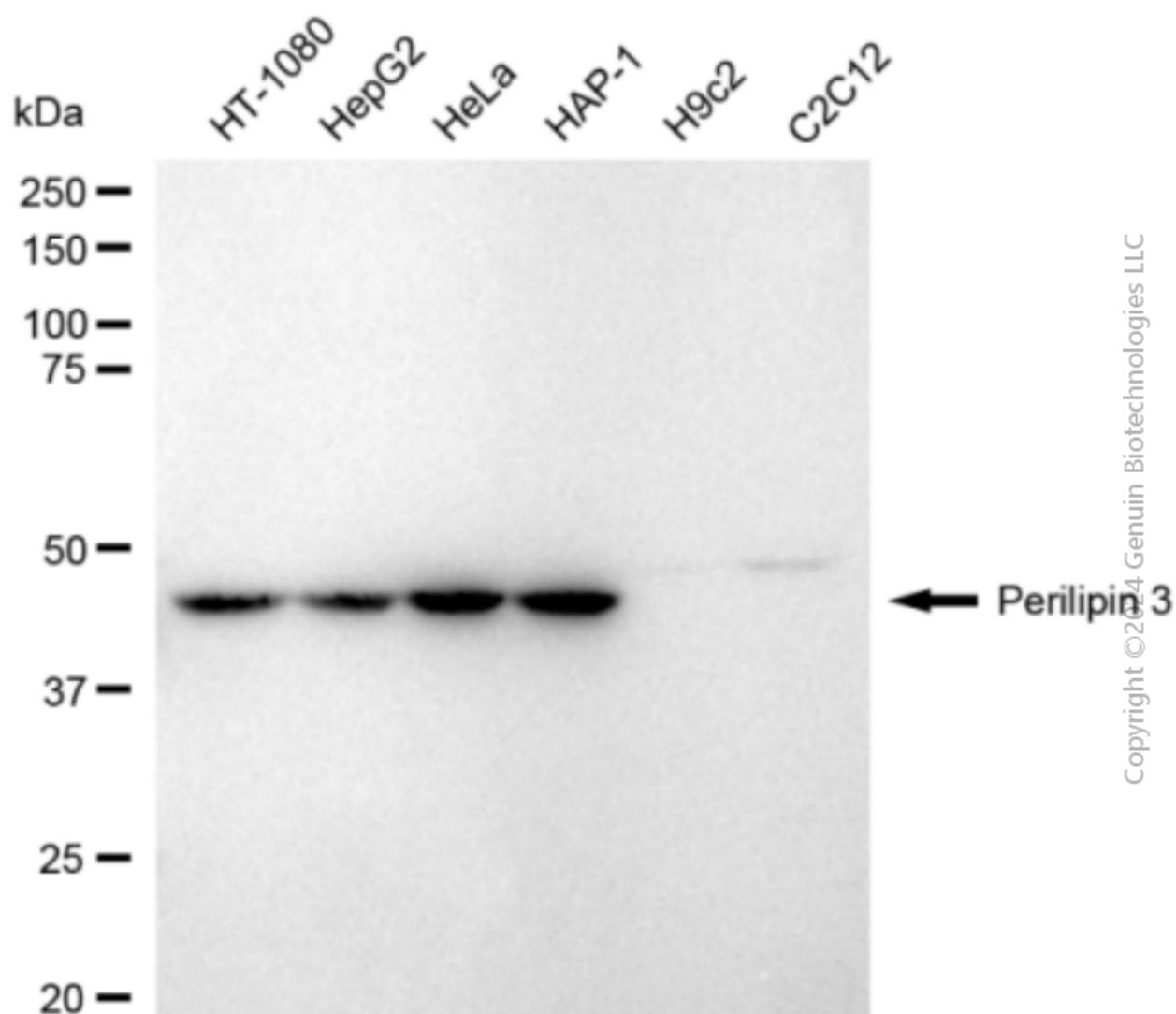
WWW.GENUINBIOTECH.COM

Note: This product is for research use only.

Validation Data



Immunocytochemical staining of HepG2 cells with anti-Perilipin 3 antibody(Cat#2864, 1:1,000) . Nuclei were stained blue with DAPI; Perilipin 3 was stained magenta with Alexa Fluor® 647. Images were taken using Leica stellaris 5. Protein abundance based on laser Intensity and smart gain: Medium. Scale bar, 20 μ m.



Western blotting analysis using anti-perilipin 3 antibody (Cat#2864). Total cell lysates (30 μ g) from various cell lines were loaded and separated by SDS-PAGE. The blot was incubated with anti-perilipin 3 antibody (Cat#2864, 1:5,000) and HRP-conjugated goat anti-mouse secondary antibody (Cat#101, 1:20,000) respectively. Image was developed using FeQ™ ECL Substrate Kit (Cat#226).