

Anti-Ubiquitin Specific Peptidase 2 Mouse Monoclonal Antibody



Catalog #: 2867

Aliases

USP2; Ubiquitin Specific Peptidase 2; UBP41; Ubiquitin-Specific-Processing Protease; Ubiquitin Carboxyl-Terminal Hydrolase; 41 KDa Ubiquitin-Specific Protease; Deubiquitinating Enzyme; Ubiquitin Thioesterase; Ubiquitin Specific Protease 12; Ubiquitin Specific Protease 2; Ubiquitin Specific Protease 9; EC 3.4.19.12; EC 3.1.2.15; USP9

Background

Gene Name: USP2

NCBI Gene Entry: [9099](#)

UniProt Entry: [O75604](#)

Application Information

Molecular Weight: Predicted, 68 kDa; observed, 68 kDa

Clonality: Mouse monoclonal antibody

Clone ID: 24GB2915

Species Reactivity: Human, mouse, rat

Applications Tested: Western blotting (WB), immunocytochemistry (IC)

Immunogen

Recombinant protein of human USP2

Isotype

Mouse IgG1 kappa

Storage Buffer

Supplied in PBS (pH 7.4) containing 50% glycerol, and 0.02% sodium azide.

Storage

Store at -20 °C for one year.

Recommended Dilutions

Western Blotting (WB): 1:2,500-1:5,000

Immunocytochemistry (IC): 1:100-1:1,000

Note: This product is for research use only.

SUPPORT

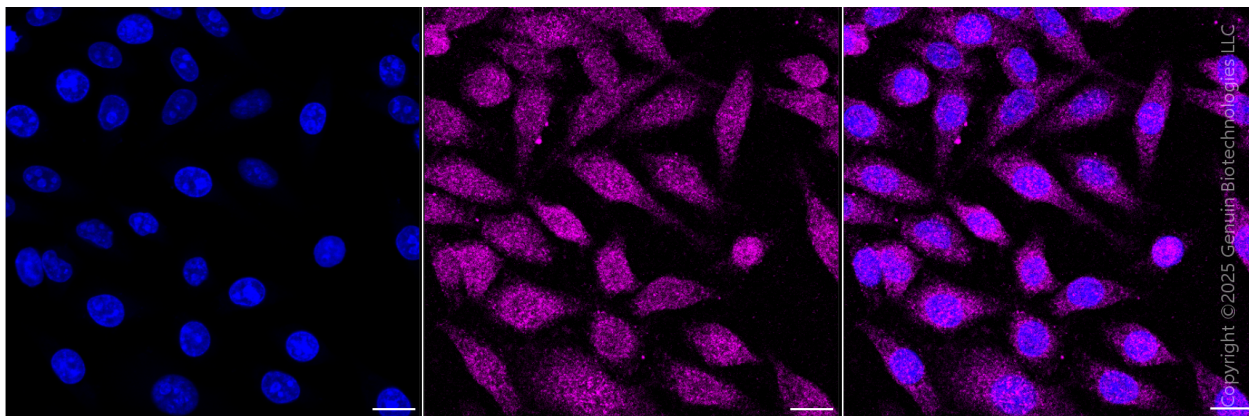
SUPPORT@GENUINBIOTECH.COM
TEL: +1-540-855-7041

ORDERS

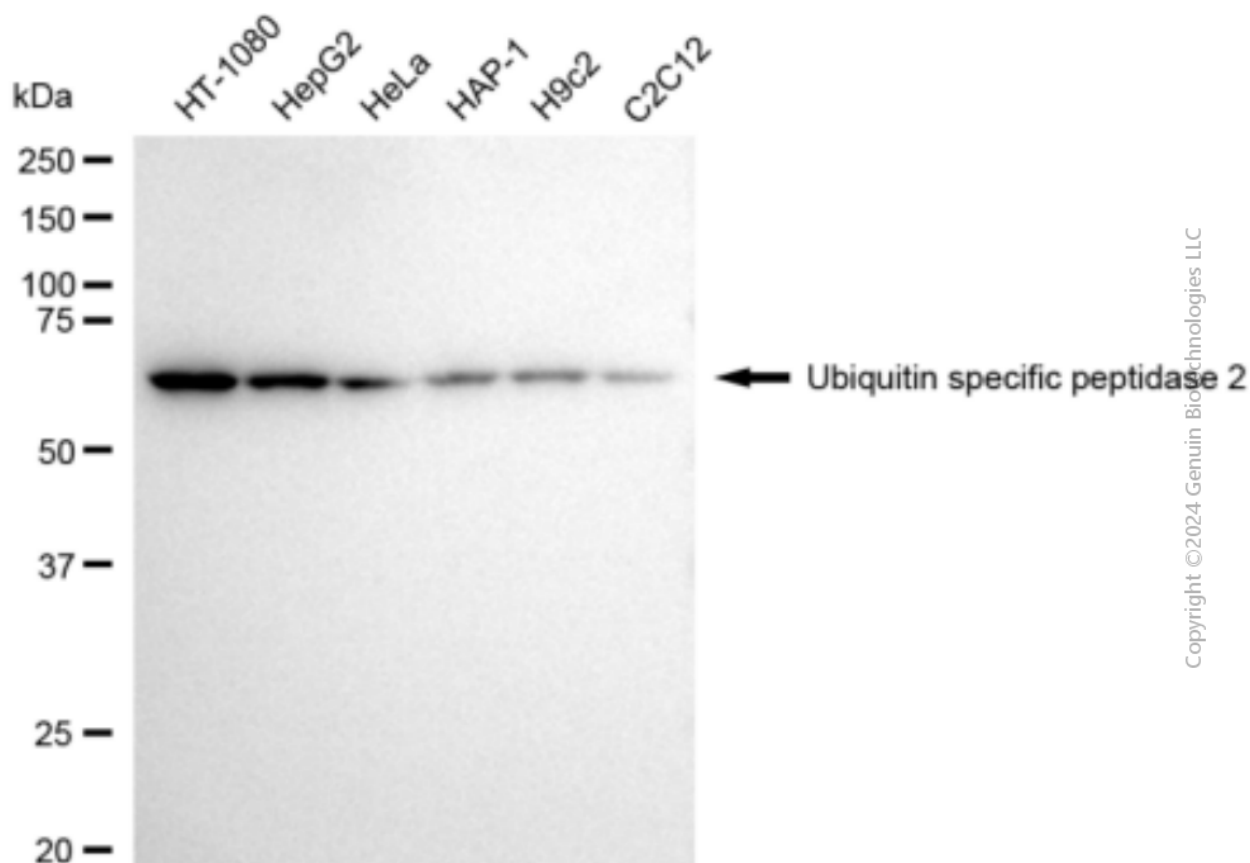
SALES@GENUINBIOTECH.COM
FAX: +1-540-855-7041

WWW.GENUINBIOTECH.COM

Validation Data



Immunocytochemical staining of HepG2 cells with anti-Ubiquitin specific peptidase 2 antibody (Cat#2867, 1:1,000). Nuclei were stained blue with DAPI; Ubiquitin specific peptidase 2 was stained magenta with Alexa Fluor® 647. Images were taken using Leica stellaris 5. Protein abundance based on laser Intensity and smart gain: Medium. Scale bar, 20 μ m.



Western blotting analysis using anti-Ubiquitin specific peptidase 2 antibody (Cat#2867). Total cell lysates (30 μ g) from various cell lines were loaded and separated by SDS-PAGE. The blot was incubated with anti-Ubiquitin specific peptidase 2 antibody (Cat#2867, 1:5,000) and HRP-

SUPPORT

SUPPORT@GENUINBIOTECH.COM
TEL: +1-540-855-7041

ORDERS

SALES@GENUINBIOTECH.COM
FAX: +1-540-855-7041

WWW.GENUINBIOTECH.COM

Anti-Ubiquitin Specific Peptidase 2 Mouse Monoclonal Antibody

PAGE 3

conjugated goat anti-mouse secondary antibody (Cat#101, 1:20,000) respectively. Image was developed using FeQ™ ECL Substrate Kit (Cat#226).

SUPPORT

SUPPORT@GENUINBIOTECH.COM
TEL: +1-540-855-7041

ORDERS

SALES@GENUINBIOTECH.COM
FAX: +1-540-855-7041

WWW.GENUINBIOTECH.COM