

Anti-Complement C3 Mouse Monoclonal Antibody



Catalog #: 2873

Aliases

C3; Complement C3; CPAMD1; ARMD9; C3a; C3b; C3 And PZP-Like Alpha-2-Macroglobulin Domain-Containing Protein 1; Complement Component C3a; Complement Component C3b; Complement Component 3; C3a Anaphylatoxin; Prepro-C3; Epididymis Secretory Sperm Binding Protein Li 62p; Acylation-Stimulating Protein Cleavage Product; HEL-S-62p; AHUS5; ASP

Background

Gene Name: C3

NCBI Gene Entry: [718](#)

UniProt Entry: [P01024](#)

Application Information

Molecular Weight: Predicted, 187 kDa; observed, 135 kDa

Clonality: Mouse monoclonal antibody

Clone ID: 24GB2945

Species Reactivity: Human, rat

Applications Tested: Western blotting (WB), flow cytometry (FCM), immunocytochemistry (IC)

Immunogen

A synthesized peptide derived from human Complement C3

Isotype

Mouse IgG1

Storage Buffer

Supplied in PBS (pH 7.4) containing 50% glycerol, and 0.02% sodium azide.

Storage

Store at -20 °C for one year.

Recommended Dilutions

Western Blotting (WB): 1:2,500-1:5,000

Flow Cytometry (FCM): 1:2,000

Immunocytochemistry (IC): 1:100-1:1,000

SUPPORT

SUPPORT@GENUINBIOTECH.COM
TEL: +1-540-855-7041

ORDERS

SALES@GENUINBIOTECH.COM
FAX: +1-540-855-7041

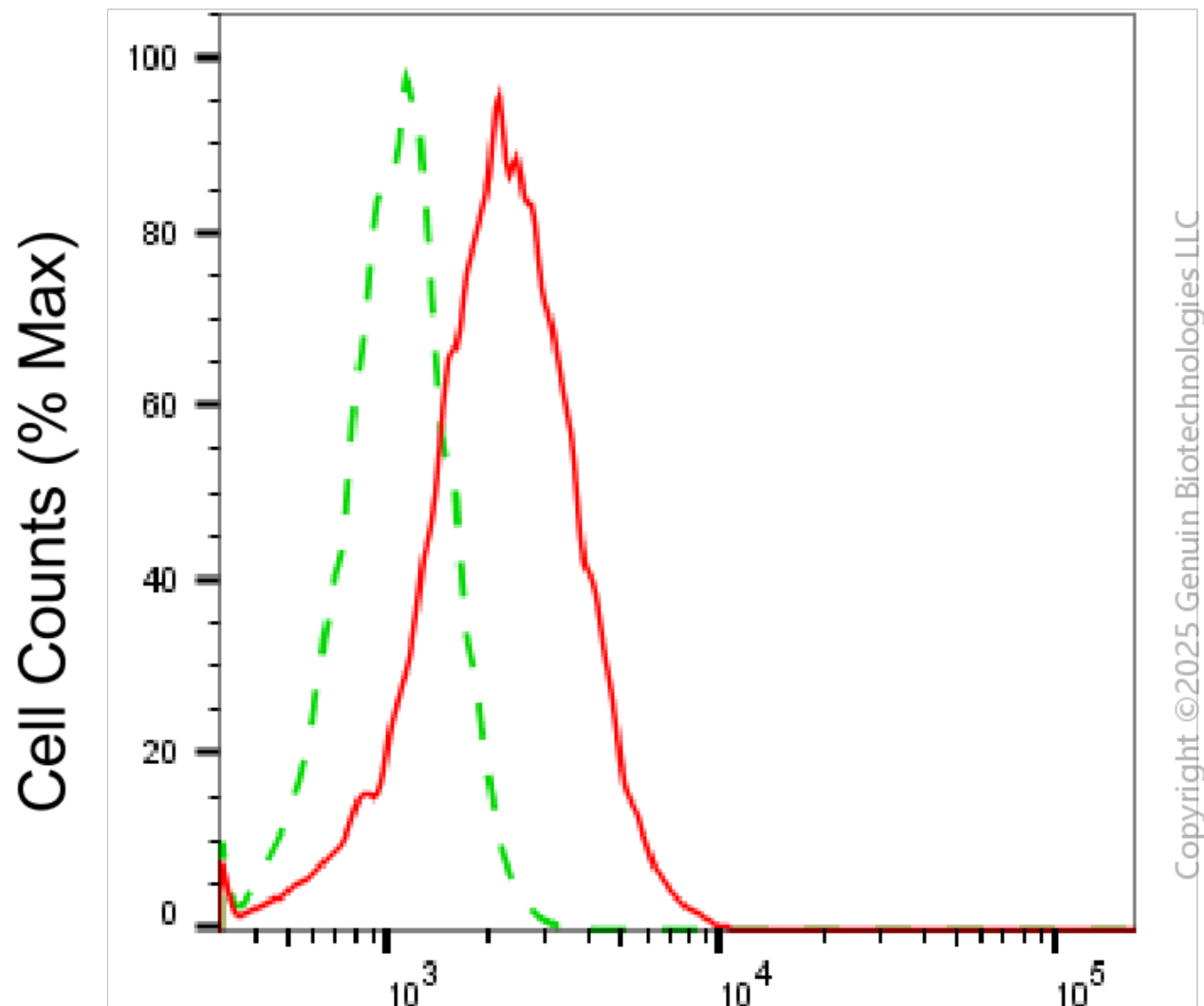
WWW.GENUINBIOTECH.COM

Anti-Complement C3 Mouse Monoclonal Antibody

PAGE 2

Note: This product is for research use only.

Validation Data



Complement C3-Alexa Fluor® 647

Flow cytometric analysis of Complement C3 expression in HepG2 cells using anti-Complement C3 antibody (Cat#2873, 1:2,000). Green, isotype control; red, Complement C3 .

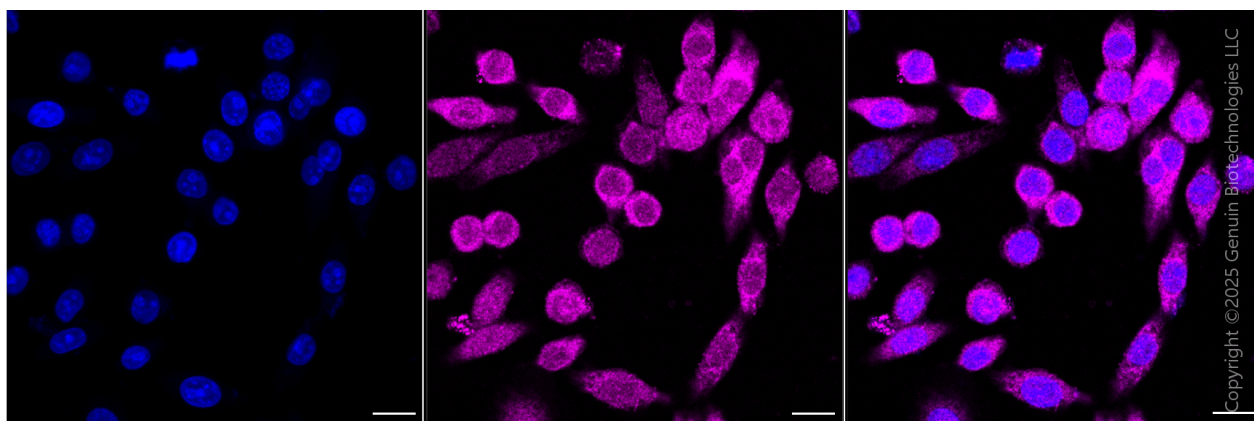
SUPPORT

SUPPORT@GENUINBIOTECH.COM
TEL: +1-540-855-7041

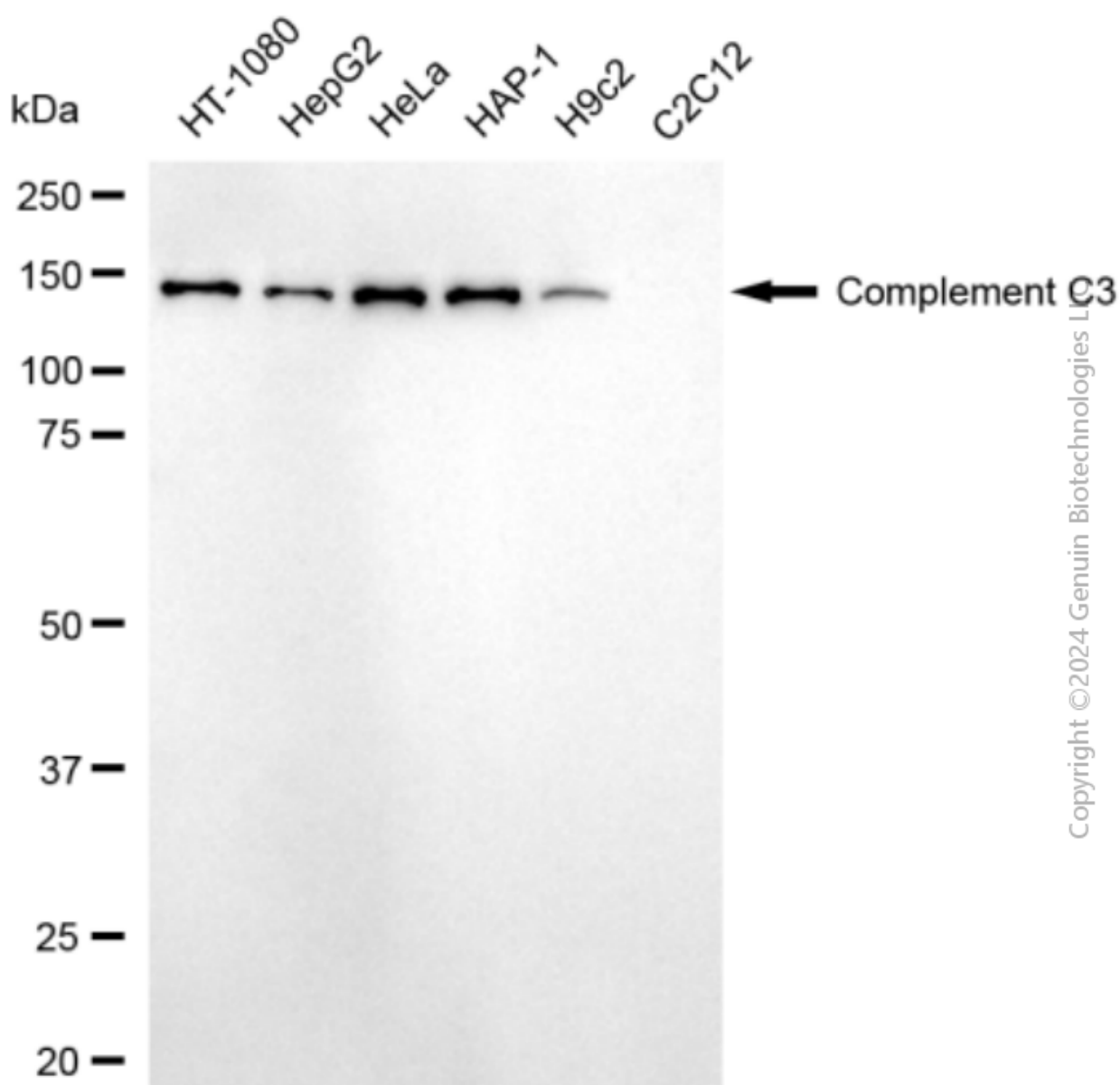
ORDERS

SALES@GENUINBIOTECH.COM
FAX: +1-540-855-7041

WWW.GENUINBIOTECH.COM



Immunocytochemical staining of HepG2 cells with anti-Complement C3 antibody(Cat#2873, 1:1,000) . Nuclei were stained blue with DAPI; Complement C3 was stained magenta with Alexa Fluor® 647. Images were taken using Leica stellaris 5. Protein abundance based on laser Intensity and smart gain: Medium. Scale bar, 20 μ m.



Copyright ©2024 Genuin Biotechnologies LLC

Western blotting analysis using anti-complement C3 antibody (Cat#2873). Total cell lysates (30 µg) from various cell lines were loaded and separated by SDS-PAGE. The blot was incubated with anti-complement C3 antibody (Cat#2873, 1:5,000) and HRP-conjugated goat anti-mouse secondary antibody (Cat#101, 1:20,000) respectively. Image was developed using FeQ™ ECL Substrate Kit (Cat#226).