

Catalog #: 2878

Aliases

GCG; Glucagon; GLP-1; GLP1; GLP2; GRPP; Glicentin-Related Polypeptide; Glucagon-Like Peptide 1; Glucagon-Like Peptide 2; Preproglucagon; Pro-Glucagon

Background

Gene Name: GCG

NCBI Gene Entry: [2641](#)

UniProt Entry: [P01275](#)

Application Information

Molecular Weight: Predicted, 21 kDa; observed, 25 kDa

Clonality: Mouse monoclonal antibody

Clone ID: 24GB2965

Species Reactivity: Human

Applications Tested: Western blotting (WB), immunocytochemistry (IC), flow cytometry (FCM)

Immunogen

A synthesized peptide derived from human Glucagon

Isotype

Mouse IgG1 kappa

Storage Buffer

Supplied in PBS (pH 7.4) containing 50% glycerol, and 0.02% sodium azide.

Storage

Store at -20 °C for one year.

Recommended Dilutions

Western Blotting (WB): 1:2,500-1:5,000

Immunocytochemistry (IC): 1:100-1:1,000

Flow Cytometry (FCM): 1:2,000

Note: This product is for research use only.

Validation Data

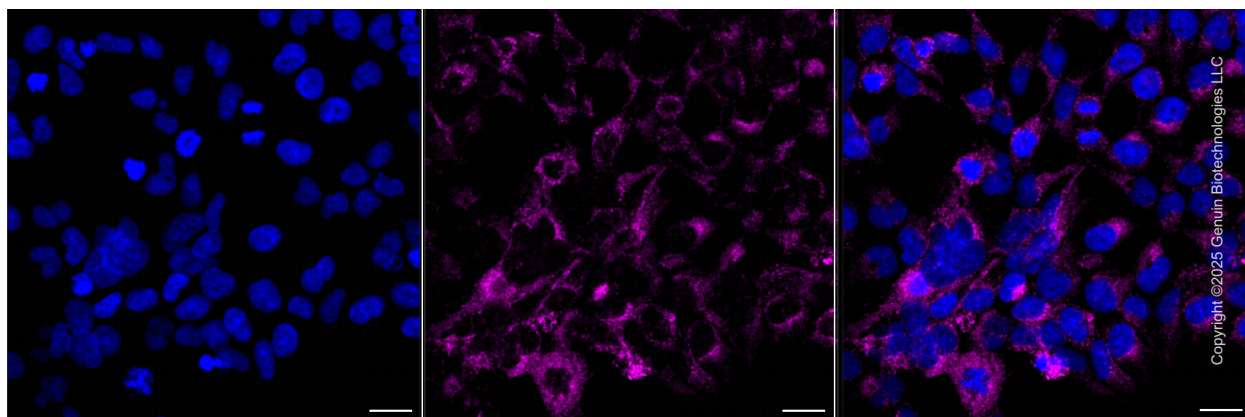
SUPPORT

SUPPORT@GENUINBIOTECH.COM
TEL: +1-540-855-7041

ORDERS

SALES@GENUINBIOTECH.COM
FAX: +1-540-855-7041

WWW.GENUINBIOTECH.COM



Immunocytochemical staining of HeLa cells with anti-Glucagon protein antibody (Cat#2878, 1:1,000) . Nuclei were stained blue with DAPI; Glucagon was stained magenta with Alexa Fluor® 647. Images were taken using Leica stellaris 5. Protein abundance based on laser Intensity and smart gain: Medium. Scale bar, 20 μ m.

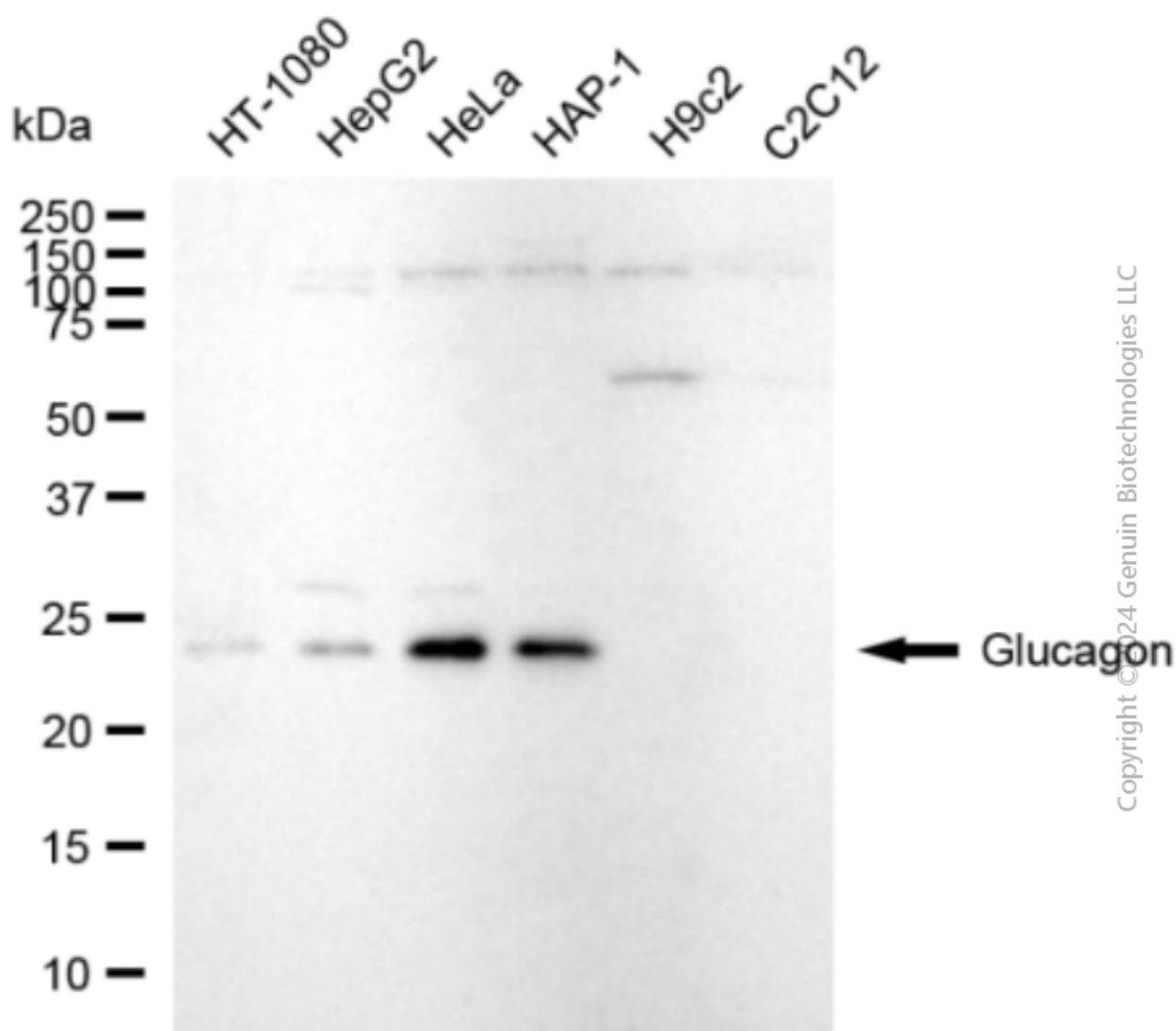
SUPPORT

SUPPORT@GENUINBIOTECH.COM
TEL: +1-540-855-7041

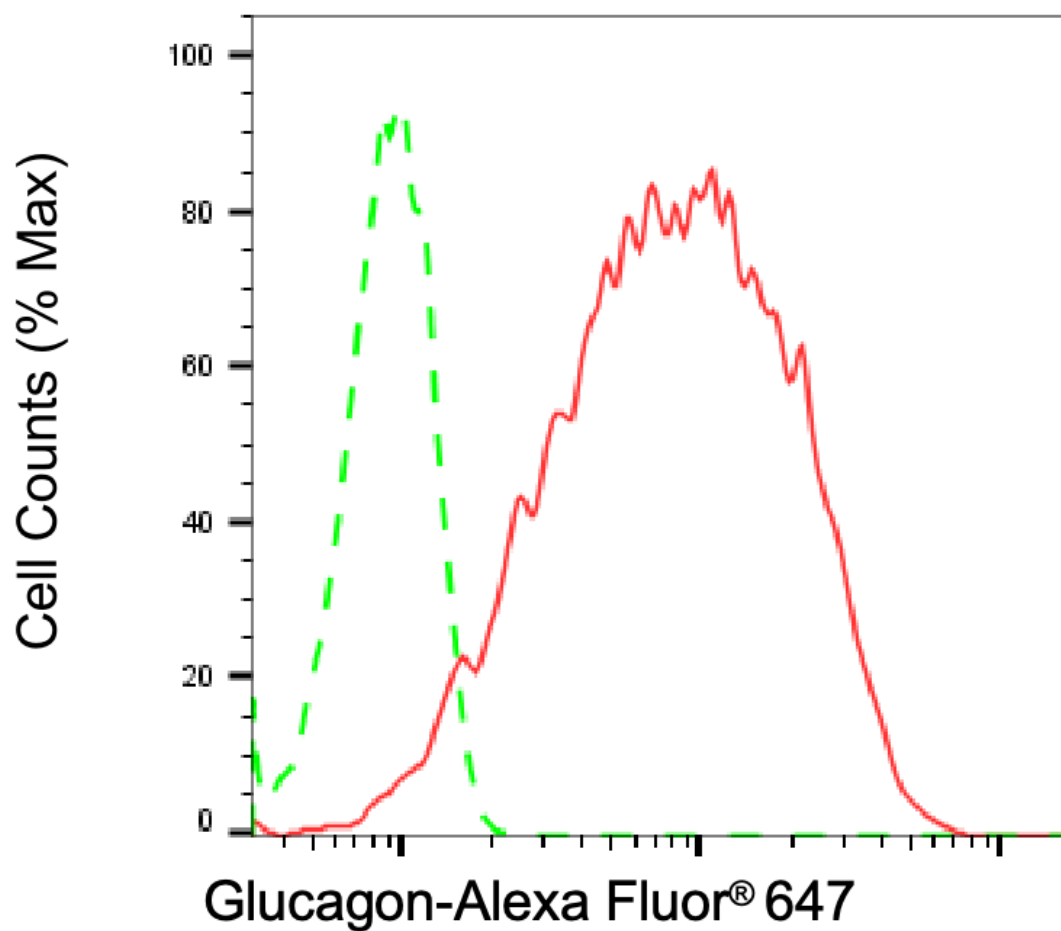
ORDERS

SALES@GENUINBIOTECH.COM
FAX: +1-540-855-7041

WWW.GENUINBIOTECH.COM



Western blotting analysis using anti-Glucagon antibody (Cat#2878). Total cell lysates (30 μ g) from various cell lines were loaded and separated by SDS-PAGE. The blot was incubated with anti-Glucagon antibody (Cat#2878, 1:5,000) and HRP-conjugated goat anti-mouse secondary antibody (Cat#101, 1:20,000) respectively. Image was developed using FeQ™ ECL Substrate Kit (Cat#226).



Copyright ©2025 Genuin Biotechnologies LLC

Flow cytometric analysis of Glucagon expression in HeLa cells using anti-Glucagon antibody (Cat#2878, 1:2,000). Green, isotype control; red, Glucagon.