

Catalog #: 2880

Aliases

LTF; Lactotransferrin; HLF2; Growth-Inhibiting Protein 12; Talalactoferrin; GIG12; LF; Epididymis Luminal Protein 110; Neutrophil Lactoferrin; Lactoferricin; Lactoferroxin; Lactoferrin; EC 3.4.21.-; Kaliocin-1; EC 3.4.21; HEL110

Background

Gene Name: LTF

NCBI Gene Entry: [4057](#)

UniProt Entry: [P02788](#)

Application Information

Molecular Weight: Predicted, 78 kDa; observed, 69 kDa

Clonality: Mouse monoclonal antibody

Clone ID: 24GB2975

Species Reactivity: Human, mouse, rat

Applications Tested: Western blotting (WB), immunocytochemistry (IC)

Immunogen

Recombinant protein of human Lactoferrin

Isotype

Mouse IgG1 kappa

Storage Buffer

Supplied in PBS (pH 7.4) containing 50% glycerol, and 0.02% sodium azide.

Storage

Store at -20 °C for one year.

Recommended Dilutions

Western Blotting (WB): 1:2,500-1:5,000

Immunocytochemistry (IC): 1:100-1:1,000

Note: This product is for research use only.

Validation Data

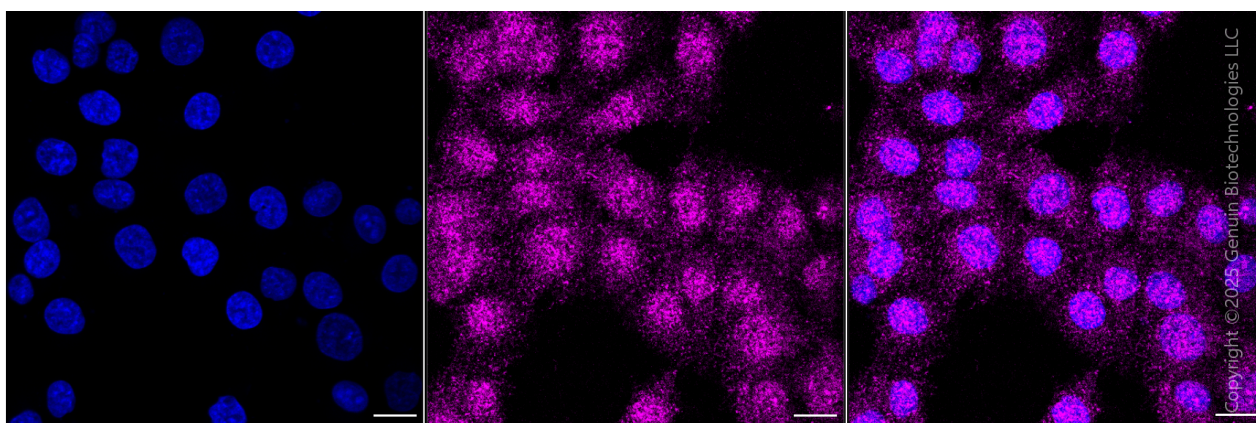
SUPPORT

SUPPORT@GENUINBIOTECH.COM
TEL: +1-540-855-7041

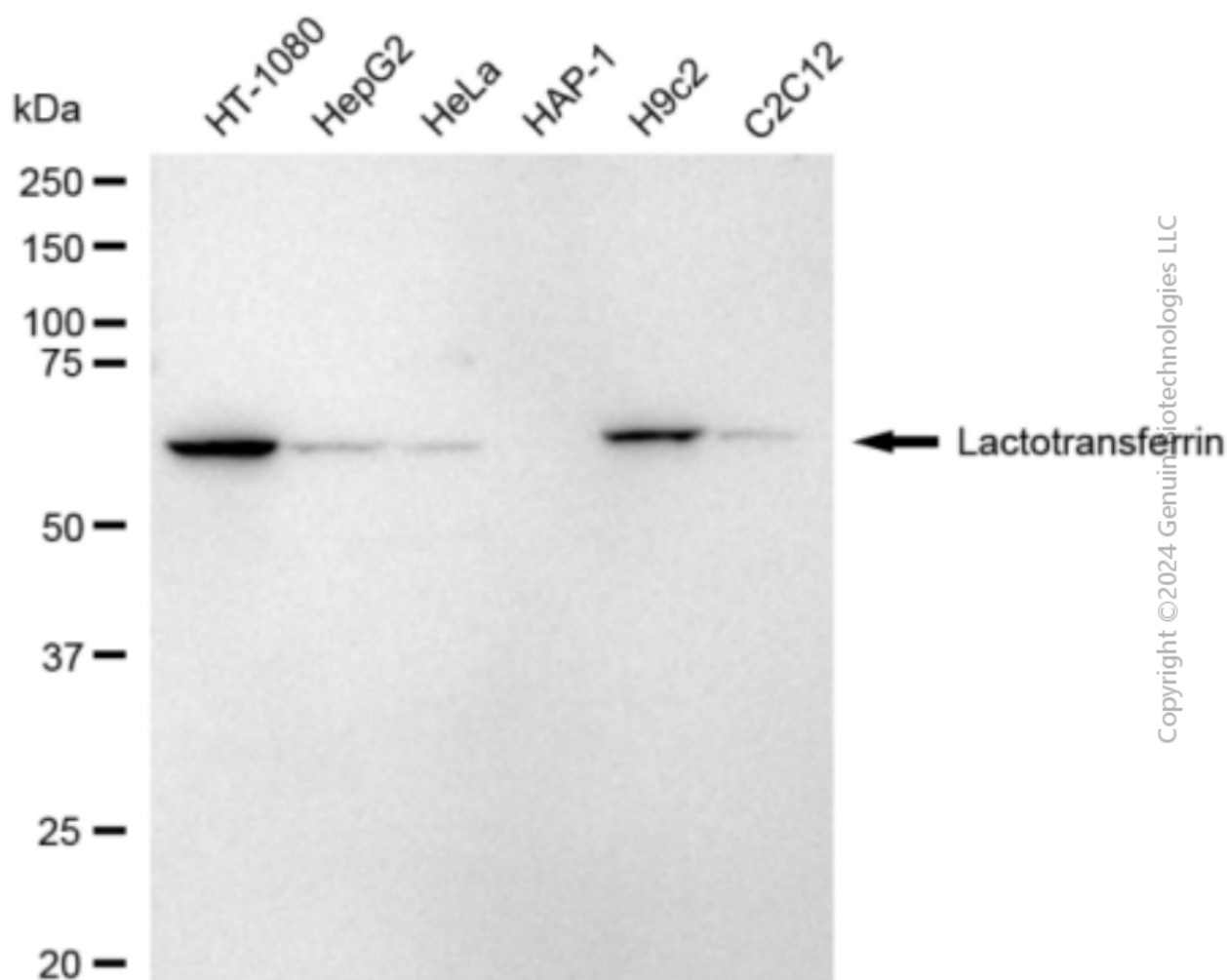
ORDERS

SALES@GENUINBIOTECH.COM
FAX: +1-540-855-7041

WWW.GENUINBIOTECH.COM



Immunocytochemical staining of HepG2 cells with anti-Lactotransferrin antibody(Cat#2880, 1:1,000) . Nuclei were stained blue with DAPI; Lactotransferrin was stained magenta with Alexa Fluor® 647. Images were taken using Leica stellaris 5. Protein abundance based on laser Intensity and smart gain:Low. Scale bar, 20 μ m.

**SUPPORT**

SUPPORT@GENUINBIOTECH.COM
TEL: +1-540-855-7041

ORDERS

SALES@GENUINBIOTECH.COM
FAX: +1-540-855-7041

WWW.GENUINBIOTECH.COM

Western blotting analysis using anti-Lactotransferrin antibody (Cat#2880). Total cell lysates (30 µg) from various cell lines were loaded and separated by SDS-PAGE. The blot was incubated with anti-Lactotransferrin antibody (Cat#2880, 1:5,000) and HRP-conjugated goat anti-mouse secondary antibody (Cat#101, 1:20,000) respectively. Image was developed using FeQ™ ECL Substrate Kit (Cat#226).