

Catalog #: 2881

Aliases

HLA-B; Major Histocompatibility Complex, Class I, B; HLA Class I Histocompatibility Antigen, B Alpha Chain; HLAB; AS; MHC Class I Antigen HLA-B Alpha Chain; MHC Class I Antigen HLA-B Heavy Chain; MHC HLA-B Transmembrane Glycoprotein; MHC HLA-B Cell Surface Glycoprotein; Leukocyte Antigen Class I-B; HLA Class I Antigen HLA-B; MHC Class I Antigen SHCHA; Human Leukocyte Antigen B; Ankylosing Spondylitis; MHC Class I Molecule; MHC Class 1 Antigen; B-4901

Background

Gene Name: HLA-B

NCBI Gene Entry: [3106](#)

UniProt Entry: [P01889](#)

Application Information

Molecular Weight: Predicted, 40 kDa; observed, 38 kDa

Clonality: Mouse monoclonal antibody

Clone ID: 24GB2980

Species Reactivity: Human

Applications Tested: Western blotting (WB), immunocytochemistry (IC)

Immunogen

A synthesized peptide derived from human HLA-B

Isotype

Mouse IgM

Storage Buffer

Supplied in PBS (pH 7.4) containing 50% glycerol, and 0.02% sodium azide.

Storage

Store at -20 °C for one year.

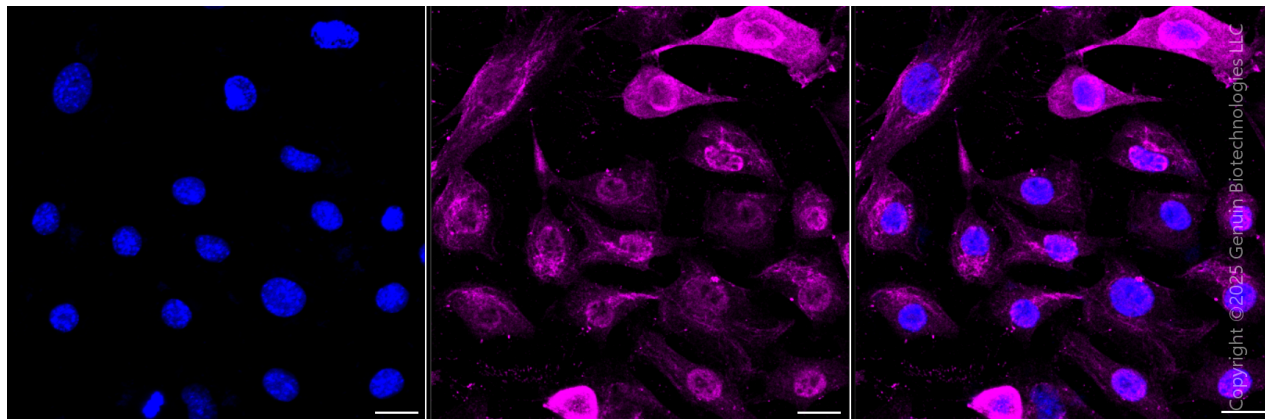
Recommended Dilutions

Western Blotting (WB): 1:2,500-1:5,000

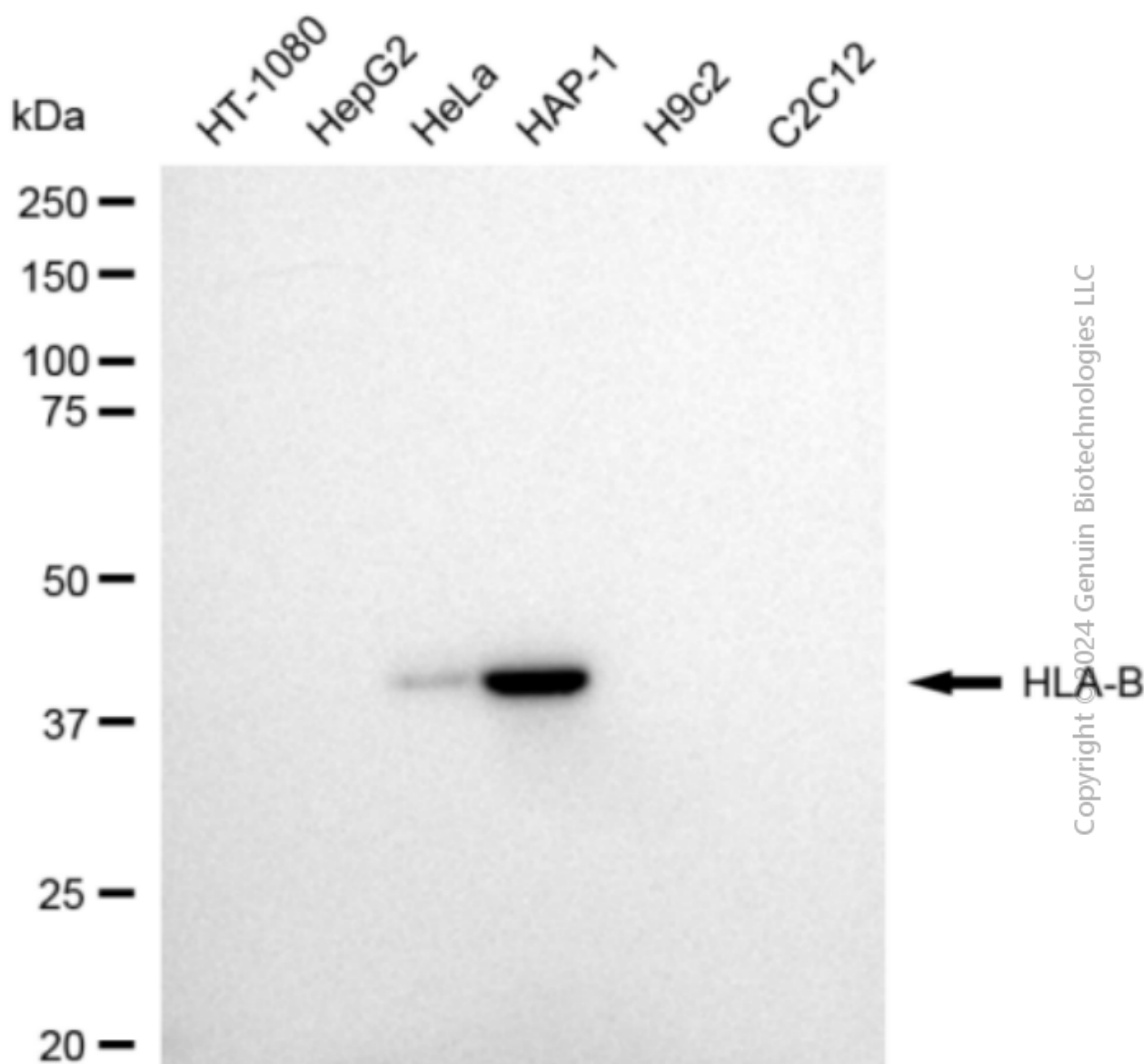
Immunocytochemistry (IC): 1:100-1:1,000

Note: This product is for research use only.

Validation Data



Immunocytochemical staining of HAP-1 cells with anti-HLA-B antibody (Cat#2881, 1:1,000) . Nuclei were stained blue with DAPI; HLA-B was stained magenta with Alexa Fluor® 647. Images were taken using Leica stellaris 5. Protein abundance based on laser Intensity and Smart Gain□Medium. Scale bar, 20 µm.



Western blotting analysis using anti-HLA-B antibody (Cat#2881). Total cell lysates (30 µg) from various cell lines were loaded and separated by SDS-PAGE. The blot was incubated with anti-HLA-B antibody (Cat#2881, 1:5,000) and HRP-conjugated goat anti-mouse secondary antibody (Cat#101, 1:20,000) respectively. Image was developed using FeQ™ ECL Substrate Kit (Cat#226).

SUPPORT

SUPPORT@GENUINBIOTECH.COM
TEL: +1-540-855-7041

ORDERS

SALES@GENUINBIOTECH.COM
FAX: +1-540-855-7041

WWW.GENUINBIOTECH.COM