

# Anti-Glycerol Kinase Recombinant Rabbit Monoclonal Antibody



**Catalog #: 2885**

## Aliases

GK; Glycerol Kinase; GK1; GKD; ATP:Glycerol 3-Phosphotransferase; Glycerokinase; EC 2.7.1.30

## Background

Gene Name: GK

NCBI Gene Entry: [2710](#)

UniProt Entry: [P32189](#)

## Application Information

Molecular Weight: Predicted, 61 kDa; observed, 50 kDa

Clonality: Rabbit monoclonal antibody

Clone ID: 24GB3000

Species Reactivity: Human, mouse, rat

Applications Tested: Western blotting (WB), flow cytometry (FCM), immunocytochemistry (IC)

## Immunogen

A synthesized peptide derived from human Glycerol kinase

## Isotype

Rabbit IgG

## Storage Buffer

Supplied in PBS (pH 7.4) containing 50% glycerol, and 0.02% sodium azide.

## Storage

Store at -20 °C for one year.

## Recommended Dilutions

Western Blotting (WB): 1:1,000-1:5,000

Immunocytochemistry (IC): 1:100-1:1,000

Flow Cytometry (FCM): 1:2,000

**Note:** This product is for research use only.

## Validation Data

---

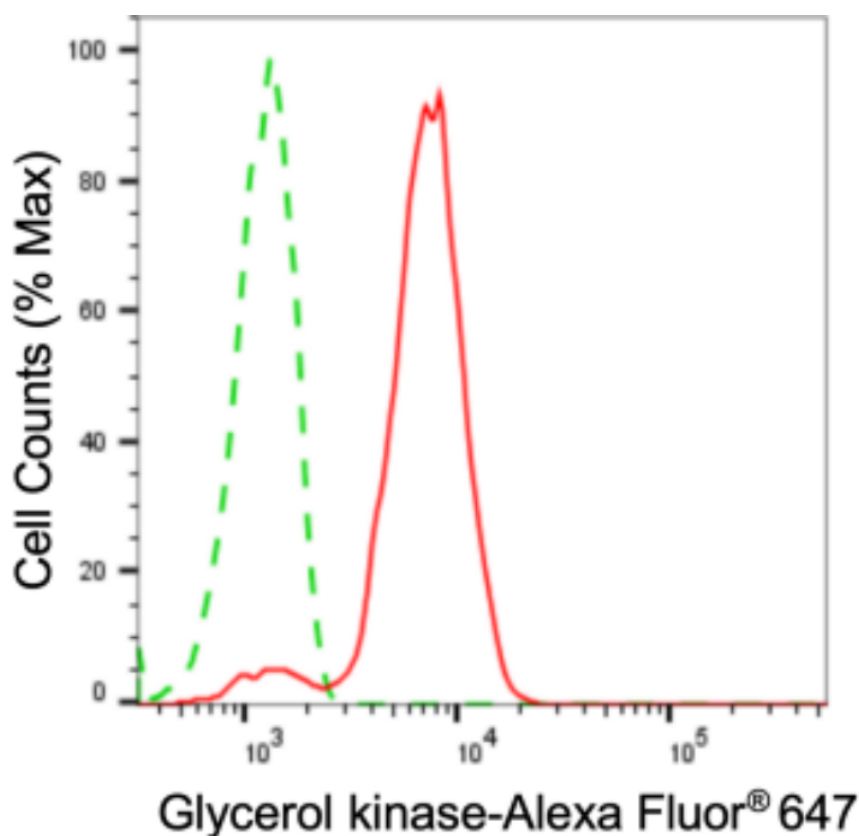
### SUPPORT

SUPPORT@GENUINBIOTECH.COM  
TEL: +1-540-855-7041

### ORDERS

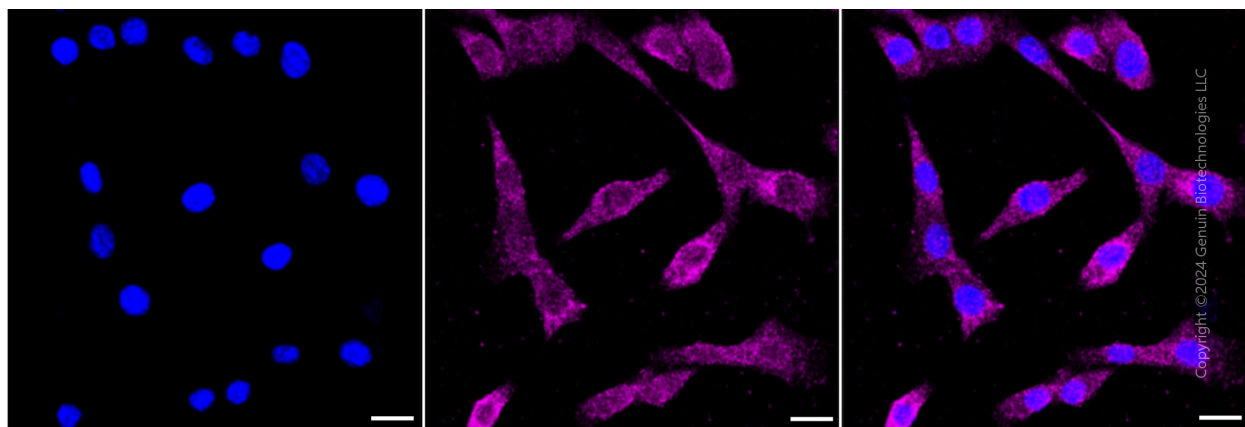
SALES@GENUINBIOTECH.COM  
FAX: +1-540-855-7041

[WWW.GENUINBIOTECH.COM](http://WWW.GENUINBIOTECH.COM)

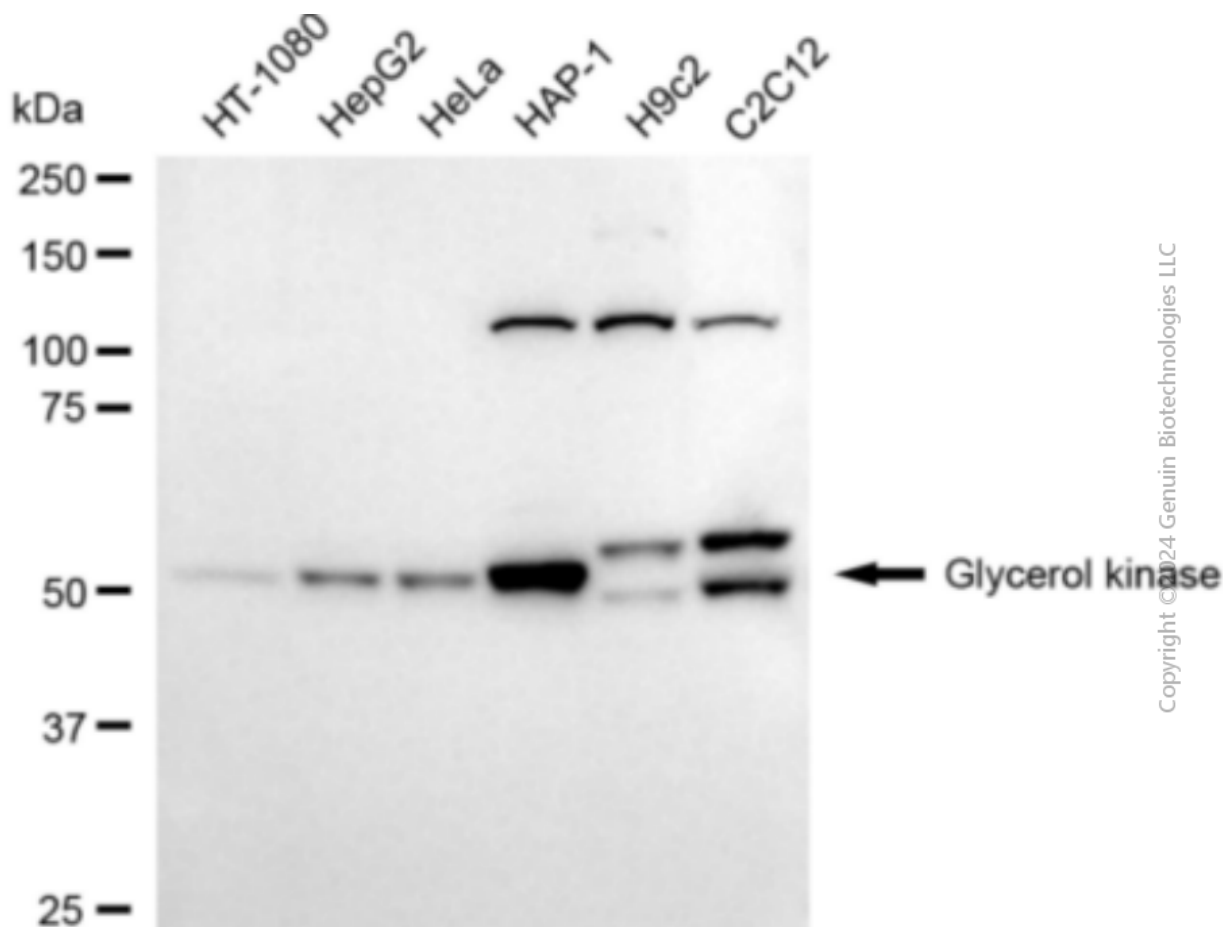


Copyright ©2024 Genuin Biotechnologies LLC

Flow cytometric analysis of Glycerol kinase expression in C2C12 cells using anti-Glycerol kinase antibody (Cat#2885, 1:2,000). Green, isotype control; red, Glycerol kinase.



Immunocytochemical staining of C2C12 cells with anti-Glycerol kinase antibody (Cat#2885, 1:1,000). Nuclei were stained blue with DAPI; Glycerol kinase was stained magenta with Alexa Fluor® 647. Images were taken using leica stellaris 5. Protein abundance based on laser intensity and smart gain: Medium. Scale bar: 20  $\mu$ m.



Western blotting analysis using anti-glycerol kinase antibody (Cat#2885). Total cell lysates (30  $\mu$ g) from various cell lines were loaded and separated by SDS-PAGE. The blot was incubated with anti-glycerol kinase antibody (Cat#2885, 1:5,000) and HRP-conjugated goat anti-rabbit secondary antibody (Cat#201, 1:20,000) respectively. Image was developed using FeQ™ ECL Substrate Kit (Cat#226).