

# Anti-TRNA Methyltransferase 2 Homolog Recombinant Rabbit Monoclonal Antibody



**Catalog #: 2887**

## Aliases

TRMT2A; TRNA Methyltransferase 2 Homolog ; HTF9; TRNA (Uracil-5-)-Methyltransferase Homolog A; MRNA (Uracil-5-)-Methyltransferase TRMT2A;  
TRNA Methyltransferase 2 Homolog A (S. Cerevisiae); TRM2 TRNA Methyltransferase 2 Homolog A; HpaII Tiny Fragments Locus 9c Protein; HpaII Tiny Fragments Locus 9C; EC 2.1.1.35; EC 2.1.1.-

## Background

Gene Name: TRMT2A

NCBI Gene Entry: [27037](#)

UniProt Entry: [Q8IZ69](#)

## Application Information

Molecular Weight: Predicted, 69 kDa; observed, 69 kDa

Clonality: Rabbit monoclonal antibody

Clone ID: 24GB3010

Species Reactivity: Human, mouse

Applications Tested: Western blotting (WB), flow cytometry (FCM), immunocytochemistry (IC)

## Immunogen

A synthesized peptide derived from human HTF9C

## Isotype

Rabbit IgG

## Storage Buffer

Supplied in PBS (pH 7.4) containing 50% glycerol, and 0.02% sodium azide.

## Storage

Store at -20 °C for one year.

## Recommended Dilutions

Western Blotting (WB): 1:1,000-1:5,000

Flow Cytometry (FCM): 1:2,000

Immunocytochemistry (IC): 1:100-1:1,000

---

### SUPPORT

SUPPORT@GENUINBIOTECH.COM  
TEL: +1-540-855-7041

### ORDERS

SALES@GENUINBIOTECH.COM  
FAX: +1-540-855-7041

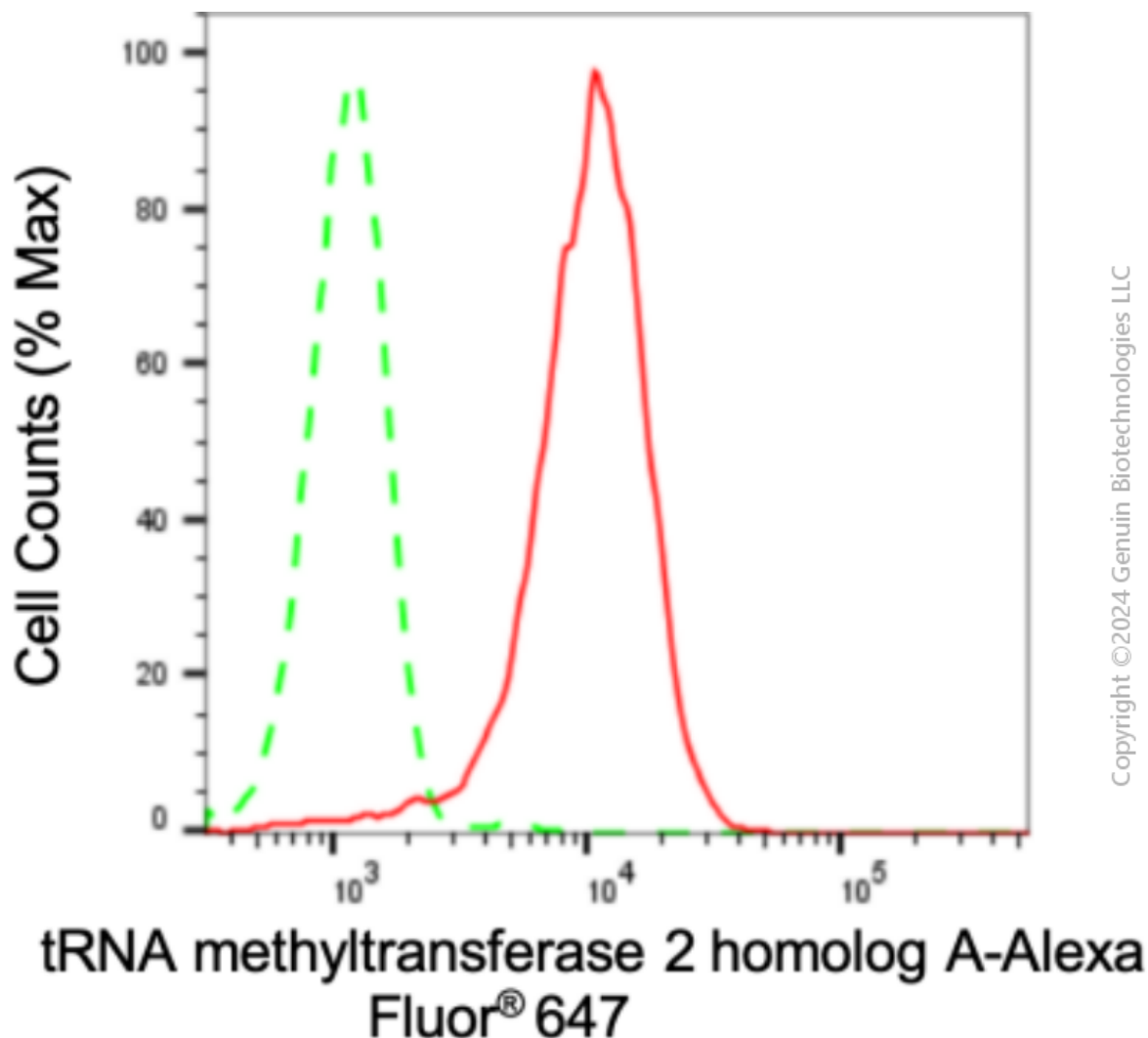
[WWW.GENUINBIOTECH.COM](http://WWW.GENUINBIOTECH.COM)

# Anti-tRNA Methyltransferase 2 Homolog Recombinant Rabbit Monoclonal Antibody

PAGE 2

**Note:** This product is for research use only.

## Validation Data



Copyright ©2024 Genuin Biotechnologies LLC

Flow cytometric analysis of tRNA methyltransferase 2 homolog A expression in HepG2 cells using anti-tRNA methyltransferase 2 homolog A antibody (Cat#2887, 1:2,000). Green, isotype control; red, tRNA methyltransferase 2 homolog A.

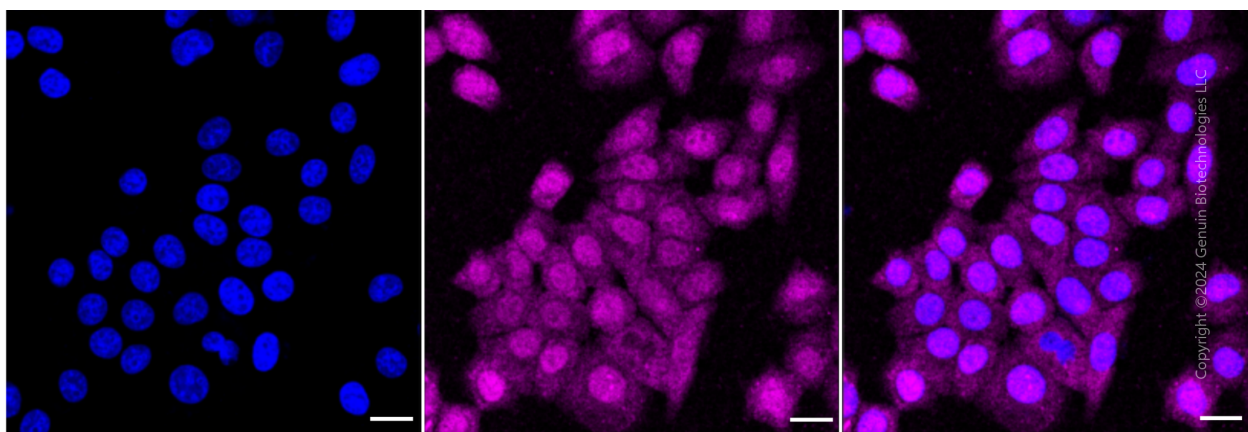
### SUPPORT

SUPPORT@GENUINBIOTECH.COM  
TEL: +1-540-855-7041

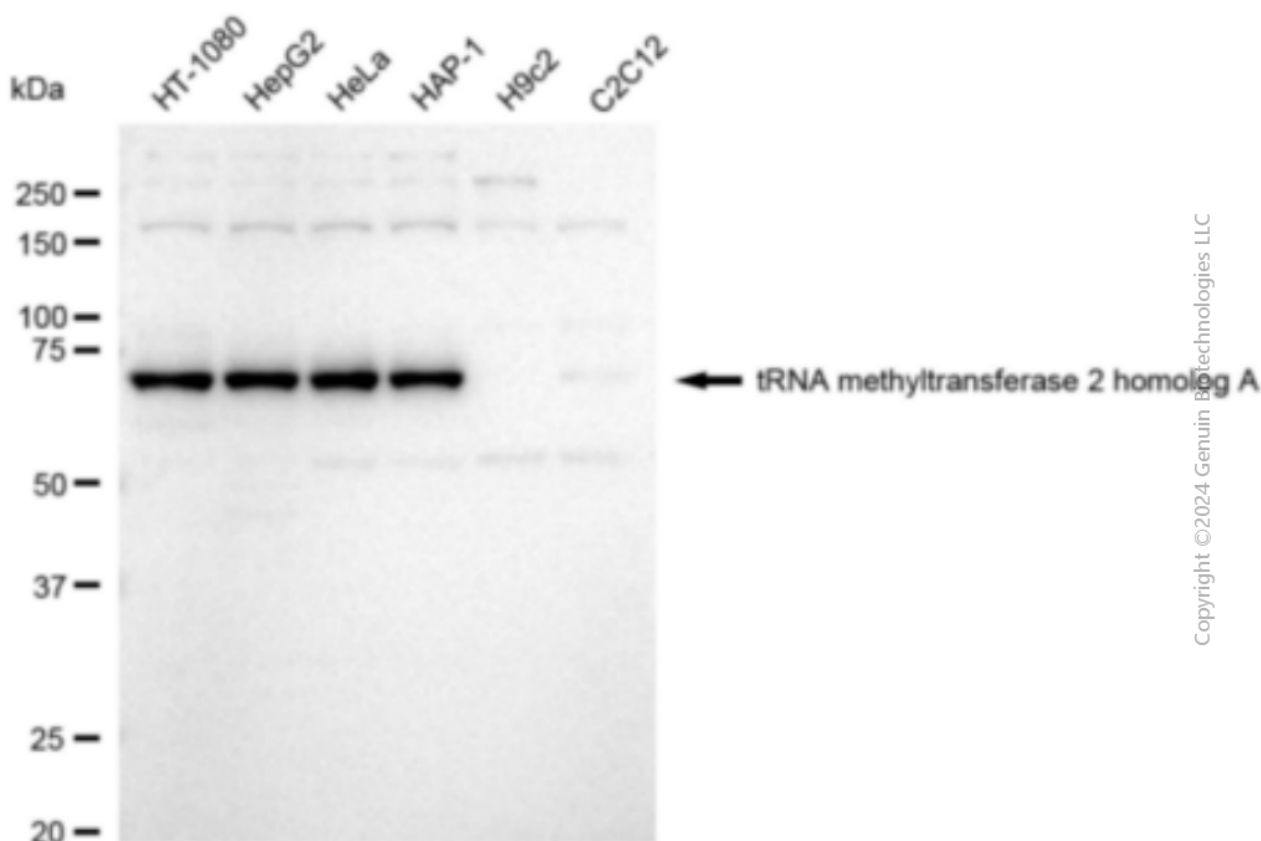
### ORDERS

SALES@GENUINBIOTECH.COM  
FAX: +1-540-855-7041

WWW.GENUINBIOTECH.COM



Immunocytochemical staining of HepG2 cells with anti-tRNA methyltransferase 2 homolog A antibody (Cat#2887, 1:1,000). Nuclei were stained blue with DAPI; tRNA methyltransferase 2 homolog A was stained magenta with Alexa Fluor® 647. Images were taken using Leica stellaris 5. Protein abundance based on laser Intensity and smart gain: Meidum. Scale bar: 20  $\mu$ m.



Western blotting analysis using anti-tRNA methyltransferase 2 homolog A antibody (Cat#2887). Total cell lysates (30  $\mu$ g) from various cell lines were loaded and separated by SDS-PAGE. The blot was incubated with anti-tRNA methyltransferase 2 homolog A antibody (Cat#2887, 1:5,000) and HRP-conjugated goat anti-rabbit secondary antibody (Cat#201, 1:20,000) respectively. Image was developed using FeQ™ ECL Substrate Kit (Cat#226).