

Anti-Intercellular Adhesion Molecule 3 Recombinant Rabbit Monoclonal Antibody



Catalog #: 2892

Aliases

ICAM3; Intercellular Adhesion Molecule 3; ICAM-R; CDW50; CD50; ICAM-3; CD50 Antigen; CDw50

Background

Gene Name: ICAM3

NCBI Gene Entry: [3385](#)

UniProt Entry: [P32942](#)

Application Information

Molecular Weight: Predicted, 60 kDa; observed, 145 kDa

Clonality: Rabbit monoclonal antibody

Clone ID: 24GB3035

Species Reactivity: Human

Applications Tested: Western blotting (WB), immunocytochemistry (IC)

Immunogen

A synthesized peptide derived from human ICAM3 / CD50

Isotype

Rabbit IgG

Storage Buffer

Supplied in PBS (pH 7.4) containing 50% glycerol, and 0.02% sodium azide.

Storage

Store at -20 °C for one year.

Recommended Dilutions

Western Blotting (WB): 1:1,000-1:5,000

Immunocytochemistry (IC): 1:100-1:1,000

Note: This product is for research use only.

Validation Data

SUPPORT

SUPPORT@GENUINBIOTECH.COM
TEL: +1-540-855-7041

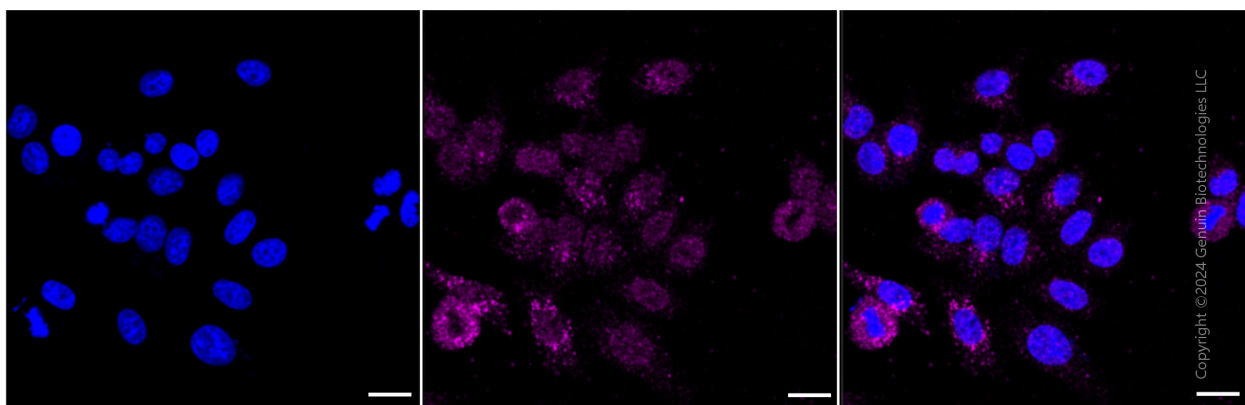
ORDERS

SALES@GENUINBIOTECH.COM
FAX: +1-540-855-7041

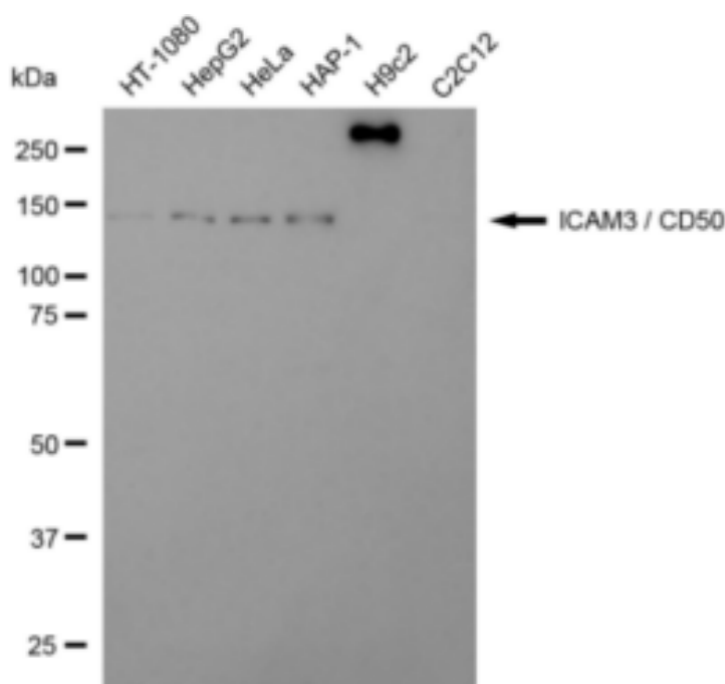
WWW.GENUINBIOTECH.COM

Anti-Intercellular Adhesion Molecule 3 Recombinant Rabbit Monoclonal Antibody

PAGE 2



Immunocytochemical staining of HepG2 cells with anti-ICAM3 / CD50 antibody (Cat#2892, 1:1,000). Nuclei were stained blue with DAPI; ICAM3 / CD50 was stained magenta with Alexa Fluor 647. Images were taken using Leica stellaris 5. Protein abundance based on laser Intensity and smart gain: Low. Scale bar: 20 μ m.



Western blotting analysis using anti-ICAM3 / CD50 antibody (Cat#2892). Total cell lysates (30 μ g) from various cell lines were loaded and separated by SDS-PAGE. The blot was incubated with anti-ICAM3 / CD50 antibody (Cat#2892, 1:5,000) and HRP-conjugated goat anti-rabbit secondary antibody (Cat#201, 1:20,000) respectively. Image was developed using FeQ™ ECL Substrate Kit (Cat#226).

SUPPORT

SUPPORT@GENUINBIOTECH.COM
TEL: +1-540-855-7041

ORDERS

SALES@GENUINBIOTECH.COM
FAX: +1-540-855-7041

WWW.GENUINBIOTECH.COM