

Anti-Cytochrome B5 Reductase Recombinant Rabbit Monoclonal Antibody



Catalog #: 2897

Aliases

CYB5R3; Cytochrome B5 Reductase 3; B5R; NADH-Cytochrome B5 Reductase 3; DIA1; Diaphorase-1; EC 1.6.2.2; NADH-Cytochrome B5 Reductase 3 Membrane-Bound Form; Diaphorase (NADH) (Cytochrome B-5 Reductase; NADH-Cytochrome B5 Reductase 3 Soluble Form; Mutant NADH-Cytochrome B5 Reductase; Cytochrome B5 Reductase

Background

Gene Name: CYB5R3

NCBI Gene Entry: [1727](#)

UniProt Entry: [P00387](#)

Application Information

Molecular Weight: Predicted, 34 kDa; observed, 34 kDa

Clonality: Rabbit monoclonal antibody

Clone ID: 24GB3060

Species Reactivity: Human, rat

Applications Tested: Western blotting (WB), flow cytometry (FCM), immunocytochemistry (IC)

Immunogen

A synthesized peptide derived from human CYB5R3

Isotype

Rabbit IgG

Storage Buffer

Supplied in PBS (pH 7.4) containing 50% glycerol, and 0.02% sodium azide.

Storage

Store at -20 °C for one year.

Recommended Dilutions

Western Blotting (WB): 1:1,000-1:5,000

Flow Cytometry (FCM): 1:2,000

Immunocytochemistry (IC): 1:100-1:1,000

SUPPORT

SUPPORT@GENUINBIOTECH.COM
TEL: +1-540-855-7041

ORDERS

SALES@GENUINBIOTECH.COM
FAX: +1-540-855-7041

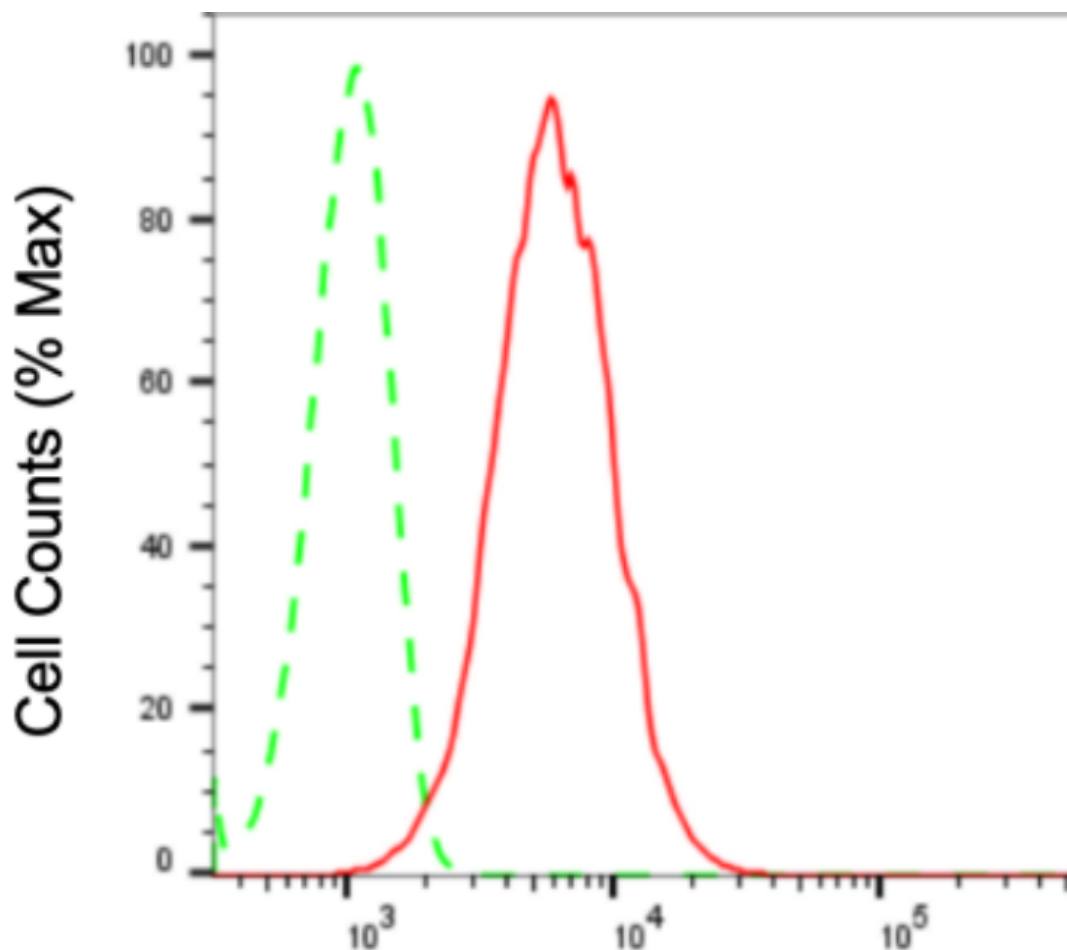
WWW.GENUINBIOTECH.COM

Anti-Cytochrome B5 Reductase Recombinant Rabbit Monoclonal Antibody

PAGE 2

Note: This product is for research use only.

Validation Data



Copyright ©2024 Genuin Biotechnologies LLC

Cytochrome b5 reductase 3-Alexa Fluor® 647

Flow cytometric analysis of cytochrome b5 reductase 3 expression in H9c2 cells using anti-cytochrome b5 reductase 3 antibody (Cat#2897, 1:2,000). Green, isotype control; red, cytochrome b5 reductase 3.

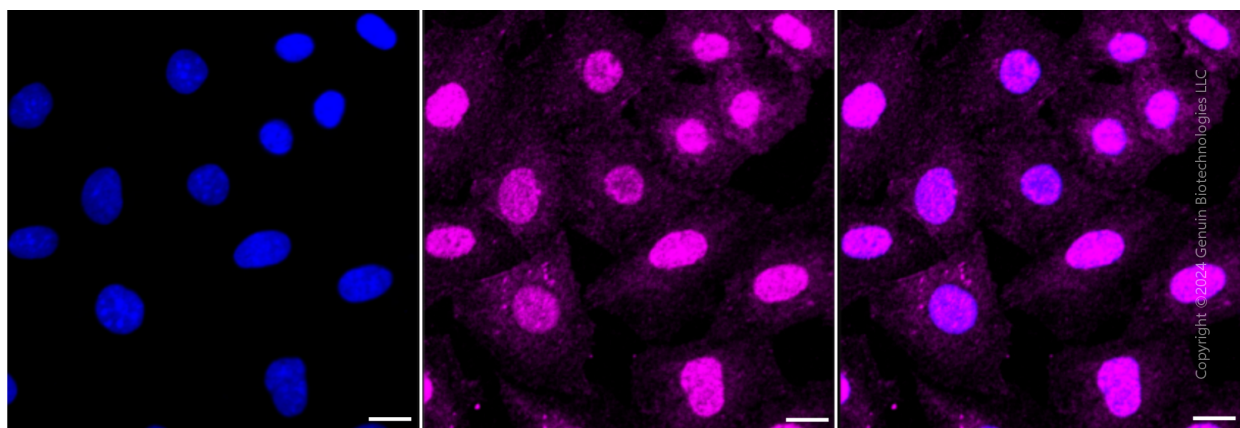
SUPPORT

SUPPORT@GENUINBIOTECH.COM
TEL: +1-540-855-7041

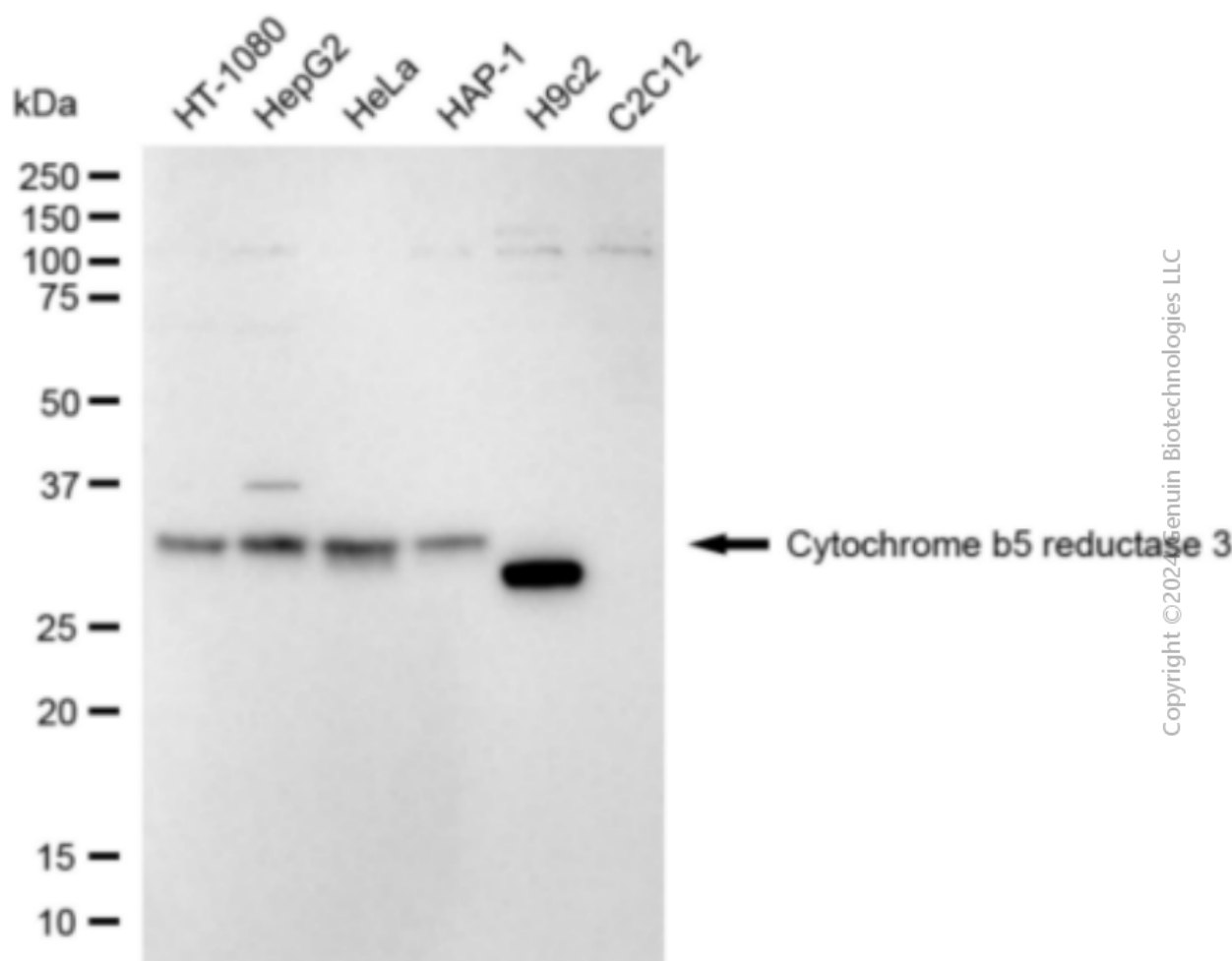
ORDERS

SALES@GENUINBIOTECH.COM
FAX: +1-540-855-7041

WWW.GENUINBIOTECH.COM



Immunocytochemical staining of H9c2 cells with anti-cytochrome b5 reductase 3 antibody (Cat#2897, 1:1,000) . Nuclei were stained blue with DAPI; cytochrome b5 reductase 3 was stained magenta with Alexa Fluor® 647. Images were taken using leica stellaris 5. Protein abundance based on laser intensity and smart gain: Medium. Scale bar: 20 μm.



Western blotting analysis using anti-Cytochrome b5 reductase 3 antibody (Cat#2897). Total cell lysates (5 μg) from various cell lines were loaded and separated by SDS-PAGE. The blot was

Anti-Cytochrome B5 Reductase Recombinant Rabbit Monoclonal Antibody

PAGE 4

incubated with anti-Cytochrome b5 reductase 3 antibody (Cat#2897, 1:5,000) and HRP-conjugated goat anti-rabbit secondary antibody (Cat#201, 1:20,000) respectively. Image was developed using FeQ™ ECL Substrate Kit (Cat#226).

SUPPORT

SUPPORT@GENUINBIOTECH.COM
TEL: +1-540-855-7041

ORDERS

SALES@GENUINBIOTECH.COM
FAX: +1-540-855-7041

WWW.GENUINBIOTECH.COM