

Anti-Epoxyde Hydrolase 2 Recombinant Rabbit Monoclonal Antibody



Catalog #: 2899

Aliases

EPHX2; Epoxide Hydrolase 2; ABHD20; SEH; Epoxide Hydrolase 2, Cytoplasmic; Bifunctional Epoxide Hydrolase 2; Bifunctional Epoxide Hydrolase; Epoxide Hydrolase 2, Cytosolic; Epoxide Hydrolase, Soluble; Soluble Epoxide Hydrolase; Epoxide Hydratase; CEH

Background

Gene Name: EPHX2

NCBI Gene Entry: [2053](#)

UniProt Entry: [P34913](#)

Application Information

Molecular Weight: Predicted, 63 kDa; observed, 70 kDa

Clonality: Rabbit monoclonal antibody

Clone ID: 24GB3070

Species Reactivity: Human, mouse, rat

Applications Tested: Western blotting (WB), flow cytometry (FCM), immunocytochemistry (IC)

Immunogen

A synthesized peptide derived from human EPHX2

Isotype

Rabbit IgG

Storage Buffer

Supplied in PBS (pH 7.4) containing 50% glycerol, and 0.02% sodium azide.

Storage

Store at -20 °C for one year.

Recommended Dilutions

Western Blotting (WB): 1:1,000-1:5,000

Flow Cytometry (FCM): 1:2,000

Immunocytochemistry (IC): 1:100-1:1,000

Note: This product is for research use only.

SUPPORT

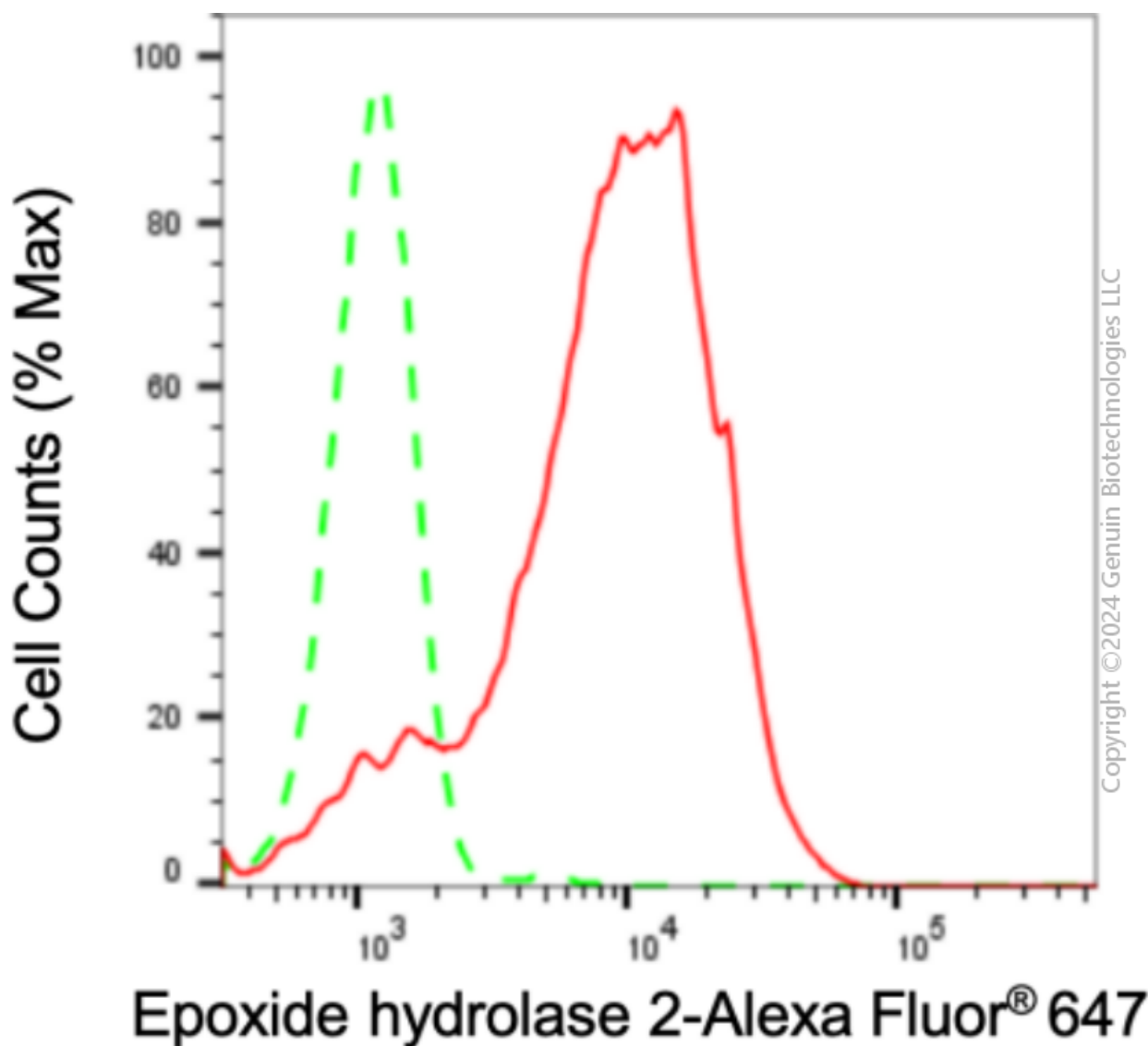
SUPPORT@GENUINBIOTECH.COM
TEL: +1-540-855-7041

ORDERS

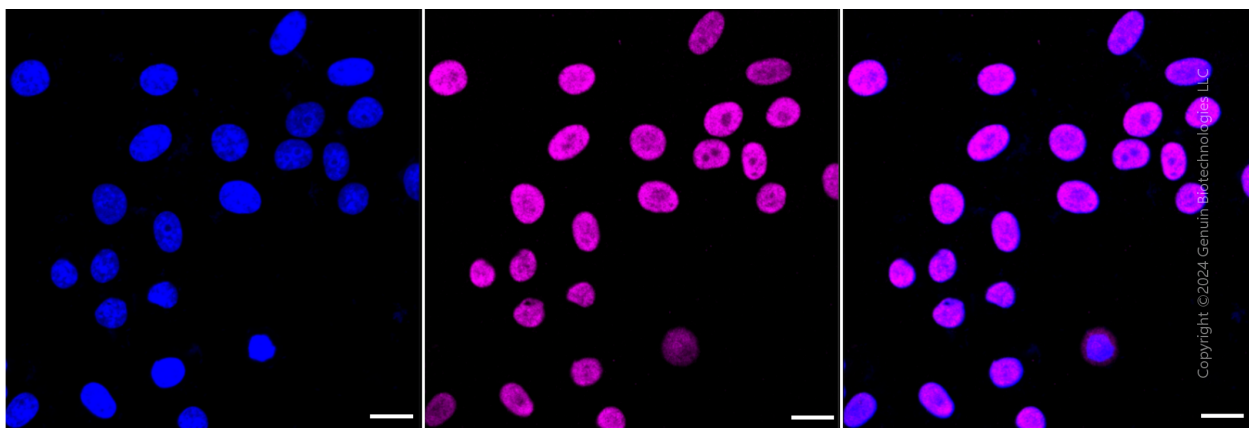
SALES@GENUINBIOTECH.COM
FAX: +1-540-855-7041

WWW.GENUINBIOTECH.COM

Validation Data



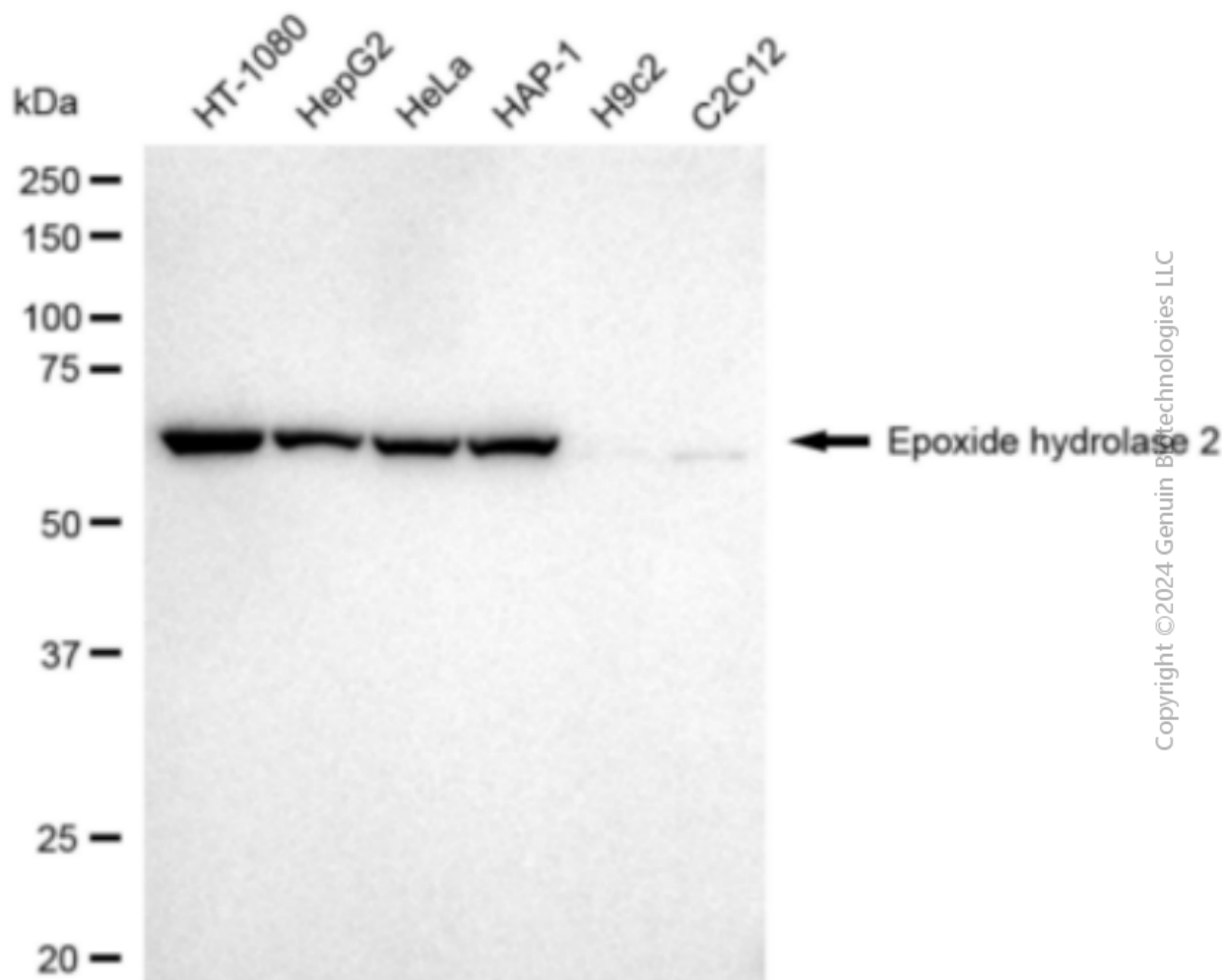
Flow cytometric analysis of Epoxide hydrolase 2 expression in HepG2 cells using anti-Epoxide hydrolase 2c antibody (Cat#2899, 1:2,000). Green, isotype control; red, Epoxide hydrolase 2.



Anti-Epoxyde Hydrolase 2 Recombinant Rabbit Monoclonal Antibody

PAGE 3

Immunocytochemical staining of HepG2 cells with anti-Epoxyde hydrolase 2 antibody (Cat#2899, 1:1,000). Nuclei were stained blue with DAPI; Epoxyde hydrolase 2 was stained magenta with Alexa Fluor® 647. Images were taken using Leica stellaris 5. Protein abundance based on laser Intensity and smart gain: High. Scale bar: 20 µm.



Western blotting analysis using anti-Epoxyde hydrolase 2 antibody (Cat#2899). Total cell lysates (30 µg) from various cell lines were loaded and separated by SDS-PAGE. The blot was incubated with anti-Epoxyde hydrolase 2 antibody (Cat#2899, 1:5,000) and HRP-conjugated goat anti-rabbit secondary antibody (Cat#201, 1:20,000) respectively. Image was developed using FeQ™ ECL Substrate Kit (Cat#226).

SUPPORT

SUPPORT@GENUINBIOTECH.COM
TEL: +1-540-855-7041

ORDERS

SALES@GENUINBIOTECH.COM
FAX: +1-540-855-7041

WWW.GENUINBIOTECH.COM