

Anti-Adenylate Kinase 2 Recombinant Rabbit Monoclonal Antibody



Catalog #: 2900

Aliases

AK2; Adenylate Kinase 2; Adenylate Kinase 2, Mitochondrial; Adenylate Monophosphate Kinase; ATP-AMP Transphosphorylase 2; ATP:AMP Phosphotransferase; EC 2.7.4.3; ADK2; Testis Secretory Sperm-Binding Protein Li 220n; Adenylate Kinase Isoenzyme 2, Mitochondrial; EC 2.7.4; AK 2

Background

Gene Name: AK2

NCBI Gene Entry: [204](#)

UniProt Entry: [P54819](#)

Application Information

Molecular Weight: Predicted, 26 kDa; observed, 26 kDa

Clonality: Rabbit monoclonal antibody

Clone ID: 24GB3075

Species Reactivity: Human, mouse, rat

Applications Tested: Western blotting (WB), immunocytochemistry (IC), flow cytometry (FCM)

Immunogen

A synthesized peptide derived from human AK2

Isotype

Rabbit IgG

Storage Buffer

Supplied in PBS (pH 7.4) containing 50% glycerol, and 0.02% sodium azide.

Storage

Store at -20 °C for one year.

Recommended Dilutions

Western Blotting (WB): 1:1,000-1:5,000

Immunocytochemistry (IC): 1:100-1:1,000

Flow Cytometry (FCM): 1:2,000

SUPPORT

SUPPORT@GENUINBIOTECH.COM
TEL: +1-540-855-7041

ORDERS

SALES@GENUINBIOTECH.COM
FAX: +1-540-855-7041

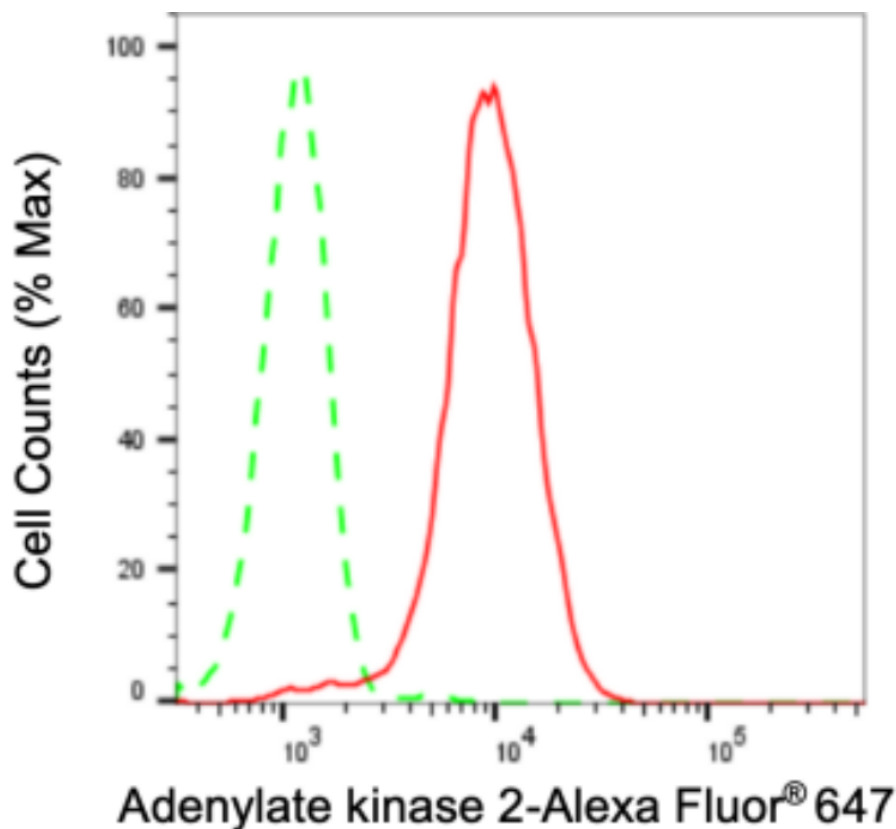
WWW.GENUINBIOTECH.COM

Anti-Adenylate Kinase 2 Recombinant Rabbit Monoclonal Antibody

PAGE 2

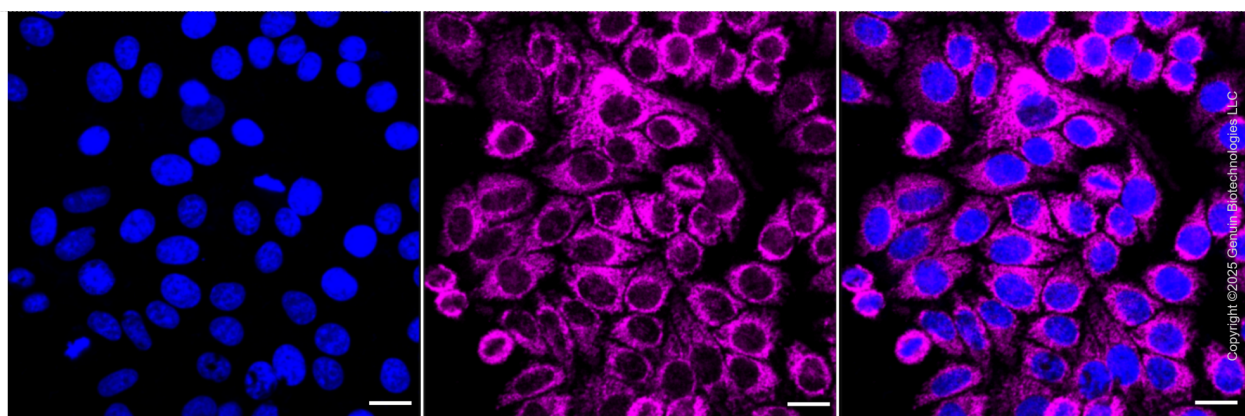
Note: This product is for research use only.

Validation Data



Copyright ©2024 Genuin Biotechnologies LLC

Flow cytometric analysis of Adenylate kinase 2 expression in HepG2 cells using anti-Adenylate kinase 2 antibody (Cat#2900, 1:2,000). Green, isotype control; red, Adenylate kinase 2.



Copyright ©2025 Genuin Biotechnologies LLC

Immunocytochemical staining of HepG2 cells with anti-Adenylate kinase 2 antibody (Cat#2900, 1:1,000) . Nuclei were stained blue with DAPI; Adenylate kinase 2 was stained magenta with Alexa Fluor® 647. Images were taken using Leica stellaris 5. Protein abundance based on laser Intensity and smart gain: Medium. Scale bar: 20 μm.

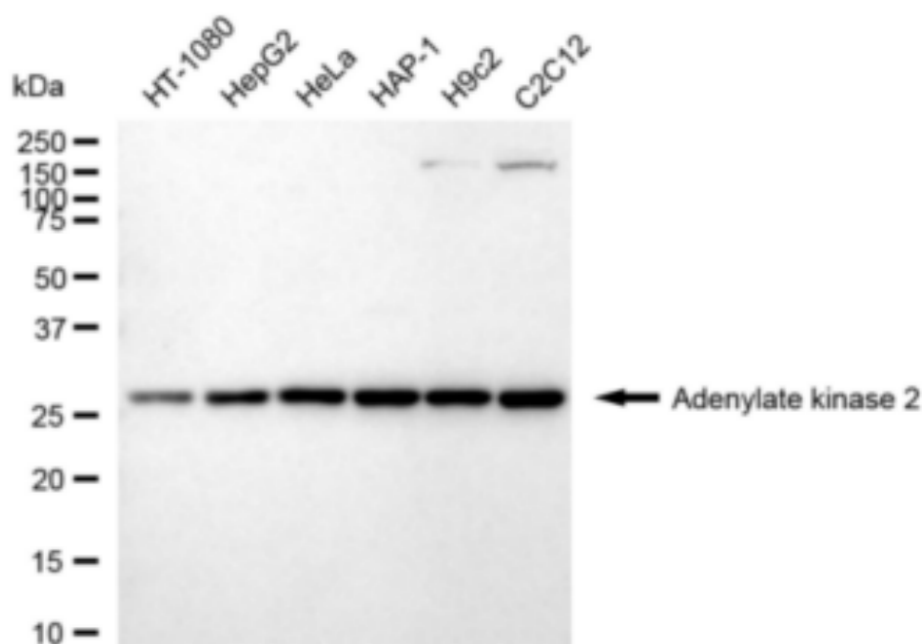
SUPPORT

SUPPORT@GENUINBIOTECH.COM
TEL: +1-540-855-7041

ORDERS

SALES@GENUINBIOTECH.COM
FAX: +1-540-855-7041

WWW.GENUINBIOTECH.COM



Copyright ©2024 Genuin Biotechnologies LLC

Western blotting analysis using anti-Adenylate kinase 2 antibody (Cat#2900). Total cell lysates (30 µg) from various cell lines were loaded and separated by SDS-PAGE. The blot was incubated with anti-Adenylate kinase 2 antibody (Cat#2900, 1:5,000) and HRP-conjugated goat anti-rabbit secondary antibody (Cat#201, 1:20,000) respectively. Image was developed using FeQ™ ECL Substrate Kit (Cat#226).