

# Anti-Caveolin 1 Recombinant Rabbit Monoclonal Antibody



**Catalog #: 2901**

## Aliases

CAV1; Caveolin 1; Caveolin 1, Caveolae Protein, 22kDa; Caveolin-1; CAV; Caveolin 1, Caveolae Protein, 22kD; Cell Growth-Inhibiting Protein 32; MSTP085; BSCL3; LCCNS; VIP21; CGL3; PPH3

## Background

Gene Name: CAV1

NCBI Gene Entry: [857](#)

UniProt Entry: [Q03135](#)

## Application Information

Molecular Weight: Predicted, 20 kDa; observed, 20 kDa

Clonality: Rabbit monoclonal antibody

Clone ID: 24GB3080

Species Reactivity: Human

Applications Tested: Western blotting (WB), immunocytochemistry (IC)

## Immunogen

A synthesized peptide derived from human Caveolin-1

## Isotype

Rabbit IgG

## Storage Buffer

Supplied in PBS (pH 7.4) containing 50% glycerol, and 0.02% sodium azide.

## Storage

Store at -20 °C for one year.

## Recommended Dilutions

Western Blotting (WB): 1:1,000-1:5,000

Immunocytochemistry (IC): 1:100-1:1,000

**Note:** This product is for research use only.

## Validation Data

---

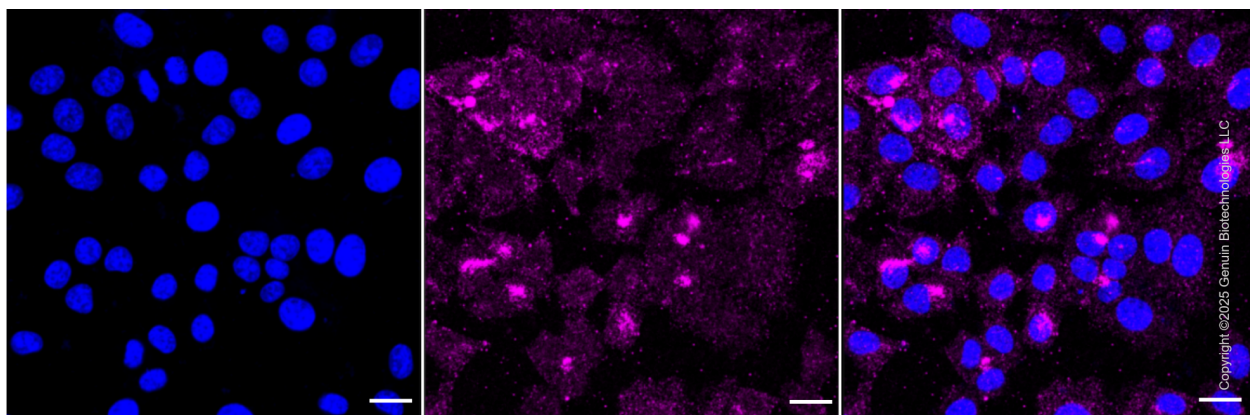
### SUPPORT

SUPPORT@GENUINBIOTECH.COM  
TEL: +1-540-855-7041

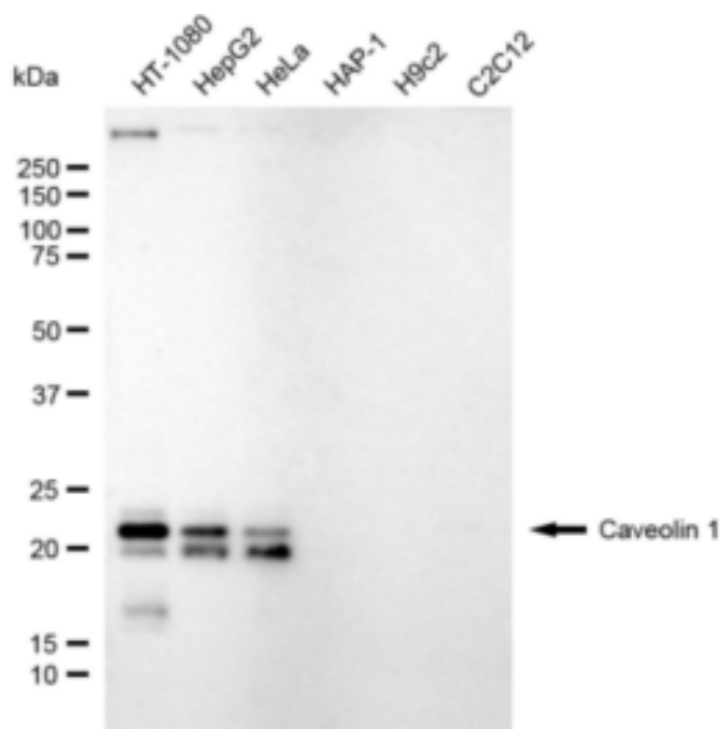
### ORDERS

SALES@GENUINBIOTECH.COM  
FAX: +1-540-855-7041

[WWW.GENUINBIOTECH.COM](http://WWW.GENUINBIOTECH.COM)



Immunocytochemical staining of HepG2 cells with anti-Caveolin 1 antibody (Cat#2901, 1:1,000) . Nuclei were stained blue with DAPI; Caveolin 1 was stained magenta with Alexa Fluor® 647. Images were taken using Leica stellaris 5. Protein abundance based on laser Intensity and smart gain: Medium. Scale bar: 20 µm.



Western blotting analysis using anti-Caveolin 1 antibody (Cat#2901). Total cell lysates (5 µg) from various cell lines were loaded and separated by SDS-PAGE. The blot was incubated with anti-Caveolin 1 antibody (Cat#2901, 1:5,000) and HRP-conjugated goat anti-rabbit secondary antibody (Cat#201, 1:20,000) respectively. Image was developed using FeQ™ ECL Substrate Kit (Cat#226).