

Anti-AIFM1 Recombinant Rabbit Monoclonal Antibody



Catalog #: 2902

Aliases

AIFM1; Apoptosis Inducing Factor Mitochondria Associated 1; AIF; CMTX4; DFNX5; PDCD8; Apoptosis-Inducing Factor, Mitochondrion-Associated, 1; Programmed Cell Death 8 (Apoptosis-Inducing Factor); Apoptosis-Inducing Factor 1, Mitochondrial; Auditory Neuropathy, X-Linked Recessive 1; AUNX1; NAMS; Neuropathy, Axonal, Motor-Sensory With Deafness And Mental Retardation (Cowchock Syndrome); Apoptosis Inducing Factor, Mitochondria Associated 1; Striatal Apoptosis-Inducing Factor; Testicular Secretory Protein Li 4; Programmed Cell Death Protein 8; EC 1.6.99.-; COXPD6; SEMDHL; CMT2D; COWCK; NADMR

Background

Gene Name: AIFM1

NCBI Gene Entry: [9131](#)

UniProt Entry: [O95831](#)

Application Information

Molecular Weight: Predicted, 67 kDa; observed, 67 kDa

Clonality: Rabbit monoclonal antibody

Clone ID: 24GB3085

Species Reactivity: Human, mouse, rat

Applications Tested: Western blotting (WB), flow cytometry (FCM), immunocytochemistry (IC)

Immunogen

A synthesized peptide derived from human AIF

Isotype

Rabbit IgG

Storage Buffer

Supplied in PBS (pH 7.4) containing 50% glycerol, and 0.02% sodium azide.

Storage

Store at -20 °C for one year.

Recommended Dilutions

Western Blotting (WB): 1:1,000-1:5,000

Flow Cytometry (FCM): 1:2,000

SUPPORT

SUPPORT@GENUINBIOTECH.COM
TEL: +1-540-855-7041

ORDERS

SALES@GENUINBIOTECH.COM
FAX: +1-540-855-7041

WWW.GENUINBIOTECH.COM

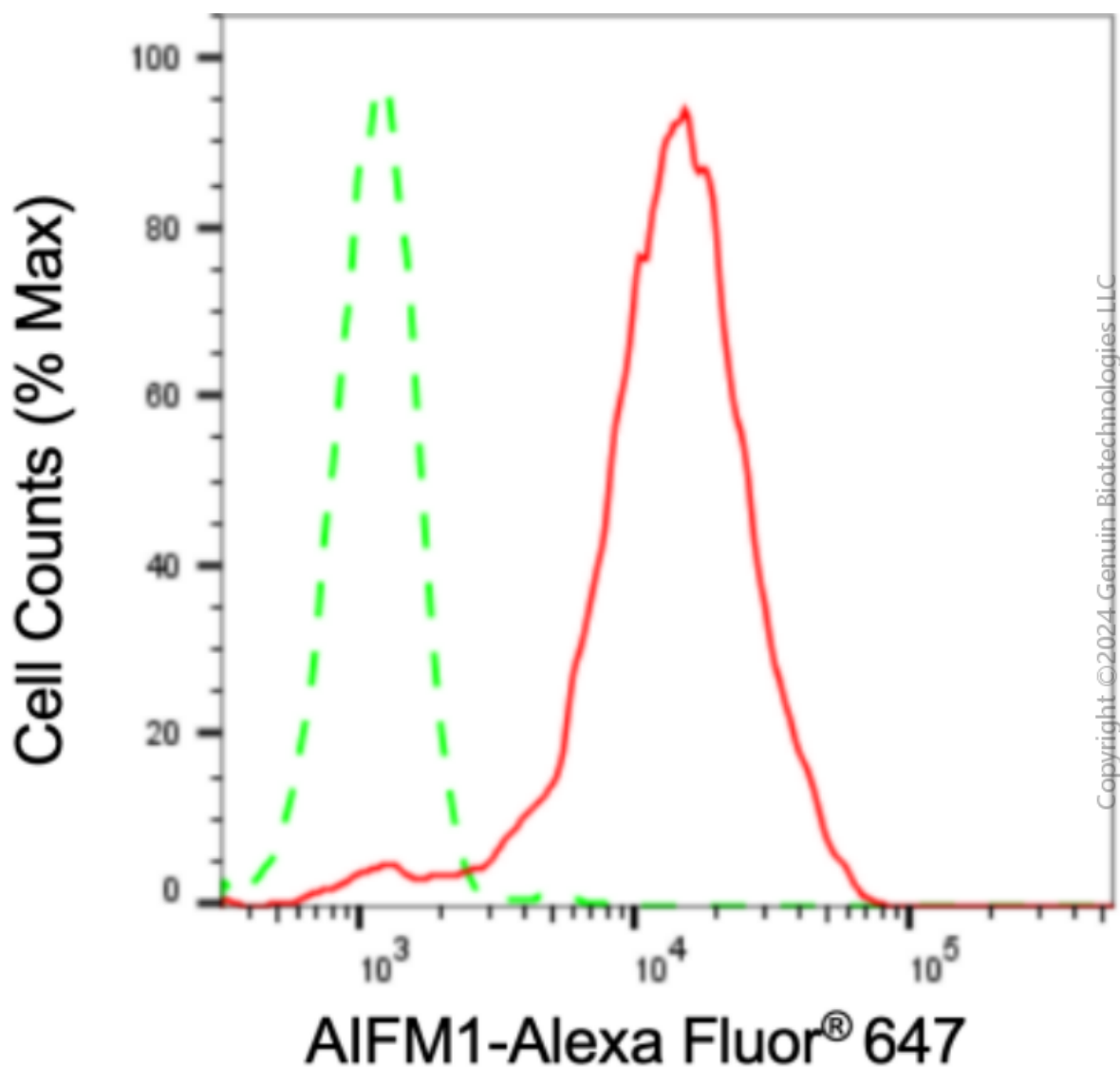
Anti-AIFM1 Recombinant Rabbit Monoclonal Antibody

PAGE 2

Immunocytochemistry (IC): 1:100-1:1,000

Note: This product is for research use only.

Validation Data



Flow cytometric analysis of AIFM1 expression in HepG2 cells using anti-AIFM1 antibody (Cat#2902, 1:2,000). Green, isotype control; red, AIFM1.

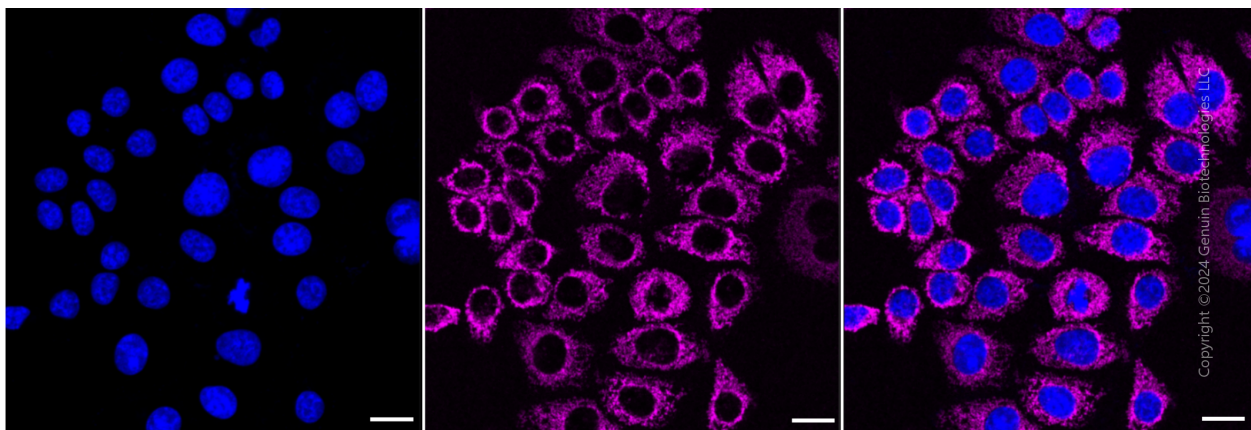
SUPPORT

SUPPORT@GENUINBIOTECH.COM
TEL: +1-540-855-7041

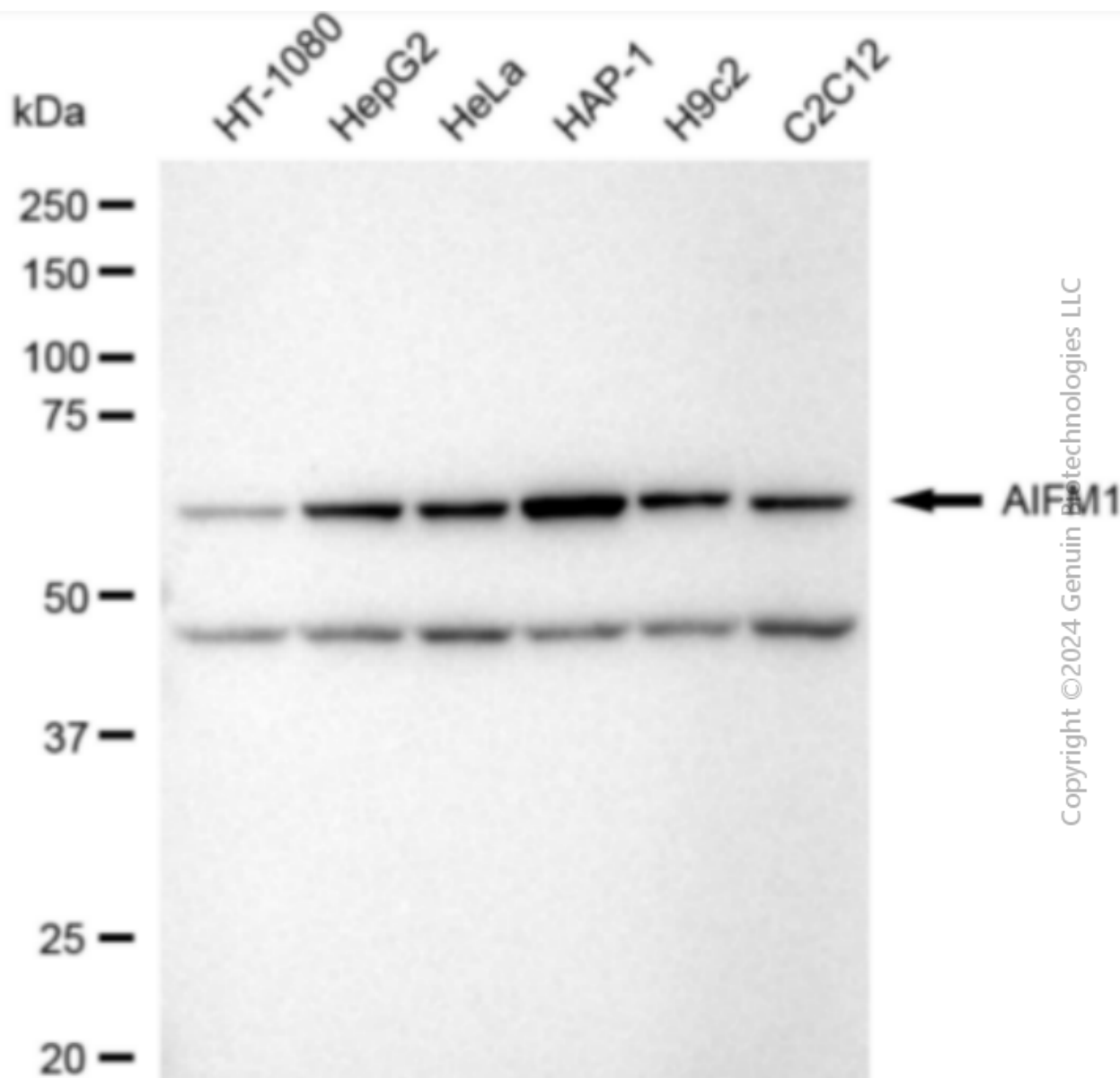
ORDERS

SALES@GENUINBIOTECH.COM
FAX: +1-540-855-7041

WWW.GENUINBIOTECH.COM



Immunocytochemical staining of HepG2 cells with anti-AIFM1 antibody (Cat#2902, 1:1,000). Nuclei were stained blue with DAPI; AIFM1 was stained magenta with Alexa Fluor® 647. Images were taken using Leica stellaris 5. Protein abundance based on laser Intensity and smart gain: High. Scale bar: 20 μ m.



Western blotting analysis using anti-AIFM1 antibody (Cat#2902). Total cell lysates (5 μ g) from various cell lines were loaded and separated by SDS-PAGE. The blot was incubated with anti-AIFM1 antibody (Cat#2902, 1:5,000) and HRP-conjugated goat anti-rabbit secondary antibody (Cat#201, 1:20,000) respectively. Image was developed using FeQTM ECL Substrate Kit (Cat#226).