

# Anti-Tumor Protein P53 Recombinant Rabbit Monoclonal Antibody



**Catalog #: 2905**

## Aliases

TP53; Tumor Protein P53; P53; LFS1; Cellular Tumor Antigen P53; Phosphoprotein P53; Antigen NY-CO-13; Transformation-Related Protein 53; Mutant Tumor Protein 53; Li-Fraumeni Syndrome; Tumor Suppressor P53; Tumor Suppressor P53; Tumor Protein 53; BMFS5; TRP53; BCC7

## Background

Gene Name: TP53

NCBI Gene Entry: [7157](#)

UniProt Entry: [P04637](#)

## Application Information

Molecular Weight: Predicted, 44 kDa; observed, 53 kDa

Clonality: Rabbit monoclonal antibody

Clone ID: 24GB3100

Species Reactivity: Human

Applications Tested: Western blotting (WB), flow cytometry (FCM), immunocytochemistry (IC)

## Immunogen

A synthesized peptide derived from human p53

## Isotype

Rabbit IgG

## Storage Buffer

Supplied in PBS (pH 7.4) containing 50% glycerol, and 0.02% sodium azide.

## Storage

Store at -20 °C for one year.

## Recommended Dilutions

Western Blotting (WB): 1:1,000-1:5,000

Flow Cytometry (FCM): 1:2,000

Immunocytochemistry (IC): 1:100-1:1,000

---

### SUPPORT

SUPPORT@GENUINBIOTECH.COM  
TEL: +1-540-855-7041

### ORDERS

SALES@GENUINBIOTECH.COM  
FAX: +1-540-855-7041

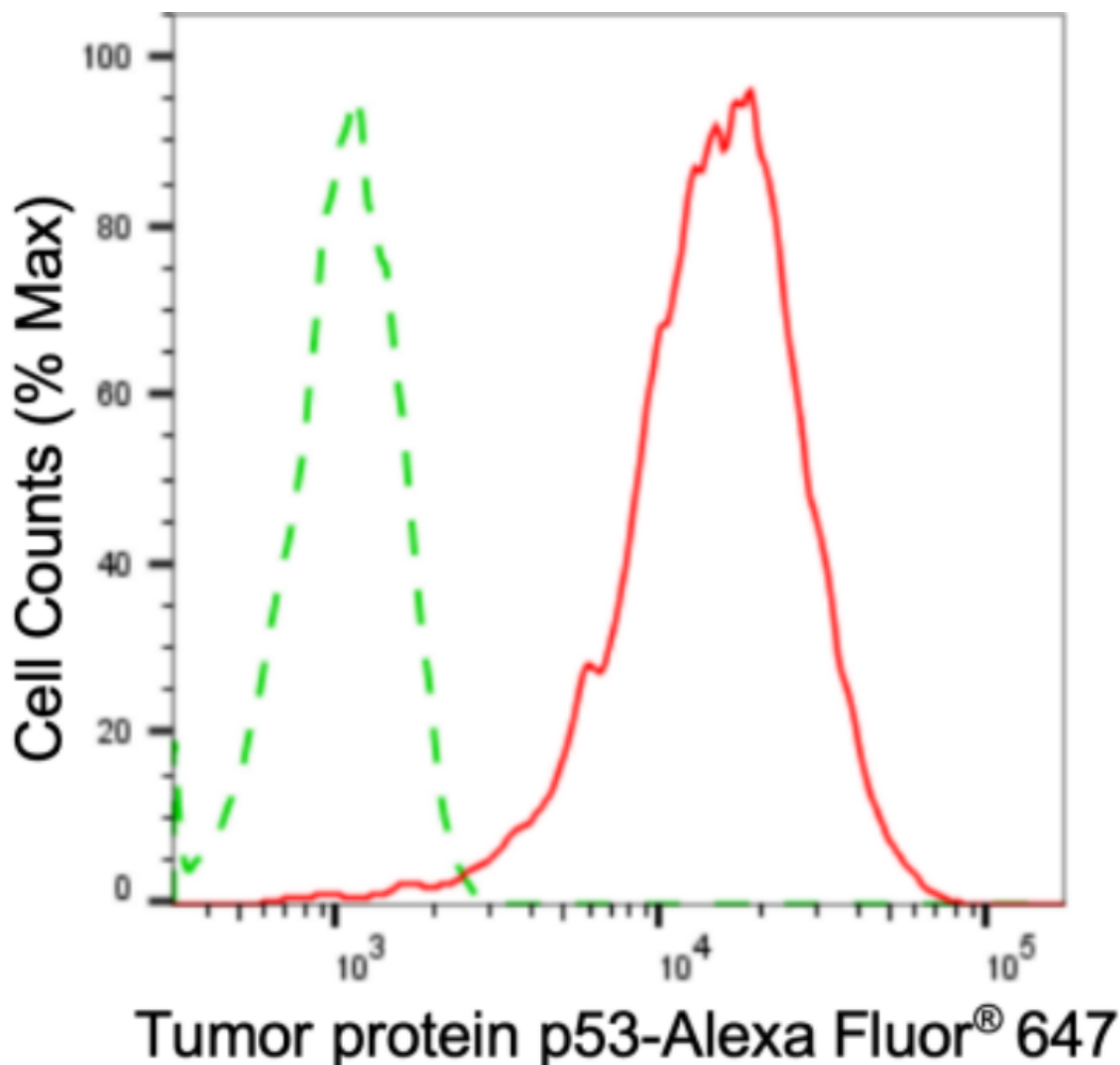
[WWW.GENUINBIOTECH.COM](http://WWW.GENUINBIOTECH.COM)

# Anti-Tumor Protein P53 Recombinant Rabbit Monoclonal Antibody

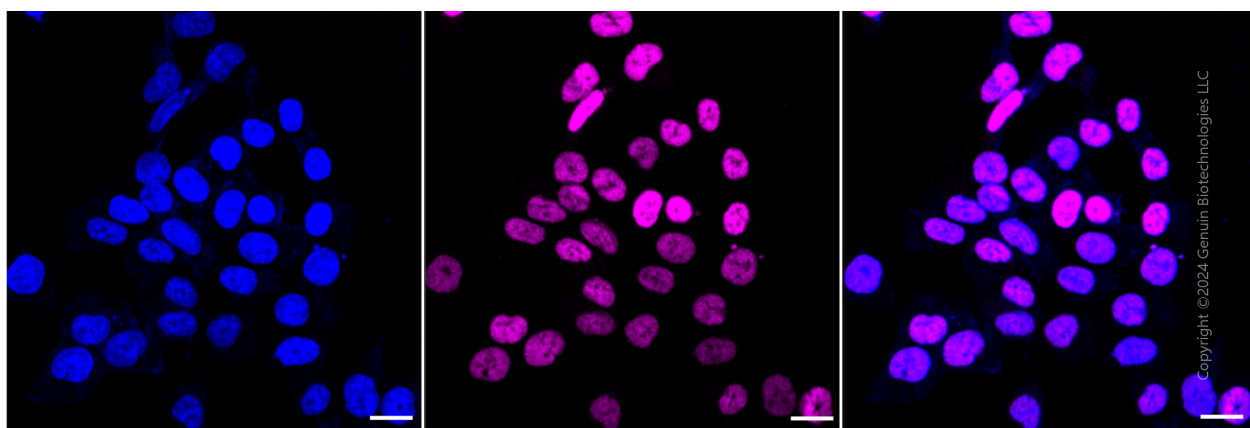
PAGE 2

**Note:** This product is for research use only.

## Validation Data



Flow cytometric analysis of tumor protein p53 expression in HAP-1 cells using anti-tumor protein p53 antibody (Cat#2905, 1  $\mu$ g/2,000). Green, isotype control; red, tumor protein p53.



### SUPPORT

SUPPORT@GENUINBIOTECH.COM  
TEL: +1-540-855-7041

### ORDERS

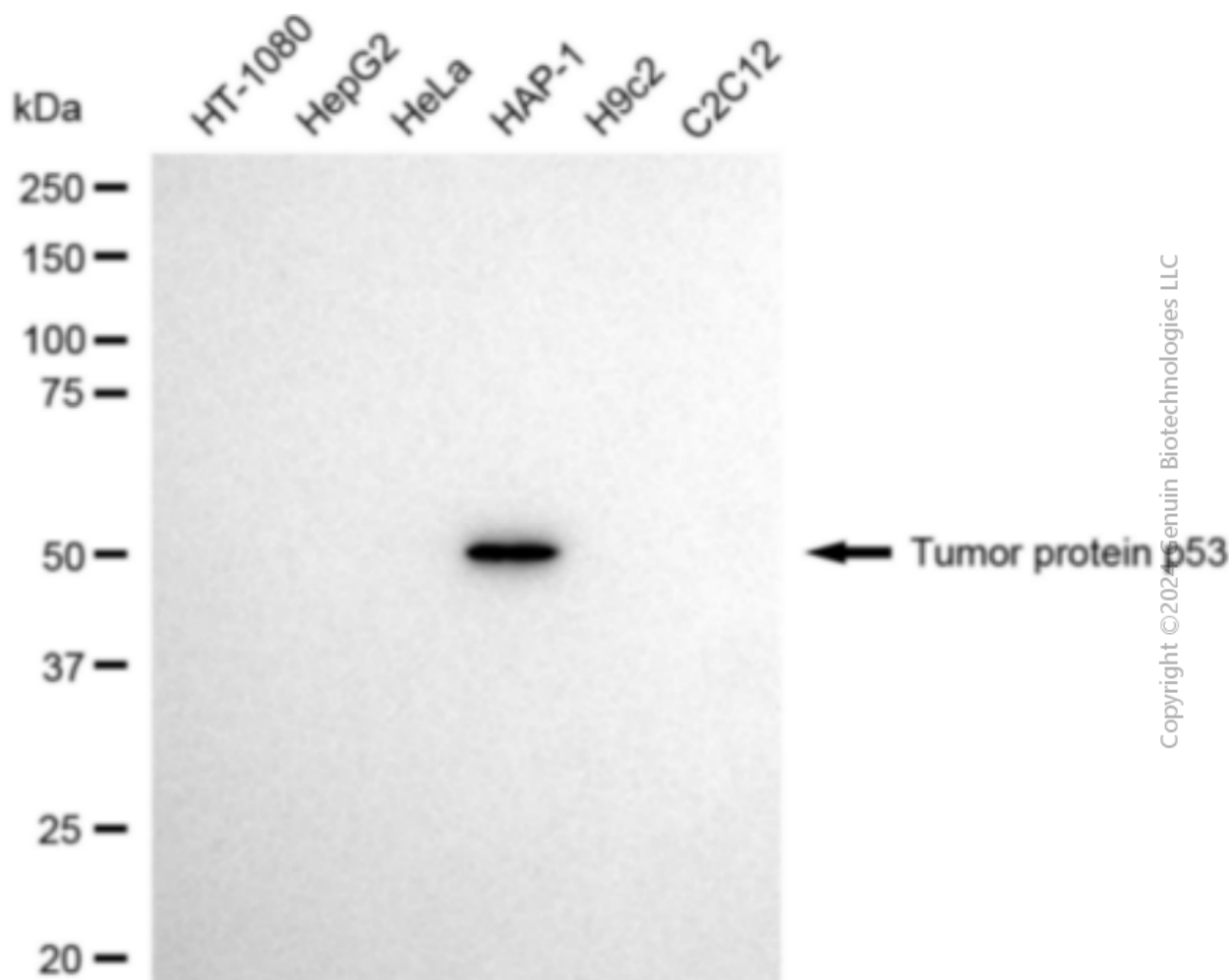
SALES@GENUINBIOTECH.COM  
FAX: +1-540-855-7041

WWW.GENUINBIOTECH.COM

## Anti-Tumor Protein P53 Recombinant Rabbit Monoclonal Antibody

PAGE 3

Immunocytochemical staining of HAP-1 with anti-tumor protein p53 antibody (Cat#2905, 1:1,000). Nuclei were stained blue with DAPI; Tumor protein p53 was stained magenta with Alexa Fluor® 647. Images were taken using Leica stellaris 5. Protein abundance based on laser Intensity and smart gain: Medium. Scale bar: 20  $\mu$ m.



Western blotting analysis using anti-Tumor protein p53 antibody (Cat#2905). Total cell lysates (30  $\mu$ g) from various cell lines were loaded and separated by SDS-PAGE. The blot was incubated with anti-Tumor protein p53 antibody (Cat#2905, 1:5,000) and HRP-conjugated goat anti-rabbit secondary antibody (Cat#201, 1:20,000) respectively. Image was developed using FeQ™ ECL Substrate Kit (Cat#226).

### SUPPORT

SUPPORT@GENUINBIOTECH.COM  
TEL: +1-540-855-7041

### ORDERS

SALES@GENUINBIOTECH.COM  
FAX: +1-540-855-7041

[WWW.GENUINBIOTECH.COM](http://WWW.GENUINBIOTECH.COM)