

Catalog #: 2911

Aliases

ENO1; Enolase 1; Alpha-Enolase; ENO1L1; MBP-1; MPB1; PPH; ENO1 Intronic Transcript 1 (Non-Protein Coding); 2-Phospho-D-Glycerate Hydro-Lyase; Plasminogen-Binding Protein; ENO1 Intronic Transcript 1; Phosphopyruvate Hydratase; Enolase 1, (Alpha); Non-Neural Enolase; EC 4.2.1.11; ENO1-IT1; NNE; Epididymis Secretory Protein Li 17; C-Myc Promoter-Binding Protein-1; MYC Promoter-Binding Protein 1; C-Myc Promoter-Binding Protein; Alpha Enolase Like 1; Tau-Crystallin; Enolase-Alpha; HEL-S-17; EC 4.2.1; MBPB1; MPB-1

Background

Gene Name: ENO1

NCBI Gene Entry: [2023](#)

UniProt Entry: [P06733](#)

Application Information

Molecular Weight: Predicted, 47 kDa; observed, 47 kDa

Clonality: Rabbit monoclonal antibody

Clone ID: 24GB3130

Species Reactivity: Human, mouse, rat

Applications Tested: Western blotting (WB), flow cytometry (FCM), immunocytochemistry (IC)

Immunogen

A synthesized peptide derived from human ENO1

Isotype

Rabbit IgG

Storage Buffer

Supplied in PBS (pH 7.4) containing 50% glycerol, and 0.02% sodium azide.

Storage

Store at -20 °C for one year.

Recommended Dilutions

Western Blotting (WB): 1:1,000-1:5,000

Flow Cytometry (FCM): 1:2,000

Immunocytochemistry (IC): 1:100-1:1,000

SUPPORT

SUPPORT@GENUINBIOTECH.COM
TEL: +1-540-855-7041

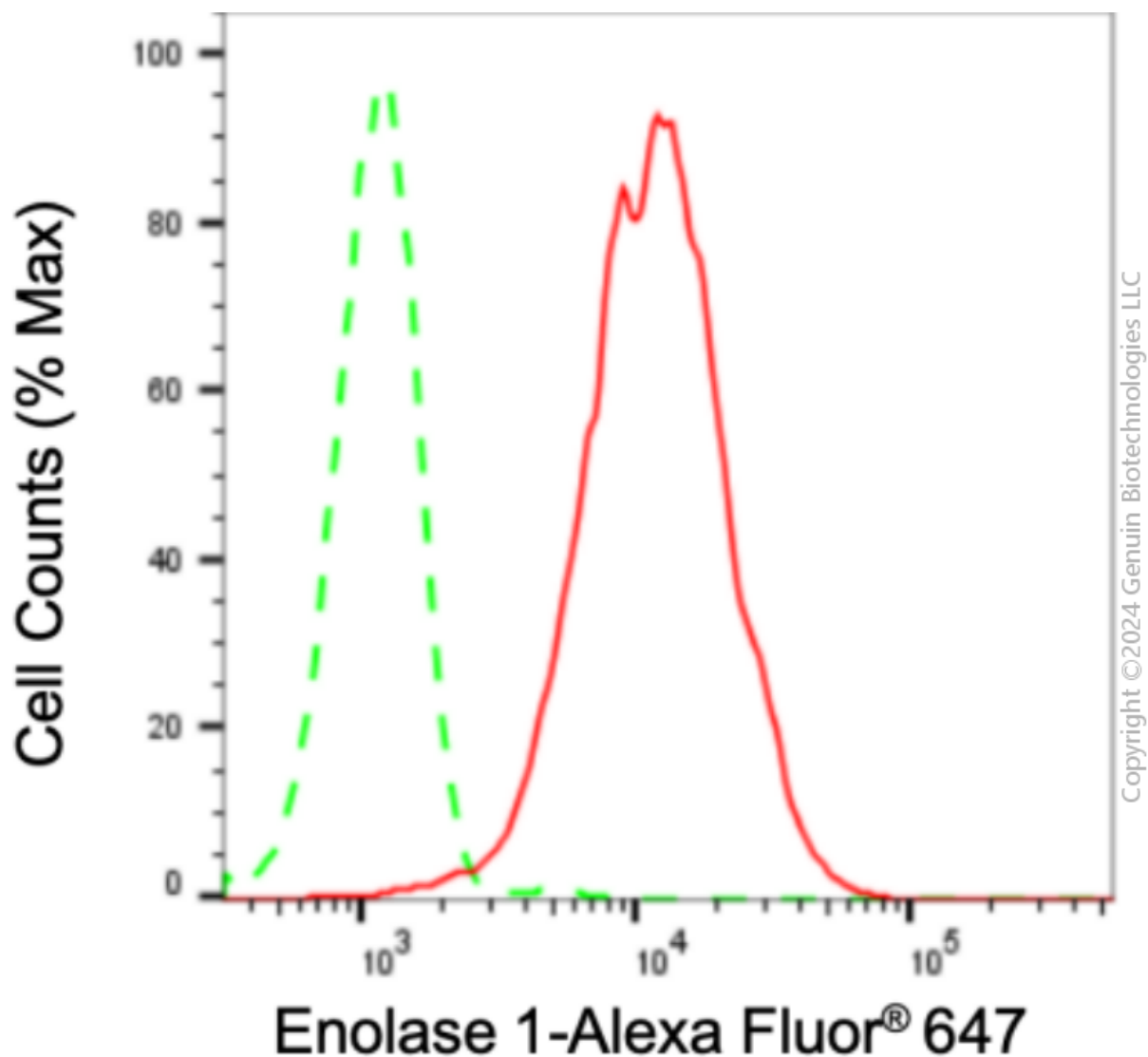
ORDERS

SALES@GENUINBIOTECH.COM
FAX: +1-540-855-7041

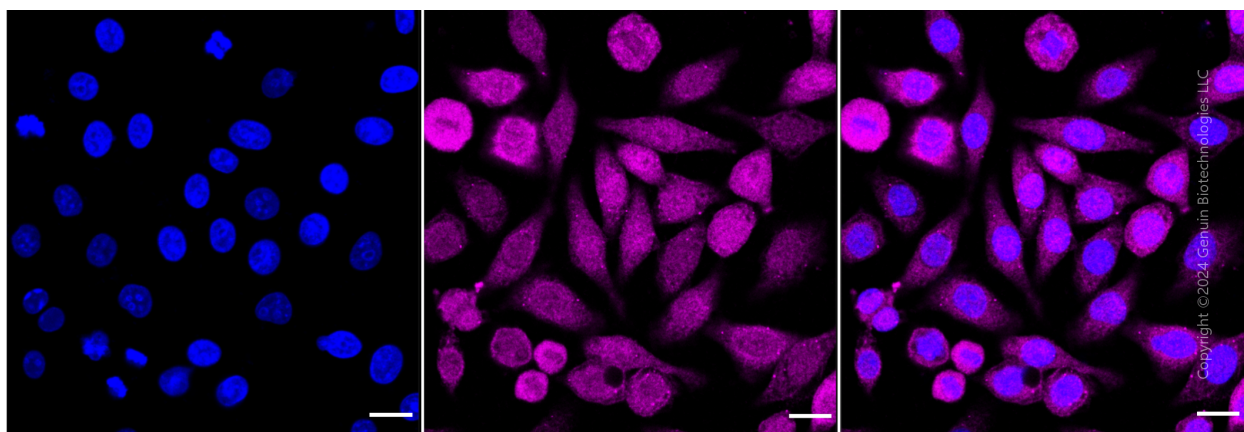
WWW.GENUINBIOTECH.COM

Note: This product is for research use only.

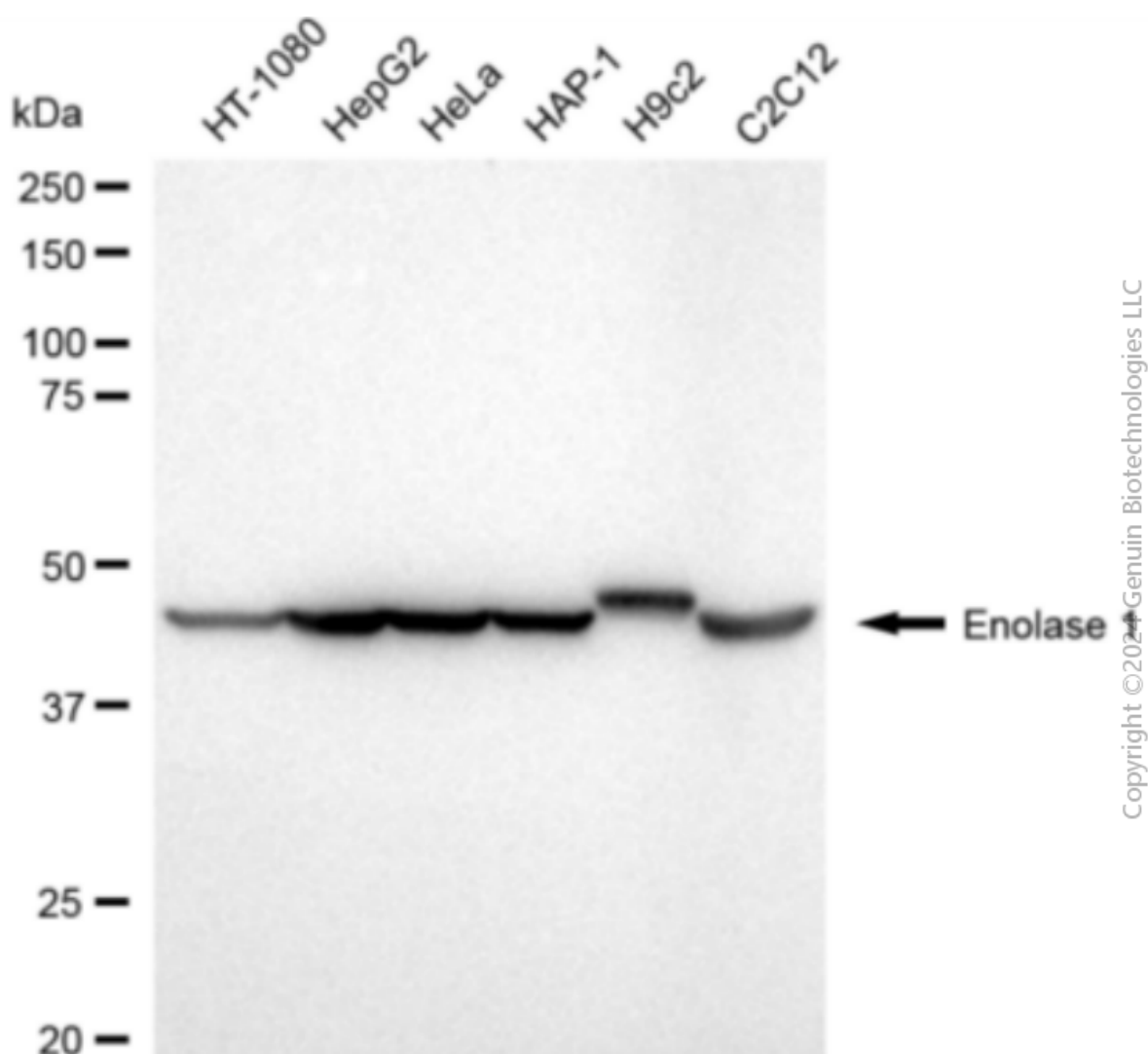
Validation Data



Flow cytometric analysis of Enolase 1 expression in HepG2 cells using anti-Enolase 1 antibody (Cat#2911, 1:2,000). Green, isotype control; red, Enolase 1.



Immunocytochemical staining of HepG2 cells with anti-Enolase 1 antibody (Cat#2911, 1:1,000). Nuclei were stained blue with DAPI; Enolase 1 was stained magenta with Alexa Fluor® 647. Images were taken using Leica stellaris 5. Protein abundance based on laser Intensity and smart gain: Medium. Scale bar: 20 μ m.



Anti-Enolase 1 Recombinant Rabbit Monoclonal Antibody

PAGE 4

Western blotting analysis using anti-Enolase 1 antibody (Cat#2911). Total cell lysates (30 µg) from various cell lines were loaded and separated by SDS-PAGE. The blot was incubated with anti-Enolase 1 antibody (Cat#2911, 1:5,000) and HRP-conjugated goat anti-rabbit secondary antibody (Cat#201, 1:20,000) respectively. Image was developed using FeQ™ ECL Substrate Kit (Cat#226).

SUPPORT

SUPPORT@GENUINBIOTECH.COM
TEL: +1-540-855-7041

ORDERS

SALES@GENUINBIOTECH.COM
FAX: +1-540-855-7041

WWW.GENUINBIOTECH.COM