

Anti-ATM Serine/Threonine Kinase Recombinant Rabbit Monoclonal Antibody



Catalog #: 2914

Aliases

ATM; ATM Serine/Threonine Kinase; Ataxia Telangiectasia Mutated; TELO1; TEL; Serine-Protein Kinase ATM; A-T Mutated; EC 2.7.11.1; ATDC; ATA; ATC; ATD; Ataxia Telangiectasia Mutated (Includes Complementation Groups A, C And D; TEL1, Telomere Maintenance 1, Homolog (S. Cerevisiae); TEL1, Telomere Maintenance 1, Homolog; Serine/Threonine Kinase AT; AT Mutated; AT1; ATE

Background

Gene Name: ATM

NCBI Gene Entry: [472](#)

UniProt Entry: [Q13315](#)

Application Information

Molecular Weight: Predicted, 351 kDa; observed, 350 kDa

Clonality: Rabbit monoclonal antibody

Clone ID: 24GB3145

Species Reactivity: Human

Applications Tested: Western blotting (WB), flow cytometry (FCM), immunocytochemistry (IC)

Immunogen

A synthesized peptide derived from human ATM

Isotype

Rabbit IgG

Storage Buffer

Supplied in PBS (pH 7.4) containing 50% glycerol, and 0.02% sodium azide.

Storage

Store at -20 °C for one year.

Recommended Dilutions

Western Blotting (WB): 1:1,000-1:5,000

Flow Cytometry (FCM): 1:2,000

Immunocytochemistry (IC): 1:100-1:1,000

SUPPORT

SUPPORT@GENUINBIOTECH.COM
TEL: +1-540-855-7041

ORDERS

SALES@GENUINBIOTECH.COM
FAX: +1-540-855-7041

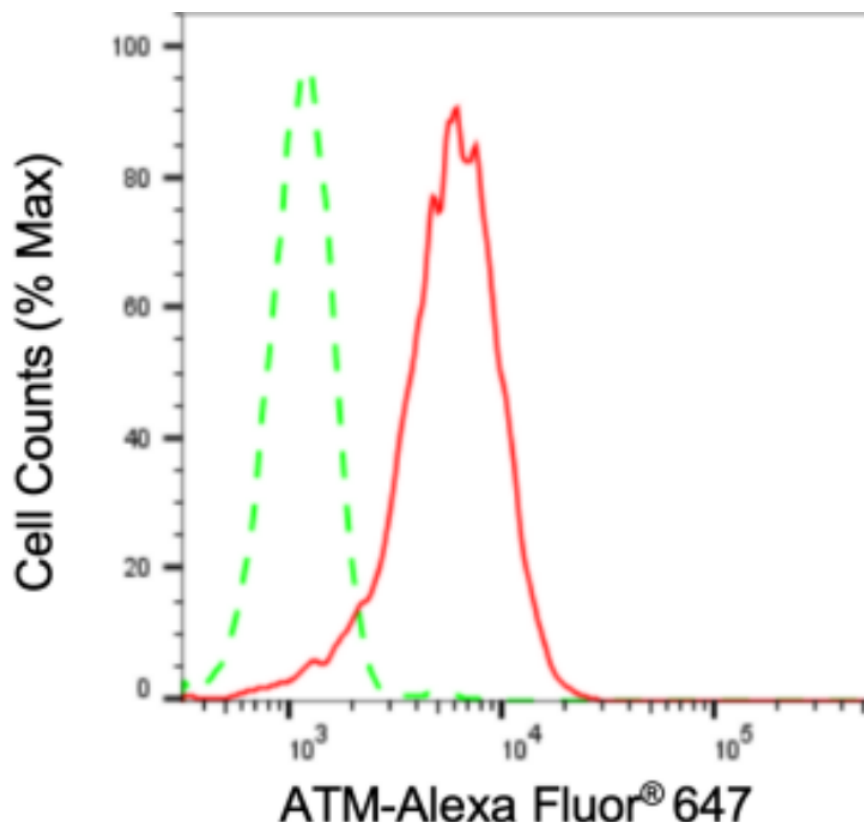
WWW.GENUINBIOTECH.COM

Anti-ATM Serine/Threonine Kinase Recombinant Rabbit Monoclonal Antibody

PAGE 2

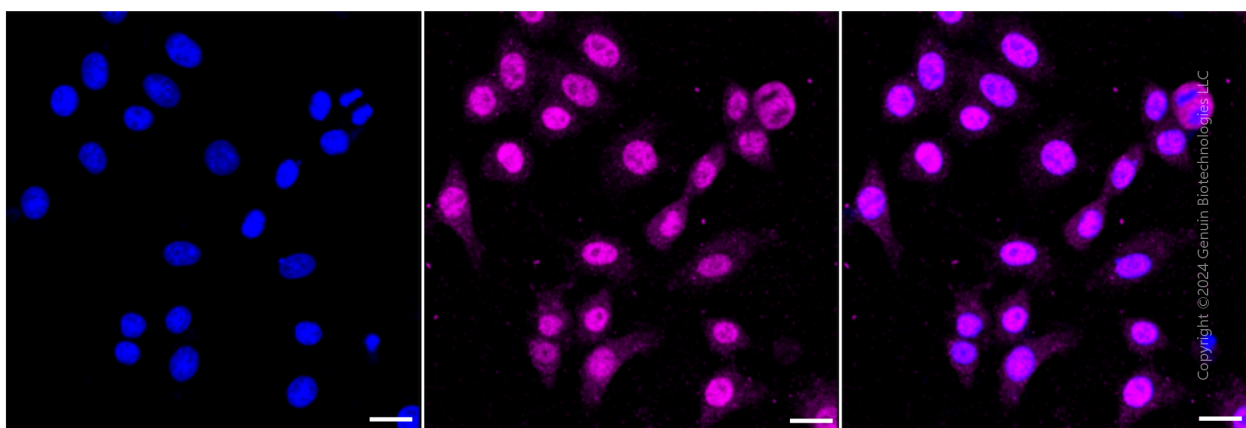
Note: This product is for research use only.

Validation Data



Copyright ©2024 Genuin Biotechnologies LLC

Flow cytometric analysis of ATM expression in HepG2 cells using anti-ATM antibody (Cat#2914, 1:2,000). Green, isotype control; red, ATM.



Copyright ©2024 Genuin Biotechnologies LLC

Immunocytochemical staining of HepG2 cells with anti-ATM antibody (Cat#2914, 1:1,000). Nuclei were stained blue with DAPI; ATM was stained magenta with Alexa Fluor® 647. Images were taken using leica stellaris 5. Protein abundance based on laser intensity and smart gain: Medium. Scale bar: 20 μm.

SUPPORT

SUPPORT@GENUINBIOTECH.COM
TEL: +1-540-855-7041

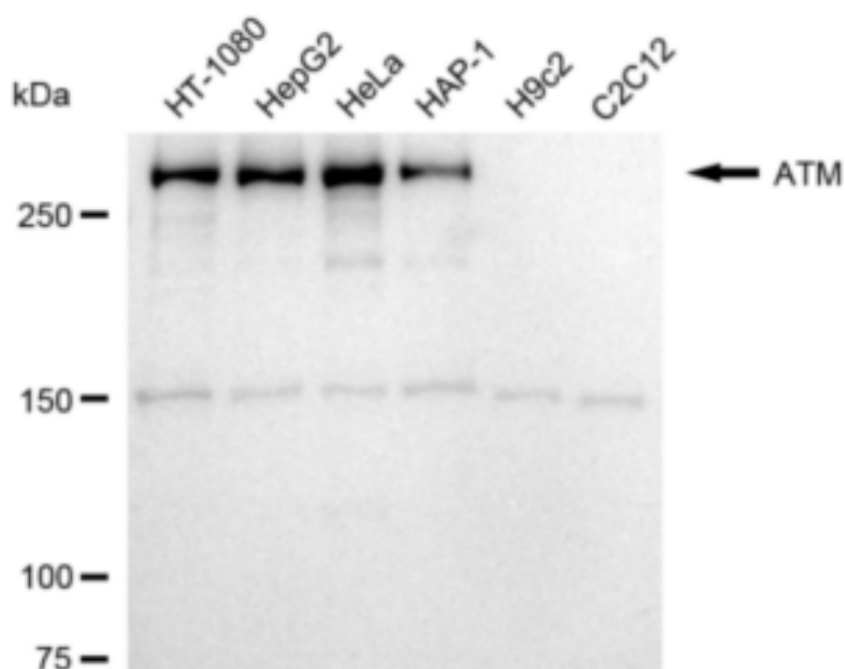
ORDERS

SALES@GENUINBIOTECH.COM
FAX: +1-540-855-7041

WWW.GENUINBIOTECH.COM

Anti-ATM Serine/Threonine Kinase Recombinant Rabbit Monoclonal Antibody

PAGE 3



Copyright ©2024 Genuin Biotechnologies LLC

Western blotting analysis using anti-ATM antibody (Cat#2914). Total cell lysates (30 µg) from various cell lines were loaded and separated by SDS-PAGE. The blot was incubated with anti-ATM antibody (Cat#2914, 1:5,000) and HRP-conjugated goat anti-rabbit secondary antibody (Cat#201, 1:20,000) respectively. Image was developed using FeQ™ ECL Substrate Kit (Cat#226).

SUPPORT

SUPPORT@GENUINBIOTECH.COM
TEL: +1-540-855-7041

ORDERS

SALES@GENUINBIOTECH.COM
FAX: +1-540-855-7041

WWW.GENUINBIOTECH.COM