

Anti-MET Recombinant Rabbit Monoclonal Antibody



Catalog #: 2916

Aliases

MET; MET Proto-Oncogene, Receptor Tyrosine Kinase; Hepatocyte Growth Factor Receptor; DFNB9; RCCP2; HGFR; Tyrosine-Protein Kinase Met; Scatter Factor Receptor; Proto-Oncogene C-Met; HGF/SF Receptor; HGF Receptor; SF Receptor; EC 2.7.10.1; Met Proto-Oncogene; EC 2.7.10; AUTS9; C-Met; DA11

Background

Gene Name: MET

NCBI Gene Entry: [4233](#)

UniProt Entry: [P08581](#)

Application Information

Molecular Weight: Predicted, 156 kDa; observed, 155 kDa

Clonality: Rabbit monoclonal antibody

Clone ID: 24GB3155

Species Reactivity: Human, mouse, rat

Applications Tested: Western blotting (WB), flow cytometry (FCM), immunocytochemistry (IC)

Immunogen

A synthesized peptide derived from human Met (c-Met)

Isotype

Rabbit IgG

Storage Buffer

Supplied in PBS (pH 7.4) containing 50% glycerol, and 0.02% sodium azide.

Storage

Store at -20 °C for one year.

Recommended Dilutions

Western Blotting (WB): 1:1,000-1:5,000

Flow Cytometry (FCM): 1:2,000

Immunocytochemistry (IC): 1:100-1:1,000

SUPPORT

SUPPORT@GENUINBIOTECH.COM
TEL: +1-540-855-7041

ORDERS

SALES@GENUINBIOTECH.COM
FAX: +1-540-855-7041

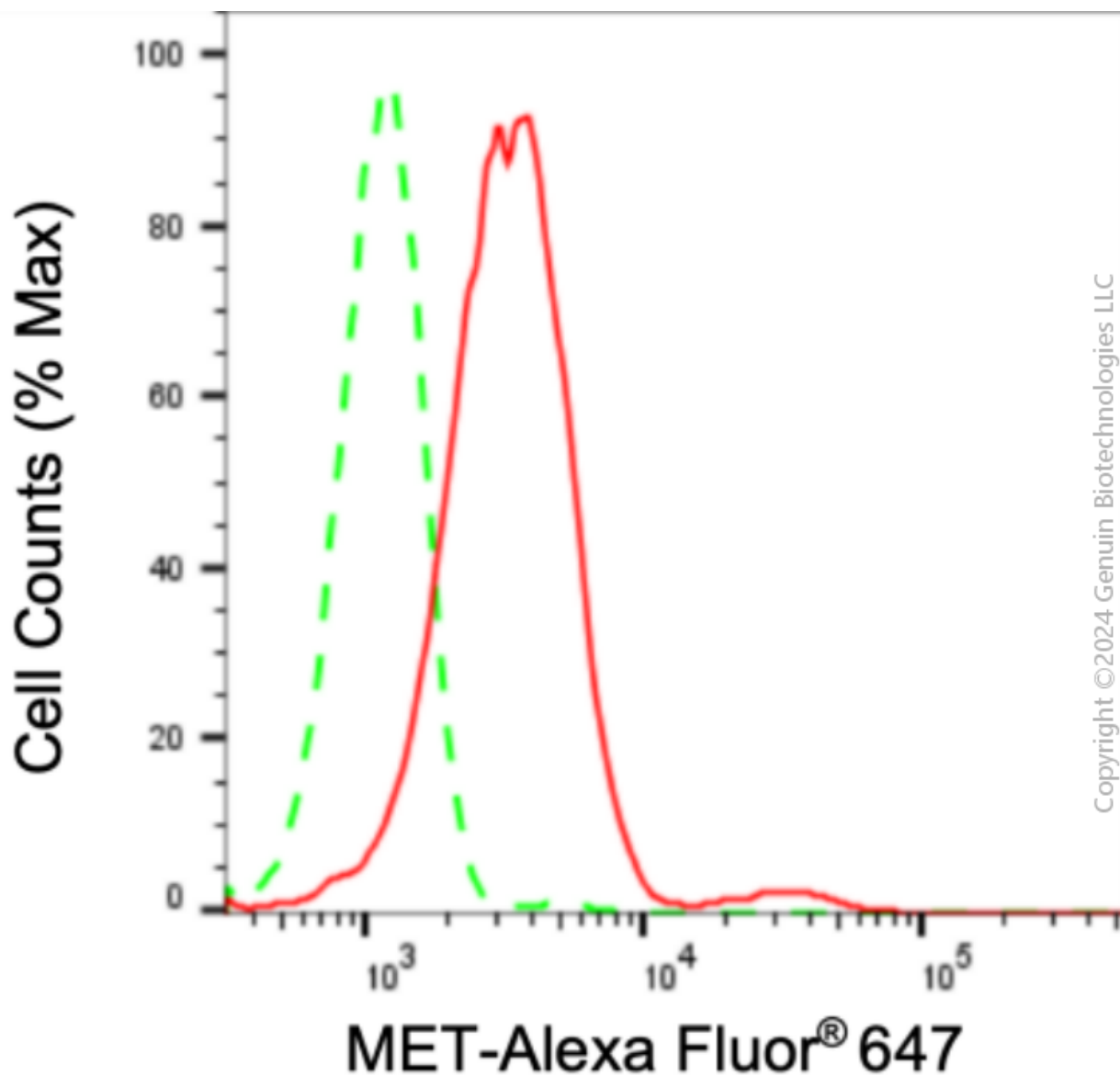
WWW.GENUINBIOTECH.COM

Anti-MET Recombinant Rabbit Monoclonal Antibody

PAGE 2

Note: This product is for research use only.

Validation Data



Flow cytometric analysis of MET expression in HepG2 cells using anti-MET antibody (Cat#2916, 1:2,000). Green, isotype control; red, MET.

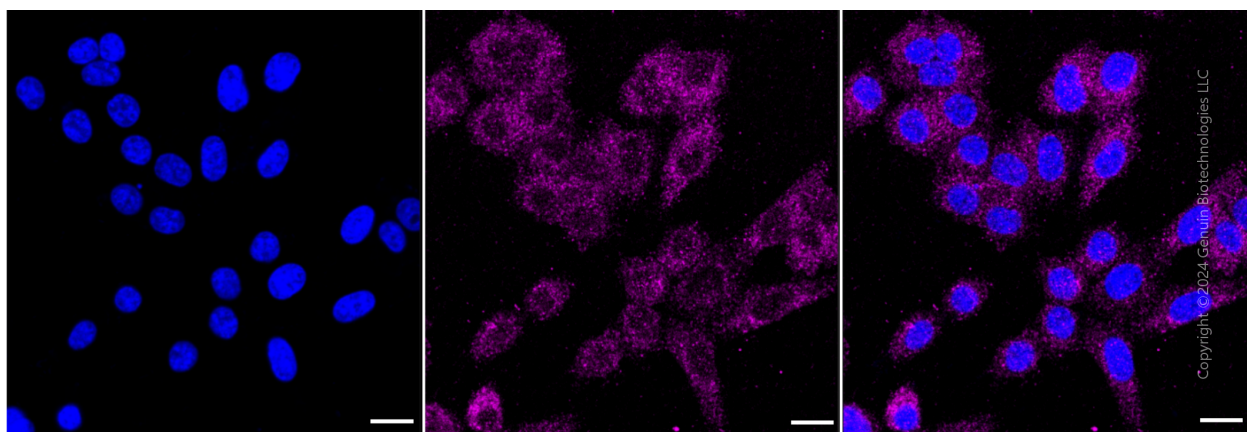
SUPPORT

SUPPORT@GENUINBIOTECH.COM
TEL: +1-540-855-7041

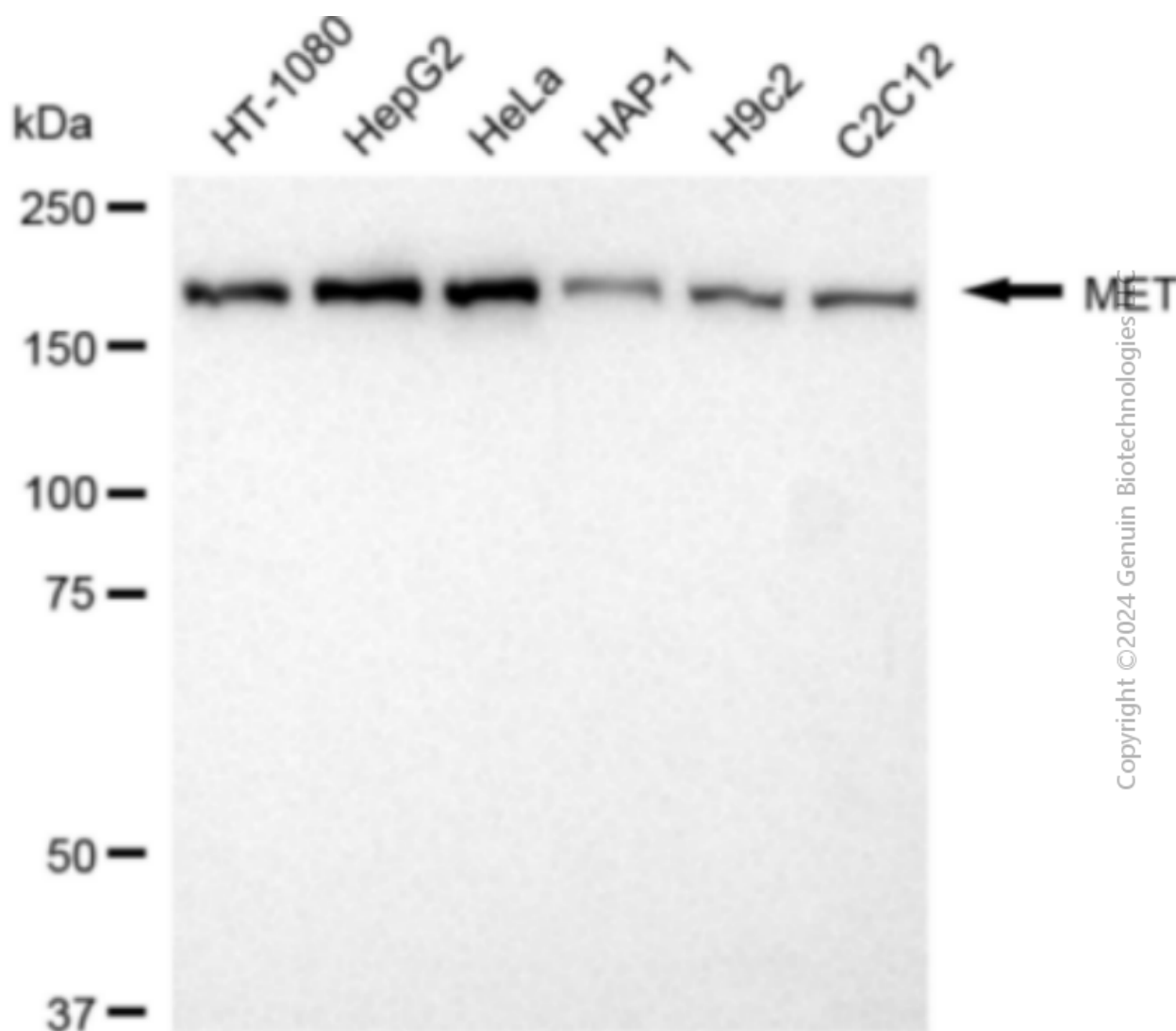
ORDERS

SALES@GENUINBIOTECH.COM
FAX: +1-540-855-7041

WWW.GENUINBIOTECH.COM



Immunocytochemical staining of HepG2 cells with anti-MET antibody (Cat#2916, 1:1,000). Nuclei were stained blue with DAPI; MET was stained magenta with Alexa Fluor® 647. Images were taken using Leica stellaris 5. Protein abundance based on laser Intensity and smart gain: Medium. Scale bar: 20 μ m.



Anti-MET Recombinant Rabbit Monoclonal Antibody

PAGE 4

Western blotting analysis using anti-MET antibody (Cat#2916). Total cell lysates (30 µg) from various cell lines were loaded and separated by SDS-PAGE. The blot was incubated with anti-MET antibody (Cat#2916, 1:5,000) and HRP-conjugated goat anti-rabbit secondary antibody (Cat#201, 1:20,000) respectively. Image was developed using FeQ™ ECL Substrate Kit (Cat#226).

SUPPORT

SUPPORT@GENUINBIOTECH.COM
TEL: +1-540-855-7041

ORDERS

SALES@GENUINBIOTECH.COM
FAX: +1-540-855-7041

WWW.GENUINBIOTECH.COM