

Anti-DOT1L Recombinant Rabbit Monoclonal Antibody



Catalog #: 2919

Aliases

DOT1L; DOT1 Like Histone Lysine Methyltransferase; KMT4; KIAA1814; Histone-Lysine N-Methyltransferase, H3 Lysine-79 Specific; Histone H3-K79 Methyltransferase; Histone Methyltransferase DOT1L; Lysine N-Methyltransferase 4; DOT1-Like Protein; H3-K79-HMTas; DOT1-Like, Histone H3 Methyltransferase (S. Cerevisiae); DOT1 Like Histone H3K79 Methyltransferase; DOT1-Like, Histone H3 Methyltransferase; DOT1-Like Histone Methyltransferase; EC 2.1.1.360

Background

Gene Name: DOT1L

NCBI Gene Entry: [84444](#)

UniProt Entry: [Q8TEK3](#)

Application Information

Molecular Weight: Predicted, 165 kDa; observed, 155 kDa

Clonality: Rabbit monoclonal antibody

Clone ID: 24GB3170

Species Reactivity: Human, mouse, rat

Applications Tested: Western blotting (WB), flow cytometry (FCM), immunocytochemistry (IC)

Immunogen

A synthesized peptide derived from human KMT4 / Dot1L

Isotype

Rabbit IgG

Storage Buffer

Supplied in PBS (pH 7.4) containing 50% glycerol, and 0.02% sodium azide.

Storage

Store at -20 °C for one year.

Recommended Dilutions

Western Blotting (WB): 1:1,000-1:5,000

Flow Cytometry (FCM): 1:2,000

Immunocytochemistry (IC): 1:100-1:1,000

SUPPORT

SUPPORT@GENUINBIOTECH.COM
TEL: +1-540-855-7041

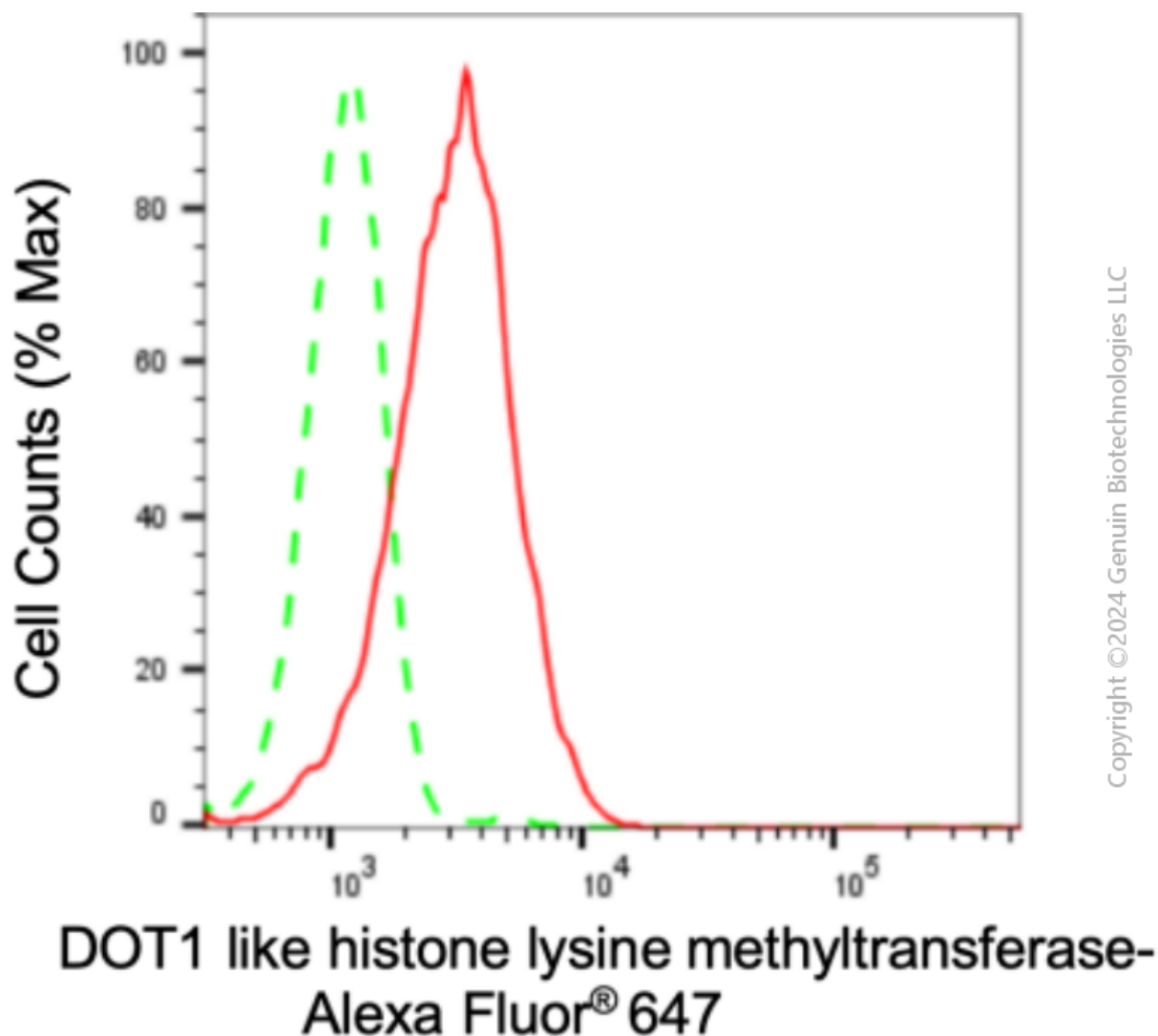
ORDERS

SALES@GENUINBIOTECH.COM
FAX: +1-540-855-7041

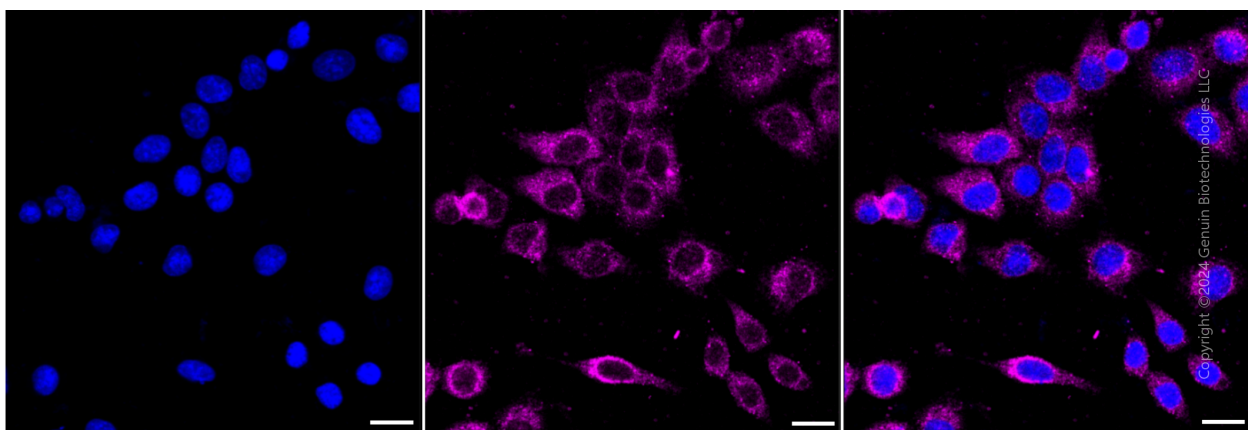
WWW.GENUINBIOTECH.COM

Note: This product is for research use only.

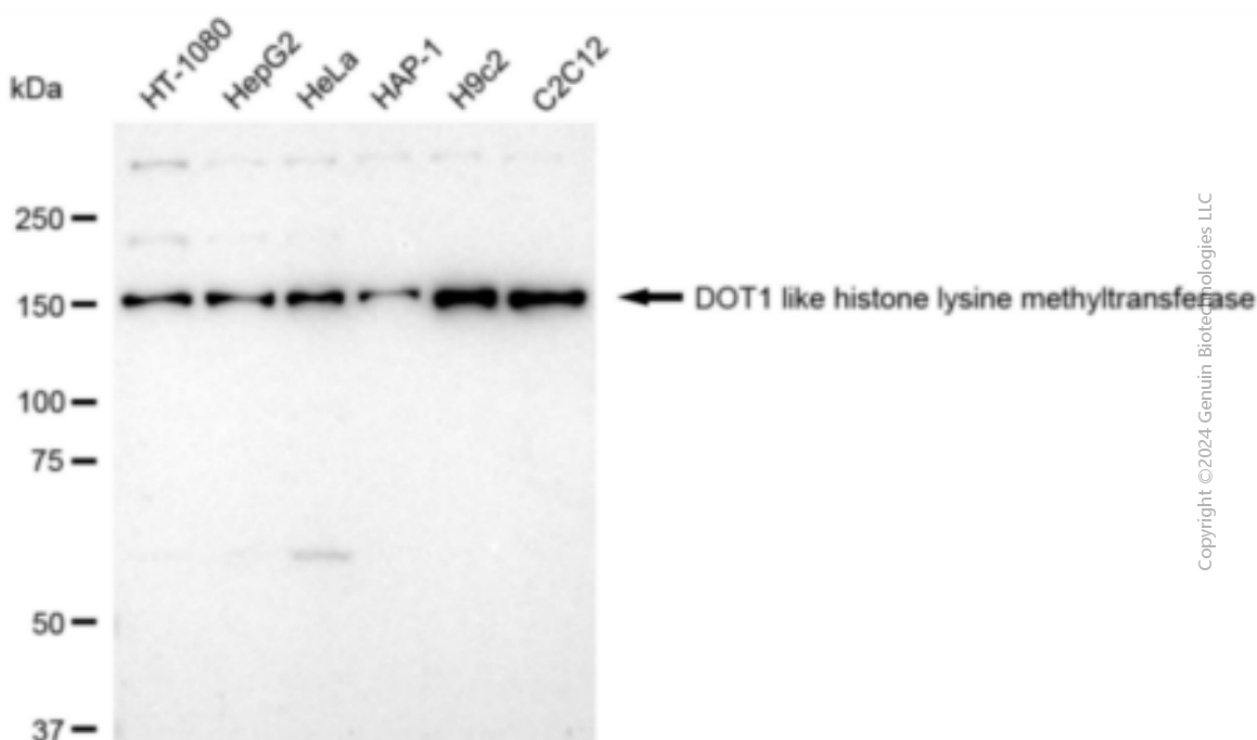
Validation Data



Flow cytometric analysis of DOT1 like histone lysine methyltransferase expression in HepG2 cells using anti-DOT1 like histone lysine methyltransferase antibody (Cat#2919, 1:2,000). Green, isotype control; red, DOT1 like histone lysine methyltransferase.



Immunocytochemical staining of HepG2 cells with anti-DOT1 like histone lysine methyltransferase antibody (Cat#2919, 1:1,000). Nuclei were stained blue with DAPI; DOT1 like histone lysine methyltransferase was stained magenta with Alexa Fluor® 647. Images were taken using Leica stellaris 5. Protein abundance based on laser Intensity and smart gain: Medium. Scale bar: 20 μ m.



Western blotting analysis using anti-DOT1 like histone lysine methyltransferase antibody (Cat#2919). Total cell lysates (30 μ g) from various cell lines were loaded and separated by SDS-PAGE. The blot was incubated with anti-DOT1 like histone lysine methyltransferase antibody (Cat#2919, 1:5,000) and HRP-conjugated goat anti-rabbit secondary antibody (Cat#201, 1:20,000) respectively. Image was developed using FeQ™ ECL Substrate Kit (Cat#226).