

Anti-MYB Recombinant Rabbit Monoclonal Antibody



Catalog #: 2920

Aliases

MYB; MYB Proto-Oncogene, Transcription Factor 2 3 5; C-Myb; V-Myb Avian Myeloblastosis Viral Oncogene Homolog; Transcriptional Activator Myb; Proto-Oncogene C-Myb; MYB-GATA1 Fusion Protein; Oncogene AMV; C-Myb_CDS; Cmyb; Efg

Background

Gene Name: MYB

NCBI Gene Entry: [4602](#)

UniProt Entry: [P10242](#)

Application Information

Molecular Weight: Predicted, 72 kDa; observed, 72,80 kDa

Clonality: Rabbit monoclonal antibody

Clone ID: 24GB3175

Species Reactivity: Human

Applications Tested: Western blotting (WB), immunocytochemistry (IC), flow cytometry (FCM)

Immunogen

A synthesized peptide derived from human Myb

Isotype

Rabbit IgG

Storage Buffer

Supplied in PBS (pH 7.4) containing 50% glycerol, and 0.02% sodium azide.

Storage

Store at -20 °C for one year.

Recommended Dilutions

Western Blotting (WB): 1:1,000-1:5,000

Immunocytochemistry (IC): 1:100-1:1,000

Flow Cytometry (FCM): 1:2,000

Note: This product is for research use only.

SUPPORT

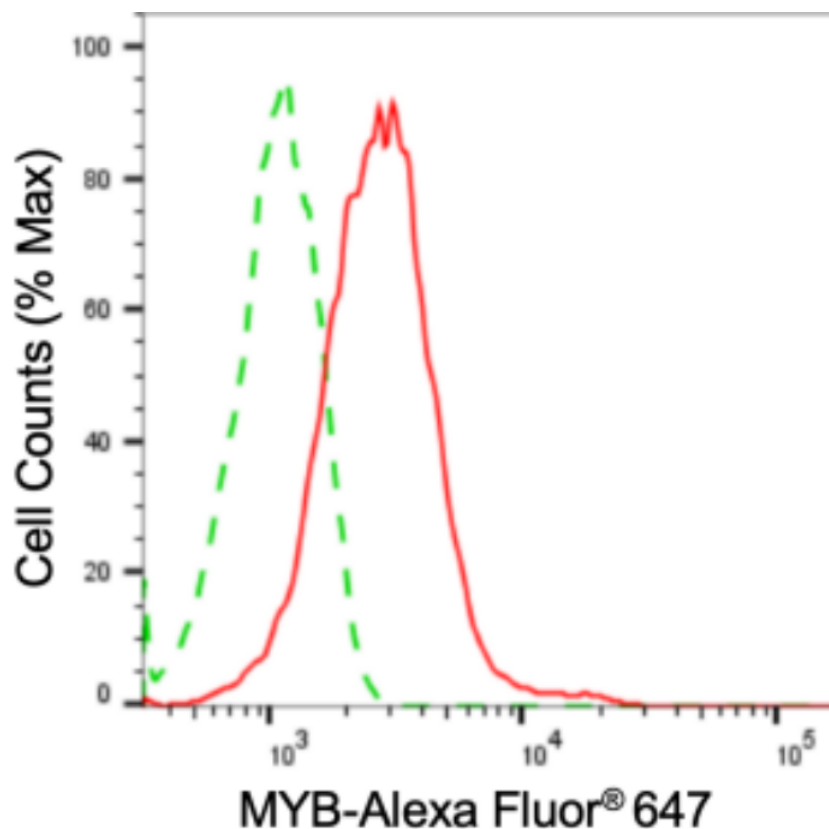
SUPPORT@GENUINBIOTECH.COM
TEL: +1-540-855-7041

ORDERS

SALES@GENUINBIOTECH.COM
FAX: +1-540-855-7041

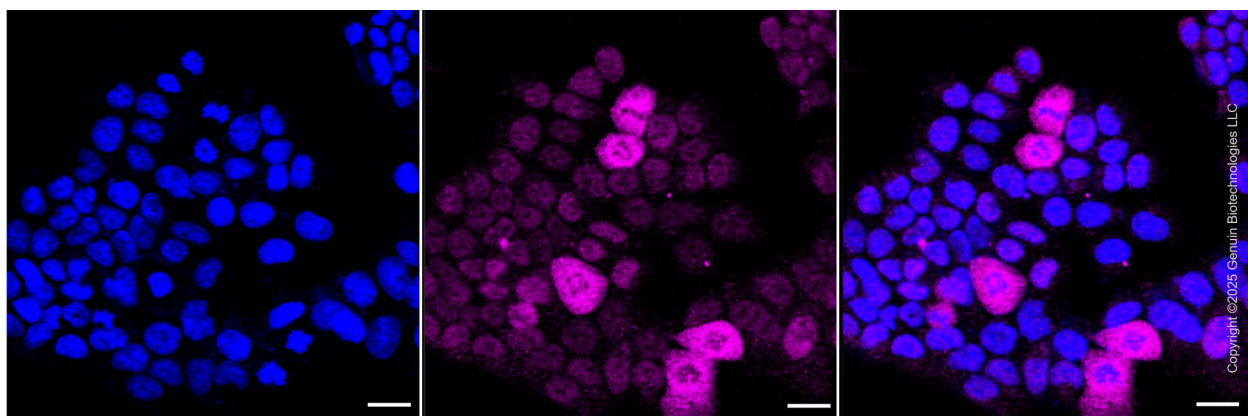
WWW.GENUINBIOTECH.COM

Validation Data



Copyright ©2024 Genuin Biotechnologies LLC

Flow cytometric analysis of MYB expression in HAP-1 cells using anti-MYB antibody (Cat#2920, 1:2,000). Green, isotype control; red, MYB.



Copyright ©2025 Genuin Biotechnologies LLC

Immunocytochemical staining of HAP-1 with anti-MYB antibody (Cat#2920, 1:1,000). Nuclei were stained blue with DAPI; MYB was stained magenta with Alexa Fluor® 647. Images were taken using Leica stellaris 5. Protein abundance based on laser Intensity and smart gain: Medium. Scale bar: 20 μm.

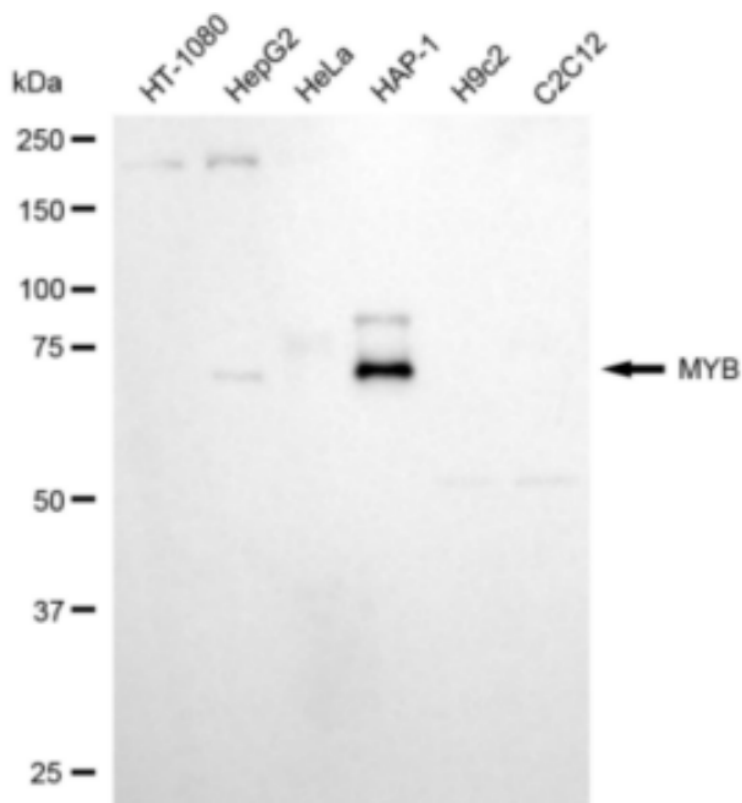
SUPPORT

SUPPORT@GENUINBIOTECH.COM
TEL: +1-540-855-7041

ORDERS

SALES@GENUINBIOTECH.COM
FAX: +1-540-855-7041

WWW.GENUINBIOTECH.COM



Copyright ©2024 Genuin Biotechnologies LLC

Western blotting analysis using anti-MYB antibody (Cat#2920). Total cell lysates (30 μ g) from various cell lines were loaded and separated by SDS-PAGE. The blot was incubated with anti-MYB antibody (Cat#2920, 1:5,000) and HRP-conjugated goat anti-rabbit secondary antibody (Cat#201, 1:20,000) respectively. Image was developed using FeQ™ ECL Substrate Kit (Cat#226).