

# Anti-Keratin 8 Recombinant Rabbit Monoclonal Antibody



**Catalog #: 2922**

## Aliases

KRT8; Keratin 8; CK-8; CYK8; K8; CARD2; K2C8; KO; Keratin, Type II Cytoskeletal 8; Type-II Keratin Kb8; Keratin 8, Type II; Keratin-8

## Background

Gene Name: KRT8

NCBI Gene Entry: [3856](#)

UniProt Entry: [P05787](#)

## Application Information

Molecular Weight: Predicted, 54 kDa; observed, 50 kDa

Clonality: Rabbit monoclonal antibody

Clone ID: 24GB3185

Species Reactivity: Human

Applications Tested: Western blotting (WB), flow cytometry (FCM), immunocytochemistry (IC)

## Immunogen

A synthesized peptide derived from human Cytokeratin 8

## Isotype

Rabbit IgG

## Storage Buffer

Supplied in PBS (pH 7.4) containing 50% glycerol, and 0.02% sodium azide.

## Storage

Store at -20 °C for one year.

## Recommended Dilutions

Western Blotting (WB): 1:4,000-1:20,000

Flow Cytometry (FCM): 1:2,000

Immunocytochemistry (IC): 1:100-1:1,000

**Note:** This product is for research use only.

## Validation Data

---

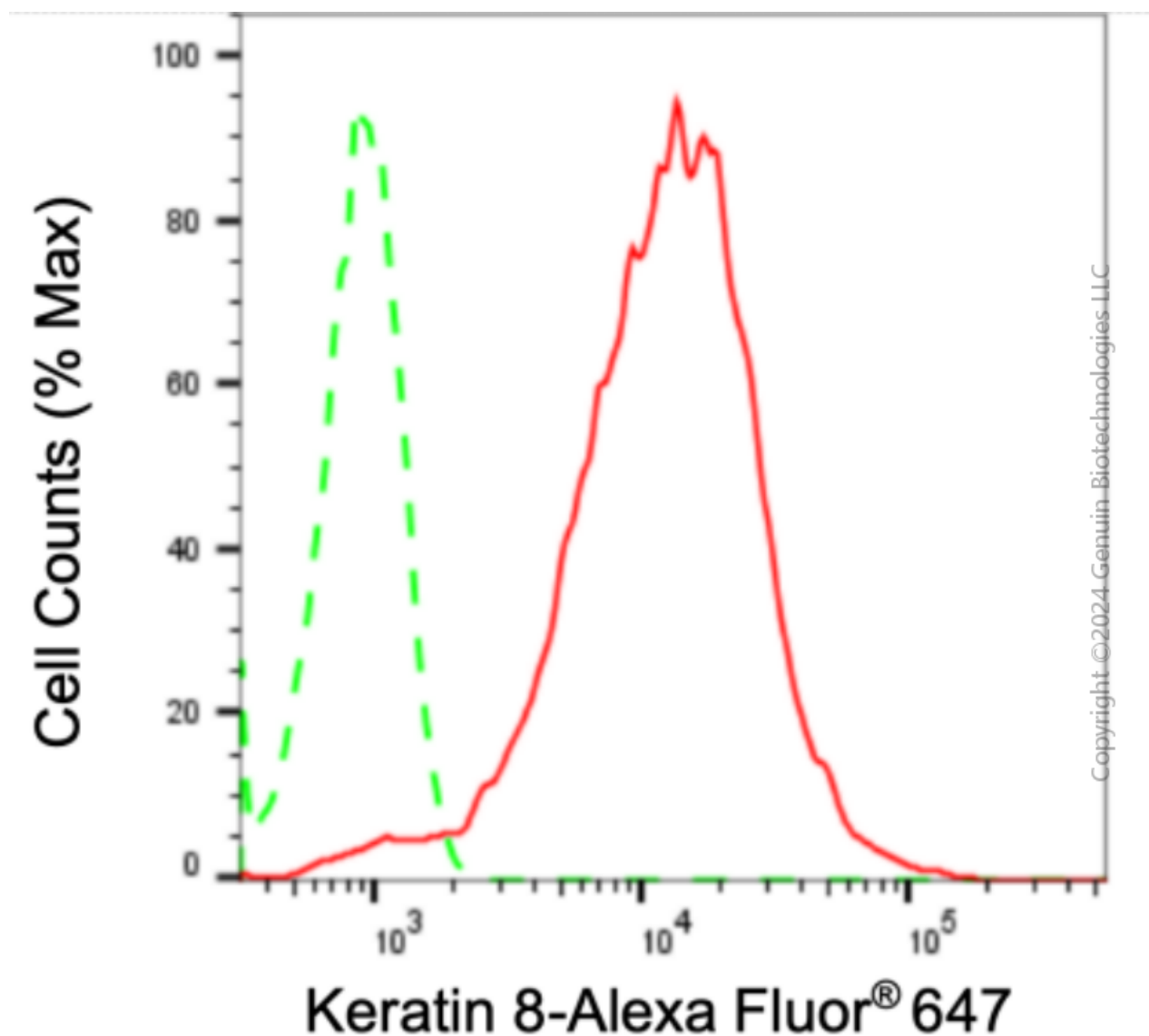
### SUPPORT

SUPPORT@GENUINBIOTECH.COM  
TEL: +1-540-855-7041

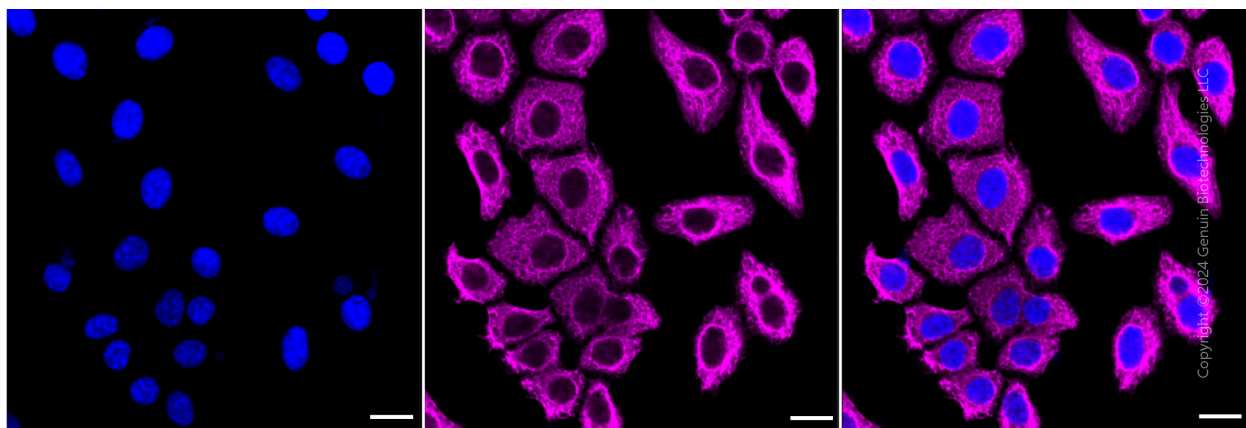
### ORDERS

SALES@GENUINBIOTECH.COM  
FAX: +1-540-855-7041

[WWW.GENUINBIOTECH.COM](http://WWW.GENUINBIOTECH.COM)



Flow cytometric analysis of Keratin 8 expression in HepG2 cells using anti-Keratin 8 antibody (Cat#2922, 1:2,000). Green, isotype control; red, Keratin 8.



Immunocytochemical staining of HepG2 cells with anti-Keratin 8 antibody (Cat#2922, 1:1,000).

**SUPPORT**

SUPPORT@GENUINBIOTECH.COM  
TEL: +1-540-855-7041

**ORDERS**

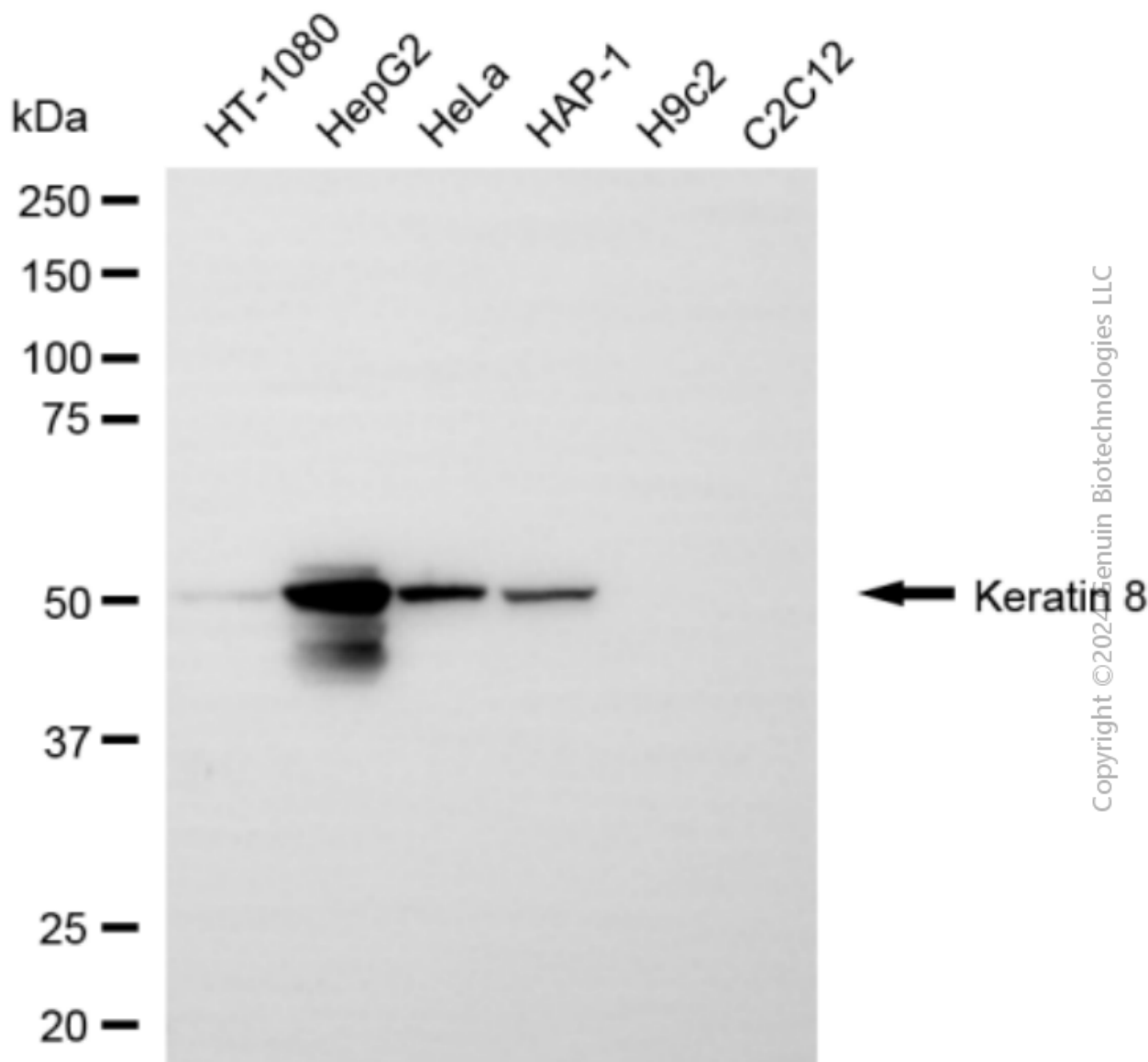
SALES@GENUINBIOTECH.COM  
FAX: +1-540-855-7041

**WWW.GENUINBIOTECH.COM**

## Anti-Keratin 8 Recombinant Rabbit Monoclonal Antibody

PAGE 3

Nuclei were stained blue with DAPI; Keratin 8 was stained magenta with Alexa Fluor® 647. Images were taken using Leica stellaris 5. Protein abundance based on laser Intensity and smart gain: High. Scale bar: 20  $\mu$ m.



Western blotting analysis using anti-Keratin 8 antibody (Cat#2922). Total cell lysates (30  $\mu$ g) from various cell lines were loaded and separated by SDS-PAGE. The blot was incubated with anti-Keratin 8 antibody (Cat#2922, 1:20,000) and HRP-conjugated goat anti-rabbit secondary antibody (Cat#201, 1:20,000) respectively. Image was developed using NaQ™ ECL Substrate Kit (Cat#716).

### SUPPORT

SUPPORT@GENUINBIOTECH.COM  
TEL: +1-540-855-7041

### ORDERS

SALES@GENUINBIOTECH.COM  
FAX: +1-540-855-7041

WWW.GENUINBIOTECH.COM