

Catalog #: 2926

Aliases

HSPA1A; Heat Shock Protein Family A (Hsp70) Member 1A; HSP70-1; HSPA1; Heat Shock 70 KDa Protein 1A; Heat Shock 70kDa Protein 1A; Heat Shock 70 KDa Protein 1; Heat Shock 70kD Protein 1A; HSP70.1; HSP72; Epididymis Secretory Sperm Binding Protein; DnaK-Type Molecular Chaperone HSP70-1; Epididymis Secretory Protein Li 103; Heat Shock 70 KDa Protein 1A/1B; Heat Shock 70 KDa Protein 1/2; Heat Shock 70 KDa Protein 1B; Heat Shock 70 KDa Protein 2; Heat Shock-Induced Protein; HSP70-1/HSP70-2; HSP70.1/HSP70.2; HEL-S-103; HSP70-1A; HSP70-2; HSP70.2; HSP70I; HSP70; HSX70

Background

Gene Name: HSPA1A

NCBI Gene Entry: [3303](#)

UniProt Entry: [P0DMV8](#)

Application Information

Molecular Weight: Predicted, 70 kDa; observed, 70 kDa

Clonality: Rabbit monoclonal antibody

Clone ID: 24GB3205

Species Reactivity: Human, mouse, rat

Applications Tested: Western blotting (WB), flow cytometry (FCM), immunocytochemistry (IC)

Immunogen

A synthesized peptide derived from human Hsp70

Isotype

Rabbit IgG

Storage Buffer

Supplied in PBS (pH 7.4) containing 50% glycerol, and 0.02% sodium azide.

Storage

Store at -20 °C for one year.

Recommended Dilutions

Western Blotting (WB): 1:1,000-1:5,000

Flow Cytometry (FCM): 1:2,000

SUPPORT

SUPPORT@GENUINBIOTECH.COM
TEL: +1-540-855-7041

ORDERS

SALES@GENUINBIOTECH.COM
FAX: +1-540-855-7041

WWW.GENUINBIOTECH.COM

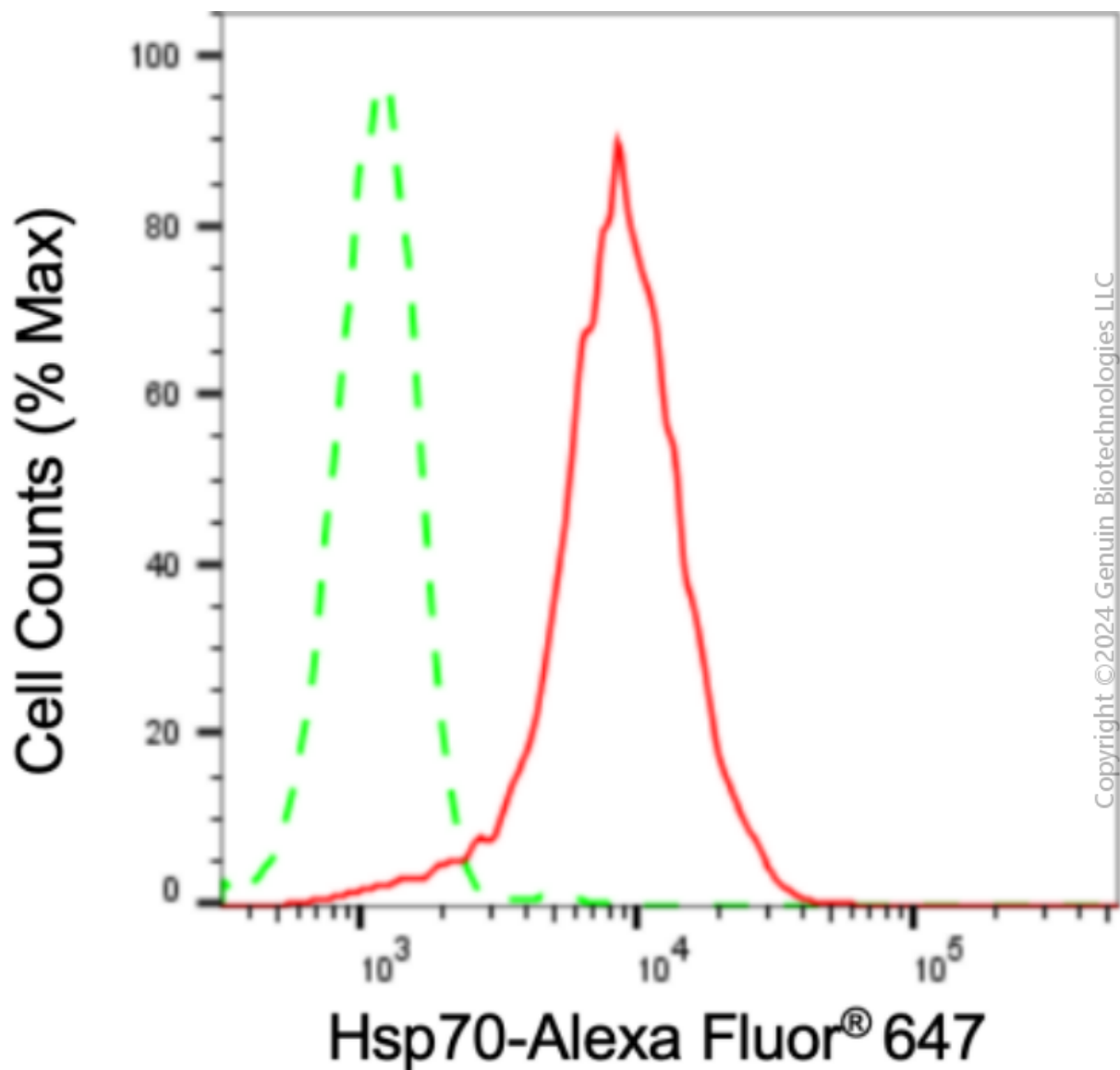
Anti-HSPA1A Recombinant Rabbit Monoclonal Antibody

PAGE 2

Immunocytochemistry (IC): 1:100-1:1,000

Note: This product is for research use only.

Validation Data



Flow cytometric analysis of Hsp70 expression in HepG2 cells using anti-Hsp70 antibody (Cat#2926, 1:2,000). Green, isotype control; red, Hsp70.

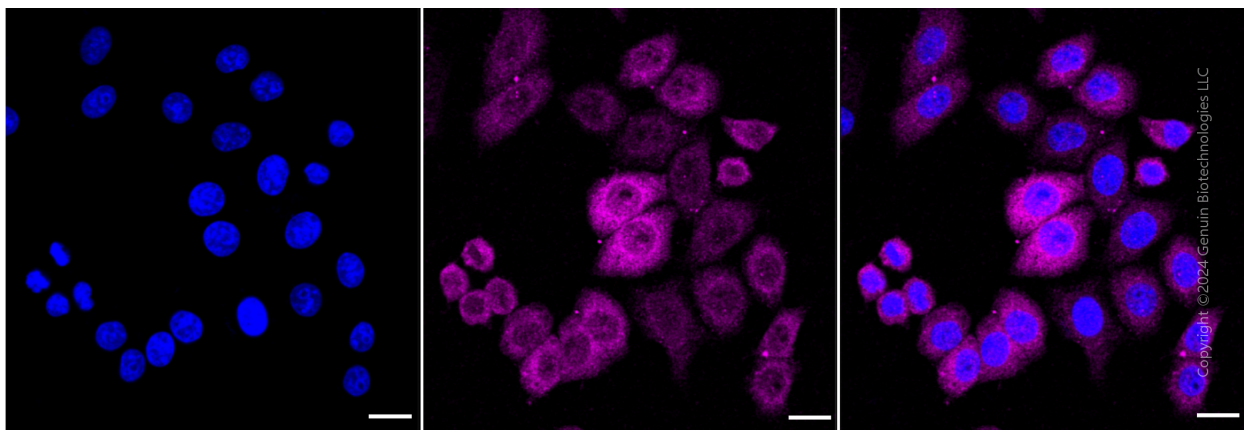
SUPPORT

SUPPORT@GENUINBIOTECH.COM
TEL: +1-540-855-7041

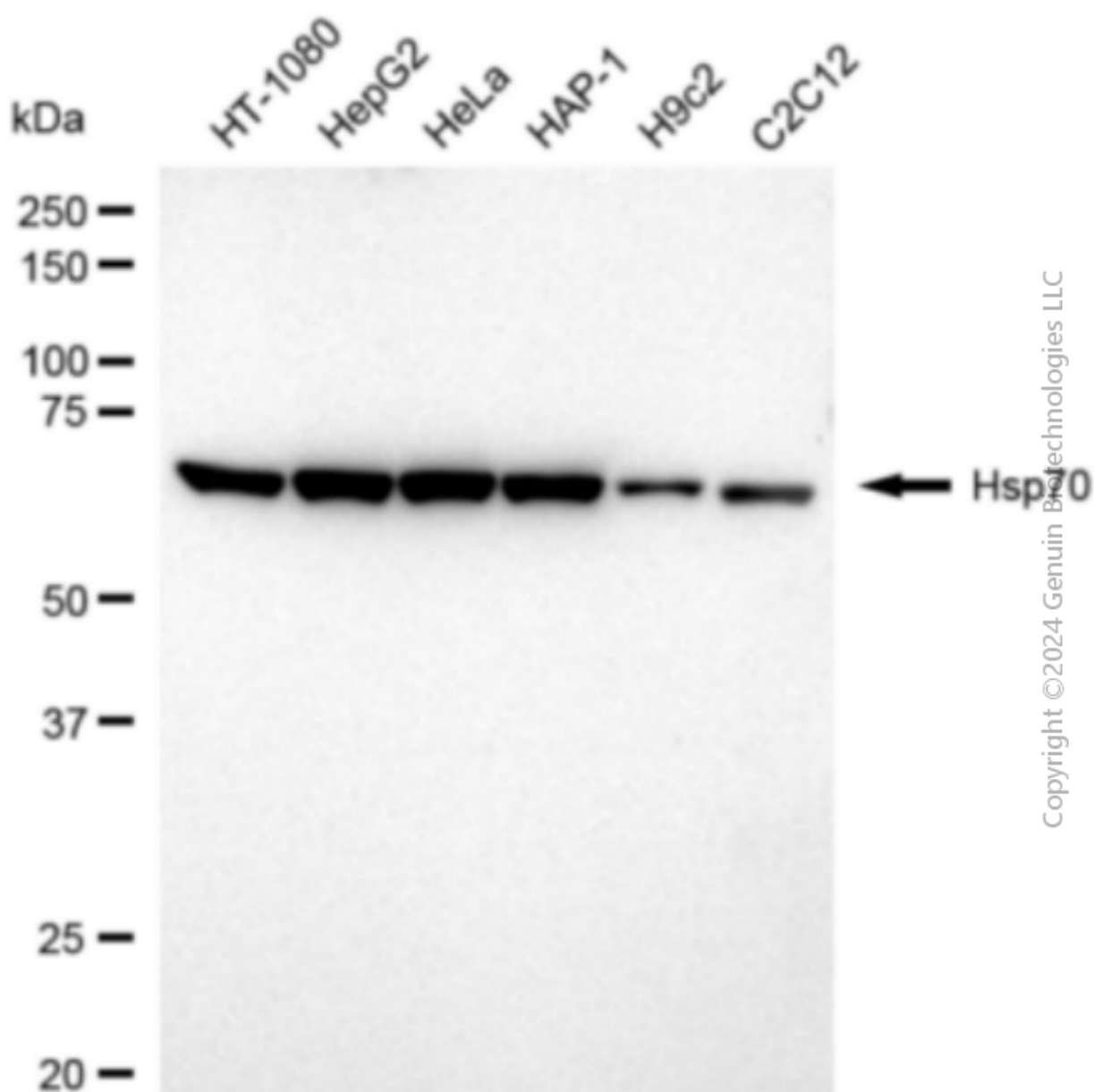
ORDERS

SALES@GENUINBIOTECH.COM
FAX: +1-540-855-7041

WWW.GENUINBIOTECH.COM



Immunocytochemical staining of HepG2 cells with anti-Hsp70 antibody (Cat#2926, 1:1,000). Nuclei were stained blue with DAPI; Hsp70 was stained magenta with Alexa Fluor® 647. Images were taken using Leica stellaris 5. Protein abundance based on laser Intensity and smart gain: Medium. Scale bar: 20 μ m.



Copyright ©2024 Genuin Biotechnologies LLC

Western blotting analysis using anti-Hsp70 antibody (Cat#2926). Total cell lysates (30 µg) from various cell lines were loaded and separated by SDS-PAGE. The blot was incubated with anti-Hsp70 antibody (Cat#2926, 1:5,000) and HRP-conjugated goat anti-rabbit secondary antibody (Cat#201, 1:20,000) respectively. Image was developed using FeQ™ ECL Substrate Kit (Cat#226).