

Anti-Apolipoprotein E Recombinant Rabbit Monoclonal Antibody



Catalog #: 2930

Aliases

APOE; Apolipoprotein E; AD2; Alzheimer Disease 2 (APOE*E4-Associated, Late Onset); Apolipoprotein E3; LDLQC5; APO-E; ApoE4; Apo-E; LPG

Background

Gene Name: APOE

NCBI Gene Entry: [348](#)

UniProt Entry: [P02649](#)

Application Information

Molecular Weight: Predicted, 36 kDa; observed, 35 kDa

Clonality: Rabbit monoclonal antibody

Clone ID: 24GB3225

Species Reactivity: Human

Applications Tested: Western blotting (WB), immunocytochemistry (IC)

Immunogen

A synthesized peptide derived from human Apolipoprotein E

Isotype

Rabbit IgG

Storage Buffer

Supplied in PBS (pH 7.4) containing 50% glycerol, and 0.02% sodium azide.

Storage

Store at -20 °C for one year.

Recommended Dilutions

Western Blotting (WB): 1:1,000-1:5,000

Immunocytochemistry (IC): 1:100-1:1,000

Note: This product is for research use only.

Validation Data

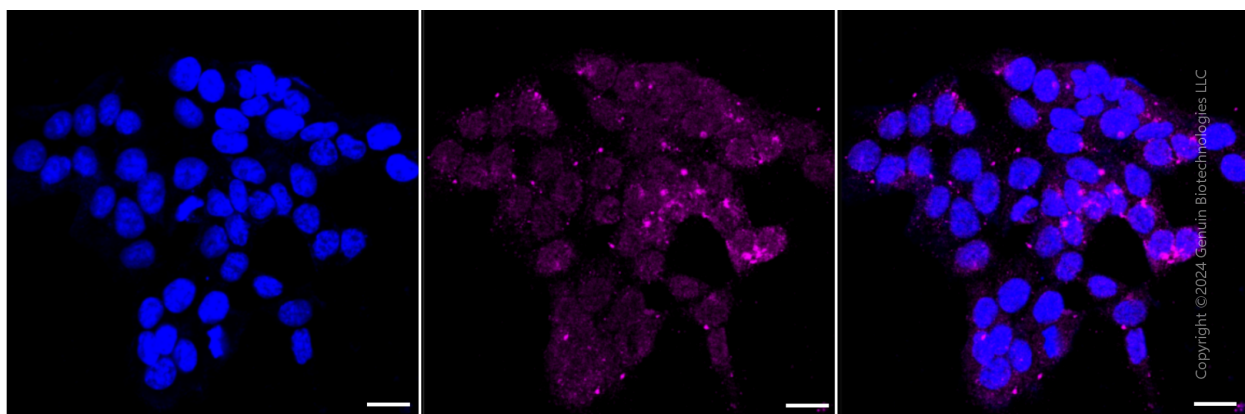
SUPPORT

SUPPORT@GENUINBIOTECH.COM
TEL: +1-540-855-7041

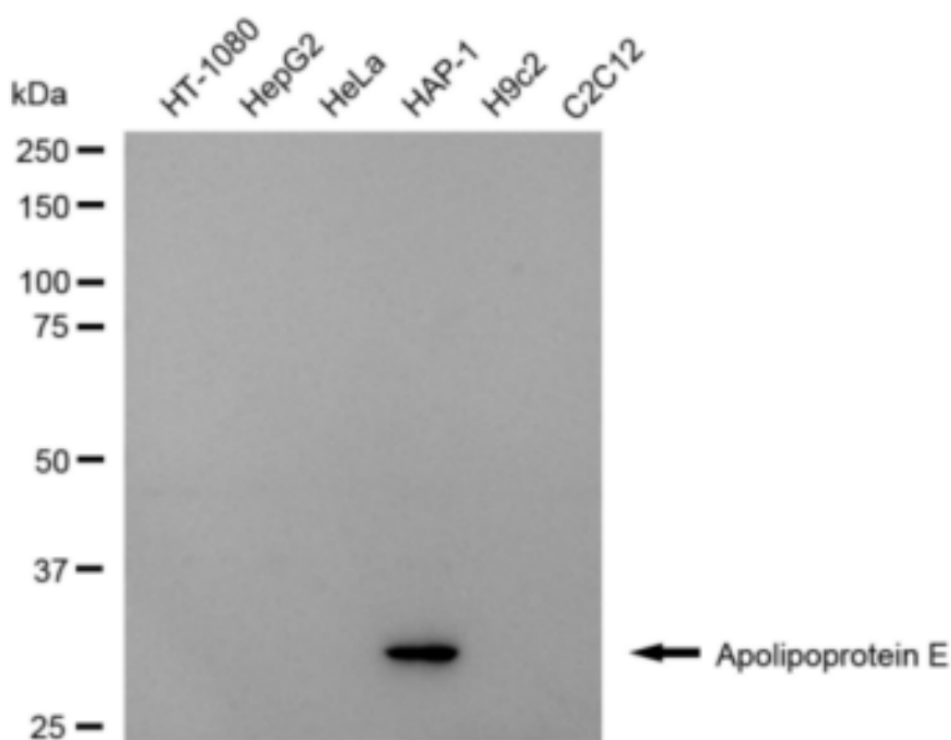
ORDERS

SALES@GENUINBIOTECH.COM
FAX: +1-540-855-7041

WWW.GENUINBIOTECH.COM



Immunocytochemical staining of HAP-1 with anti-apolipoprotein E antibody (Cat#2930, 1:1,000). Nuclei were stained blue with DAPI; Apolipoprotein E was stained magenta with Alexa Fluor® 647. Images were taken using Leica stellaris 5. Protein abundance based on laser Intensity and smart gain: Medium. Scale bar: 20 μ m.



Western blotting analysis using anti-Apolipoprotein E antibody (Cat#2930). Total cell lysates (30 μ g) from various cell lines were loaded and separated by SDS-PAGE. The blot was incubated with anti-Apolipoprotein E antibody (Cat#2930, 1:5,000) and HRP-conjugated goat anti-rabbit secondary antibody (Cat#201, 1:20,000) respectively. Image was developed using FeQ™ ECL Substrate Kit (Cat#226).