

# Anti-Acetyl-CoA Carboxylase Beta Recombinant Rabbit Monoclonal Antibody



**Catalog #: 2931**

## Aliases

ACACB; Acetyl-CoA Carboxylase Beta; ACC-Beta; ACC2; ACCB; Acetyl-CoA Carboxylase 2; ACACbeta; HACC275; ACCbeta; Acetyl-Coenzyme A Carboxylase Beta; EC 6.4.1.2

## Background

Gene Name: ACACB

NCBI Gene Entry: [32](#)

UniProt Entry: [O00763](#)

## Application Information

Molecular Weight: Predicted, 277 kDa; observed, 250 kDa

Clonality: Rabbit monoclonal antibody

Clone ID: 24GB3230

Species Reactivity: Human, mouse, rat

Applications Tested: Western blotting (WB), flow cytometry (FCM), immunocytochemistry (IC)

## Immunogen

A synthesized peptide derived from human Acetyl-CoA Carboxylase

## Isotype

Rabbit IgG

## Storage Buffer

Supplied in PBS (pH 7.4) containing 50% glycerol, and 0.02% sodium azide.

## Storage

Store at -20 °C for one year.

## Recommended Dilutions

Western Blotting (WB): 1:1,000-1:5,000

Flow Cytometry (FCM): 1:2,000

Immunocytochemistry (IC): 1:100-1:1,000

**Note:** This product is for research use only.

## Validation Data

---

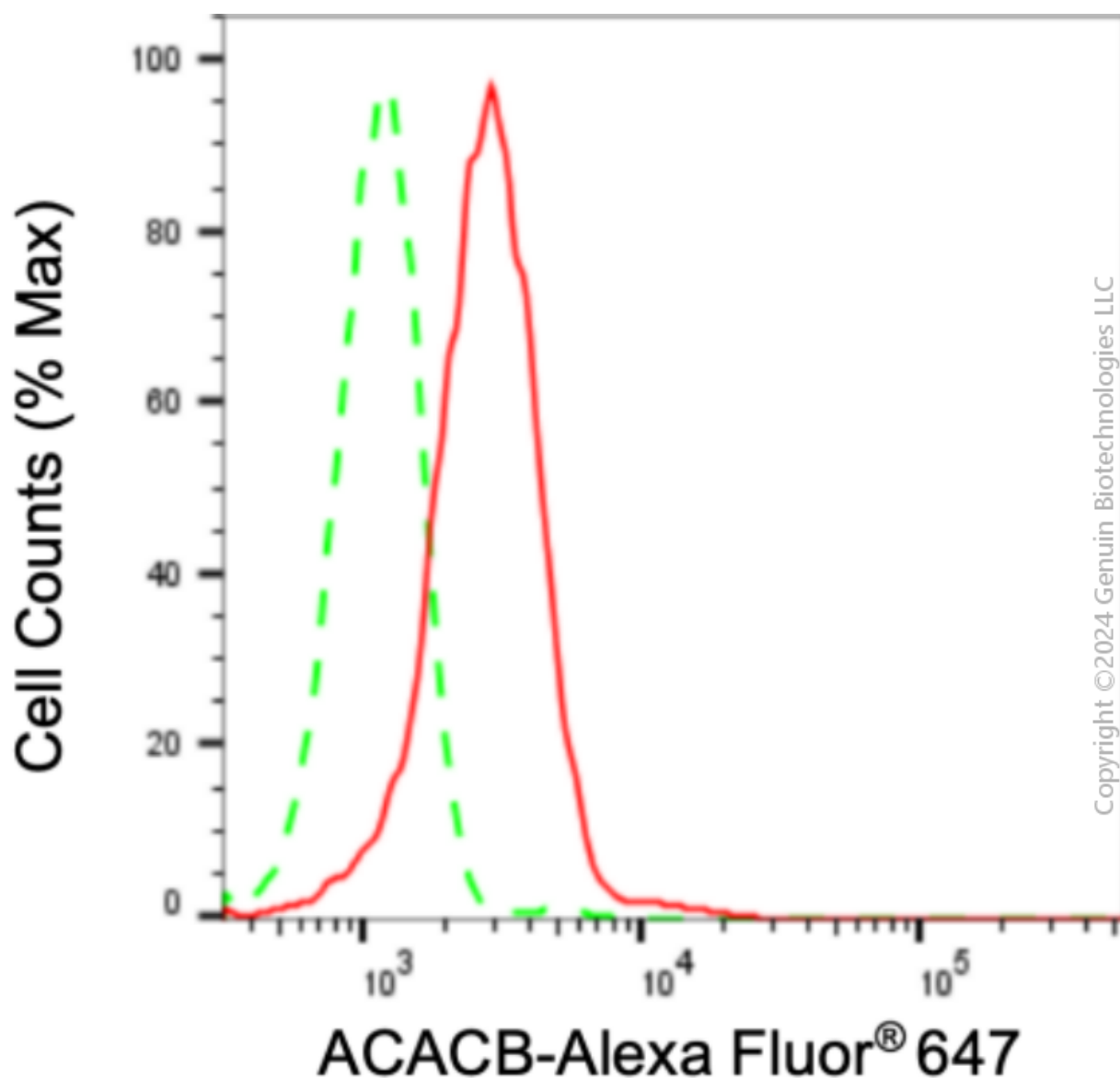
### SUPPORT

SUPPORT@GENUINBIOTECH.COM  
TEL: +1-540-855-7041

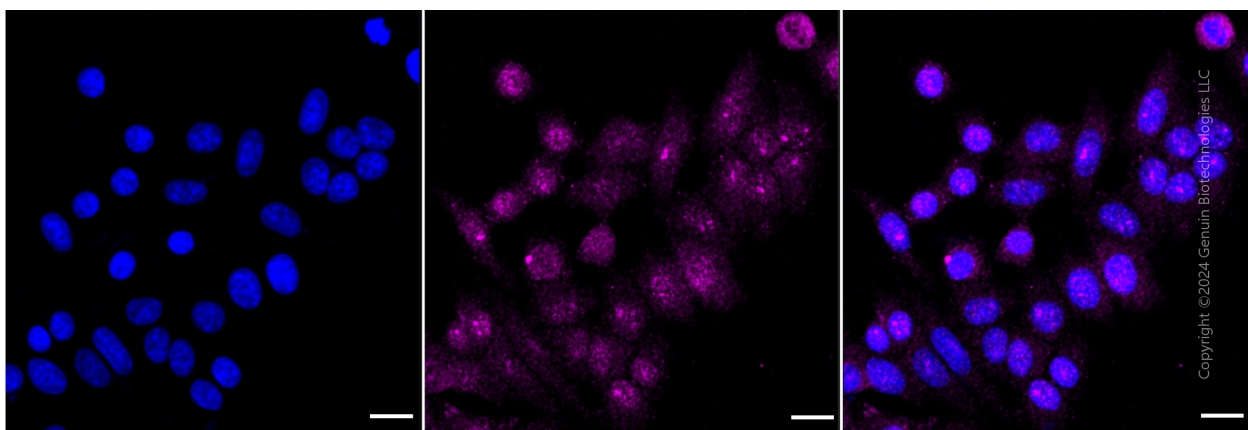
### ORDERS

SALES@GENUINBIOTECH.COM  
FAX: +1-540-855-7041

[WWW.GENUINBIOTECH.COM](http://WWW.GENUINBIOTECH.COM)



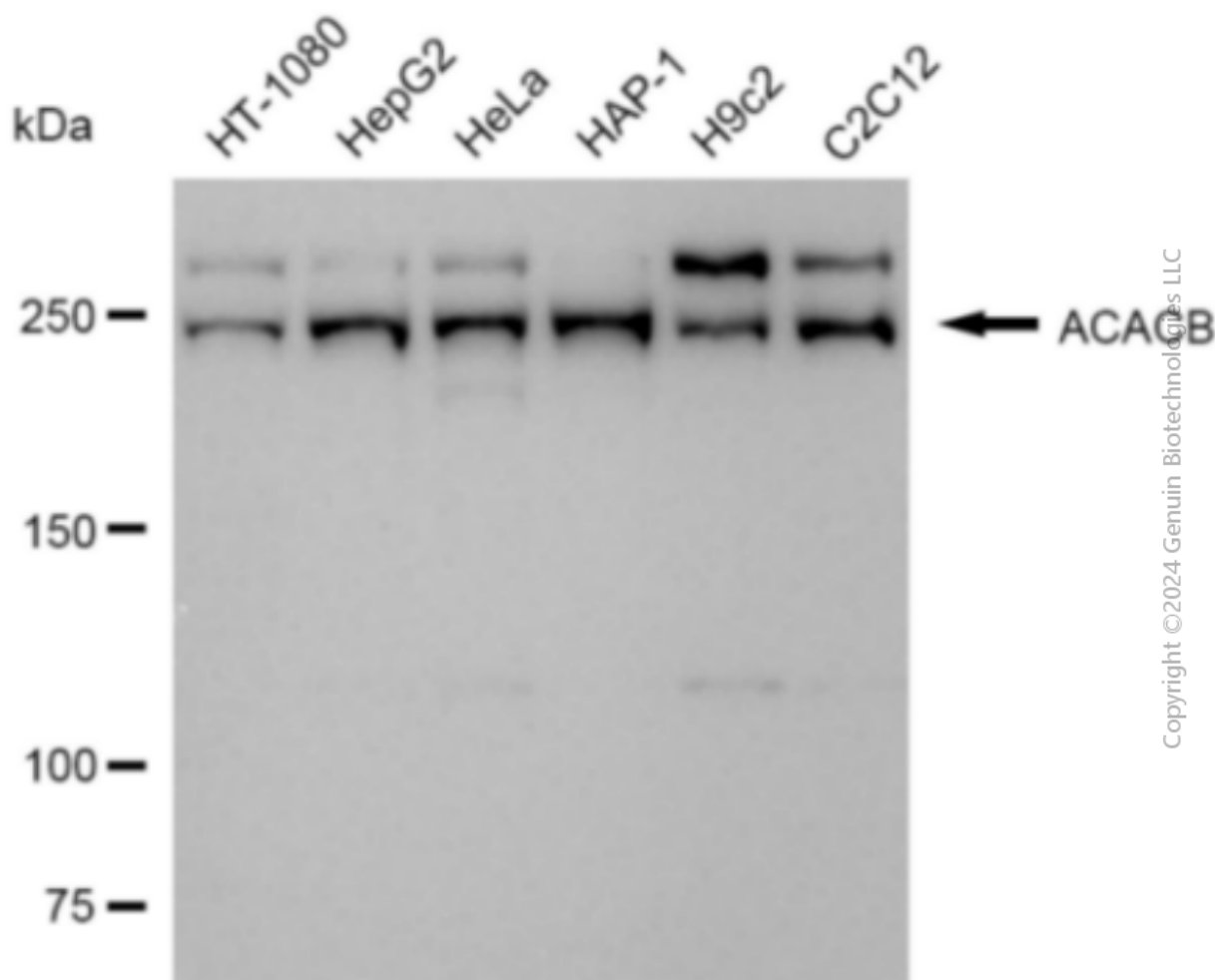
Flow cytometric analysis of ACACB expression in HepG2 cells using anti-ACACB antibody (Cat#2931, 1:2,000). Green, isotype control; red, ACACB.



## Anti-Acetyl-CoA Carboxylase Beta Recombinant Rabbit Monoclonal Antibody

PAGE 3

Immunocytochemical staining of HepG2 cells with anti-ACACB alpha (Ser51) antibody (Cat#2931, 1:1,000). Nuclei were stained blue with DAPI; ACACB was stained magenta with Alexa Fluor® 647. Images were taken using Leica stellaris 5. Protein abundance based on laser Intensity and smart gain: Medium. Scale bar: 20  $\mu$ m.



Western blotting analysis using anti-ACACB antibody (Cat#2931). Total cell lysates (30  $\mu$ g) from various cell lines were loaded and separated by SDS-PAGE. The blot was incubated with anti-ACACB antibody (Cat#2931, 1:5,000) and HRP-conjugated goat anti-rabbit secondary antibody (Cat#201, 1:20,000) respectively. Image was developed using FeQ™ ECL Substrate Kit (Cat#226).

### SUPPORT

SUPPORT@GENUINBIOTECH.COM  
TEL: +1-540-855-7041

### ORDERS

SALES@GENUINBIOTECH.COM  
FAX: +1-540-855-7041

WWW.GENUINBIOTECH.COM