

Anti-Dysferlin Recombinant Rabbit Monoclonal Antibody



Catalog #: 2933

Aliases

DYSF; Dysferlin; FER1L1; Limb Girdle Muscular Dystrophy 2B (Autosomal Recessive); Fer-1-Like Family Member 1; Fer-1-Like Protein 1; LGMD2B; Dystrophy-Associated Fer-1-Like Protein; Dystrophy-Associated Fer-1-Like 1; LGMDR2; MMD1

Background

Gene Name: DYSF

NCBI Gene Entry: [8291](#)

UniProt Entry: [O75923](#)

Application Information

Molecular Weight: Predicted, 237 kDa; observed, 250 kDa

Clonality: Rabbit monoclonal antibody

Clone ID: 24GB3235

Species Reactivity: Human, mouse

Applications Tested: Western blotting (WB), flow cytometry (FCM), immunocytochemistry (IC)

Immunogen

A synthesized peptide derived from human Dysferlin

Isotype

Rabbit IgG

Storage Buffer

Supplied in PBS (pH 7.4) containing 50% glycerol, and 0.02% sodium azide.

Storage

Store at -20 °C for one year.

Recommended Dilutions

Western Blotting (WB): 1:1,000-1:5,000

Flow Cytometry (FCM): 1:2,000

Immunocytochemistry (IC): 1:100-1:1,000

Note: This product is for research use only.

SUPPORT

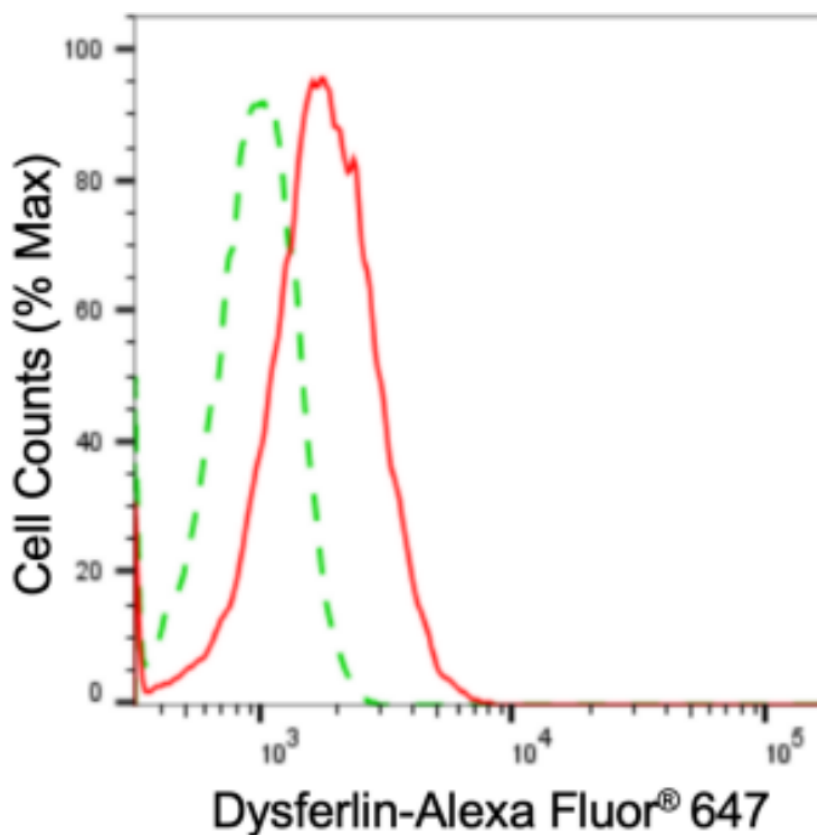
SUPPORT@GENUINBIOTECH.COM
TEL: +1-540-855-7041

ORDERS

SALES@GENUINBIOTECH.COM
FAX: +1-540-855-7041

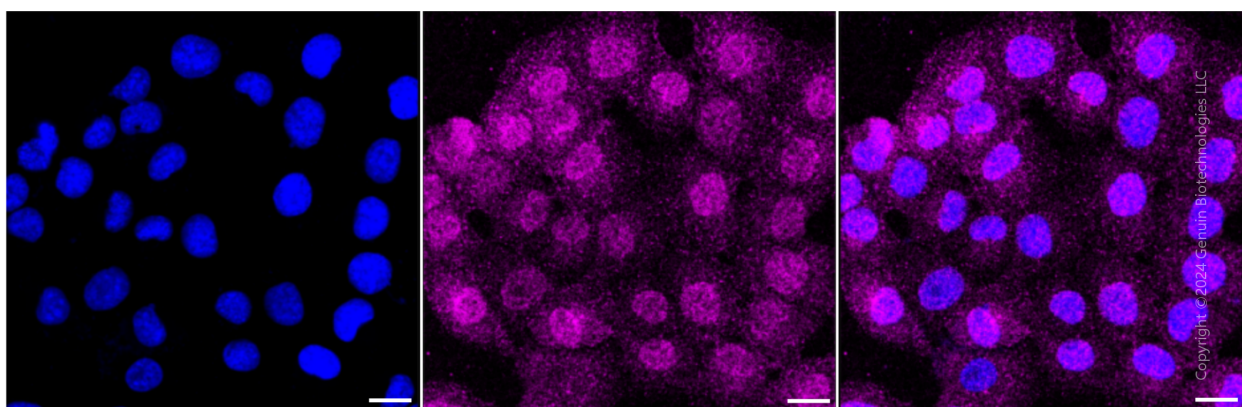
WWW.GENUINBIOTECH.COM

Validation Data



Copyright ©2024 Genuin Biotechnologies LLC

Flow cytometric analysis of Dysferlin expression in HT-1080 cells using anti-Dysferlin antibody (Cat#2933, 1:2,000). Green, isotype control; red, Dysferlin.



Copyright ©2024 Genuin Biotechnologies LLC

Immunocytochemical staining of HT-1080 cells with anti-Dysferlin antibody (Cat#2933, 1:1,000). Nuclei were stained blue with DAPI; Dysferlin was stained magenta with Alexa Fluor® 647. Images were taken using leica stellaris 5. Protein abundance based on laser intensity and smart gain: Low. Scale bar: 20 μm.

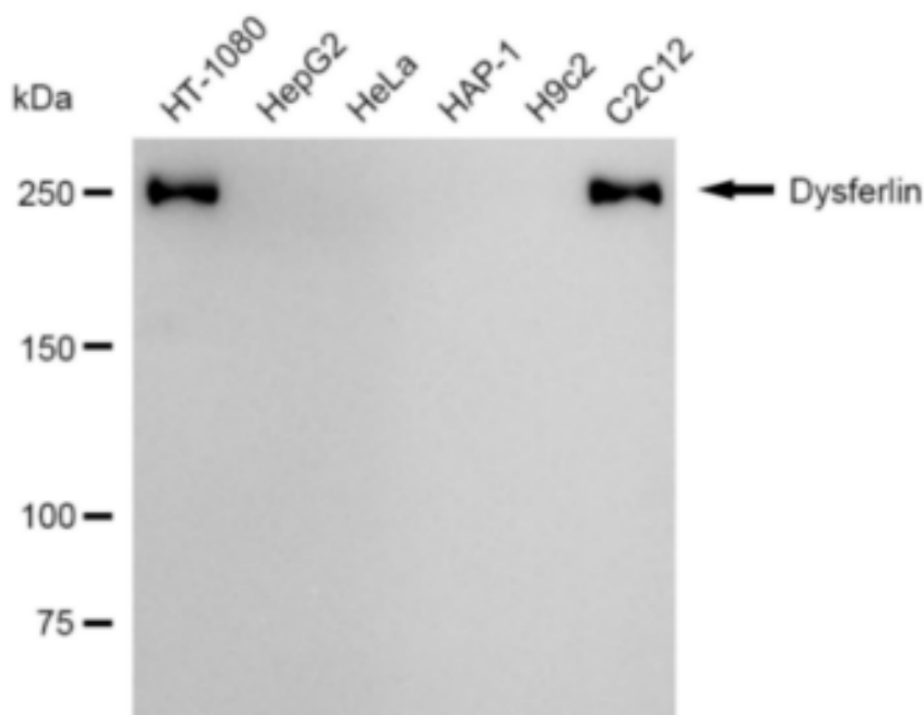
SUPPORT

SUPPORT@GENUINBIOTECH.COM
TEL: +1-540-855-7041

ORDERS

SALES@GENUINBIOTECH.COM
FAX: +1-540-855-7041

WWW.GENUINBIOTECH.COM



Copyright ©2024 Genuin Biotechnologies LLC

Western blotting analysis using anti-Dysferlin antibody (Cat#2933). Total cell lysates (30 μ g) from various cell lines were loaded and separated by SDS-PAGE. The blot was incubated with anti-Dysferlin antibody (Cat#2933, 1:5,000) and HRP-conjugated goat anti-rabbit secondary antibody (Cat#201, 1:20,000) respectively. Image was developed using FeQ™ ECL Substrate Kit (Cat#226).