

Anti-APC Recombinant Rabbit Monoclonal Antibody



Catalog #: 2938

Aliases

APC; APC Regulator Of WNT Signaling Pathway; DP2.5; PPP1R46; DP2; DP3; Protein Phosphatase 1, Regulatory Subunit 46; APC, WNT Signaling Pathway Regulator; Adenomatous Polyposis Coli Protein; Deleted In Polyposis 2.5; Adenomatosis Polyposis Coli Tumor Suppressor; Epididymis Secretory Sperm Binding Protein; Adenomatous Polyposis Coli (APC); WNT Signaling Pathway Regulator; Adenomatosis Polyposis Coli; Adenomatous Polyposis Coli; Protein APC; BTPS2; DESMD; GS

Background

Gene Name: APC

NCBI Gene Entry: [324](#)

UniProt Entry: [P25054](#)

Application Information

Molecular Weight: Predicted, 312 kDa; observed, 160 kDa

Clonality: Rabbit monoclonal antibody

Clone ID: 24GB3260

Species Reactivity: Human, mouse, rat

Applications Tested: Western blotting (WB), flow cytometry (FCM), immunocytochemistry (IC)

Immunogen

A synthesized peptide derived from human APC

Isotype

Rabbit IgG

Storage Buffer

Supplied in PBS (pH 7.4) containing 50% glycerol, and 0.02% sodium azide.

Storage

Store at -20 °C for one year.

Recommended Dilutions

Western Blotting (WB): 1:1,000-1:5,000

Flow Cytometry (FCM): 1:2,000

Immunocytochemistry (IC): 1:100-1:1,000

SUPPORT

SUPPORT@GENUINBIOTECH.COM
TEL: +1-540-855-7041

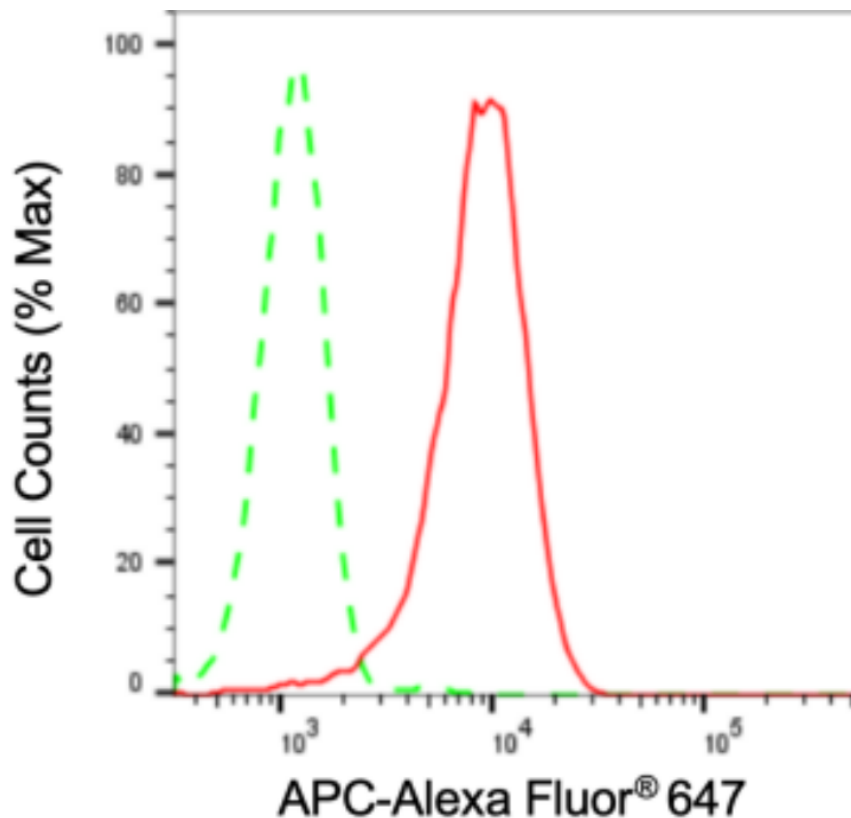
ORDERS

SALES@GENUINBIOTECH.COM
FAX: +1-540-855-7041

WWW.GENUINBIOTECH.COM

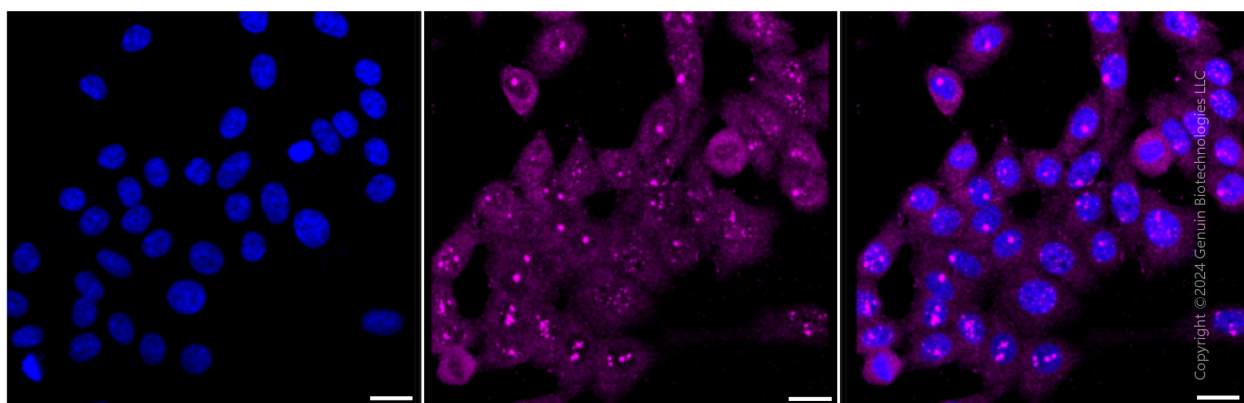
Note: This product is for research use only.

Validation Data



Copyright ©2024 Genuin Biotechnologies LLC

Flow cytometric analysis of APC expression in HepG2 cells using anti-APC antibody (Cat#2938, 1:2,000). Green, isotype control; red, APC.



Copyright ©2024 Genuin Biotechnologies LLC

Immunocytochemical staining of HepG2 cells with anti-APC antibody (Cat#2938, 1:1,000). Nuclei were stained blue with DAPI; APC was stained magenta with Alexa Fluor® 647. Images were taken using Leica stellaris 5. Protein abundance based on laser Intensity and smart gain: Medium. Scale bar: 20 μ m.

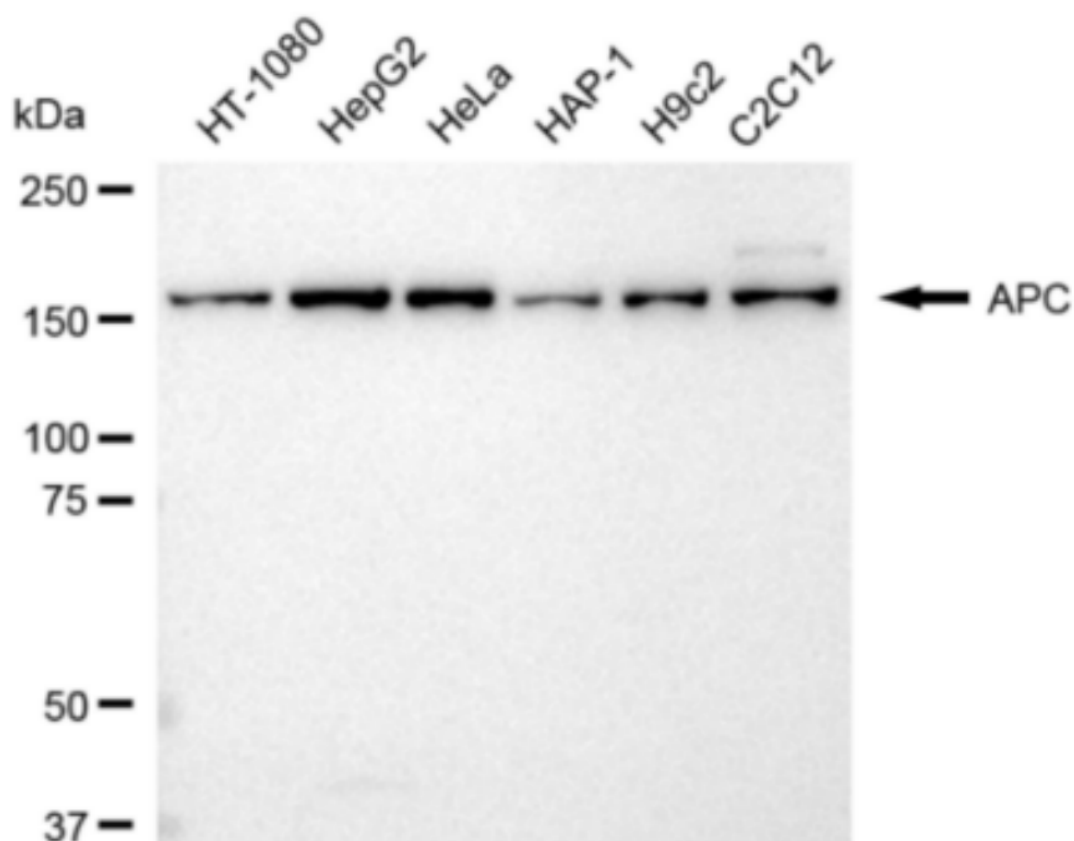
SUPPORT

SUPPORT@GENUINBIOTECH.COM
TEL: +1-540-855-7041

ORDERS

SALES@GENUINBIOTECH.COM
FAX: +1-540-855-7041

WWW.GENUINBIOTECH.COM



Copyright ©2024 Genuin Biotechnologies LLC

Western blotting analysis using anti-APC antibody (Cat#2938). Total cell lysates (30 μ g) from various cell lines were loaded and separated by SDS-PAGE. The blot was incubated with anti-APC antibody (Cat#2938, 1:5,000) and HRP-conjugated goat anti-rabbit secondary antibody (Cat#201, 1:20,000) respectively. Image was developed using FeQ™ ECL Substrate Kit (Cat#226).