

# Anti-Integrin Linked Kinase Recombinant Rabbit Monoclonal Antibody



**Catalog #: 2939**

## Aliases

ILK; Integrin Linked Kinase; 59 KDa Serine/Threonine-Protein Kinase; Integrin-Linked Protein Kinase; Beta-Integrin-Linked Kinase; P59ILK; ILK-1; ILK-2; Epididymis Secretory Protein Li 28; Integrin-Linked Kinase-2; Integrin-Linked Kinase; EC 2.7.11.1; HEL-S-28; ILK1; ILK2; P59

## Background

Gene Name: ILK

NCBI Gene Entry: [3611](#)

UniProt Entry: [Q13418](#)

## Application Information

Molecular Weight: Predicted, 51 kDa; observed, 48 kDa

Clonality: Rabbit monoclonal antibody

Clone ID: 24GB3265

Species Reactivity: Human, mouse, rat

Applications Tested: Western blotting (WB), flow cytometry (FCM), immunocytochemistry (IC)

## Immunogen

A synthesized peptide derived from human ILK

## Isotype

Rabbit IgG

## Storage Buffer

Supplied in PBS (pH 7.4) containing 50% glycerol, and 0.02% sodium azide.

## Storage

Store at -20 °C for one year.

## Recommended Dilutions

Western Blotting (WB): 1:1,000-1:5,000

Immunocytochemistry (IC): 1:100-1:1,000

Flow Cytometry (FCM): 1:2,000

**Note:** This product is for research use only.

---

### SUPPORT

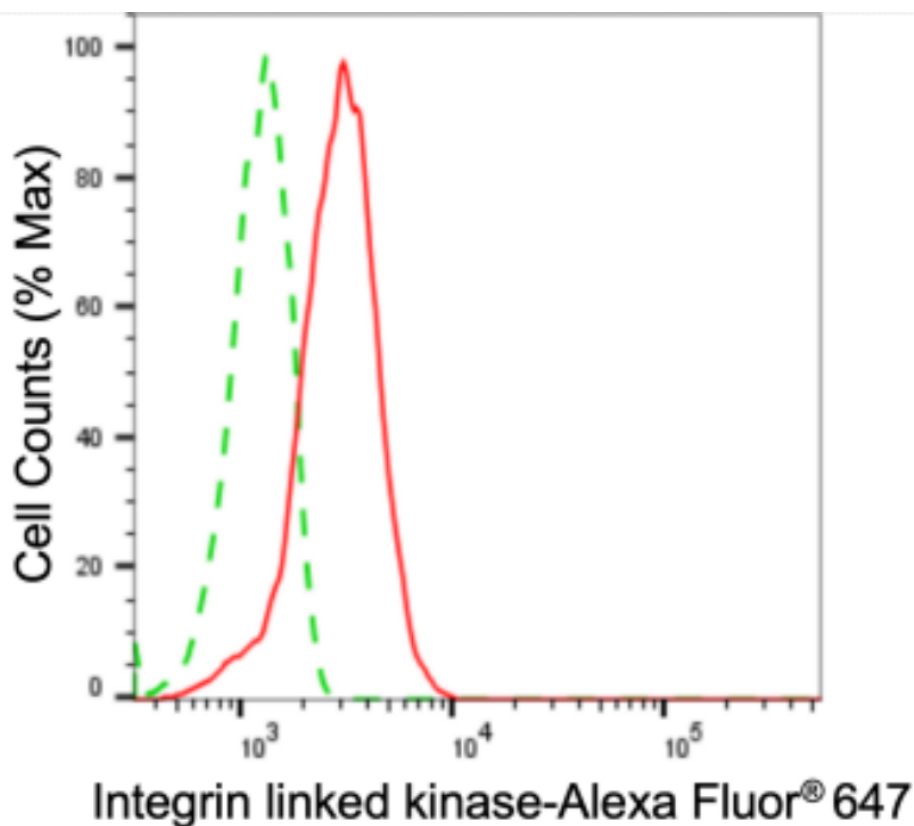
SUPPORT@GENUINBIOTECH.COM  
TEL: +1-540-855-7041

### ORDERS

SALES@GENUINBIOTECH.COM  
FAX: +1-540-855-7041

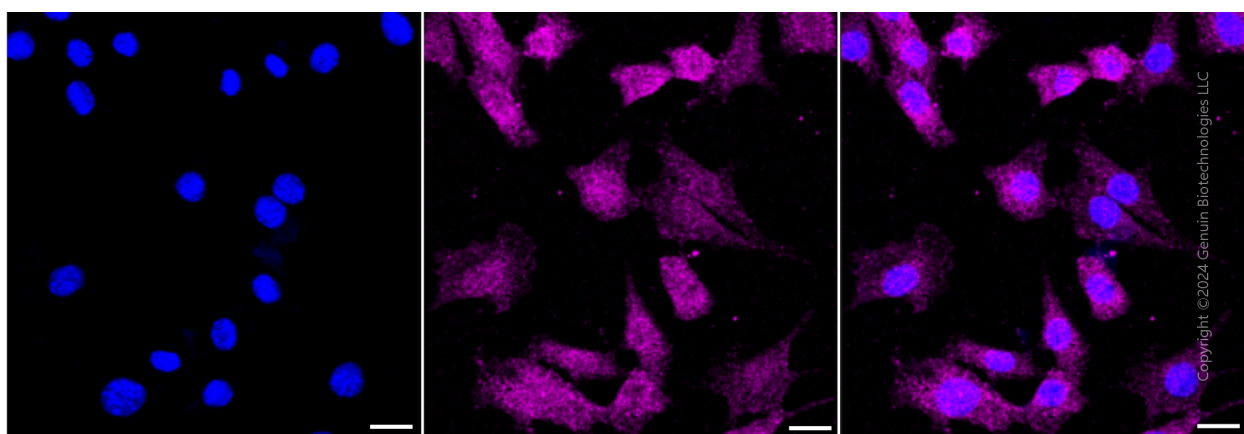
[WWW.GENUINBIOTECH.COM](http://WWW.GENUINBIOTECH.COM)

## Validation Data



Copyright ©2024 Genuin Biotechnologies LLC

Flow cytometric analysis of Integrin linked kinase expression in C2C12 cells using anti-Integrin linked kinase antibody (Cat#2939, 1:2,000). Green, isotype control; red, Integrin linked kinase.



Immunocytochemical staining of C2C12 cells with anti-Integrin linked kinase antibody (Cat#2939, 1:1,000). Nuclei were stained blue with DAPI; Integrin linked kinase was stained magenta with Alexa Fluor® 647. Images were taken using leica stellaris 5. Protein abundance based on laser intensity and smart gain: Medium. Scale bar: 20  $\mu$ m.

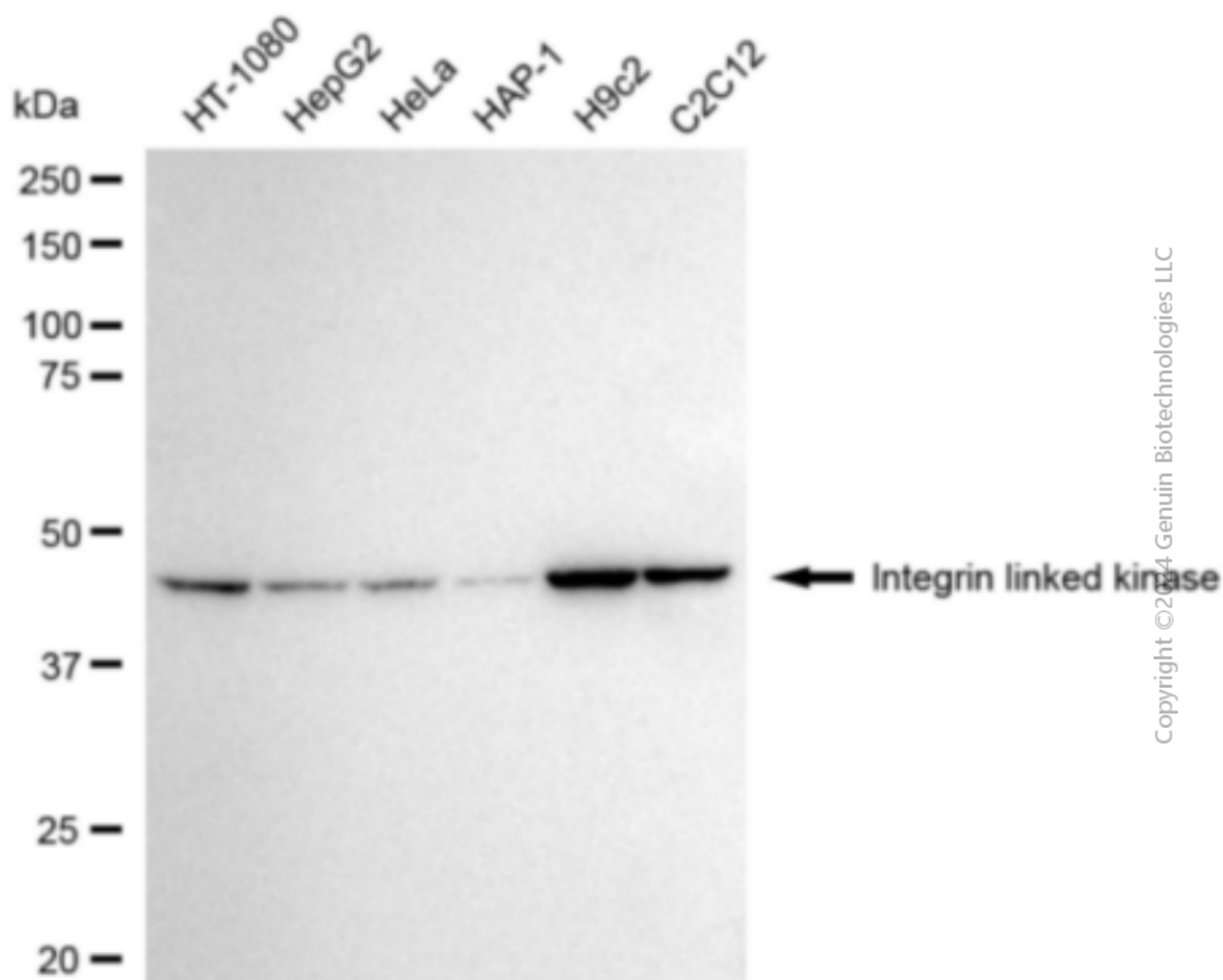
### SUPPORT

SUPPORT@GENUINBIOTECH.COM  
TEL: +1-540-855-7041

### ORDERS

SALES@GENUINBIOTECH.COM  
FAX: +1-540-855-7041

[WWW.GENUINBIOTECH.COM](http://WWW.GENUINBIOTECH.COM)



Western blotting analysis using anti-Integrin linked kinase antibody (Cat#2939). Total cell lysates (30 µg) from various cell lines were loaded and separated by SDS-PAGE. The blot was incubated with anti-Integrin linked kinase antibody (Cat#2939, 1:5,000) and HRP-conjugated goat anti-rabbit secondary antibody (Cat#201, 1:20,000) respectively. Image was developed using FeQ™ ECL Substrate Kit (Cat#226).