

Anti-MT-CO2 Recombinant Rabbit Monoclonal Antibody



Catalog #: 2940

Aliases

MT-CO2; Mitochondrially Encoded Cytochrome C Oxidase II; COX2; MTCO2; COII; CO2; Cytochrome C Oxidase Polypeptide II; Cytochrome C Oxidase Subunit II; Cytochrome C Oxidase Subunit 2; Cytochrome C Oxidase II; EC 7.1.1.9; EC 1.9.3.1; COXII

Background

Gene Name: MT-CO2

NCBI Gene Entry: [4513](#)

UniProt Entry: [P00403](#)

Application Information

Molecular Weight: Predicted, 26 kDa; observed, 21 kDa

Clonality: Rabbit monoclonal antibody

Clone ID: 24GB3270

Species Reactivity: Human

Applications Tested: Western blotting (WB), flow cytometry (FCM), immunocytochemistry (IC)

Immunogen

A synthesized peptide derived from human MTCO2

Isotype

Rabbit IgG

Storage Buffer

Supplied in PBS (pH 7.4) containing 50% glycerol, and 0.02% sodium azide.

Storage

Store at -20 °C for one year.

Recommended Dilutions

Western Blotting (WB): 1:1,000-1:5,000

Flow Cytometry (FCM): 1:2,000

Immunocytochemistry (IC): 1:100-1:1,000

Note: This product is for research use only.

SUPPORT

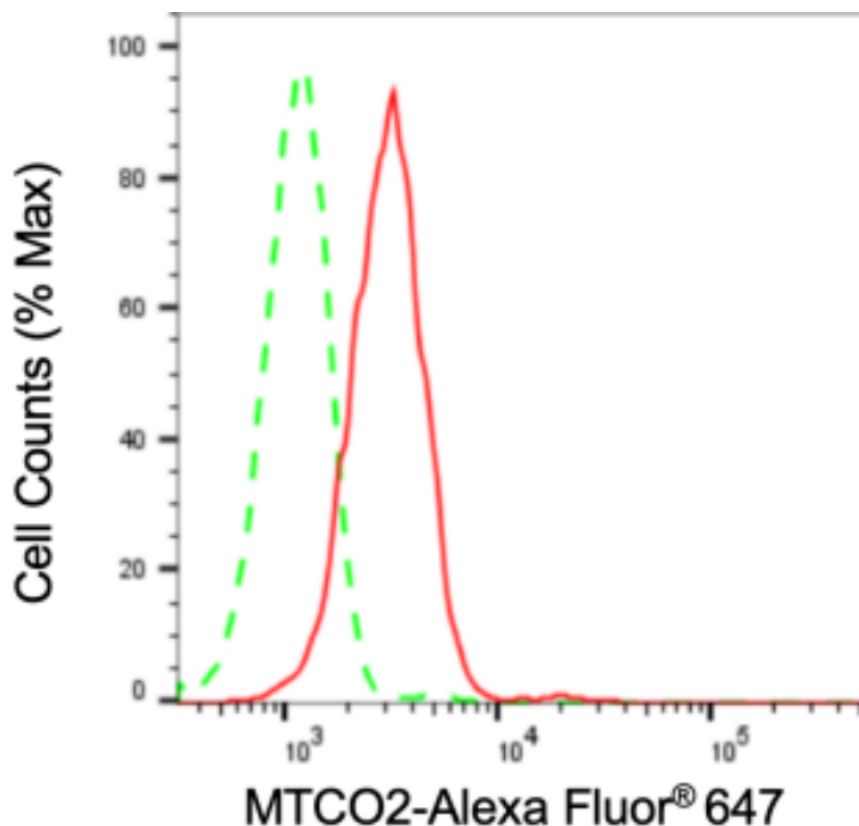
SUPPORT@GENUINBIOTECH.COM
TEL: +1-540-855-7041

ORDERS

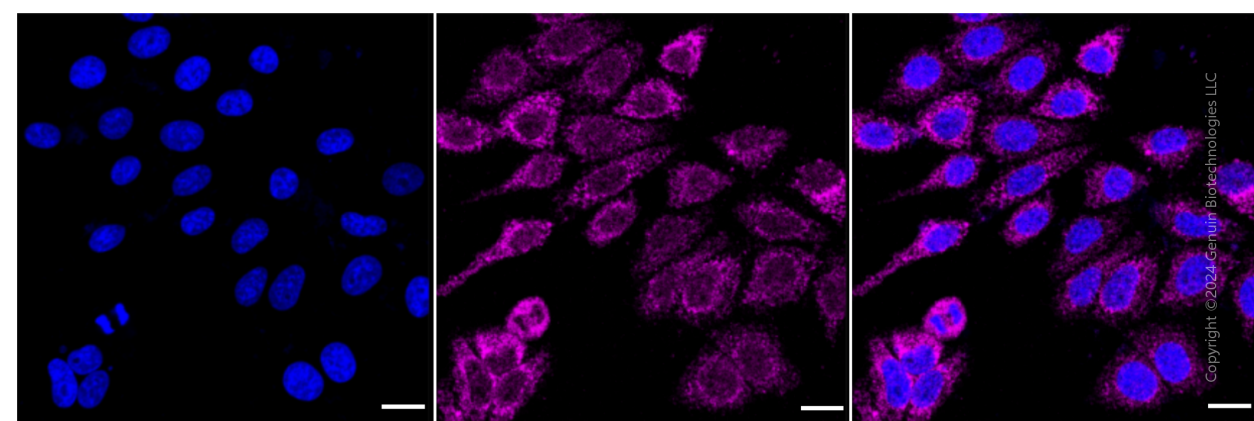
SALES@GENUINBIOTECH.COM
FAX: +1-540-855-7041

WWW.GENUINBIOTECH.COM

Validation Data



Copyright ©2024 Genuin Biotechnologies LLC



Copyright ©2024 Genuin Biotechnologies LLC

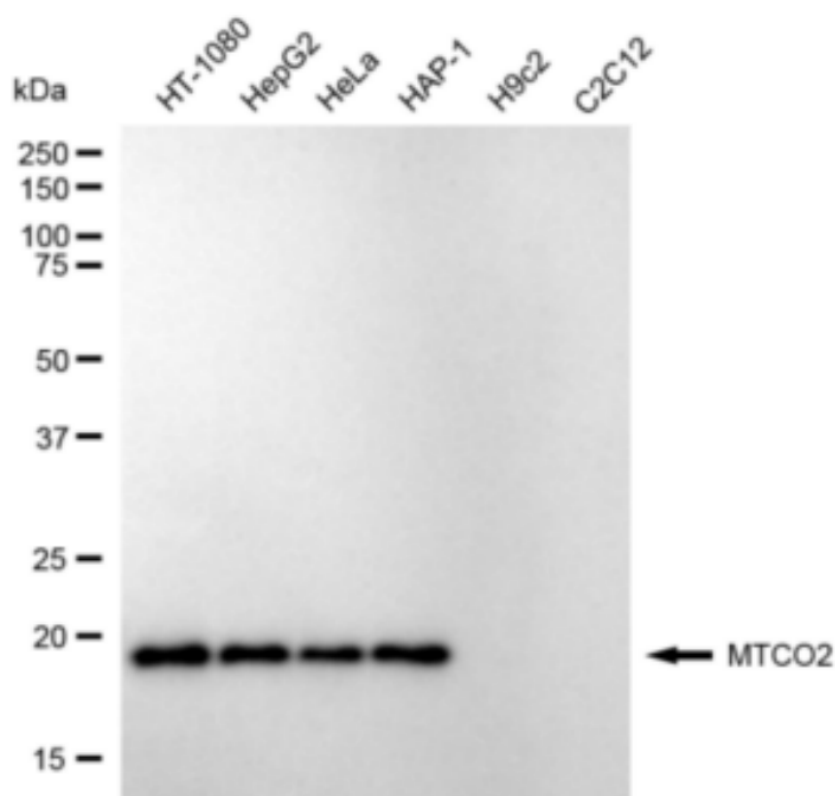
SUPPORT

SUPPORT@GENUINBIOTECH.COM
TEL: +1-540-855-7041

ORDERS

SALES@GENUINBIOTECH.COM
FAX: +1-540-855-7041

WWW.GENUINBIOTECH.COM



Copyright ©2024 Genuin Biotechnologies LLC

Western blotting analysis using anti-MTCO2 antibody (Cat#2940). Total cell lysates (30 μ g) from various cell lines were loaded and separated by SDS-PAGE. The blot was incubated with anti-MTCO2 antibody (Cat#2940, 1:5,000) and HRP-conjugated goat anti-rabbit secondary antibody (Cat#201, 1:20,000) respectively. Image was developed using FeQ™ ECL Substrate Kit (Cat#226).