

# Anti-NEDD4L Recombinant Rabbit Monoclonal Antibody



**Catalog #: 2942**

## Aliases

NEDD4L; NEDD4 Like E3 Ubiquitin Protein Ligase; KIAA0439; NEDD4-2; RSP5; Neural Precursor Cell Expressed, Developmentally Down-Regulated 4-Like, E3 Ubiquitin Protein Ligase; HECT-Type E3 Ubiquitin Transferase NED4L; E3 Ubiquitin-Protein Ligase NEDD4-Like; NEDD4.2; Neural Precursor Cell Expressed, Developmentally Down-Regulated 4-Like; Ubiquitin-Protein Ligase Rsp5; EC 2.3.2.26; EC 2.3.2.36; HNEDD4-2; EC 6.3.2; Nedd4-2; PVNH7; NEDL3

## Background

Gene Name: NEDD4L

NCBI Gene Entry: [23327](#)

UniProt Entry: [Q96PU5](#)

## Application Information

Molecular Weight: Predicted, 112 kDa; observed, 130 kDa

Clonality: Rabbit monoclonal antibody

Clone ID: 24GB3280

Species Reactivity: Human, mouse, rat

Applications Tested: Western blotting (WB), flow cytometry (FCM), immunocytochemistry (IC)

## Immunogen

A synthesized peptide derived from human NEDD4-2

## Isotype

Rabbit IgG

## Storage Buffer

Supplied in PBS (pH 7.4) containing 50% glycerol, and 0.02% sodium azide.

## Storage

Store at -20 °C for one year.

## Recommended Dilutions

Western Blotting (WB): 1:4,000-1:20,000

Flow Cytometry (FCM): 1:2,000

Immunocytochemistry (IC): 1:100-1:1,000

---

### SUPPORT

SUPPORT@GENUINBIOTECH.COM  
TEL: +1-540-855-7041

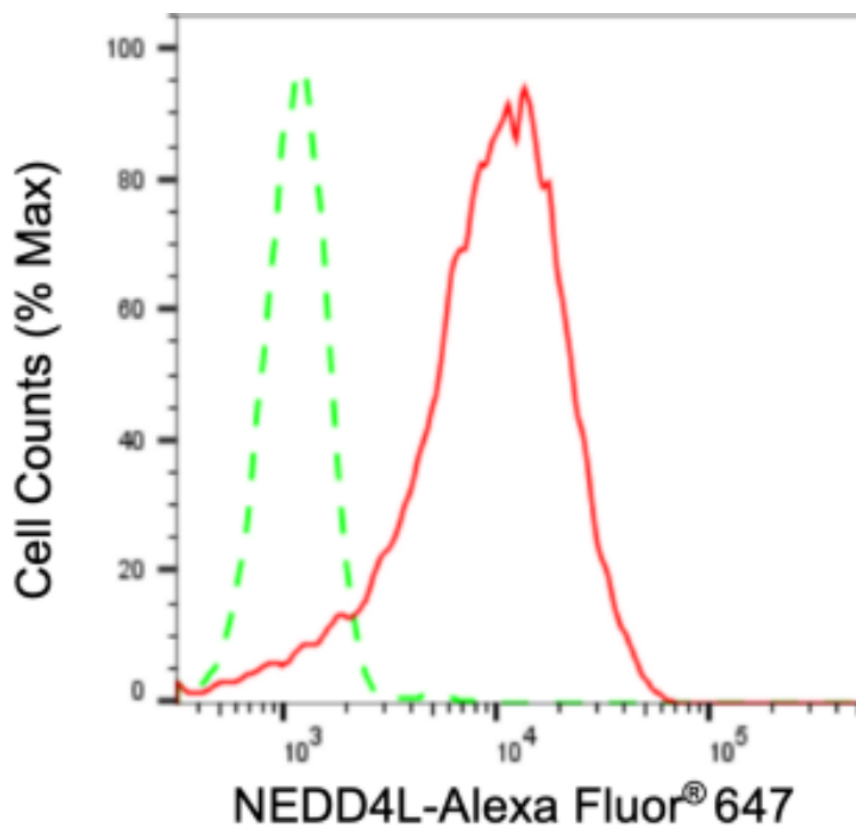
### ORDERS

SALES@GENUINBIOTECH.COM  
FAX: +1-540-855-7041

[WWW.GENUINBIOTECH.COM](http://WWW.GENUINBIOTECH.COM)

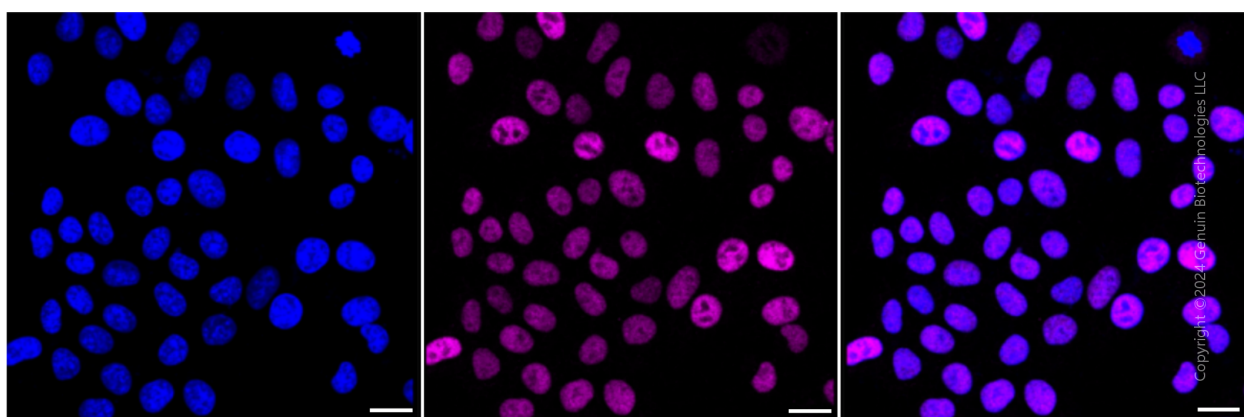
**Note:** This product is for research use only.

## Validation Data



Copyright © 2024 Genuin Biotechnologies LLC

Flow cytometric analysis of NEDD4L expression in HepG2 cells using anti-NEDD4L antibody (Cat#2942, 1:2,000). Green, isotype control; red, NEDD4L.



Copyright © 2024 Genuin Biotechnologies LLC

Immunocytochemical staining of HepG2 cells with anti-NEDD4L antibody (Cat#2942, 1:1,000). Nuclei were stained blue with DAPI; NEDD4L was stained magenta with Alexa Fluor® 647. Images were taken using Leica stellaris 5. Protein abundance based on laser Intensity and smart gain: Medium. Scale bar: 20  $\mu$ m.

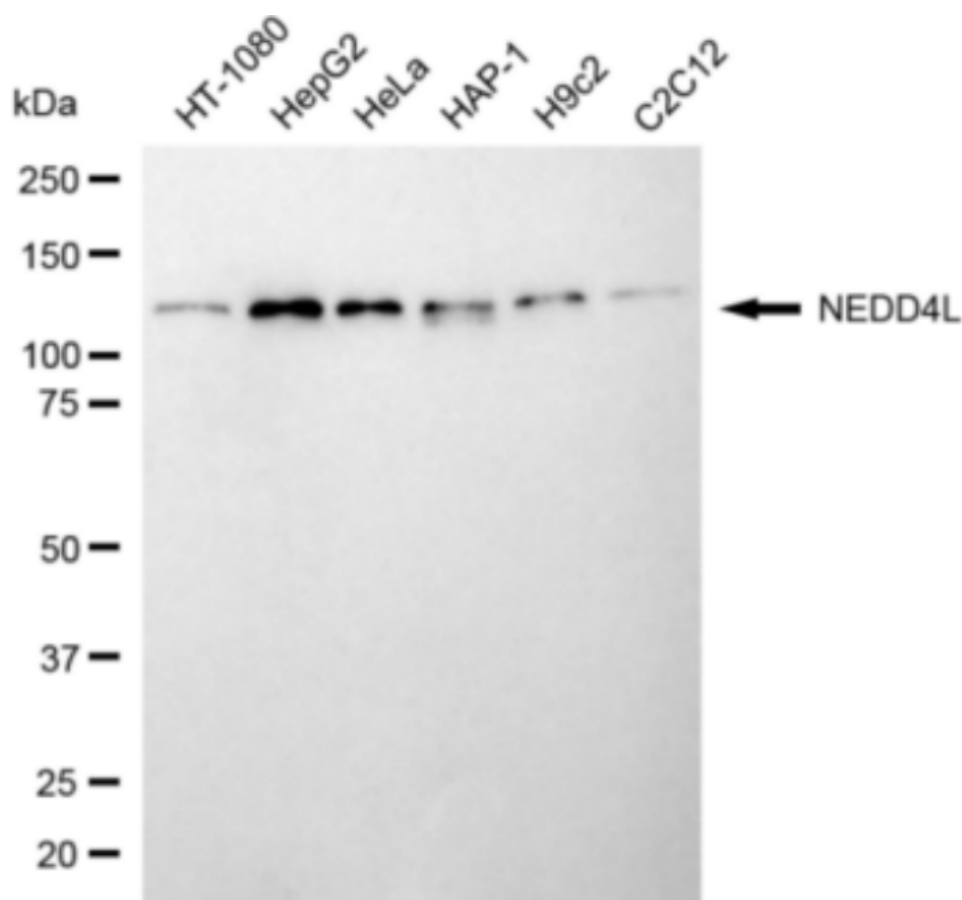
### SUPPORT

SUPPORT@GENUINBIOTECH.COM  
TEL: +1-540-855-7041

### ORDERS

SALES@GENUINBIOTECH.COM  
FAX: +1-540-855-7041

[WWW.GENUINBIOTECH.COM](http://WWW.GENUINBIOTECH.COM)



Copyright ©2024 Genuin Biotechnologies LLC

Western blotting analysis using anti-NEDD4L antibody (Cat#2942). Total cell lysates (30  $\mu$ g) from various cell lines were loaded and separated by SDS-PAGE. The blot was incubated with anti-NEDD4L antibody (Cat#2942, 1:20,000) and HRP-conjugated goat anti-rabbit secondary antibody (Cat#201, 1:20,000) respectively. Image was developed using FeQ™ ECL Substrate Kit (Cat#226).