

# Anti-Integrin Subunit Alpha 2 Recombinant Rabbit Monoclonal Antibody



**Catalog #: 2945**

## Aliases

ITGA2; Integrin Subunit Alpha 2; GPIa; VLAA2; HPA-5; CD49B; Integrin, Alpha 2 (CD49B, Alpha 2 Subunit Of VLA-2 Receptor); Very Late Activation Receptor Subunit Alpha-2; Alpha 2 Subunit Of VLA-2 Receptor; CD49 Antigen-Like Family Member B; Platelet Membrane Glycoprotein Ia; Human Platelet Alloantigen 5 2 3; Alpha 2 Integrin; Integrin Alpha-2; Glycoprotein Ia; Very Late Activation Protein 2 Receptor, Alpha-2 Subunit; Very Late Activation Receptor Alpha-2 Subunit; Human Platelet Alloantigen System 5; Platelet Glycoprotein GPIa; Platelet Antigen Br; VLA-2 Subunit Alpha; CD49b Antigen; VLA-2; BR

## Background

Gene Name: ITGA2

NCBI Gene Entry: [3673](#)

UniProt Entry: [P17301](#)

## Application Information

Molecular Weight: Predicted, 129 kDa; observed, 150 kDa

Clonality: Rabbit monoclonal antibody

Clone ID: 24GB3295

Species Reactivity: Human

Applications Tested: Western blotting (WB), flow cytometry (FCM), immunocytochemistry (IC)

## Immunogen

A synthesized peptide derived from human Integrin alpha 2

## Isotype

Rabbit IgG

## Storage Buffer

Supplied in PBS (pH 7.4) containing 50% glycerol, and 0.02% sodium azide.

## Storage

Store at -20 °C for one year.

## Recommended Dilutions

Western Blotting (WB): 1:1,000-1:5,000

Flow Cytometry (FCM): 1:2,000

---

### SUPPORT

SUPPORT@GENUINBIOTECH.COM  
TEL: +1-540-855-7041

### ORDERS

SALES@GENUINBIOTECH.COM  
FAX: +1-540-855-7041

[WWW.GENUINBIOTECH.COM](http://WWW.GENUINBIOTECH.COM)

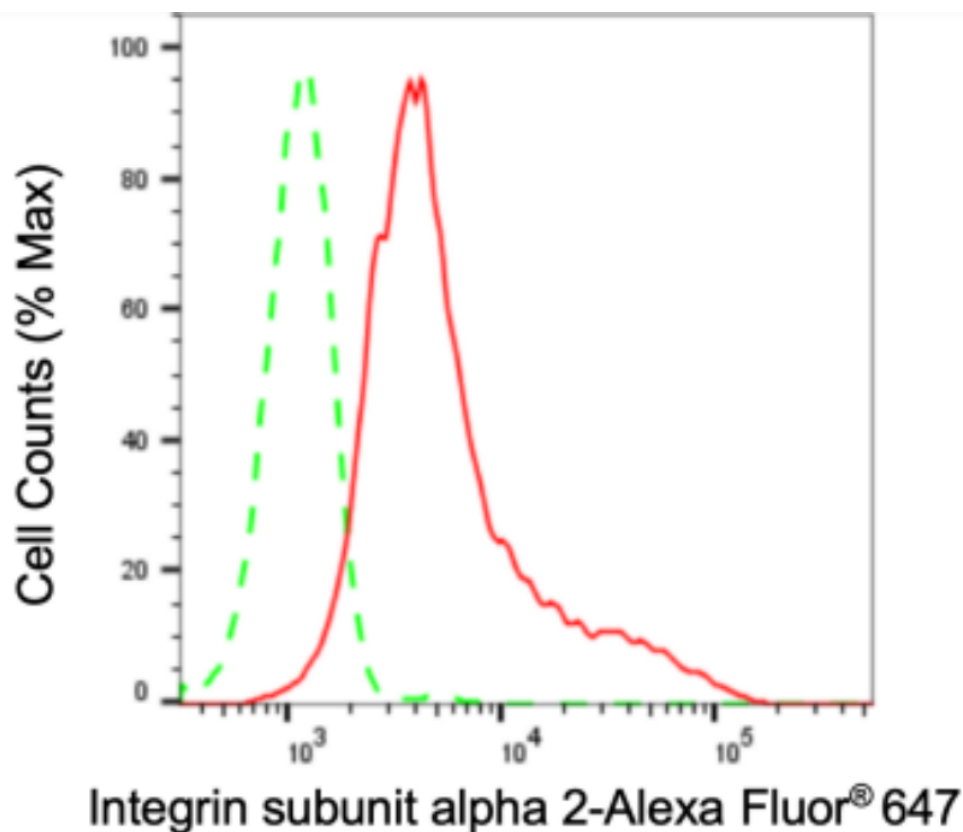
# Anti-Integrin Subunit Alpha 2 Recombinant Rabbit Monoclonal Antibody

PAGE 2

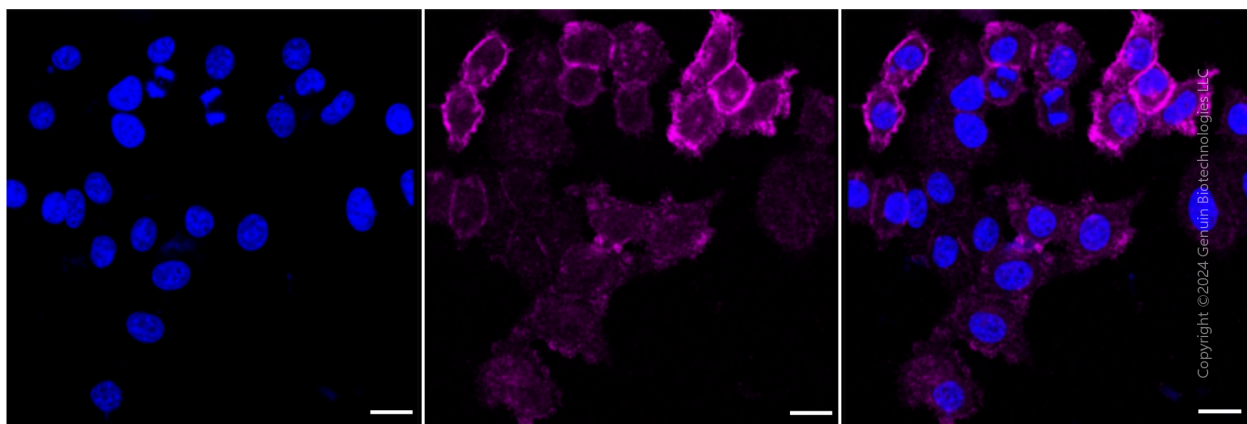
Immunocytochemistry (IC): 1:100-1:1,000

**Note:** This product is for research use only.

## Validation Data



Flow cytometric analysis of Integrin subunit alpha 2 expression in HepG2 cells using anti-Integrin subunit alpha 2 antibody (Cat#2945, 1:2,000). Green, isotype control; red, Integrin subunit alpha 2.



Immunocytochemical staining of HepG2 cells with anti-Integrin subunit alpha 2 antibody

### SUPPORT

SUPPORT@GENUINBIOTECH.COM  
TEL: +1-540-855-7041

### ORDERS

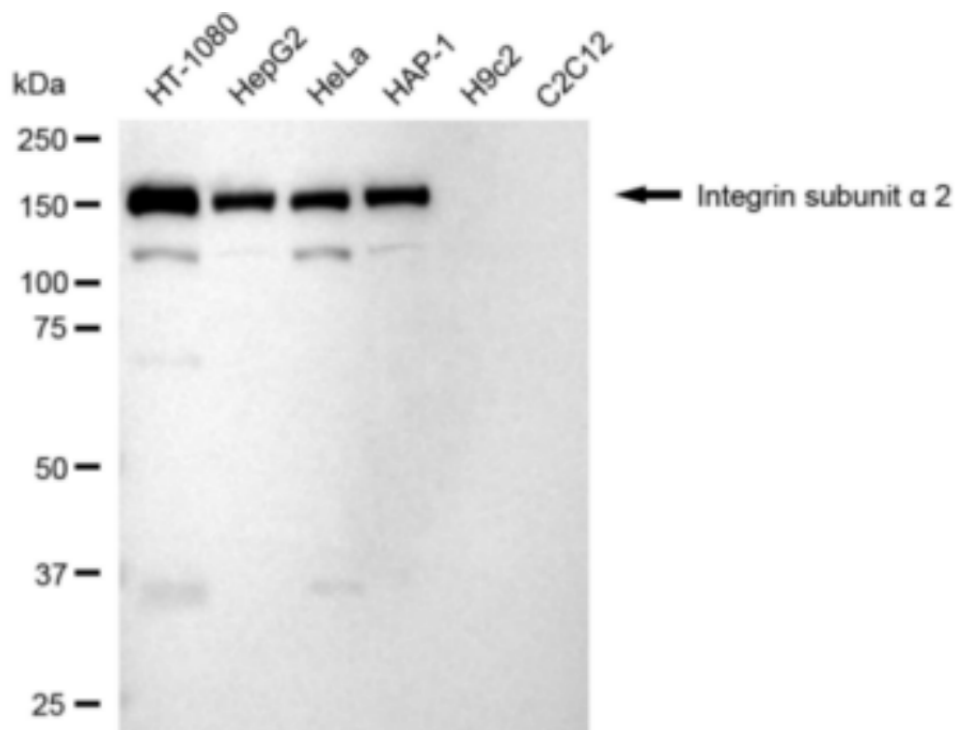
SALES@GENUINBIOTECH.COM  
FAX: +1-540-855-7041

WWW.GENUINBIOTECH.COM

## Anti-Integrin Subunit Alpha 2 Recombinant Rabbit Monoclonal Antibody

PAGE 3

(Cat#2945, 1:1,000). Nuclei were stained blue with DAPI; Integrin subunit alpha 2 was stained magenta with Alexa Fluor® 647. Images were taken using Leica stellaris 5. Protein abundance based on laser Intensity and smart gain: Medium. Scale bar: 20  $\mu$ m.



Copyright ©2024 Genuin Biotechnologies LLC

Western blotting analysis using anti-Integrin subunit alpha 2 antibody (Cat#2945). Total cell lysates (30  $\mu$ g) from various cell lines were loaded and separated by SDS-PAGE. The blot was incubated with anti-Integrin subunit alpha 2 antibody (Cat#2945, 1:5,000) and HRP-conjugated goat anti-rabbit secondary antibody (Cat#201, 1:20,000) respectively. Image was developed using FeQ™ ECL Substrate Kit (Cat#226).

### SUPPORT

SUPPORT@GENUINBIOTECH.COM  
TEL: +1-540-855-7041

### ORDERS

SALES@GENUINBIOTECH.COM  
FAX: +1-540-855-7041

WWW.GENUINBIOTECH.COM