

Anti-Cyclin H Recombinant Rabbit Monoclonal Antibody



Catalog #: 2947

Aliases

CCNH; Cyclin H; P34; P37; MO15-Associated Protein; CycH; Cyclin-Dependent Kinase-Activating Kinase Complex Subunit; CDK-Activating Kinase Complex Subunit; CAK Complex Subunit; Cyclin-H; CAK

Background

Gene Name: CCNH

NCBI Gene Entry: [902](#)

UniProt Entry: [P51946](#)

Application Information

Molecular Weight: Predicted, 38 kDa; observed, 36 kDa

Clonality: Rabbit monoclonal antibody

Clone ID: 24GB3305

Species Reactivity: Human, mouse

Applications Tested: Western blotting (WB), flow cytometry (FCM), immunocytochemistry (IC)

Immunogen

A synthesized peptide derived from human Cyclin H

Isotype

Rabbit IgG

Storage Buffer

Supplied in PBS (pH 7.4) containing 50% glycerol, and 0.02% sodium azide.

Storage

Store at -20 °C for one year.

Recommended Dilutions

Western Blotting (WB): 1:1,000-1:5,000

Flow Cytometry (FCM): 1:2,000

Immunocytochemistry (IC): 1:100-1:1,000

Note: This product is for research use only.

SUPPORT

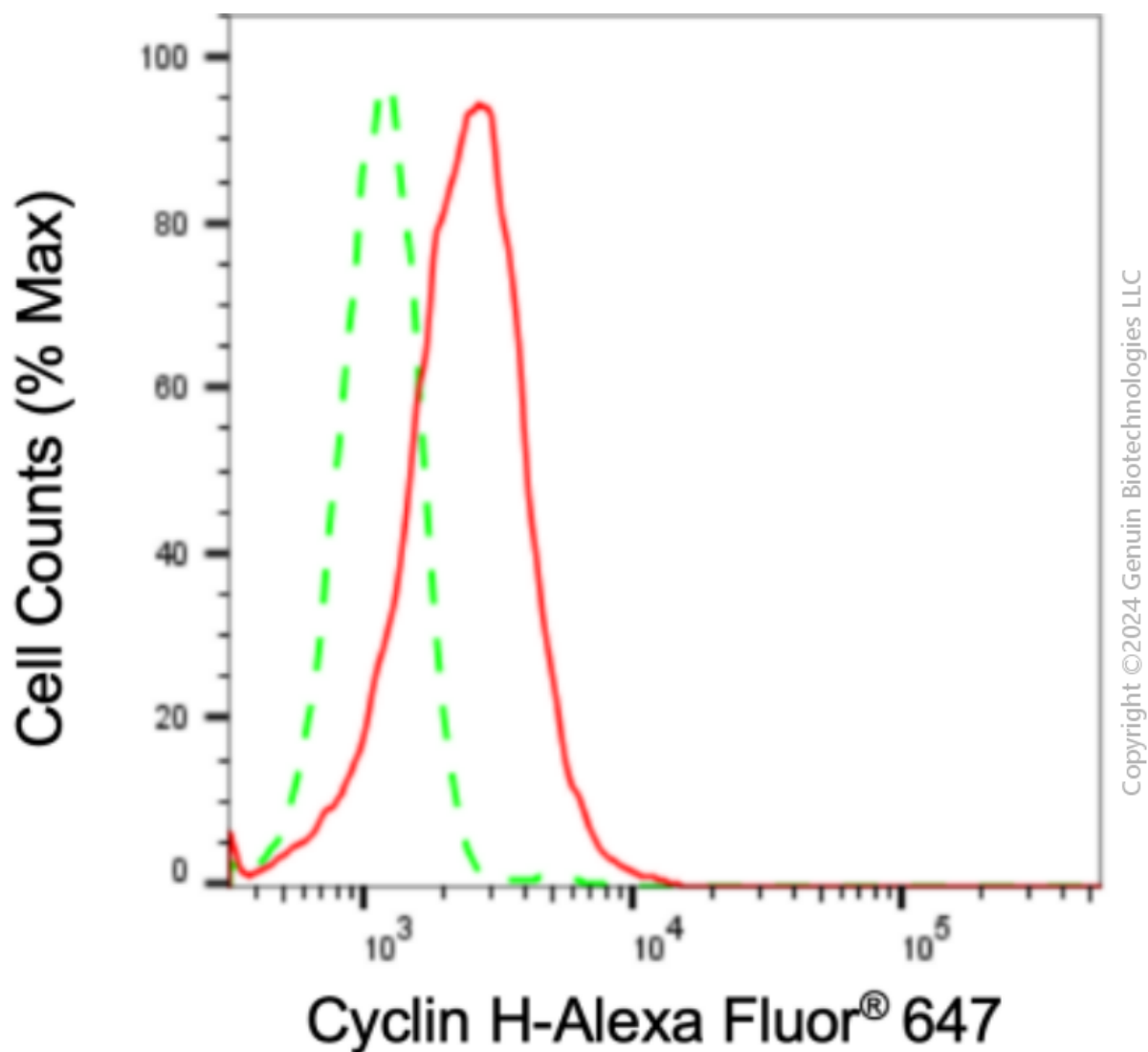
SUPPORT@GENUINBIOTECH.COM
TEL: +1-540-855-7041

ORDERS

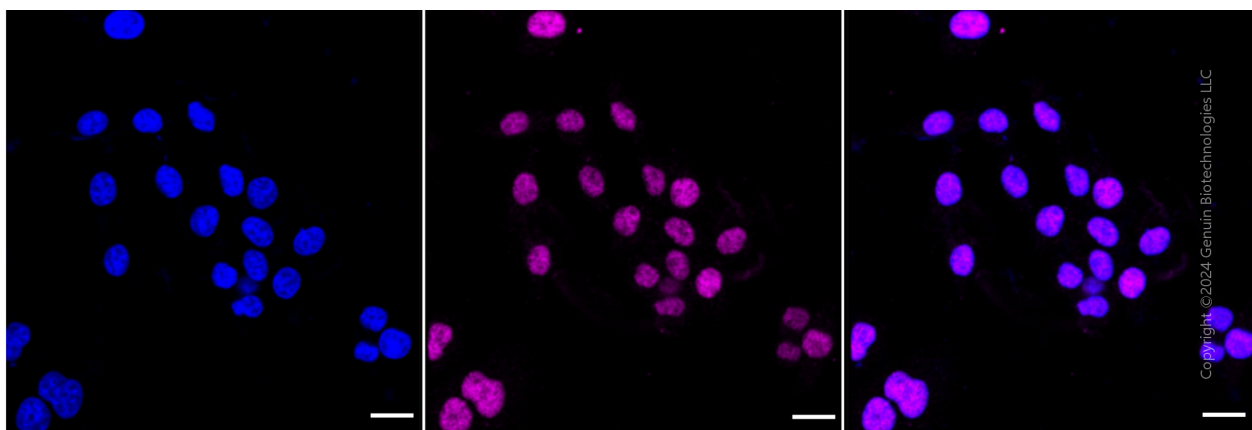
SALES@GENUINBIOTECH.COM
FAX: +1-540-855-7041

WWW.GENUINBIOTECH.COM

Validation Data



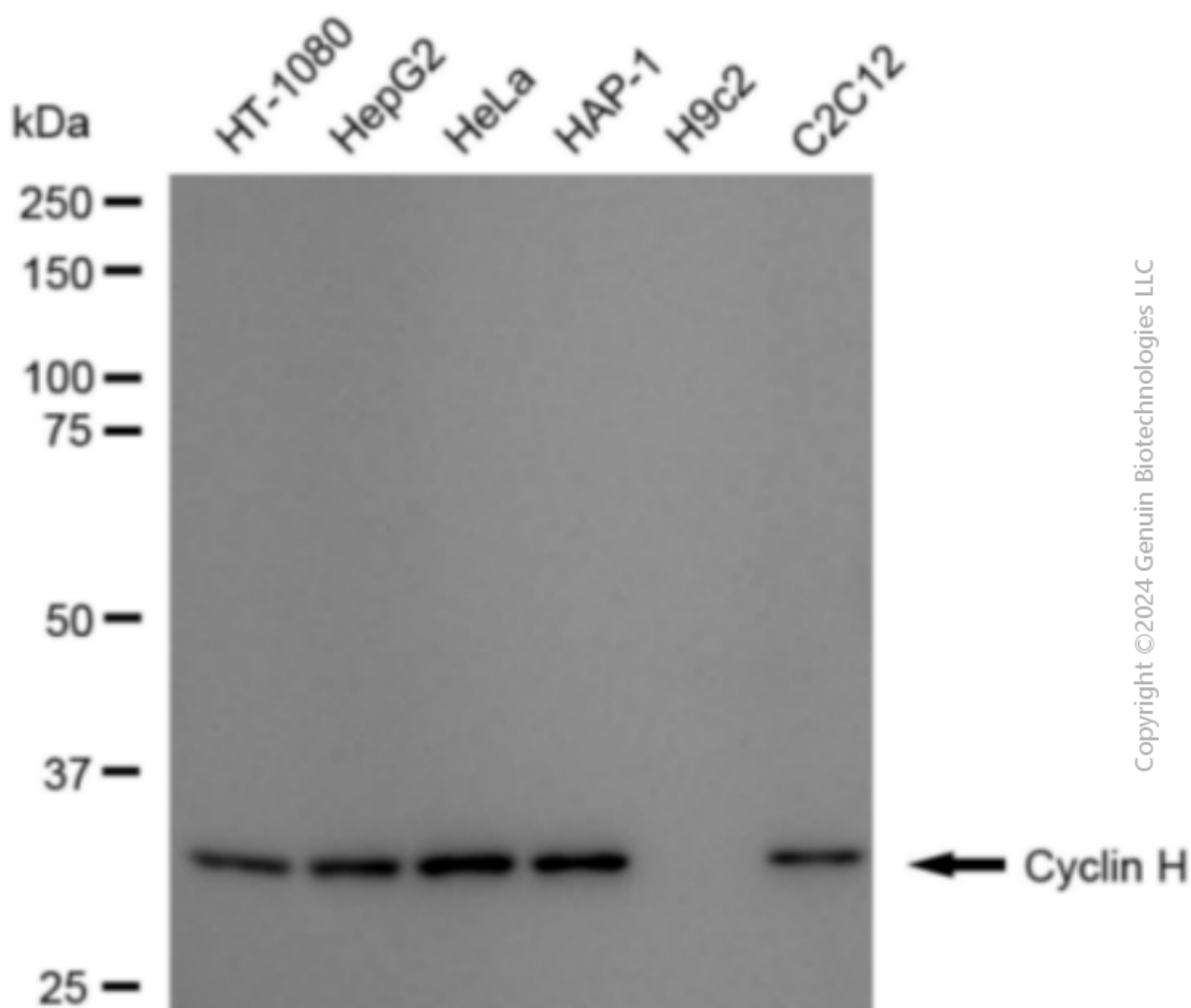
Flow cytometric analysis of Cyclin H expression in HepG2 cells using anti-Cyclin H antibody (Cat#2947, 1:2,000). Green, isotype control; red, Cyclin H.



Anti-Cyclin H Recombinant Rabbit Monoclonal Antibody

PAGE 3

Immunocytochemical staining of HepG2 cells with anti-Cyclin H antibody (Cat#2947, 1:1,000). Nuclei were stained blue with DAPI; Cyclin H was stained magenta with Alexa Fluor® 647. Images were taken using Leica stellaris 5. Protein abundance based on laser Intensity and smart gain:Low . Scale bar: 20 μ m.



Western blotting analysis using anti-Cyclin H antibody (Cat#2947). Total cell lysates (30 μ g) from various cell lines were loaded and separated by SDS-PAGE. The blot was incubated with anti-Cyclin H antibody (Cat#2947, 1:5,000) and HRP-conjugated goat anti-rabbit secondary antibody (Cat#201, 1:20,000) respectively. Image was developed using FeQ™ ECL Substrate Kit (Cat#226).

SUPPORT

SUPPORT@GENUINBIOTECH.COM
TEL: +1-540-855-7041

ORDERS

SALES@GENUINBIOTECH.COM
FAX: +1-540-855-7041

WWW.GENUINBIOTECH.COM