

Anti-Cell Division Cycle 27 Recombinant Rabbit Monoclonal Antibody



Catalog #: 2955

Aliases

CDC27; Cell Division Cycle 27; ANAPC3; APC3; D0S1430E; D17S978E; NUC2; Cell Division Cycle Protein 27 Homolog; Anaphase Promoting Complex Subunit 3; D0S1430E, D17S978E; CDC27Hs; H-NUC; Anaphase-Promoting Complex, Protein 3; Anaphase-Promoting Complex Subunit 3; Cell Division Cycle 27 Homolog; CDC27 Homolog; Nuc2 Homolog; HNUC

Background

Gene Name: CDC27

NCBI Gene Entry: [996](#)

UniProt Entry: [P30260](#)

Application Information

Molecular Weight: Predicted, 92 kDa; observed, 91 kDa

Clonality: Rabbit monoclonal antibody

Clone ID: 24GB3340

Species Reactivity: Human, mouse, rat

Applications Tested: Western blotting (WB), flow cytometry (FCM), immunocytochemistry (IC)

Immunogen

A synthesized peptide derived from human Cdc27/APC3

Isotype

Rabbit IgG

Storage Buffer

Supplied in PBS (pH 7.4) containing 50% glycerol, and 0.02% sodium azide.

Storage

Store at -20 °C for one year.

Recommended Dilutions

Western Blotting (WB): 1:1,000-1:5,000

Flow Cytometry (FCM): 1:2,000

Immunocytochemistry (IC): 1:100-1:1,000

SUPPORT

SUPPORT@GENUINBIOTECH.COM
TEL: +1-540-855-7041

ORDERS

SALES@GENUINBIOTECH.COM
FAX: +1-540-855-7041

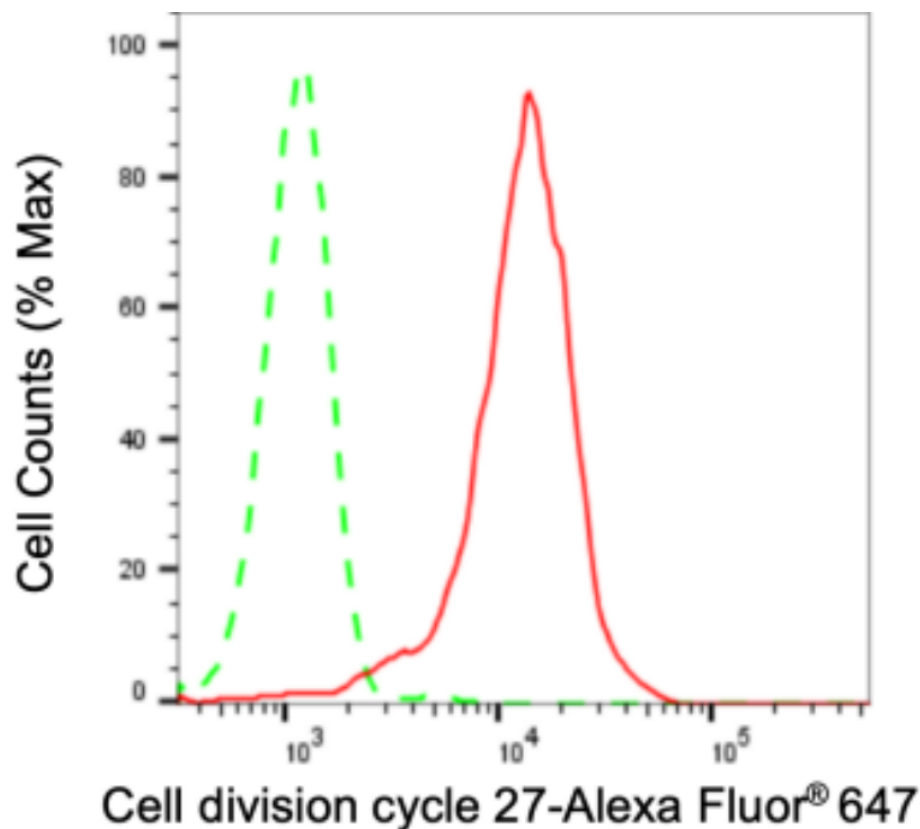
WWW.GENUINBIOTECH.COM

Anti-Cell Division Cycle 27 Recombinant Rabbit Monoclonal Antibody

PAGE 2

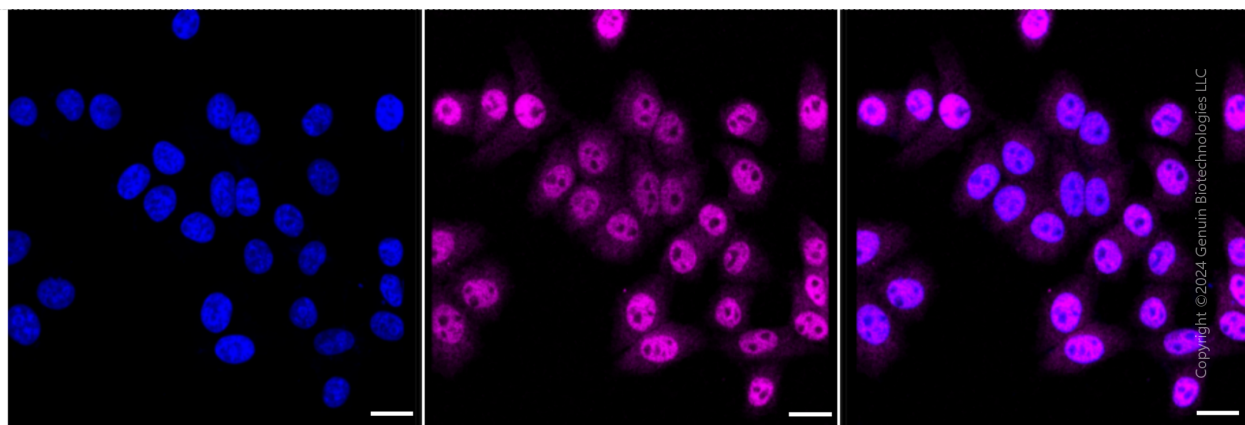
Note: This product is for research use only.

Validation Data



Copyright ©2024 Genuin Biotechnologies LLC

Flow cytometric analysis of Cell division cycle 27 expression in HepG2 cells using anti-Cell division cycle 27 antibody (Cat#2955, 1:2,000). Green, isotype control; red, Cell division cycle 27.



Copyright ©2024 Genuin Biotechnologies LLC

Immunocytochemical staining of HepG2 cells with anti-Cell division cycle 27 antibody (Cat#2955, 1:1,000). Nuclei were stained blue with DAPI; Cell division cycle 27 was stained magenta with Alexa Fluor® 647. Images were taken using Leica stellaris 5. Protein abundance

SUPPORT

SUPPORT@GENUINBIOTECH.COM
TEL: +1-540-855-7041

ORDERS

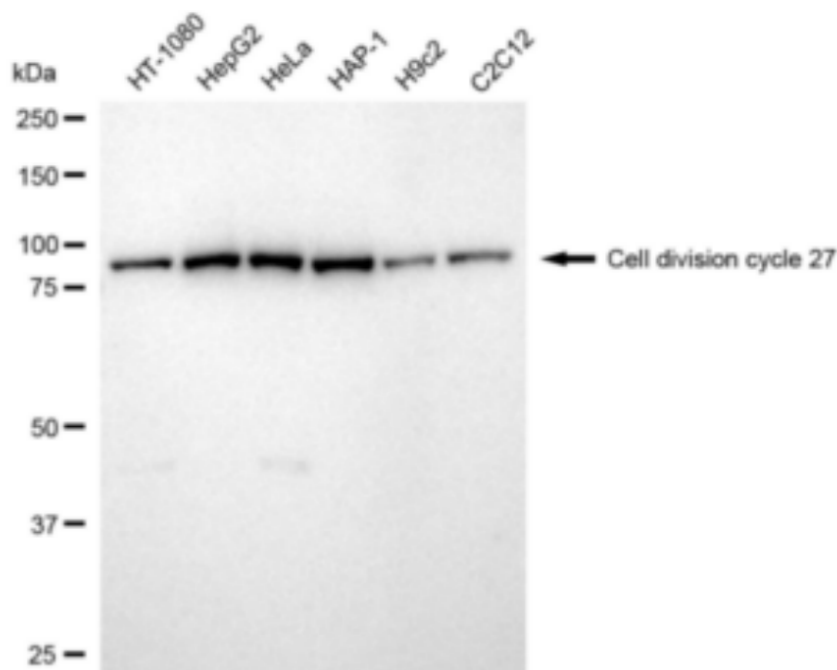
SALES@GENUINBIOTECH.COM
FAX: +1-540-855-7041

WWW.GENUINBIOTECH.COM

Anti-Cell Division Cycle 27 Recombinant Rabbit Monoclonal Antibody

PAGE 3

based on laser Intensity and smart gain: Medium. Scale bar: 20 μ m.



Copyright ©2024 Genuin Biotechnologies LLC

Western blotting analysis using anti-Cell division cycle 27 antibody (Cat#2955). Total cell lysates (30 μ g) from various cell lines were loaded and separated by SDS-PAGE. The blot was incubated with anti-Cell division cycle 27 antibody (Cat#2955, 1:5,000) and HRP-conjugated goat anti-rabbit secondary antibody (Cat#201, 1:20,000) respectively. Image was developed using FeQ™ ECL Substrate Kit (Cat#226).

SUPPORT

SUPPORT@GENUINBIOTECH.COM
TEL: +1-540-855-7041

ORDERS

SALES@GENUINBIOTECH.COM
FAX: +1-540-855-7041

WWW.GENUINBIOTECH.COM