

Anti-FUS RNA Binding Protein Recombinant Rabbit Monoclonal Antibody



Catalog #: 2957

Aliases

FUS; FUS RNA Binding Protein; TLS; HNRNPP2; FUS1; Heterogeneous Nuclear Ribonucleoprotein P2; Translocated In Liposarcoma Protein; 75 KDa DNA-Pairing Protein; RNA-Binding Protein FUS; Fused In Sarcoma; Oncogene FUS; Oncogene TLS; HnRNP-P2; ALS6; Fusion (Involved In T(12;16) In Malignant Liposarcoma); Fusion, Derived From T(12;16) Malignant Liposarcoma; Fusion Gene In Myxoid Liposarcoma; Amyotrophic Lateral Sclerosis 6; Translocated In Liposarcoma; Fus-Like Protein; POMP75; AltFUS; POMp75; ETM4

Background

Gene Name: FUS

NCBI Gene Entry: [2521](#)

UniProt Entry: [P35637](#)

Application Information

Molecular Weight: Predicted, 53 kDa; observed, 70 kDa

Clonality: Rabbit monoclonal antibody

Clone ID: 24GB3350

Species Reactivity: Human, mouse, rat

Applications Tested: Western blotting (WB), flow cytometry (FCM), immunocytochemistry (IC)

Immunogen

A synthesized peptide derived from human FUS / TLS

Isotype

Rabbit IgG

Storage Buffer

Supplied in PBS (pH 7.4) containing 50% glycerol, and 0.02% sodium azide.

Storage

Store at -20 °C for one year.

Recommended Dilutions

Western Blotting (WB): 1:1,000-1:5,000

Flow Cytometry (FCM): 1:2,000

Immunocytochemistry (IC): 1:100-1:1,000

SUPPORT

SUPPORT@GENUINBIOTECH.COM
TEL: +1-540-855-7041

ORDERS

SALES@GENUINBIOTECH.COM
FAX: +1-540-855-7041

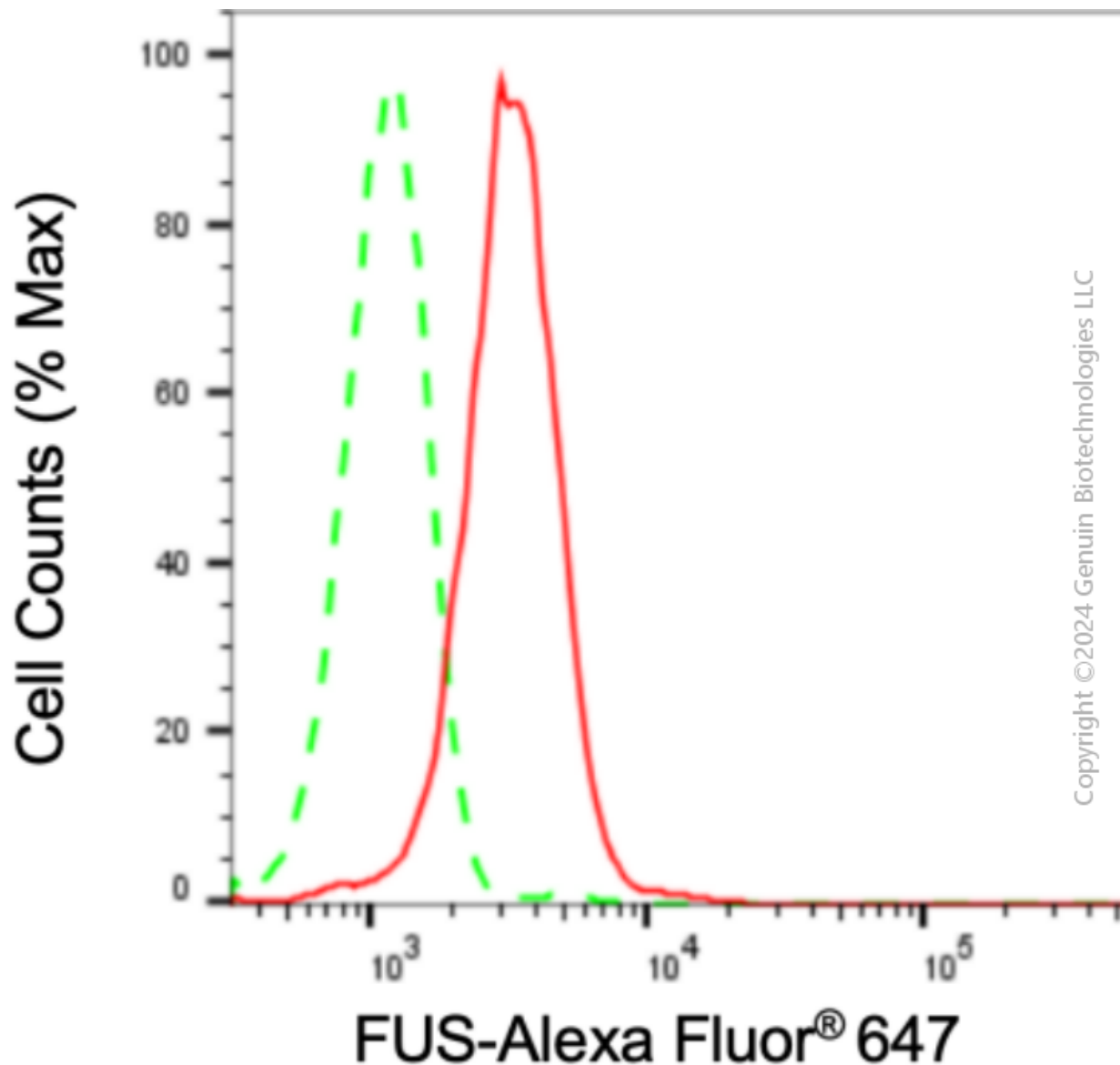
WWW.GENUINBIOTECH.COM

Anti-FUS RNA Binding Protein Recombinant Rabbit Monoclonal Antibody

PAGE 2

Note: This product is for research use only.

Validation Data



Flow cytometric analysis of FUS expression in HepG2 cells using anti-FUS antibody (Cat#2957, 1:2,000). Green, isotype control; red, FUS.

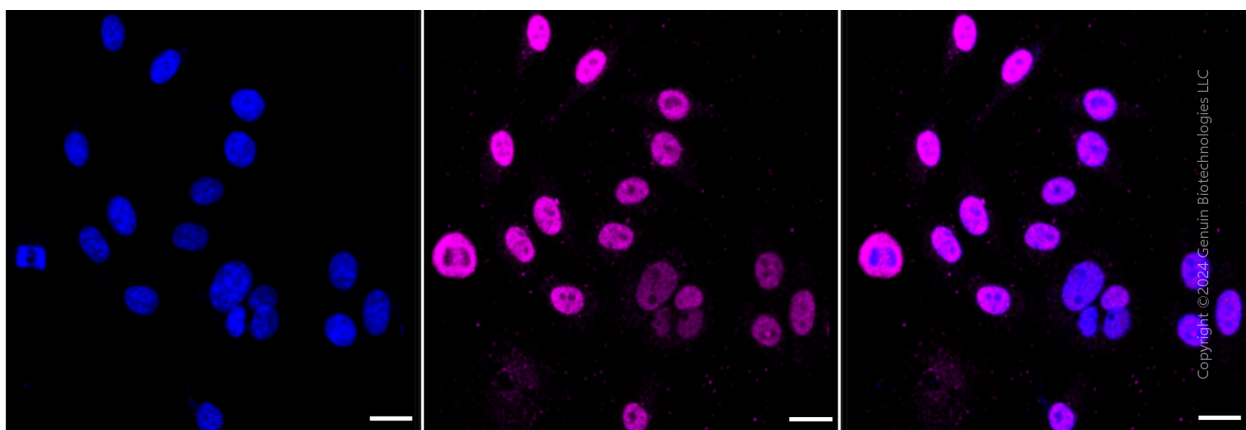
SUPPORT

SUPPORT@GENUINBIOTECH.COM
TEL: +1-540-855-7041

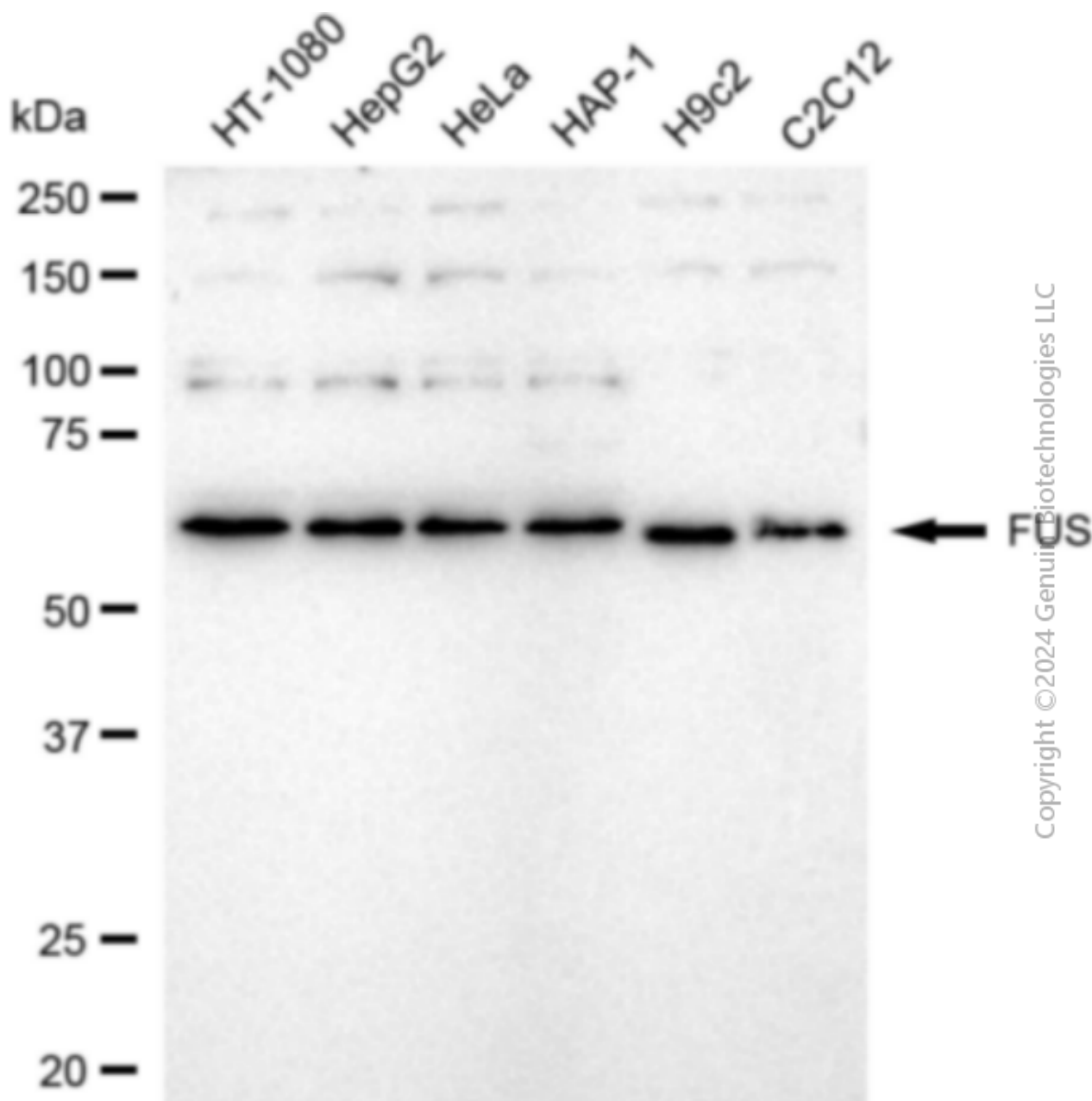
ORDERS

SALES@GENUINBIOTECH.COM
FAX: +1-540-855-7041

WWW.GENUINBIOTECH.COM



Immunocytochemical staining of HepG2 cells with anti-FUS antibody (Cat#2957, 1:1,000). Nuclei were stained blue with DAPI; FUS was stained magenta with Alexa Fluor® 647. Images were taken using Leica stellaris 5. Protein abundance based on laser Intensity and smart gain: Medium. Scale bar: 20 μ m.



Western blotting analysis using anti-FUS antibody (Cat#2957). Total cell lysates (30 µg) from various cell lines were loaded and separated by SDS-PAGE. The blot was incubated with anti-FUS antibody (Cat#2957, 1:5,000) and HRP-conjugated goat anti-rabbit secondary antibody (Cat#201, 1:20,000) respectively. Image was developed using FeQ™ ECL Substrate Kit (Cat#226).