

# Anti-Neural Cell Adhesion Molecule 1 Recombinant Rabbit Monoclonal Antibody



**Catalog #: 2960**

## Aliases

NCAM1; Neural Cell Adhesion Molecule 1; NCAM; CD56; Antigen Recognized By Monoclonal Antibody 5.1H11; Neural Cell Adhesion Molecule, NCAM; CD56 Antigen; N-CAM-1; NCAM-1; MSK39

## Background

Gene Name: NCAM1

NCBI Gene Entry: [4684](#)

UniProt Entry: [P13591](#)

## Application Information

Molecular Weight: Predicted, 95 kDa; observed, 120-140 kDa

Clonality: Rabbit monoclonal antibody

Clone ID: 24GB3365

Species Reactivity: Human, mouse, rat

Applications Tested: Western blotting (WB), flow cytometry (FCM), immunocytochemistry (IC)

## Immunogen

A synthesized peptide derived from human NCAM

## Isotype

Rabbit IgG

## Storage Buffer

Supplied in PBS (pH 7.4) containing 50% glycerol, and 0.02% sodium azide.

## Storage

Store at -20 °C for one year.

## Recommended Dilutions

Western Blotting (WB): 1:1,000-1:5,000

Flow Cytometry (FCM): 1:2,000

Immunocytochemistry (IC): 1:100-1:1,000

**Note:** This product is for research use only.

---

### SUPPORT

SUPPORT@GENUINBIOTECH.COM  
TEL: +1-540-855-7041

### ORDERS

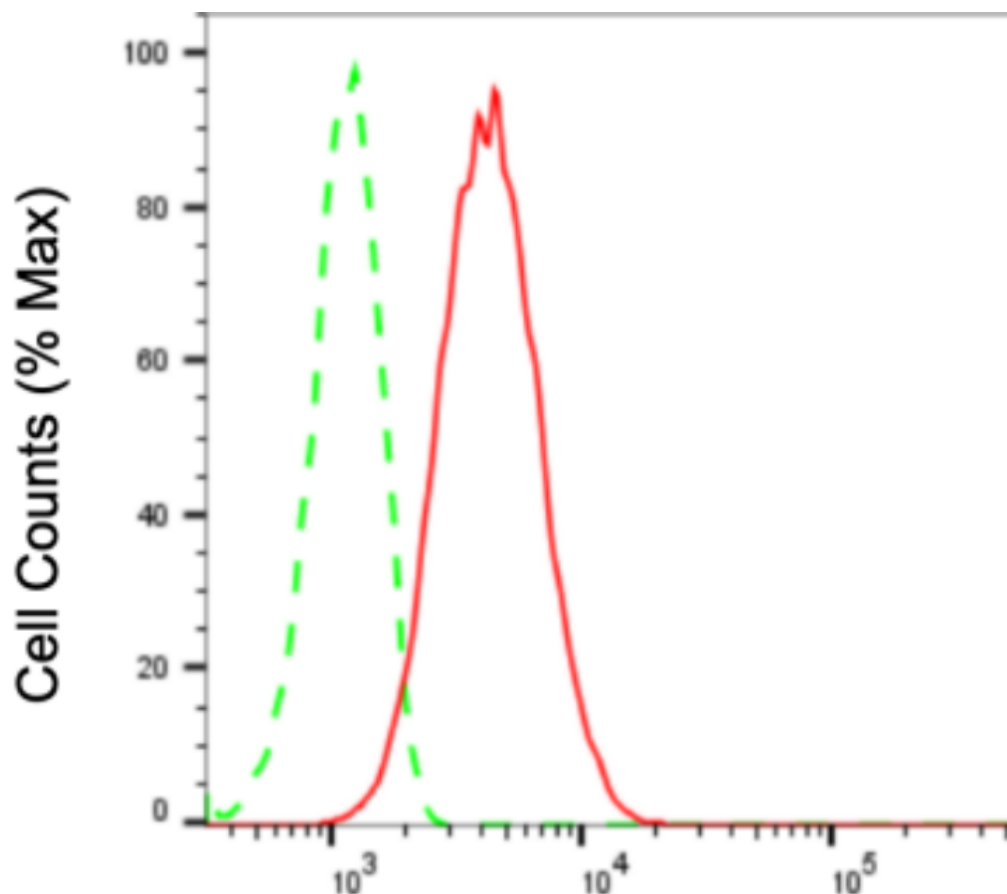
SALES@GENUINBIOTECH.COM  
FAX: +1-540-855-7041

[WWW.GENUINBIOTECH.COM](http://WWW.GENUINBIOTECH.COM)

# Anti-Neural Cell Adhesion Molecule 1 Recombinant Rabbit Monoclonal Antibody

PAGE 2

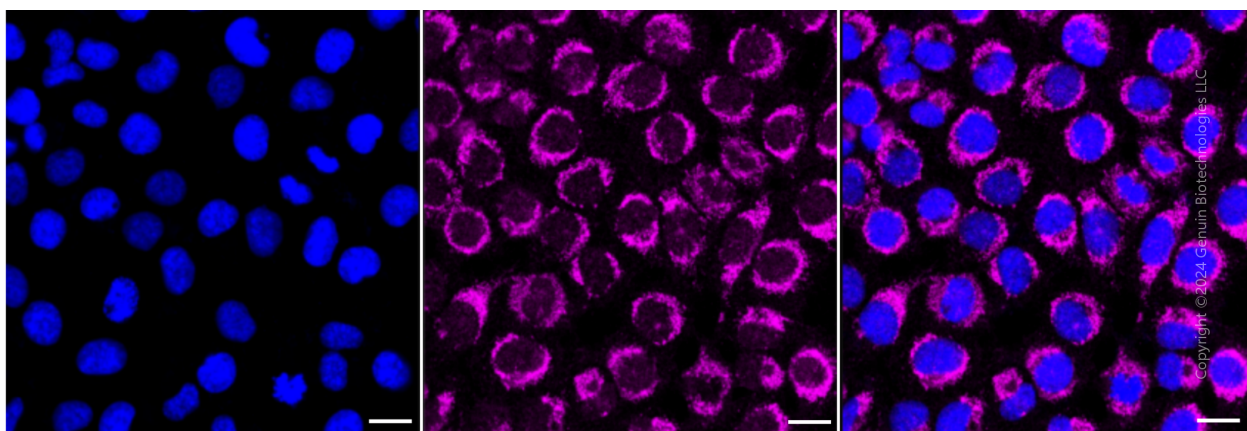
## Validation Data



Copyright ©2024 Genuin Biotechnologies LLC

## Neural cell adhesion molecule 1-Alexa Fluor® 647

Flow cytometric analysis of Neural cell adhesion molecule 1 expression in HT-1080 cells using anti-Neural cell adhesion molecule 1 antibody (Cat#2960, 1:2,000). Green, isotype control; red, Neural cell adhesion molecule 1.



Copyright ©2024 Genuin Biotechnologies LLC

Immunocytochemical staining of HT-1080 cells with anti-Neural cell adhesion molecule 1 antibody (Cat#2960, 1:1,000). Nuclei were stained blue with DAPI; Neural cell adhesion

### SUPPORT

SUPPORT@GENUINBIOTECH.COM  
TEL: +1-540-855-7041

### ORDERS

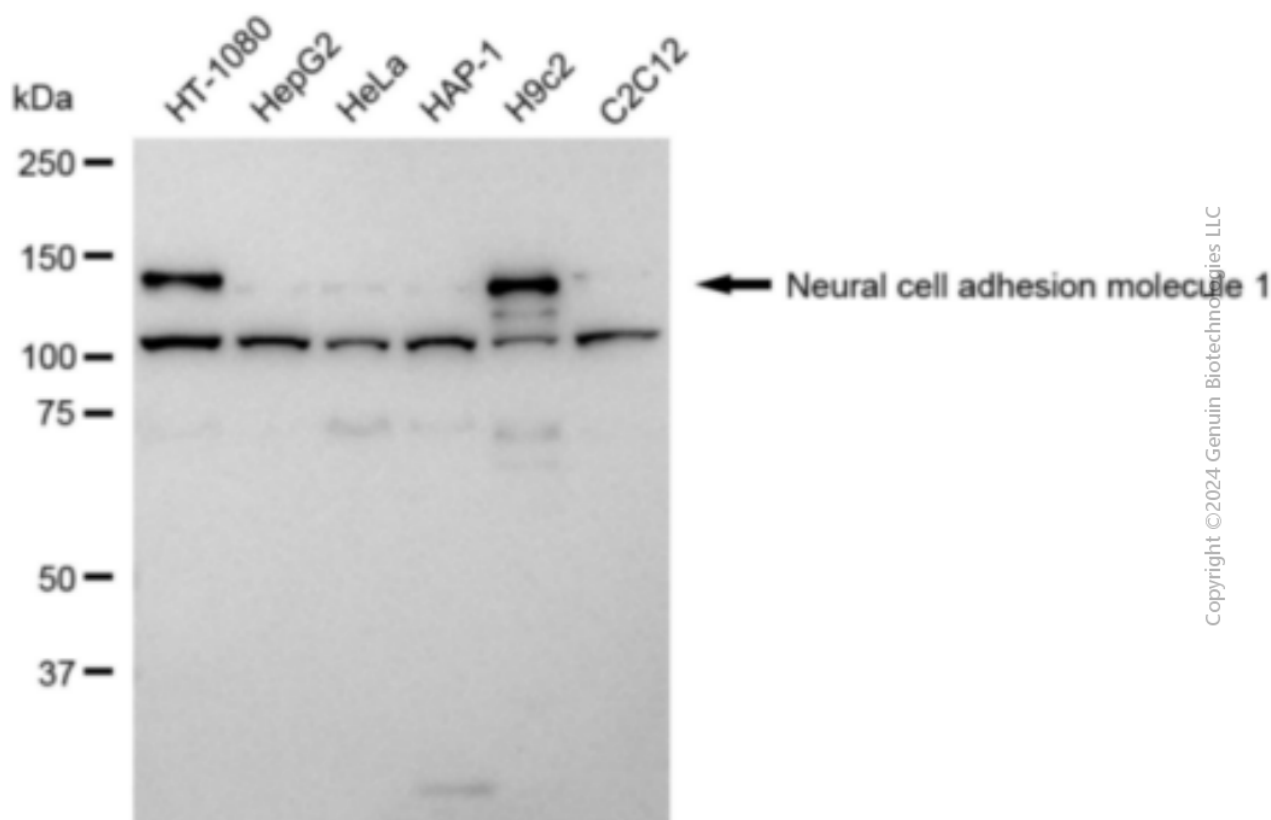
SALES@GENUINBIOTECH.COM  
FAX: +1-540-855-7041

WWW.GENUINBIOTECH.COM

## Anti-Neural Cell Adhesion Molecule 1 Recombinant Rabbit Monoclonal Antibody

PAGE 3

molecule 1 was stained magenta with Alexa Fluor® 647. Images were taken using leica stellaris 5. Protein abundance based on laser intensity and smart gain: Medium. Scale bar: 20 µm.



Western blotting analysis using anti-Neural cell adhesion molecule 1 antibody (Cat#2960). Total cell lysates (30 µg) from various cell lines were loaded and separated by SDS-PAGE. The blot was incubated with anti-Neural cell adhesion molecule 1 antibody (Cat#2960, 1:5,000) and HRP-conjugated goat anti-rabbit secondary antibody (Cat#201, 1:20,000) respectively. Image was developed using FeQ™ ECL Substrate Kit (Cat#226).

### SUPPORT

SUPPORT@GENUINBIOTECH.COM  
TEL: +1-540-855-7041

### ORDERS

SALES@GENUINBIOTECH.COM  
FAX: +1-540-855-7041

WWW.GENUINBIOTECH.COM