

Anti-CAMK2D Recombinant Rabbit Monoclonal Antibody



Catalog #: 2965

Aliases

CAMK2D; Calcium/Calmodulin Dependent Protein Kinase II Delta; CAMKD; Calcium/Calmodulin-Dependent Protein Kinase (CaM Kinase) II Delta; Calcium/Calmodulin-Dependent Protein Kinase Type II Subunit Delta; EC 2.7.11.17; Calcium/Calmodulin-Dependent Protein Kinase Type II Delta Chain; CaM Kinase II Delta Subunit; CaM Kinase II Subunit Delta; CaM-Kinase II Delta Chain; CaMK-II Delta Subunit; CaMK-II Subunit Delta; EC 2.7.11

Background

Gene Name: CAMK2D

NCBI Gene Entry: [817](#)

UniProt Entry: [Q13557](#)

Application Information

Molecular Weight: Predicted, 56 kDa; observed, 48 kDa

Clonality: Rabbit monoclonal antibody

Clone ID: 24GB3390

Species Reactivity: Human, mouse, rat

Applications Tested: Western blotting (WB), flow cytometry (FCM), immunocytochemistry (IC)

Immunogen

A synthesized peptide derived from human CaMKII delta

Isotype

Rabbit IgG

Storage Buffer

Supplied in PBS (pH 7.4) containing 50% glycerol, and 0.02% sodium azide.

Storage

Store at -20 °C for one year.

Recommended Dilutions

Western Blotting (WB): 1:1,000-1:5,000

Flow Cytometry (FCM): 1:2,000

Immunocytochemistry (IC): 1:100-1:1,000

SUPPORT

SUPPORT@GENUINBIOTECH.COM
TEL: +1-540-855-7041

ORDERS

SALES@GENUINBIOTECH.COM
FAX: +1-540-855-7041

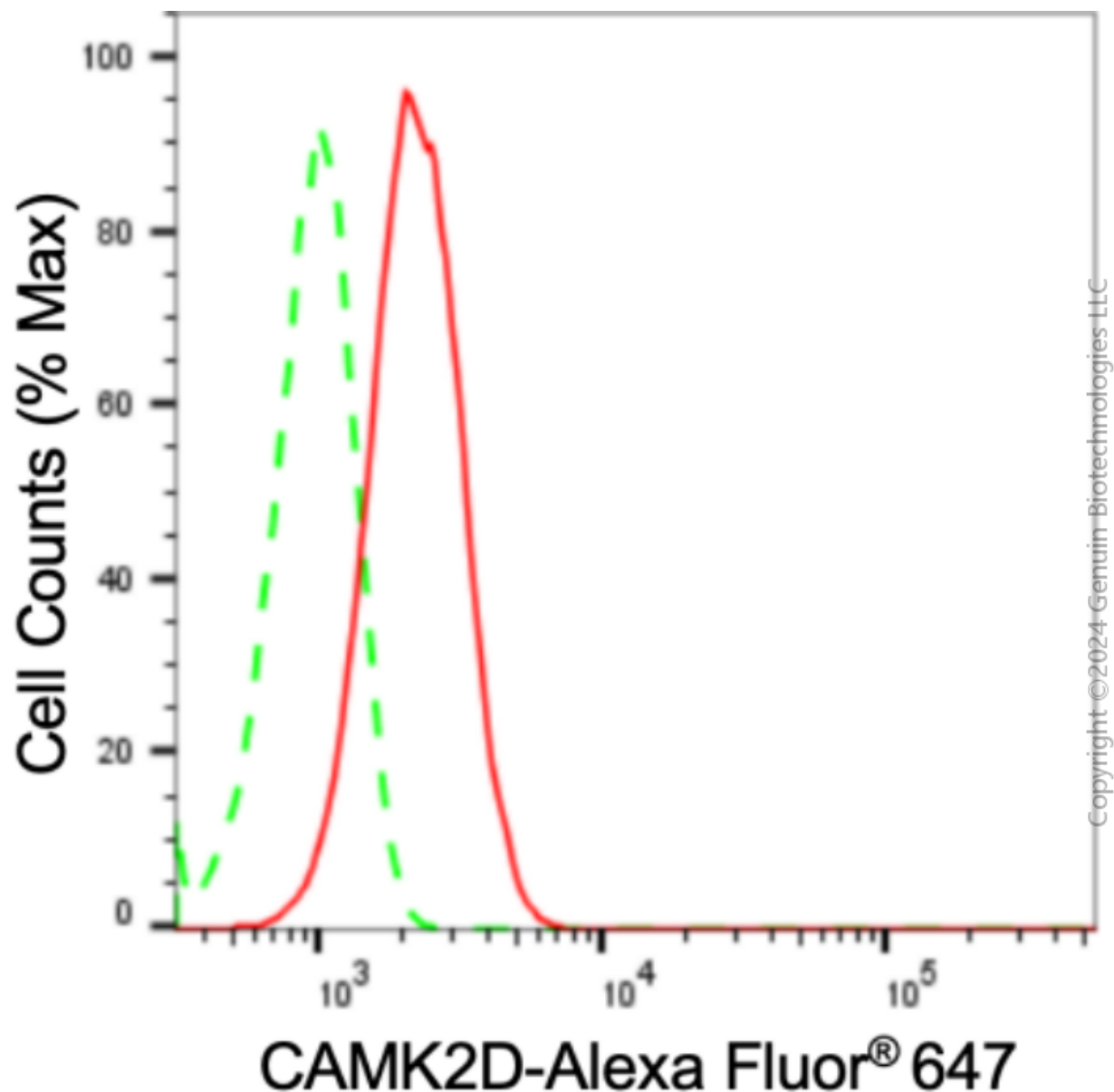
WWW.GENUINBIOTECH.COM

Anti-CAMK2D Recombinant Rabbit Monoclonal Antibody

PAGE 2

Note: This product is for research use only.

Validation Data



Flow cytometric analysis of CAMK2D expression in C2C12 cells using anti-CAMK2D antibody (Cat#2965, 1:2,000). Green, isotype control; red, CAMK2D.

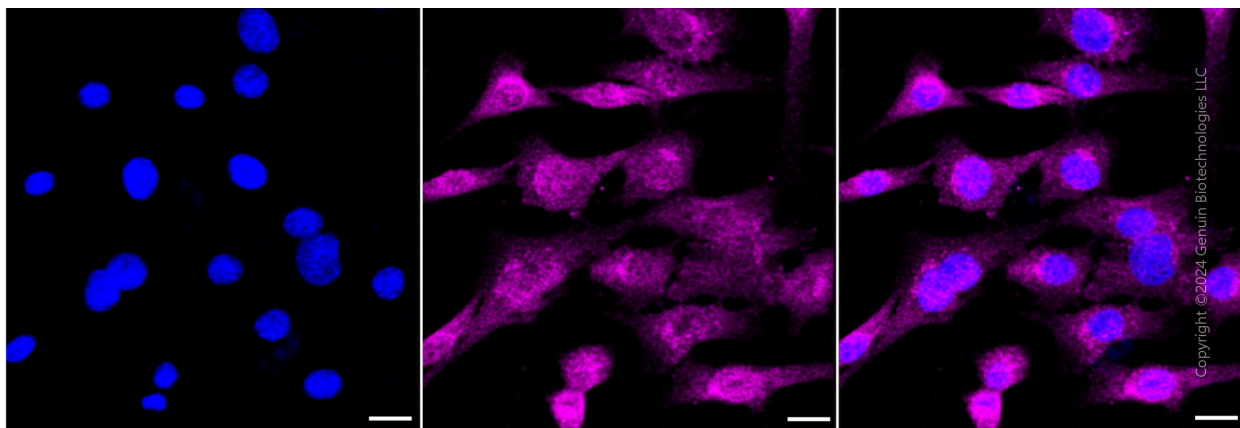
SUPPORT

SUPPORT@GENUINBIOTECH.COM
TEL: +1-540-855-7041

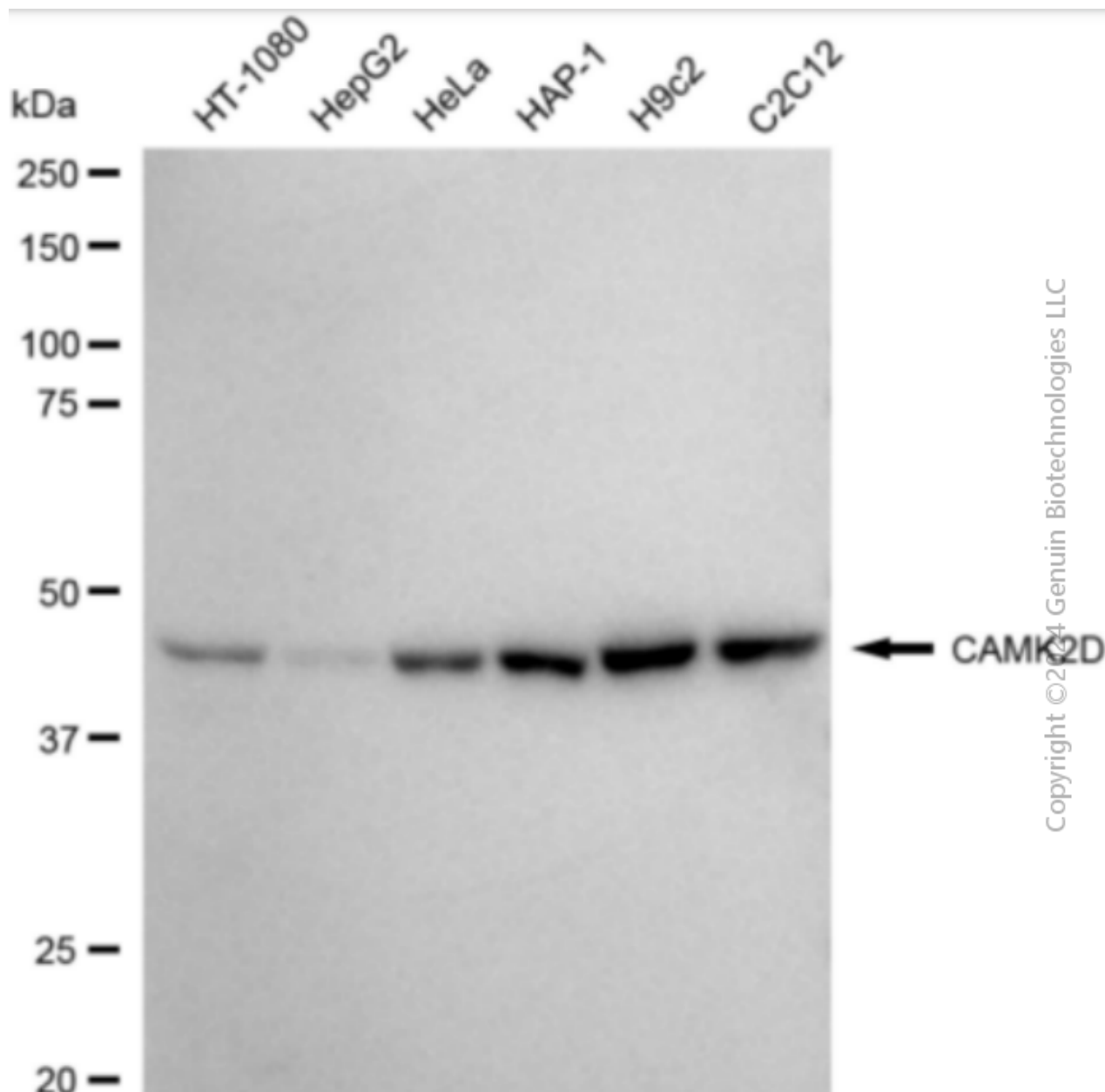
ORDERS

SALES@GENUINBIOTECH.COM
FAX: +1-540-855-7041

WWW.GENUINBIOTECH.COM



Immunocytochemical staining of C2C12 cells with anti-CAMK2D antibody (Cat#2965, 1:1,000) . Nuclei were stained blue with DAPI; CAMK2D was stained magenta with Alexa Fluor® 647. Images were taken using leica stellaris 5. Protein abundance based on laser intensity and smart gain: Medium. Scale bar: 20 μ m.



Western blotting analysis using anti-CAMK2D antibody (Cat#2965). Total cell lysates (30 µg) from various cell lines were loaded and separated by SDS-PAGE. The blot was incubated with anti-CAMK2D antibody (Cat#2965, 1:5,000) and HRP-conjugated goat anti-rabbit secondary antibody (Cat#201, 1:20,000) respectively. Image was developed using FeQ™ ECL Substrate Kit (Cat#226).