

Anti-Annexin A2 Recombinant Rabbit Monoclonal Antibody



Catalog #: 2967

Aliases

ANXA2; Annexin A2; Annexin II; ANX2L4; CAL1H; LPC2D; LIP2; ANX2; Placental Anticoagulant Protein IV; Calpactin I Heavy Chain; Calpactin-1 Heavy Chain 3 4; Annexin-2; Protein I; PAP-IV; P36; Epididymis Secretory Sperm Binding Protein; Epididymis Secretory Protein Li 270; Calpactin I Heavy Polypeptide; Chromobindin 8; Chromobindin-8; HEL-S-270; LPC2

Background

Gene Name: ANXA2

NCBI Gene Entry: [302](#)

UniProt Entry: [P07355](#)

Application Information

Molecular Weight: Predicted, 39 kDa; observed, 35 kDa

Clonality: Rabbit monoclonal antibody

Clone ID: 24GB3400

Species Reactivity: Human, mouse, rat

Applications Tested: Western blotting (WB), flow cytometry (FCM), immunocytochemistry (IC)

Immunogen

A synthesized peptide derived from human Annexin A2

Isotype

Rabbit IgG

Storage Buffer

Supplied in PBS (pH 7.4) containing 50% glycerol, and 0.02% sodium azide.

Storage

Store at -20 °C for one year.

Recommended Dilutions

Western Blotting (WB): 1:1,000-1:5,000

Flow Cytometry (FCM): 1:2,000

Immunocytochemistry (IC): 1:100-1:1,000

SUPPORT

SUPPORT@GENUINBIOTECH.COM
TEL: +1-540-855-7041

ORDERS

SALES@GENUINBIOTECH.COM
FAX: +1-540-855-7041

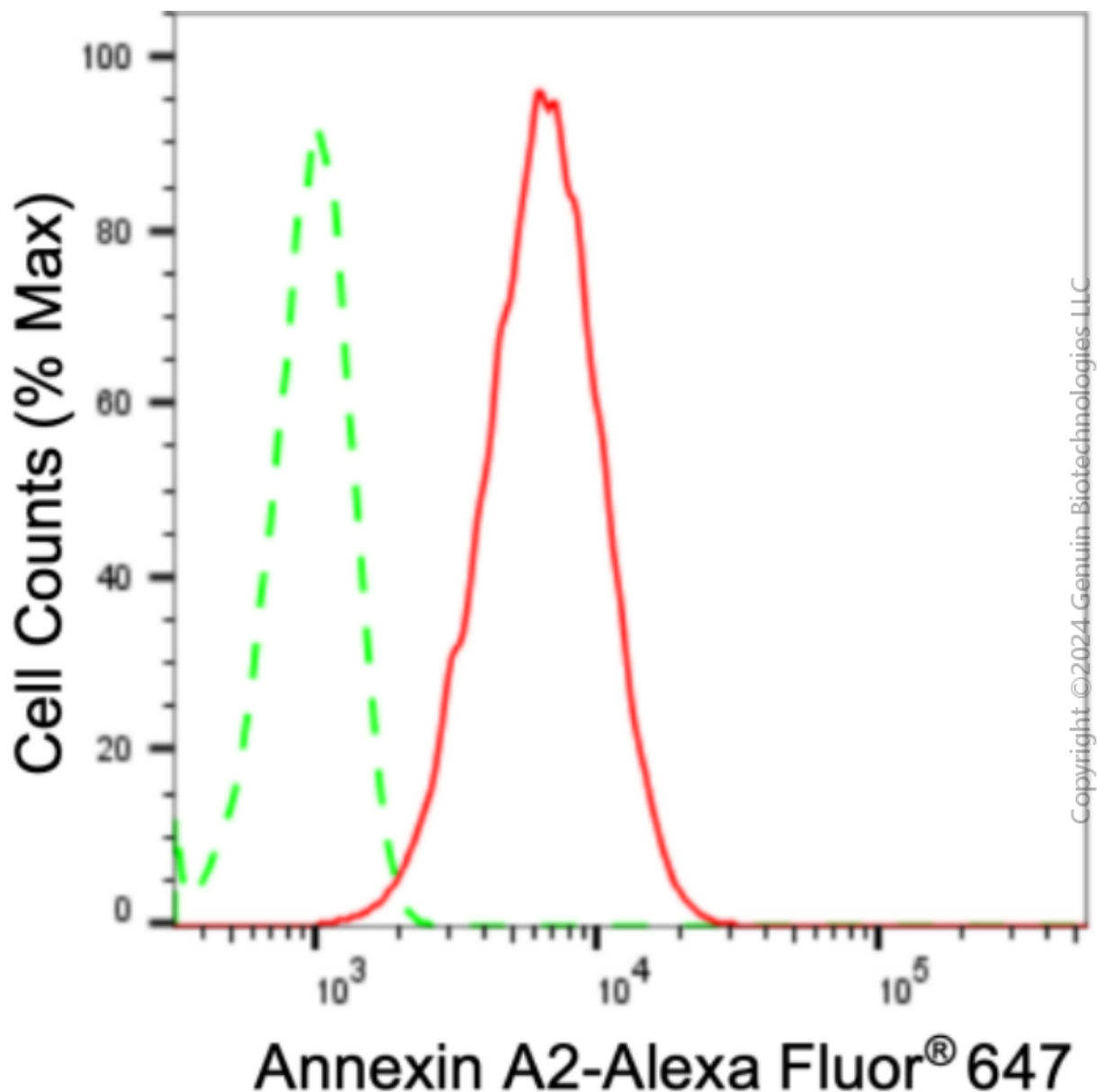
WWW.GENUINBIOTECH.COM

Anti-Annexin A2 Recombinant Rabbit Monoclonal Antibody

PAGE 2

Note: This product is for research use only.

Validation Data



Flow cytometric analysis of Annexin A2 expression in C2C12 cells using anti-Annexin A2 antibody (Cat#2967, 1:2,000). Green, isotype control; red, Annexin A2.

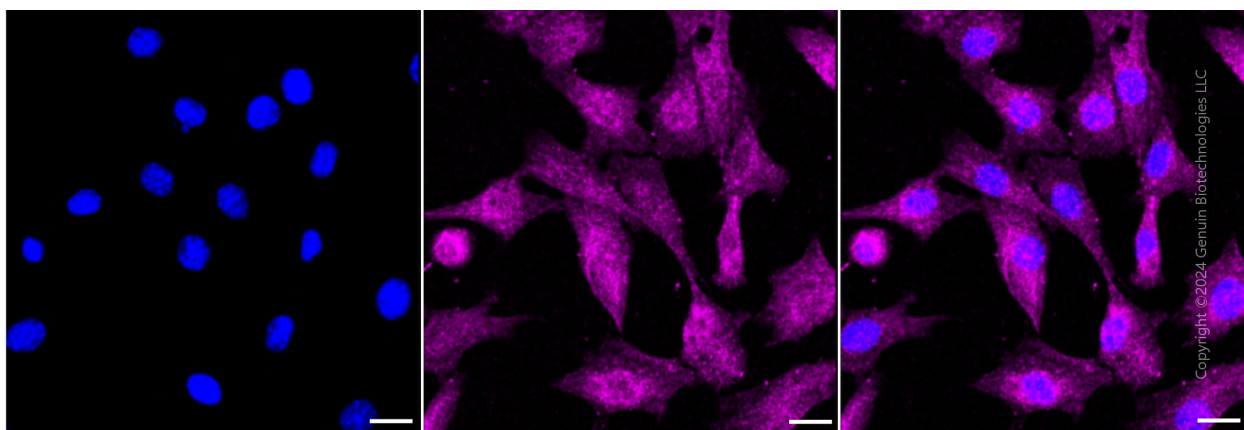
SUPPORT

SUPPORT@GENUINBIOTECH.COM
TEL: +1-540-855-7041

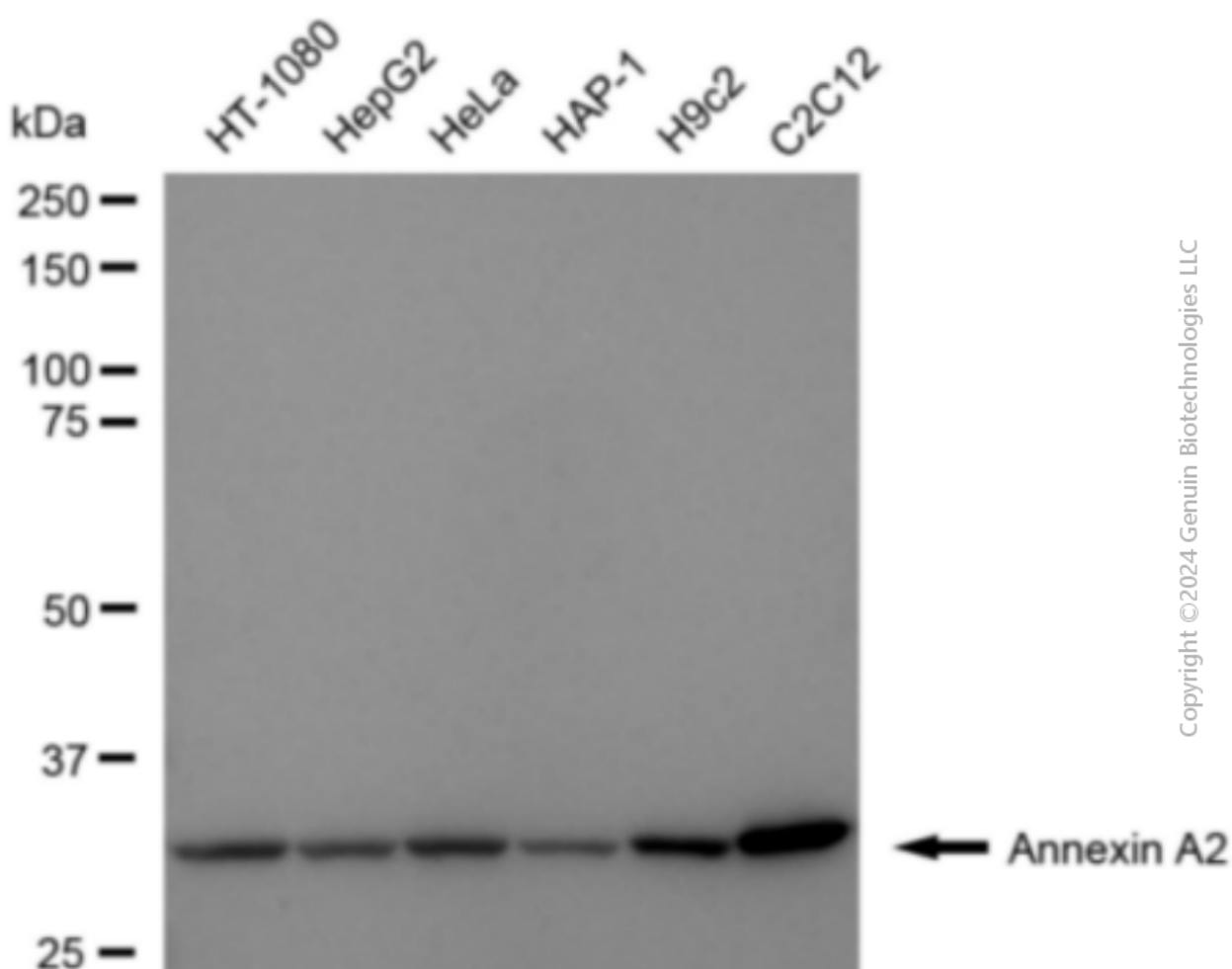
ORDERS

SALES@GENUINBIOTECH.COM
FAX: +1-540-855-7041

WWW.GENUINBIOTECH.COM



Immunocytochemical staining of C2C12 cells with anti-Annexin A2 antibody (Cat#2967, 1:1,000) . Nuclei were stained blue with DAPI; Annexin A2 was stained magenta with Alexa Fluor® 647. Images were taken using leica stellaris 5. Protein abundance based on laser intensity and smart gain: Medium. Scale bar: 20 µm.



Western blotting analysis using anti-Annexin A2 antibody (Cat#2967). Total cell lysates (30 µg) from various cell lines were loaded and separated by SDS-PAGE. The blot was incubated with

SUPPORT

SUPPORT@GENUINBIOTECH.COM
TEL: +1-540-855-7041

ORDERS

SALES@GENUINBIOTECH.COM
FAX: +1-540-855-7041

WWW.GENUINBIOTECH.COM

Anti-Annexin A2 Recombinant Rabbit Monoclonal Antibody

PAGE 4

anti-Annexin A2 antibody (Cat#2967, 1:5,000) and HRP-conjugated goat anti-rabbit secondary antibody (Cat#201, 1:20,000) respectively. Image was developed using FeQ™ ECL Substrate Kit (Cat#226).

SUPPORT

SUPPORT@GENUINBIOTECH.COM
TEL: +1-540-855-7041

ORDERS

SALES@GENUINBIOTECH.COM
FAX: +1-540-855-7041

WWW.GENUINBIOTECH.COM