

# Anti-NR4A1 Recombinant Rabbit Monoclonal Antibody



**Catalog #: 2971**

## Aliases

NR4A1; Nuclear Receptor Subfamily 4 Group A Member 1; NAK-1; NGFIB; NUR77; GFRP1; TR3; N10; HMR; Nuclear Receptor Subfamily 4immunitygroup A Member 1; Nuclear Hormone Receptor NUR/77; Early Response Protein NAK1; Orphan Nuclear Receptor HMR; Orphan Nuclear Receptor TR3; Testicular Receptor 3; ST-59; Nuclear Receptor Subfamily 4, Group A, Member 1; Growth Factor-Inducible Nuclear Protein N10; Steroid Receptor TR3; TR3 Orphan Receptor; Hormone Receptor; Nur77; NP10; NAK1

## Background

Gene Name: NR4A1

NCBI Gene Entry: [3164](#)

UniProt Entry: [P22736](#)

## Application Information

Molecular Weight: Predicted, 64 kDa; observed, 64 kDa

Clonality: Rabbit monoclonal antibody

Clone ID: 24GB3420

Species Reactivity: Human, mouse

Applications Tested: Western blotting (WB), flow cytometry (FCM), immunocytochemistry (IC)

## Immunogen

A synthesized peptide derived from human NUR77

## Isotype

Rabbit IgG

## Storage Buffer

Supplied in PBS (pH 7.4) containing 50% glycerol, and 0.02% sodium azide.

## Storage

Store at -20 °C for one year.

## Recommended Dilutions

Western Blotting (WB): 1:1,000-1:5,000

Flow Cytometry (FCM): 1:2,000

Immunocytochemistry (IC): 1:100-1:1,000

---

### SUPPORT

SUPPORT@GENUINBIOTECH.COM  
TEL: +1-540-855-7041

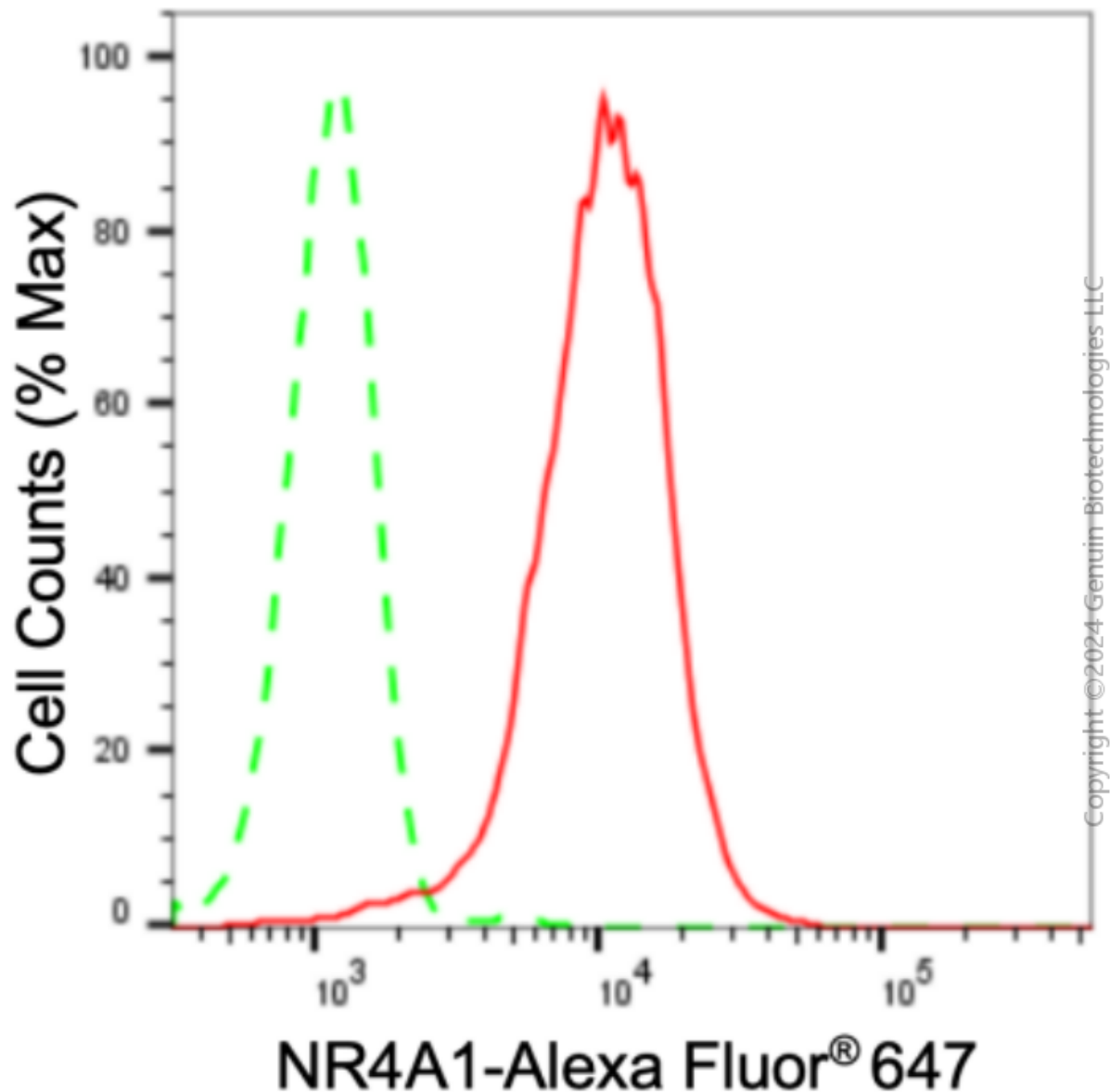
### ORDERS

SALES@GENUINBIOTECH.COM  
FAX: +1-540-855-7041

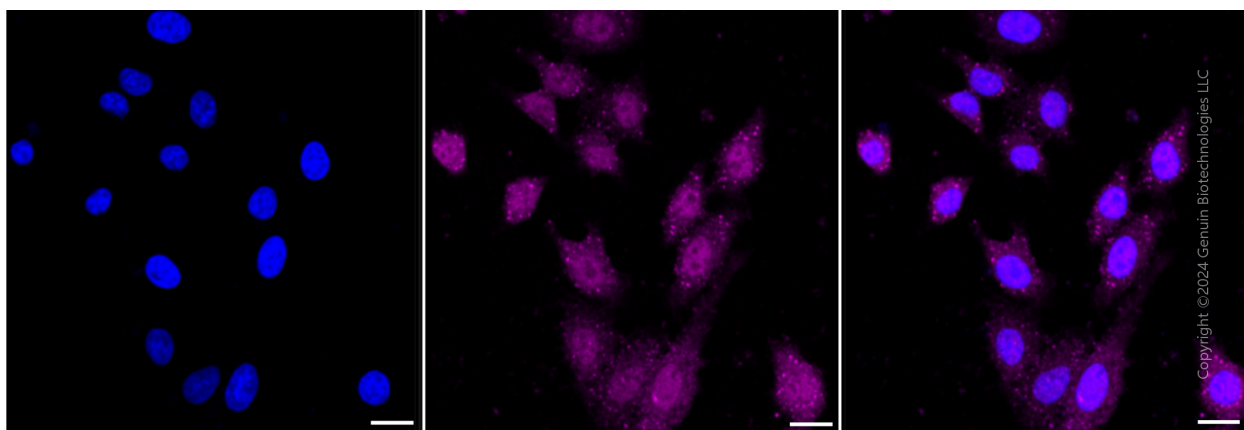
[WWW.GENUINBIOTECH.COM](http://WWW.GENUINBIOTECH.COM)

**Note:** This product is for research use only.

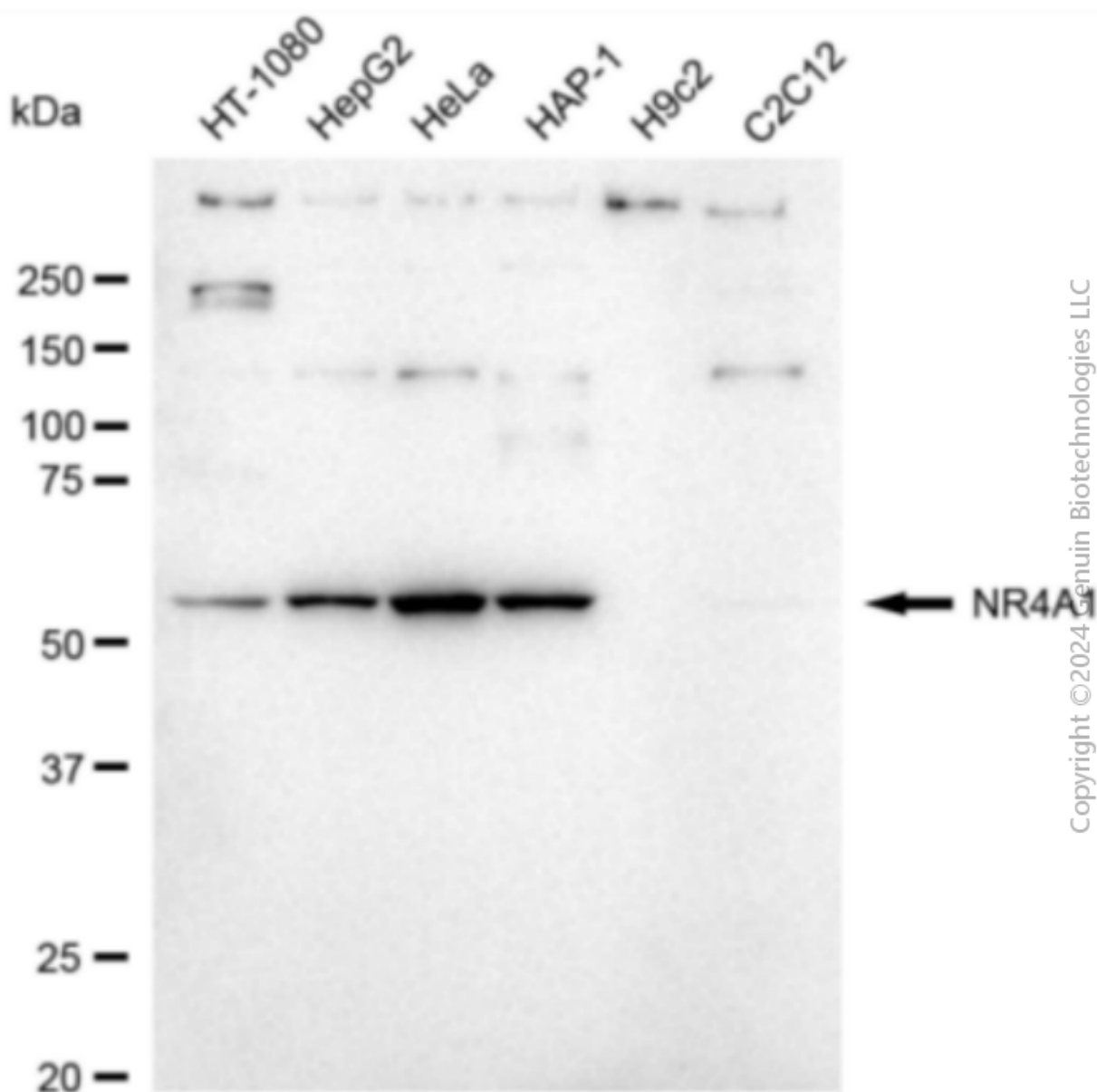
## Validation Data



Flow cytometric analysis of NR4A1 expression in HepG2 cells using anti-NR4A1 antibody (Cat#2971, 1:2,000). Green, isotype control; red, NR4A1.



Immunocytochemical staining of HepG2 cells with anti-NR4A1 antibody (Cat#2971, 1:1,000). Nuclei were stained blue with DAPI; NR4A1 was stained magenta with Alexa Fluor® 647. Images were taken using Leica stellaris 5. Protein abundance based on laser Intensity and smart gain: Medium. Scale bar: 20  $\mu$ m.



Western blotting analysis using anti-NR4A1 antibody (Cat#2971). Total cell lysates (30  $\mu$ g) from various cell lines were loaded and separated by SDS-PAGE. The blot was incubated with anti-NR4A1 antibody (Cat#2971, 1:5,000) and HRP-conjugated goat anti-rabbit secondary antibody (Cat#201, 1:20,000) respectively. Image was developed using FeQ™ ECL Substrate Kit (Cat#226).

## SUPPORT

SUPPORT@GENUINBIOTECH.COM  
TEL: +1-540-855-7041

## ORDERS

SALES@GENUINBIOTECH.COM  
FAX: +1-540-855-7041

[WWW.GENUINBIOTECH.COM](http://WWW.GENUINBIOTECH.COM)