

Anti-Glypican 3 Recombinant Rabbit Monoclonal Antibody



Catalog #: 2975

Aliases

GPC3; Glypican 3; OCI-5; SGBS1; SGBS; DGSX; SGB; Intestinal Protein OCI-5; Glypican Proteoglycan 3; Glypican-3; GTR2-2; MXR7; SDYS; Heparan Sulphate Proteoglycan; Secreted Glypican-3; OCI5

Background

Gene Name: GPC3

NCBI Gene Entry: [2719](#)

UniProt Entry: [P51654](#)

Application Information

Molecular Weight: Predicted, 66 kDa; observed, 75 kDa

Clonality: Rabbit monoclonal antibody

Clone ID: 24GB3440

Species Reactivity: Human, mouse, rat

Applications Tested: Western blotting (WB), flow cytometry (FCM), immunocytochemistry (IC)

Immunogen

A synthesized peptide derived from human Glypican 3

Isotype

Rabbit IgG

Storage Buffer

Supplied in PBS (pH 7.4) containing 50% glycerol, and 0.02% sodium azide.

Storage

Store at -20 °C for one year.

Recommended Dilutions

Western Blotting (WB): 1:1,000-1:5,000

Flow Cytometry (FCM): 1:2,000

Immunocytochemistry (IC): 1:100-1:1,000

Note: This product is for research use only.

SUPPORT

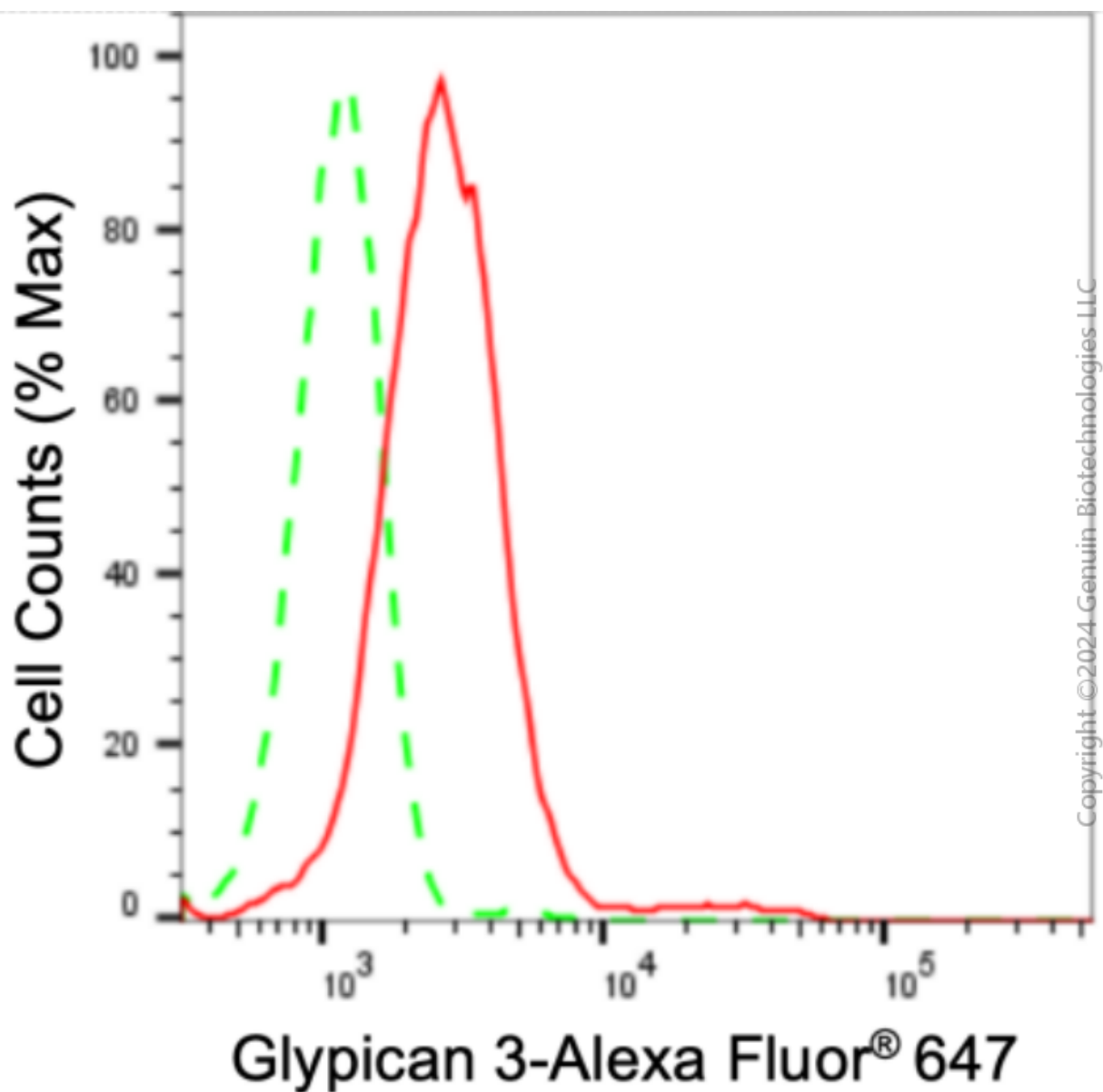
SUPPORT@GENUINBIOTECH.COM
TEL: +1-540-855-7041

ORDERS

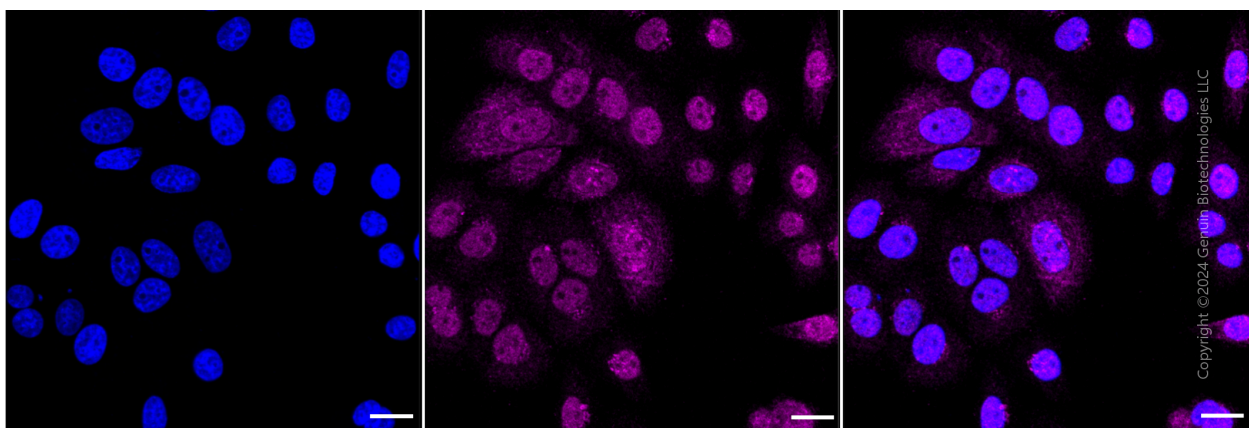
SALES@GENUINBIOTECH.COM
FAX: +1-540-855-7041

WWW.GENUINBIOTECH.COM

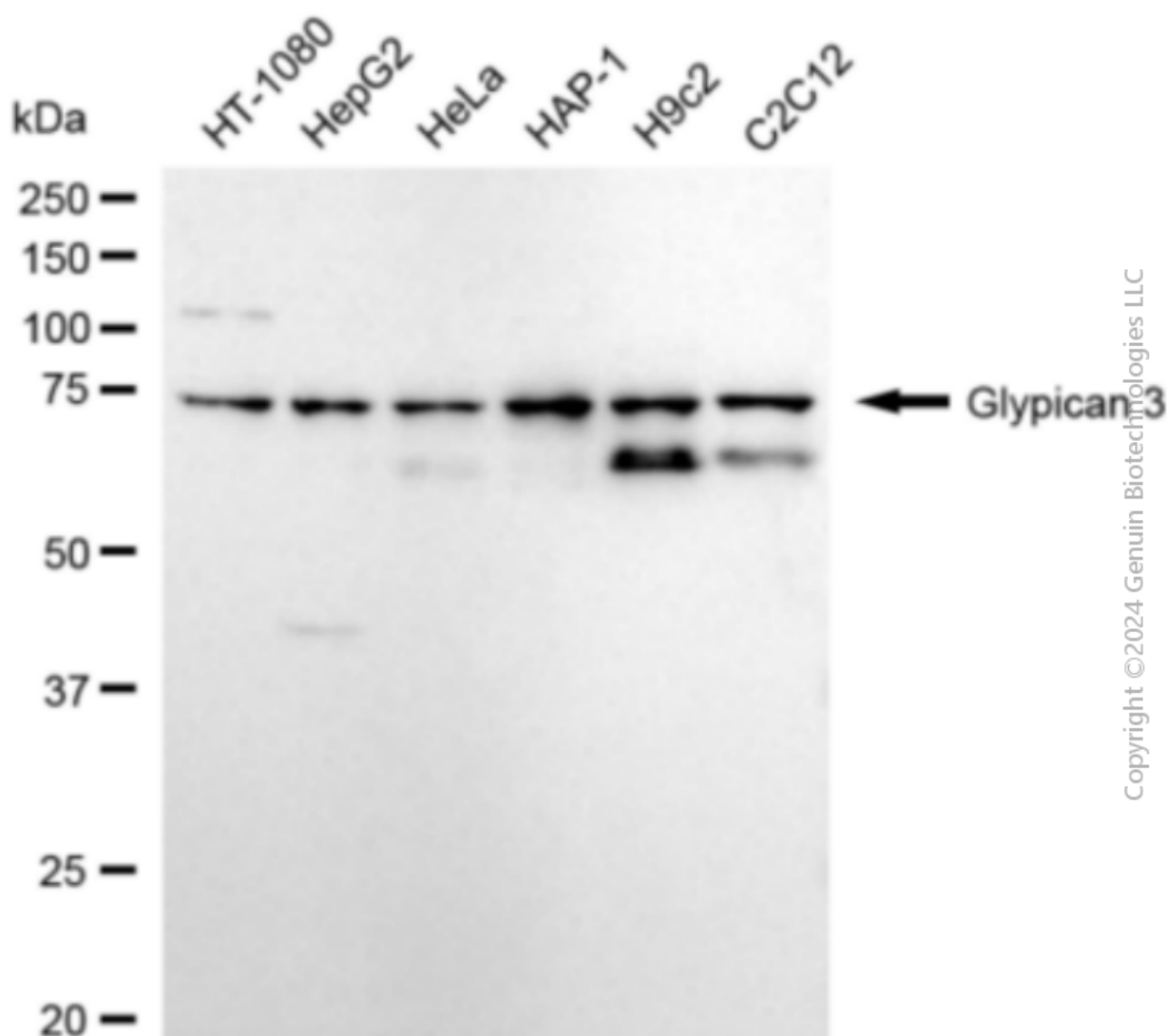
Validation Data



Flow cytometric analysis of Glypican 3 expression in HepG2 cells using anti-Glypican 3 antibody (Cat#2975, 1:2,000). Green, isotype control; red, Glypican 3.



Immunocytochemical staining of HepG2 cells with anti-Glypican 3 antibody (Cat#2975, 1:1,000) . Nuclei were stained blue with DAPI; Glypican 3 was stained magenta with Alexa Fluor® 647. Images were taken using Leica stellaris 5. Protein abundance based on laser Intensity and smart gain: Medium. Scale bar: 20 μ m.



Anti-Glypican 3 Recombinant Rabbit Monoclonal Antibody

PAGE 4

Western blotting analysis using anti-Glypican 3 antibody (Cat#2975). Total cell lysates (30 µg) from various cell lines were loaded and separated by SDS-PAGE. The blot was incubated with anti-Glypican 3 antibody (Cat#2975, 1:5,000) and HRP-conjugated goat anti-rabbit secondary antibody (Cat#201, 1:20,000) respectively. Image was developed using FeQ™ ECL Substrate Kit (Cat#226).

SUPPORT

SUPPORT@GENUINBIOTECH.COM
TEL: +1-540-855-7041

ORDERS

SALES@GENUINBIOTECH.COM
FAX: +1-540-855-7041

WWW.GENUINBIOTECH.COM