

Anti-Clock Circadian Regulator Recombinant Rabbit Monoclonal Antibody



Catalog #: 2978

Aliases

CLOCK; Clock Circadian Regulator; BHLHe8; Circadian Locomoter Output Cycles Protein Kaput; KIAA0334; KAT13D; Class E Basic Helix-Loop-Helix Protein 8; EC 2.3.1.48; Circadian Locomoter Output Cycles Kaput Protein; Clock (Mouse) Homolog; Clock Homolog (Mouse); Clock Homolog; BHLHE8; HCLOCK

Background

Gene Name: CLOCK

NCBI Gene Entry: [9575](#)

UniProt Entry: [O15516](#)

Application Information

Molecular Weight: Predicted, 95 kDa; observed, 75 kDa

Clonality: Rabbit monoclonal antibody

Clone ID: 24GB3455

Species Reactivity: Human, mouse, rat

Applications Tested: Western blotting (WB), flow cytometry (FCM), immunocytochemistry (IC)

Immunogen

A synthesized peptide derived from human CLOCK

Isotype

Rabbit IgG

Storage Buffer

Supplied in PBS (pH 7.4) containing 50% glycerol, and 0.02% sodium azide.

Storage

Store at -20 °C for one year.

Recommended Dilutions

Western Blotting (WB): 1:1,000-1:5,000

Flow Cytometry (FCM): 1:2,000

Immunocytochemistry (IC): 1:100-1:1,000

SUPPORT

SUPPORT@GENUINBIOTECH.COM
TEL: +1-540-855-7041

ORDERS

SALES@GENUINBIOTECH.COM
FAX: +1-540-855-7041

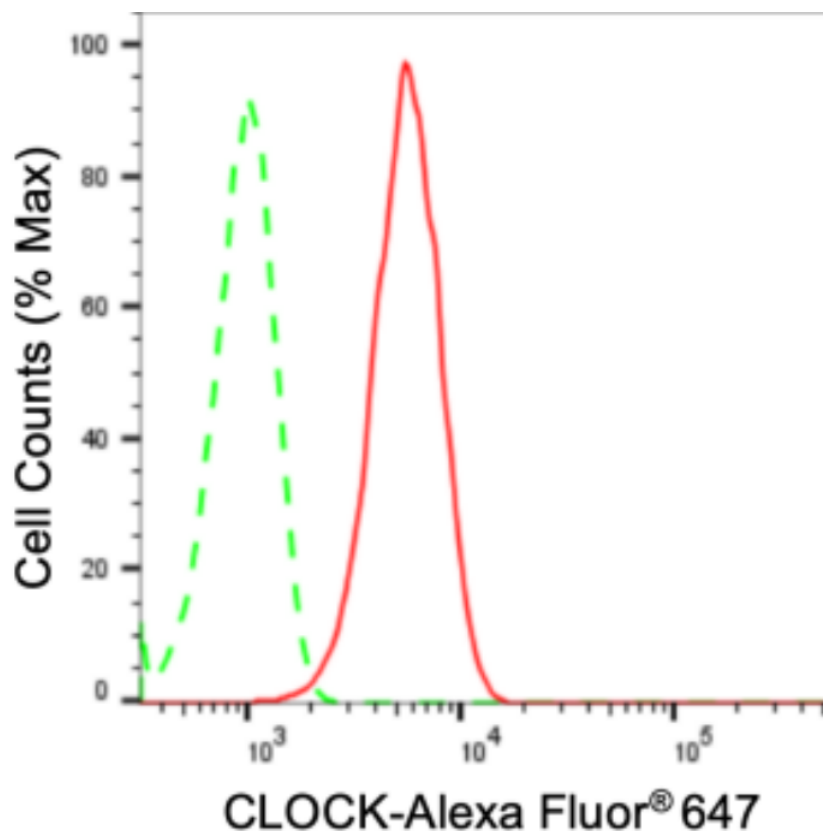
WWW.GENUINBIOTECH.COM

Anti-Clock Circadian Regulator Recombinant Rabbit Monoclonal Antibody

PAGE 2

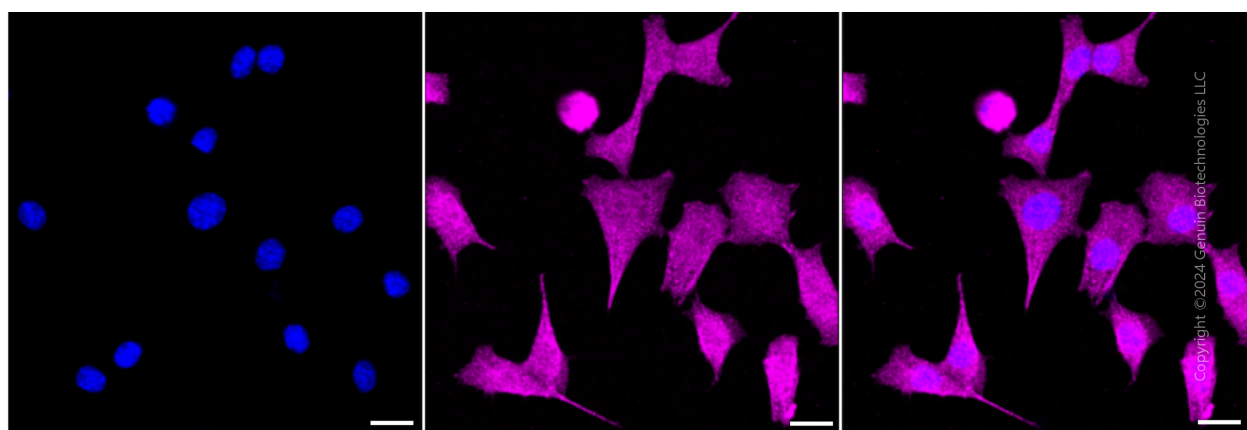
Note: This product is for research use only.

Validation Data



Copyright ©2024 Genuin Biotechnologies LLC

Flow cytometric analysis of CLOCK expression in C2C12 cells using anti-CLOCK antibody (Cat#2978, 1:2,000). Green, isotype control; red, CLOCK.



Copyright ©2024 Genuin Biotechnologies LLC

Immunocytochemical staining of C2C12 cells with anti-CLOCK antibody (Cat#2978, 1:1,000). Nuclei were stained blue with DAPI; CLOCK was stained magenta with Alexa Fluor® 647. Images were taken using leica stellaris 5. Protein abundance based on laser intensity and smart gain: Medium. Scale bar: 20 μ m.

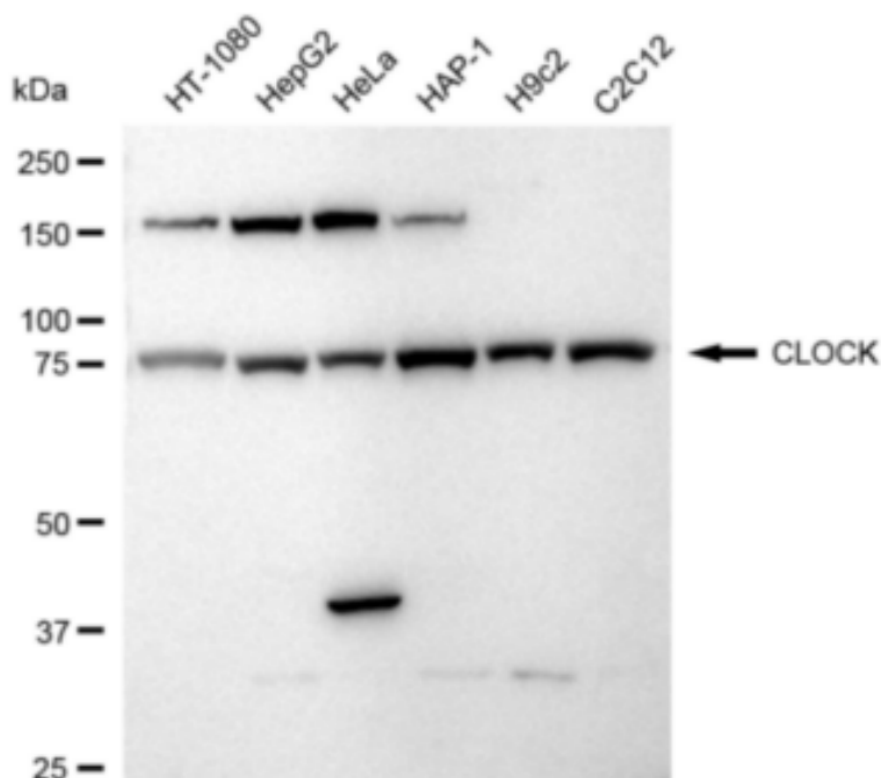
SUPPORT

SUPPORT@GENUINBIOTECH.COM
TEL: +1-540-855-7041

ORDERS

SALES@GENUINBIOTECH.COM
FAX: +1-540-855-7041

WWW.GENUINBIOTECH.COM



Copyright ©2024 Genuin Biotechnologies LLC

Western blotting analysis using anti-CLOCK antibody (Cat#2978). Total cell lysates (30 μ g) from various cell lines were loaded and separated by SDS-PAGE. The blot was incubated with anti-CLOCK antibody (Cat#2978, 1:5,000) and HRP-conjugated goat anti-rabbit secondary antibody (Cat#201, 1:20,000) respectively. Image was developed using FeQ™ ECL Substrate Kit (Cat#226).